

SEALED SWITCH MODULE

SELF-CONTAINED, LONG-LIFE, SEALED SWITCH MODULE WITH UP TO 5 POSITIONS

The TC is a self contained, sealed switch module with up to 5 positions. It can be utilized in numerous applications that require a compact switch module and long life.

At slightly over an inch in diameter, it can be used in a grip, front panel, or hand held device, just to name a few applications. It is available in either a top mount or rear mount.

The advantage of the TC switch module is that it incorporates keypad functionality within a very small footprint. Standard or custom legends are available and can be LED backlit.

Standard termination options include flying leads, ribbon cable (with or without AMP connector) and FFC (flexible flat cable). Tested to three million cycles, the TC switch module has an operating temperature range of -40°C to 85°C and it is sealed to IP68S.

The TC can be used in panel or grip applications and is especially useful in cursor control or data entry applications. Applications include construction, agriculture, industrial, material handling and medical.

Features:

- Watertight to IP68S
- Great for grips and panels
- 3 million cycle electrical life
- LED backlight option



TC Standard Characteristics/Ratings:

ELECTRICAL RATINGS: 1-28 VDC @ Sea Level

Load: 10-100mA Resistive

Electrical Life: 3,000,000 cycles

LED Voltage Rating: 2.0 VDC

Mechanical Life: 3,000,000 cycles

Seal: IP68S

Operating Temp Range: -40°C to +85°C

Operating Force: 1.0 +/- .5 lbs.

Pushout Force: 5 lbs. min.

MATERIALS:

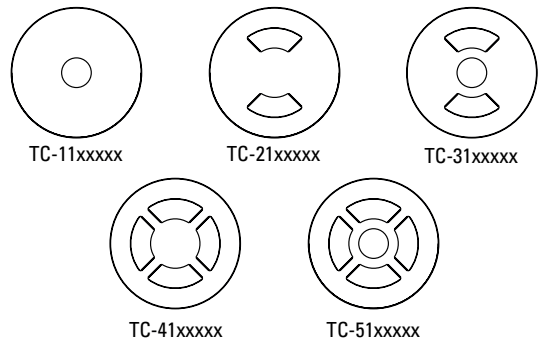
Housing: PBT

Keypad: Silicone Rubber

Terminal Hardware: None provided

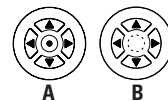
Mounting Hardware: VHB tape

TC Switch Module Keypad Configurations



TC PART NUMBER CODE

TC	X	X	X	X	X	X	X
Position	Mounting	Termination	Backlight	Color	Legend*	Not Used	
1. 1 Position	1. Top Mount	2. Flying Leads, UL 1569, 24 AWG	N. None	2. Black	None		
2. 2 Position	2. Rear Mount (Behind Panel)	3. FFC, UL 20624	9. White		A. Arrows (5 position)		
3. 3 Position		4. Ribbon Cable, UL 2651, & AMP 215083 Connector			B. Arrows (4 position)		
4. 4 Position		5. Ribbon Cable, UL 2651, Blunt Cut					
5. 5 Position							



* Color = White

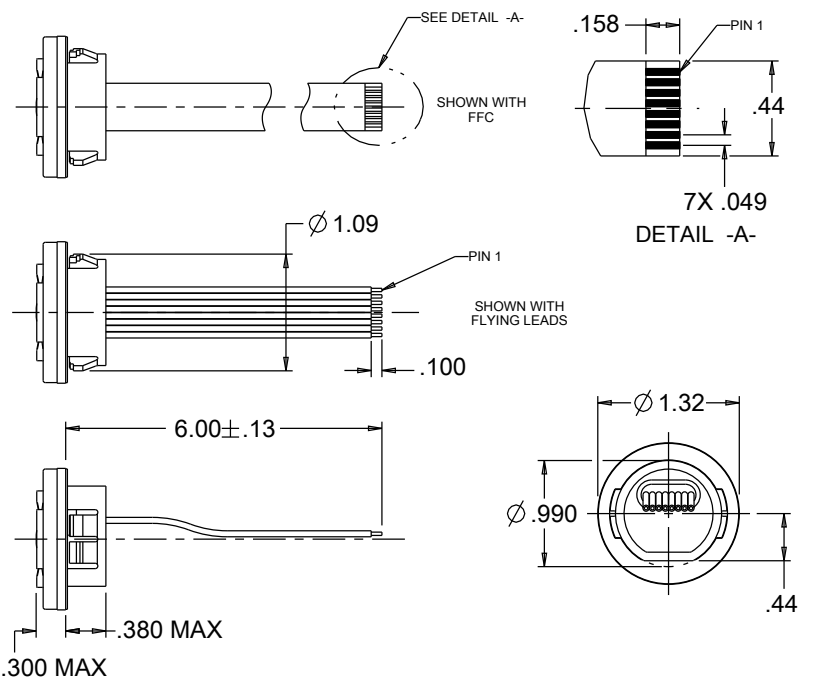
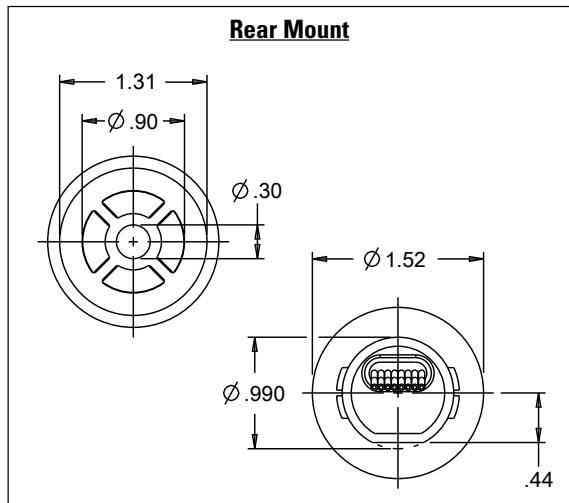
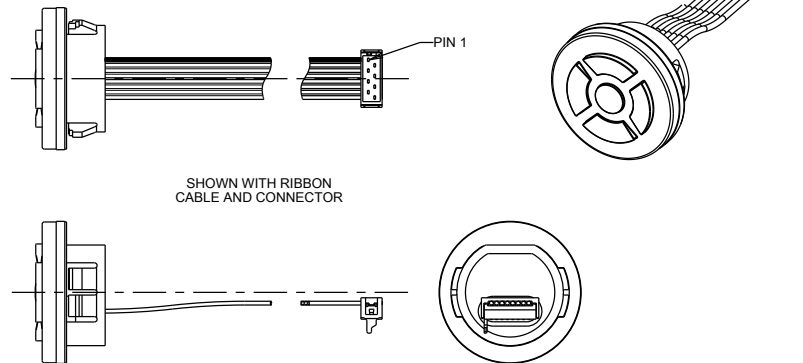
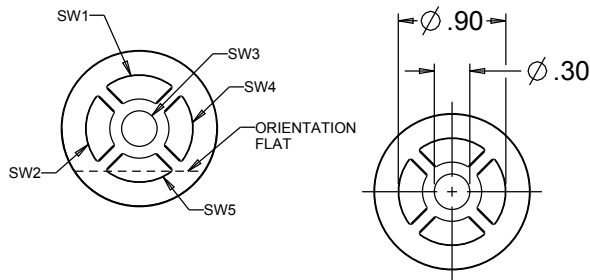
SEALED SWITCH MODULE

TC
SWITCH
MODULE

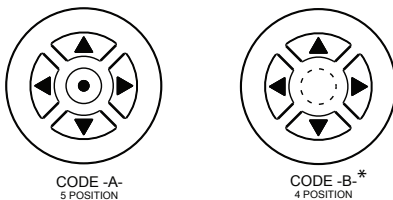
SELF-CONTAINED, LONG-LIFE, SEALED SWITCH MODULE WITH UP TO 5 POSITIONS

TC-51xxxxx

Top Mount, 5 Position Module

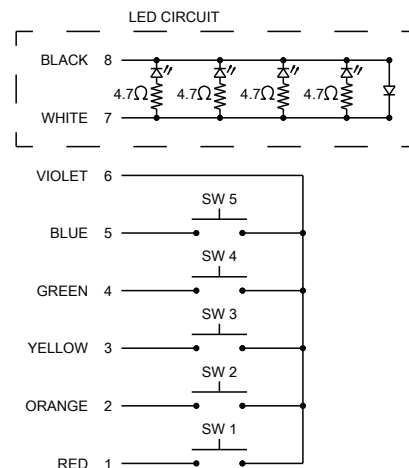


Standard Legend Configurations



*Available with TC-4
and TC-5 versions

Schematic with optional LED circuit shown



Mouser Electronics

Authorized Distributor

Click to View Pricing, Inventory, Delivery & Lifecycle Information:

OTTO:

[TC-112N2](#) [TC-412N2](#) [TC-512N2A](#) [TC-513N2](#) [TC-52292A](#) [TC-522N2](#) [TC-524N2A](#) [TC-514N2](#)