

4-WAY MOMENTARY TOGGLE WITH TACTILE RESPONSE

Tactile switches remain a favorite among design engineers because the positive detent indicates circuit transfer to the operator. The T4-T toggle switch provides a 4-way momentary toggle action with detent providing a positive click action.

T4-T seal options include IP64, IP68S and water resistant per MIL-STD-810F; method 506.4, procedure 3 (drip).

The T4-T series provides Commercial and Military grade switching with a positive click action, ideal for grip applications in aircraft and off-road equipment.

Features:

- **Positive detent**
- **4-way momentary toggle action**
- **Positive click action**
- **Enclosure sealed to IP64, IP68S or water resistant per MIL-STD-810F; method 506.4, procedure 3 (drip)**
- **Logic level options**
- **Available in Commercial & Military grades**
- **Variety of button styles & colors available**
- **RoHS compliant**

Short Hat Button Style

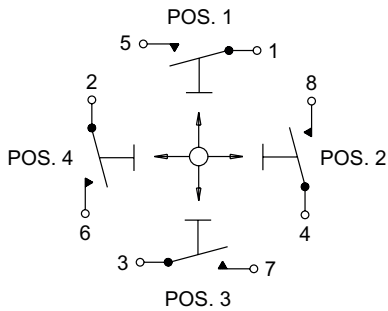


Castle Button Style

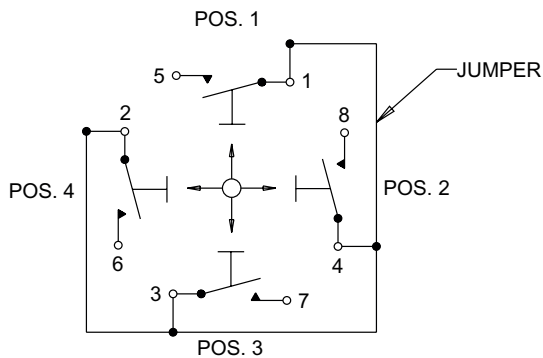


Inverse Hat Button Style

(Unsealed Versions Shown)



SPST-NO
4 WAY
SCHEMATIC



SPST-NO
4 WAY WITH COMMON JUMPER
SCHEMATIC

Standard Characteristics/Ratings:

ELECTRICAL RATINGS:

Load	Sea Level @ 28VDC
Resistive	2A
Inductive	1A
DWV	1000Vrms
Logic Level	10mA @ 5VDC

Electrical Life: 100,000 cycles min. (Military)
150,000 cycles min. (Commercial)

Mechanical Life: 500,000 cycles

Seal: IP64, IP68S or water resistant per MIL-STD-810F, method 506.4, procedure 3 (drip)

Operating Temp Range: -55°C to +85°C

Operating Force: 0.75 lb. +/- 0.25 lb.

Button Strength: 4.5 lb. minimum pull

Overtravel: 1.5° min

Pretravel: 9.5° max

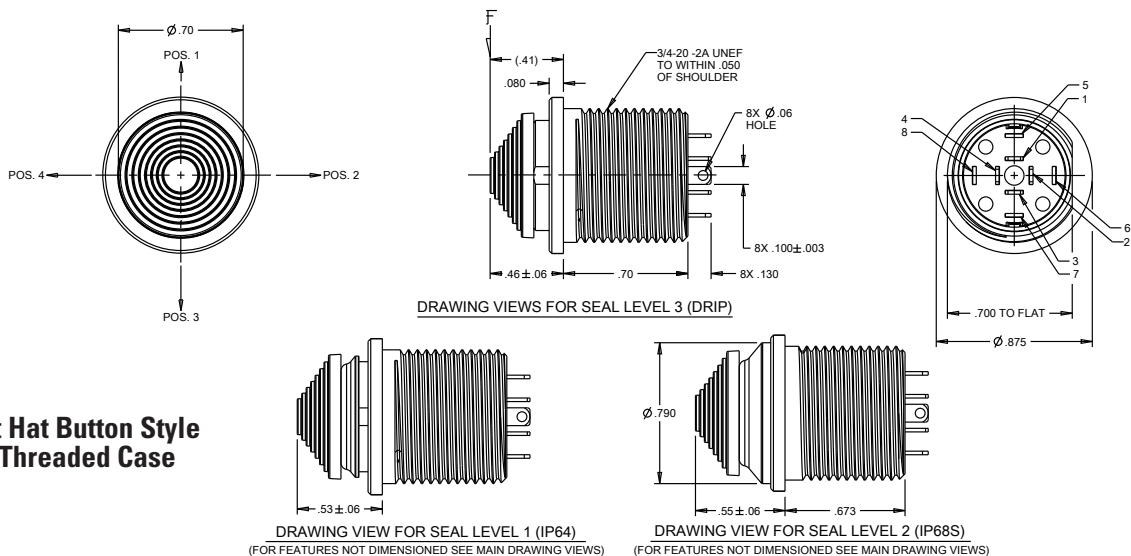
Return Point: 4° min

MATERIALS:

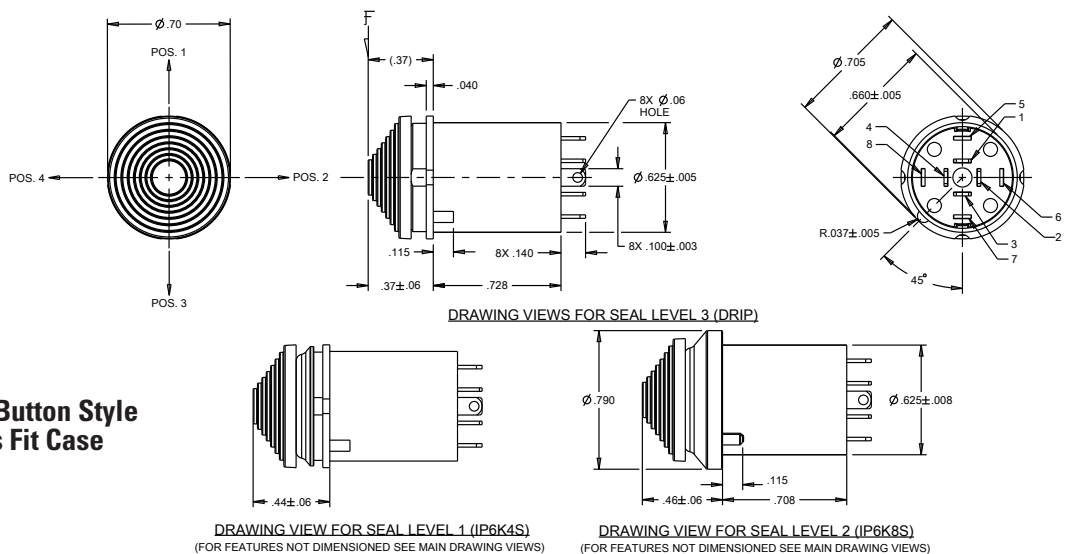
Case:	Black Thermoplastic
Button:	Thermoplastic
Terminals:	Copper or brass Gold over silver for logic level
Bushing:	Black anodized aluminum alloy
Mounting Hardware:	Hexnut, lockwasher and panel seal gasket where applicable

4-WAY MOMENTARY TOGGLE WITH TACTILE RESPONSE

Short Hat Button Style with Threaded Case



Short Hat Button Style with Press Fit Case



T4-T PART NUMBER CODE

Series	Grade	Button Style*	Case Style	Seal	Current Rating	Button Color**
T4-T 4-Way	C. Commercial M. Military	A. 2-Way Jog B. Tall Jog C. Rocker D. Cone E. LRUD Hat F. IOUD Hat G. Hat H. Stadium J. Castle K. 4-Way Jog L. Inverse Hat M. Tall Hat N. Short Hat P. Rotated Stadium	3. Press Fit 4. Threaded	1. IP64 Dusttight 2. IP68S Watertight 3. Water resistant per MIL-STD-810F, method 506.4, procedure 3 (drip)	1. Standard 2. Logic Level 3. Standard With Internal Jumper 4. Logic Level With Internal Jumper	1. Red 2. Black 8. Gray

**Contact factory for additional colors.

*T4-T Mini Trim Button Styles are shown on the Button Styles page and in the appendix.

Mouser Electronics

Authorized Distributor

Click to View Pricing, Inventory, Delivery & Lifecycle Information:

OTTO:

[T4-TCH4332](#) [T4-TCJ3222](#) [T4-TCM3212](#) [T4-TCP4312](#) [T4-TMM3148](#) [T4-TMM3248](#) [T4-TMH4312](#) [T4-TMJ4312](#)
[T4-TMM4312](#) [T4-TCL3338](#) [T4-TCP4112](#) [T4-TCP4242](#) [T4-TMC4312](#) [T4-TMD4312](#) [T4-TME4312](#) [T4-TCC4112](#) [T4-](#)
[TCD3112](#) [T4-TCD4112](#) [T4-TCH4112](#) [T4-TCJ4112](#) [T4-TCK4112](#) [T4-TCJ4212](#) [T4-TCM3142](#)