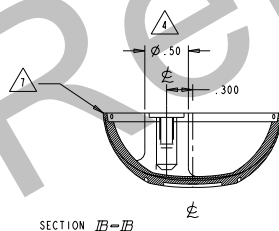
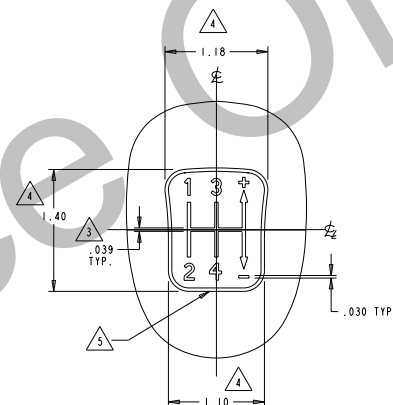
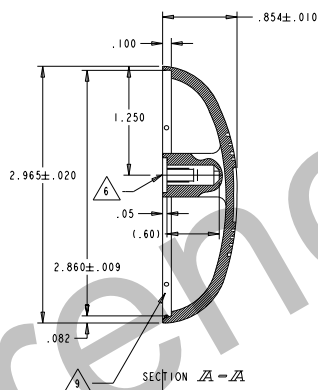
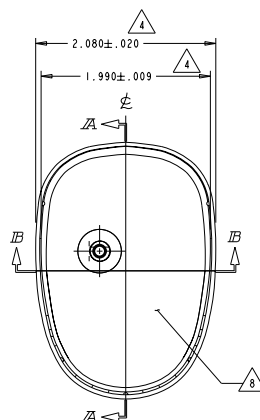


NOTES:

401711	LET	OCN	DATE	APR
A	985134	21 DEC 98	RG	

- STANDARD WALL THICKNESS .125±.015 UNLESS OTHERWISE SPECIFIED
- GENERAL SURFACE TEXTURE: RAWAL MT-11010 (25.4 MICRONS)
SHIFT PATTERN AREA: SPI #5 (.81 TO .89 MICRONS)
- ALL FEATURE AND BLEND RADII UNSPECIFIED ON DRAWING
ARE PROVIDED BY 3D DATA BASE P/N TBD
- DIMENSIONS TO BE CENTERED ON ϕ WITHIN .010 TIR
- GEAR SHIFT PATTERN RECESSED .039 INTO PART
- M4 X 0.7 THREADED BUSHING INSERT (700294) MOLDED IN PART
- DEBURR AROUND ENTIRE OUTSIDE EDGE
- OTTO PART NUMBER LOCATED ON THIS SURFACE
- 5 PRESS BOSSES LOCATED ON THIS SURFACE AS SHOWN



ITEM	PART NO.	QTY.	DESCRIPTION
6	OTTO CONTROLS		U2, GEAR KNOB TOP
1	DIVISION OF OTTO ENGINEERING INC. CARPENTERSVILLE, ILLINOIS USA		W/MODIFIED SHIFT PATTERN
UNLESS OTHERWISE SPECIFIED: DIMENSIONS ARE IN INCHES. TOLERANCES ARE AS LISTED. MUST BE FREE FROM BURRS AND SHARP EDGES.		TOLERANCES .XX ±.01 .XXX ±.005 ANGLES .01° SURFACES 64 MICROINCH DO NOT SCALE DRAWING.	THE INFORMATION CONTAINED HEREIN IS THE PROPERTY OF OTTO ENGINEERING INC. AND CONSTITUTES PROPRIETARY INFORMATION. RIGHT TO MANUFACTURE GRANTED BY WRITTEN AUTHORIZATION ONLY.
		DRWN. BDS CHKD. RG APPD. ASC DATE 21 DEC 98	FSCM NO DRAWING NO. C 21649 401711 SCALE 1:1 SHEET 1 OF 1

Mouser Electronics

Authorized Distributor

Click to View Pricing, Inventory, Delivery & Lifecycle Information:

OTTO:

OMLD-401711