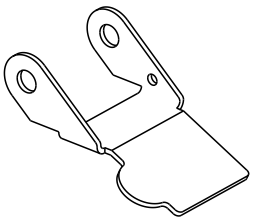


NOTES:

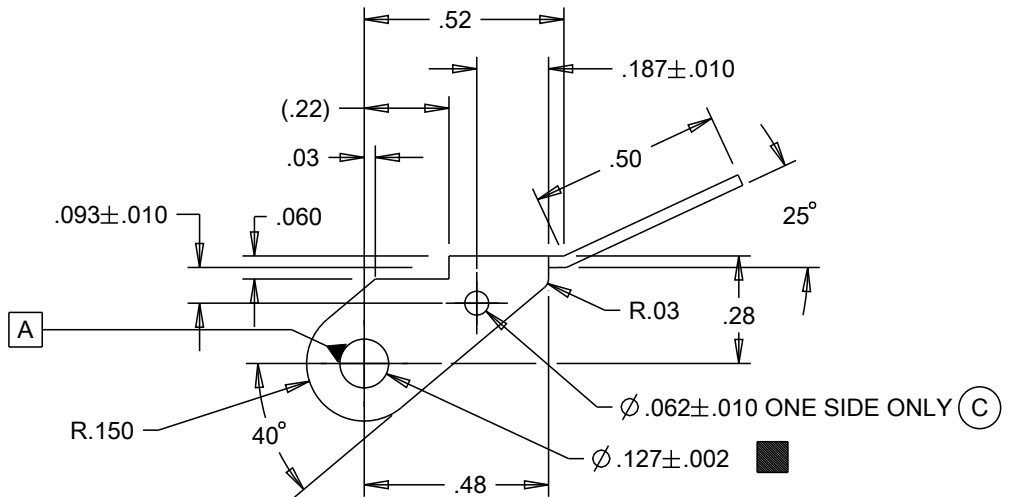
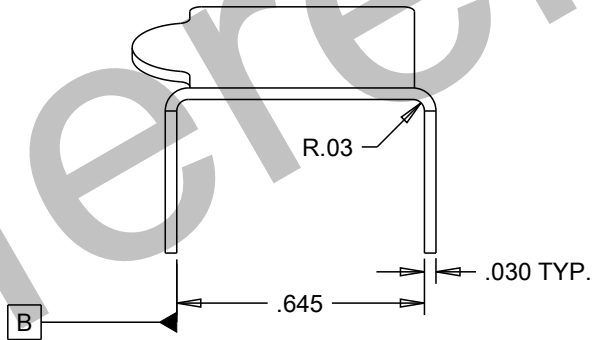
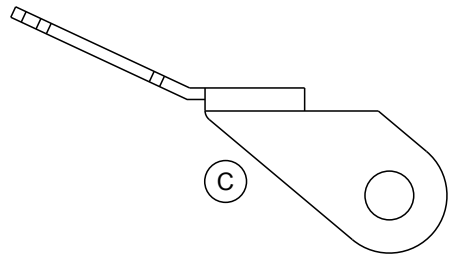
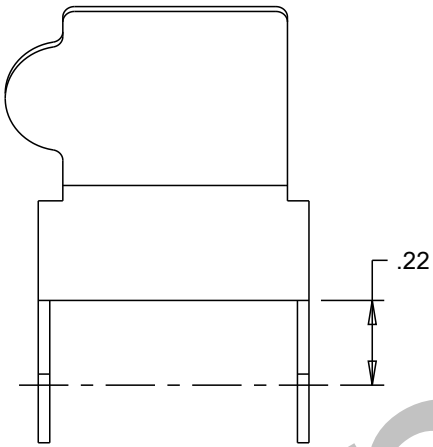
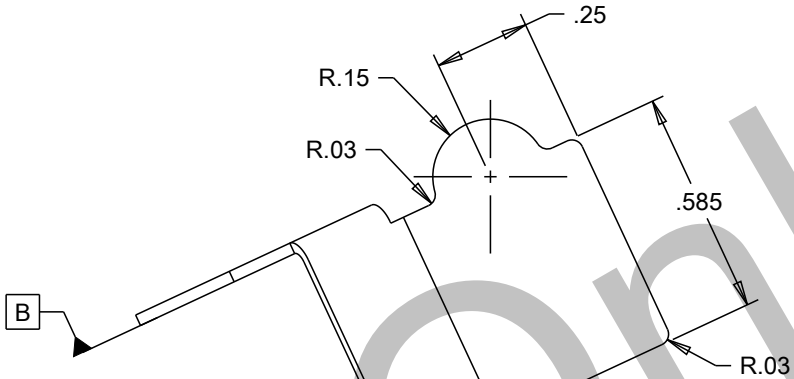
1. CHANGE OF MATERIAL OR PROCESS IS NOT PERMITTED UNLESS APPROVED IN WRITING BY OTTO ENGINEERING PERSONNEL.
2. DRAWING TO BE INTERPRETED IN ACCORDANCE WITH THE CURRENT REVISION OF ASME Y14.5.
3. TSI TO BE INTERPRETED AS THEORETICAL SHARP INTERSECTION.
4. THIS PART IS TO BE MANUFACTURED IN ACCORDANCE WITH THE LATEST APPLICABLE REGULATIONS OF EC DIRECTIVES FOR THE RESTRICTION OF THE USE OF HAZARDOUS SUBSTANCES IN ELECTRICAL AND ELECTRONIC EQUIPMENT (RoHS), WASTE ELECTRICAL AND ELECTRONIC EQUIPMENT (WEEE) AND REGISTRATION, EVALUATION, AUTHORISATION AND RESTRICTION OF CHEMICALS (REACH).
5. SILICA SAND BLAST TOP SURFACE TO PROVIDE A MATTE FINISH PRIOR TO NICKEL PLATING.
6. DULL NICKEL PLATE PER QQ-N-290, .0003 THICK OVER COPPER FLASH.
7. DIMENSIONS ARE AFTER PLATING.

201423

REV	ECN #	DATE	APR
A	031945	09 MAY 06	KI
B	B14997	30 JAN 20	KI
C	B24521	29 JAN 21	KI



SCALE 1:1



KEY CHARACTERISTICS SPECIAL REQUIREMENTS

PROCESS:
SEE TABLE

MATERIAL:
STAINLESS STEEL TYPE
301 OR 302 PER QQ-S-766
3/4 HARD

OTTO
CARPENTERSVILLE, ILLINOIS USA

DESCRIPTION

G2, FLIP GUARD, TRIGGER
LEFT HAND OPERATION

UNLESS OTHERWISE SPECIFIED:
DIMENSIONS ARE IN INCHES.
TOLERANCES ARE AS LISTED.
MUST BE FREE FROM BURRS
AND SHARP EDGES.

TOLERANCES
.XX ± .01
.XXX ± .005
ANGLES ± 1°
SURFACES 64 MICROINCH
DO NOT SCALE DRAWING.

THIS DOCUMENT IS THE CONFIDENTIAL
PROPERTY OF OTTO ENGINEERING, INC..
IT IS NOT TO BE USED IN ANY WAY
DETRIMENTAL TO THE INTERESTS
OF OTTO ENGINEERING, INC..

DRWN. RW
CHKD. KI
APPD. AH
WT.

SIZE
B

FSCM NO
21649

DRAWING NO.
201423

REV.
C

THIRD ANGLE
PROJECTION



Scale 2:1

Sheet 1 OF 1

PART#	PROCESS 1	PROCESS 2	PROCESS 3
201423	STAMP	SAND BLASTED 5	DULL NICKEL 6

Mouser Electronics

Authorized Distributor

Click to View Pricing, Inventory, Delivery & Lifecycle Information:

OTTO:

OPLT-201423