

SUBMINIATURE WATERTIGHT SEALED

P6-3
LIMIT
SWITCHES

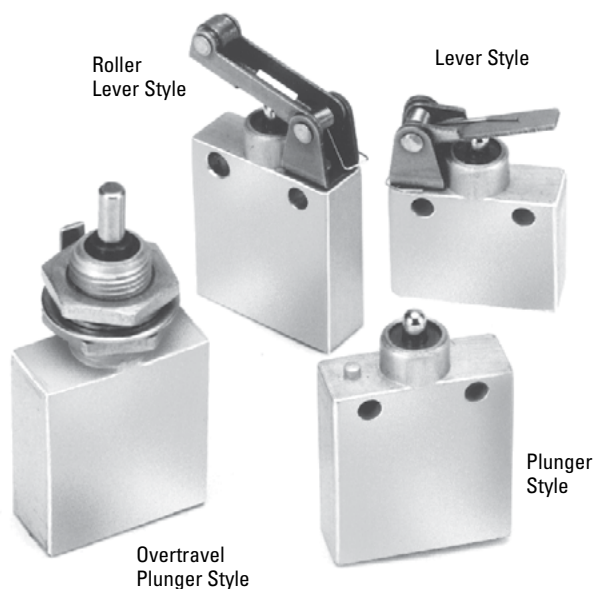
FEATURING OTTO B5 SERIES BASIC SWITCHES

These subminiature sealed switches are contained in a rugged aluminum housing with choice of lever, roller or plunger. Featuring the B5 series basic switch, the P6-3 series is able to switch up to 10 amps. The high contact pressure and superior wiping action of the OTTO design also makes the P6-3 series an excellent choice when switching logic level loads.

Sealing against water and other liquids is per MIL-PRF-8805. Wire leaded models feature potted leads. The solder terminals are epoxy sealed.

Features:

- **Compact design**
- **Watertight to MIL-PRF-8805**
- **Choice of four actuator styles**
- **Choice of wire lead or solder termination styles**
- **Up to 10 amps switching capability**
- **High contact pressure for low levels**
- **Precision operating points**
- **Reach compliant**



LIMIT SWITCHES

Standard Characteristics/Ratings:

ELECTRICAL RATINGS:		Sea Level @ 28VDC			50,000 feet @ 28VDC			
Load	Single Circuit N.O. or N.C.		2 Circuit Per Pole		Single Circuit N.O. or N.C.		2 Circuit Per Pole	
Resistive	10A		10A		10A		10A	
Inductive	7.5A		5A		3.5A		2A	
Motor	4A		2A		N/A		N/A	
DWV	1000Vrms				500Vrms			
Electrical Life:	50,000 cycles							
Mechanical Life:	50,000 cycles							
OPERATIONAL:	P6-31	P6-32	P6-33	P6-34	P6-35	P6-36	P6-37	P6-38
Operating Force:	16 oz max	40 oz max	20 oz max	40 oz max	32 oz max	60 oz max	20 oz max	48 oz max
Release Force:	4 oz min	8 oz min	4 oz min	8 oz min	4 oz min	24 oz min	4 oz min	8 oz min
Movement Differential:	0.060" max	0.020" max	0.060" max	0.020" max	0.080" max	0.035" max	0.080" max	0.040" max
Pretravel:	0.125" max	0.050" max	0.125" max	0.070" max	0.125" max	0.050" max	0.125" max	0.070" max
Overtravel:	0.025" min	0.012" min	0.025" min	0.187" min	0.025" min	0.012" min	0.025" min	0.187" min
Strength of Actuator:	10.0 lbs.	25.0 lbs.	10.0 lbs.	25.0 lbs.	10.0 lbs.	25.0 lbs.	10.0 lbs.	25.0 lbs.
Temperature Range:	-55°C to +85°C							
Seal:	Enclosure Design 3, watertight per MIL-PRF-8805							
MATERIALS:								
Plunger:	Corrosion resistant steel							
Lever:	Corrosion resistant steel (where applicable)							
Mounting Hardware:	None provided							

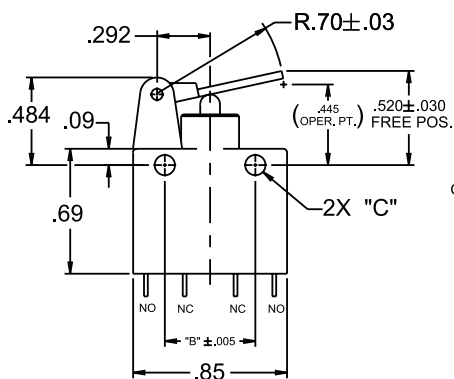
FEATURING OTTO B5 SERIES BASIC SWITCHES

P6-3 PART NUMBER CODE

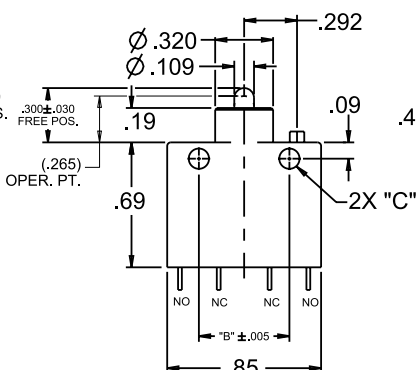
Single Pole

Actuator Style	Terminal Style	Circuitry	Mounting Holes (See drawing below.)	Serial Digit
1. Lever 2. Plunger 3. Roller Lever 4. Overtravel Plunger	1. Solder Terminals 3. 1' Potted Leads 4. 3' Potted Leads 5. 6' Potted Leads	1. SPNO-DB, Form X 2. SPNC-DB, Form Y 3. SPDT-SB, Form C 4. SPDT-DB, Form Z	1. No Holes 2. 1/2" Centers for #4-40 Screws 4. 3/8" Centers for #2-56 Screws	0. 0 Except for Specials

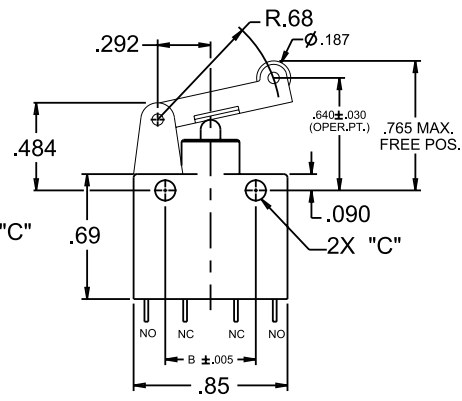
STYLE P6-31



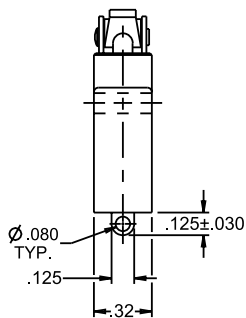
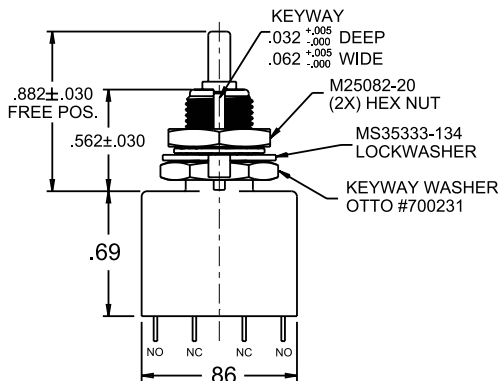
STYLE P6-32



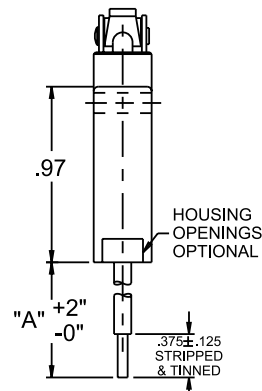
STYLE P6-33



STYLE P6-34



**SOLDER TERMINAL
(TERM. STYLE 1
EXAMPLE)**



**POTTED WIRE LEADS
(TERM. STYLES 3, 4 & 5
EXAMPLE)**

CIRCUIT SCHEMATIC	
<p>SPNO - DB (FORM X)</p>	<p>SPNC - DB (FORM Y)</p>
<p>SPDT - SB (FORM C)</p>	<p>SPDT - DB (FORM Z)</p>

POTTED WIRE LEADS		MOUNTING HOLES: CODE 2 FOR 4-40 SCREWS CODE 4 FOR 2-56 SCREWS	DIM "B" CNTRS.	DIM "C" DIA.
STYLE	DIM "A"			
3	12"		.500	Ø.112 ± .003
4	36"			
5	72"		.375	Ø.089 ± .003

Mouser Electronics

Authorized Distributor

Click to View Pricing, Inventory, Delivery & Lifecycle Information:

OTTO:

[P6-311320](#) [P6-343310](#) [P6-321340](#) [P6-323140](#) [P6-344310](#) [P6-333220](#)