

SNAP-IN PANEL MOUNTING, ATTRACTIVE & RUGGED FOR WET & DUSTY ENVIRONMENTS

Sealed to IP68S, the K3P series of panel plugs with LED indicator lights provides reliable visual feedback to control operators. The K3P panel plugs and OTTO's K3 rocker switches share the same panel cutout size and snap-in front panel mounting method. This allows you to create a uniform panel appearance in your applications. Choose up to 70 different standard legends, 6 lens colors, 5 legend colors and 4 LED colors with 4 voltage options.



## Standard Characteristics/Ratings:

**Seal:** IP68S

**Operating Temp Range:** -40°C to +85°C

## MATERIALS:

**Case and Base:** Black Thermoplastic

**Button:** Black Thermoplastic

**Terminals:** Brass Alloy

## K3P PART NUMBER CODE

K3P	—	X	X	X	X	X
		<b>Light Source Position "A"</b>	<b>Light Source Position "C"</b>	<b>Lens Color Position "A"</b>	<b>Lens Color Position "C"</b>	<b>LED DC Voltage*</b>
		1. Red	1. Red	1. Transparent Red	1. Transparent Red	1. 2V
		2. Green	2. Green	2. Transparent Green	2. Transparent Green	2. 6V
		3. Amber	3. Amber	3. Transparent Amber	3. Transparent Amber	3. 12V
		4. Blue	4. Blue	4. Clear	4. Clear	4. 24V
		Z. No Illumination	Z. No Illumination	5. Translucent White	5. Translucent White	
				6. Transparent Blue	6. Transparent Blue	
				Z. No Lens	Z. No Lens	

**STOP HERE** for lighted indicator without legends.

For legends, continue with part number code below.

\*See appendix for complete voltage/current ratings table.

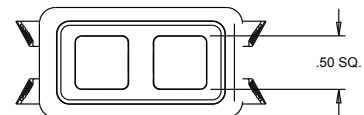
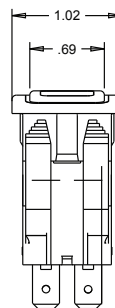
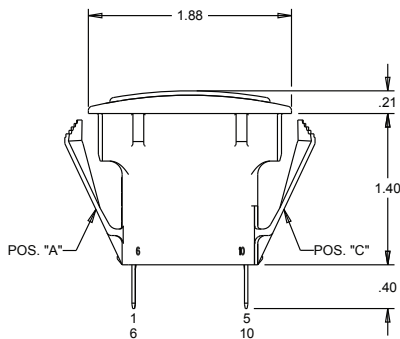
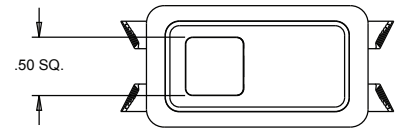
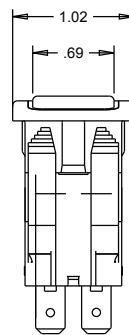
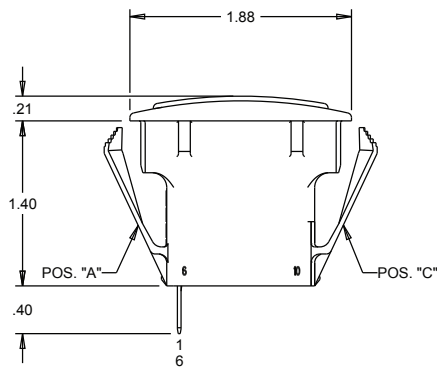
## K3P PART NUMBER CODE - CONTINUED FOR LIGHTED INDICATORS WITH LEGENDS

—	XX	XX	X	X	X
		<b>Legend Style</b>			<b>Legend Orientation</b>
		<b>Position "A"</b>	<b>Position "C"</b>	<b>Position "A"</b>	<b>Position "C"</b>
		ZZ. No Legend	ZZ. No Legend		
		NOTE: For all other legend options, refer to the legend table in the appendix, find the two digit code and enter the code in the appropriate position(s).			
			<b>Legend Color</b>		
			<b>Position "A"</b>	<b>Position "C"</b>	
			1. Red	1. Red	1. Std.
			2. Black	2. Black	2. 90°
			9. White	9. White	3. 180°
			B. Backlight/ Daylight White ①	B. Backlight/ Daylight White ①	4. 270°
			D. Backlight/ Deadfront ①	D. Backlight/ Deadfront ①	
			Z. No Legend	Z. No Legend	
			① Legend colors "B" and "D" use lens color "Z" for each position.		

# PANEL PLUG WITH INDICATOR LIGHTS

**K3P**  
PANEL PLUG  
INDICATORS

SNAP-IN PANEL MOUNTING, ATTRACTIVE & RUGGED FOR WET & DUSTY ENVIRONMENTS

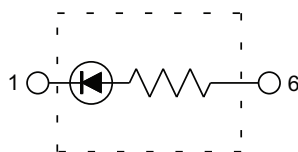
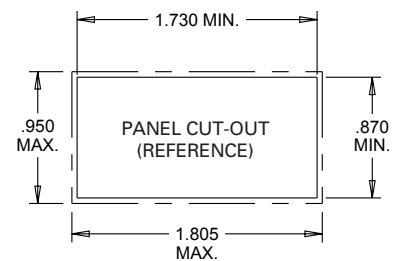


## MOUNTING OPENING:

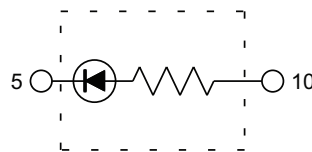
PANEL THICKNESS RANGE OF .025 - .105 PANEL SEAL GASKET P/N C807037-25 IS RECOMMENDED

PANEL THICKNESS RANGE OF .105 - .187 W/O GASKET

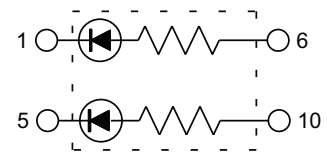
PANEL OPENING:	MIN.	TYP.	MAX.
WIDTH	.870	.937	.950
LENGTH	1.730	1.768	1.805



IND. LIGHT IN "A"  
SCHEMATIC



IND. LIGHT IN "C"  
SCHEMATIC



DUAL IND. LIGHT  
SCHEMATIC

# Mouser Electronics

Authorized Distributor

Click to View Pricing, Inventory, Delivery & Lifecycle Information:

OTTO:

[K3P-3Z3Z3ZZM2Z91](#) [K3P-3Z3Z3-ZZM2Z91](#)