

SEALED BASIC SWITCH WITH LEVERS

B3S-5
SEALED BASIC
SWITCHES

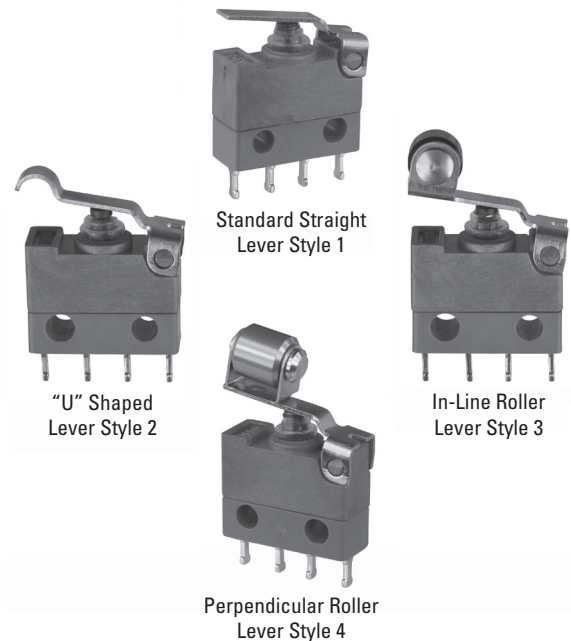
SEALED, DOUBLE BREAK, SNAP-ACTION, SUBMINIATURE, INTEGRAL LEVERS

The B3S-5 sealed, subminiature basic switch is made with an integral actuating lever, combining the switch and actuator into one assembly. Sealed to IP68S, the snap-action switch is tested to 1 million cycles at logic level, offering reliable operation in demanding applications and precision in terms of accuracy and repeatability.

The B3S-5 subminiature switch is designed for use in places where space is limited, including internally within toggle, pushbutton and limit switches. It works well in the aerospace, industrial and material handling markets for applications such as conveyor belts, forklifts, ON/OFF switches, door latching mechanisms, fire suppression systems, and timing devices.

Features:

- **Integral Lever Actuators**
- **Sealed to IP68S**
- **Double break circuit**
- **Logic level switching option tested to 1 million electrical cycles**
- **0.200" switch width**
- **Choice of 11 standard terminal styles or wire leads**
- **Momentary action**
- **RoHS compliant**



B3S-5 Standard Characteristics/Ratings:

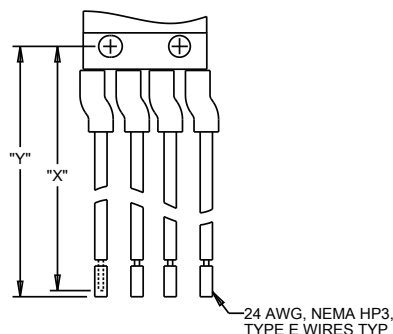
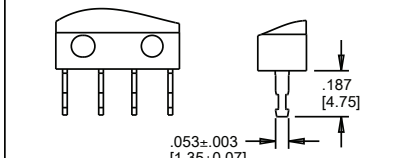
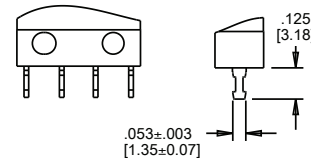
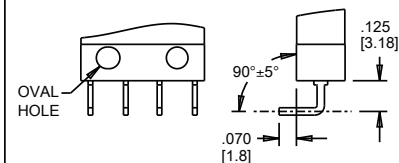
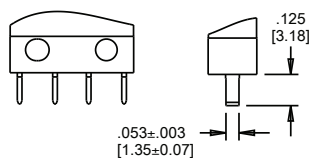
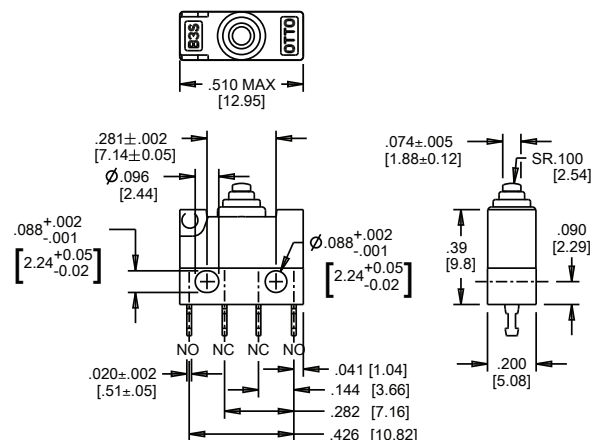
ELECTRICAL RATINGS: Sea Level @ 28VDC			
Rating	Load	Current	Life Cycles
High Level N.C. or N.O. Form X or Y	Resistive	8A	50,000
High Level SPDT Form C or Z	Resistive	5A	50,000
Logic Level @ 5VDC	Resistive	10mA	1,000,000
DWV	1000Vrms		
Mechanical Life:	1,000,000 cycles		
Seal:	IP68S		
Operating Temp Range:	-40°C to +85°C		
Operating Force:	See Part Number		
MATERIALS:			
Cover:	Blue Thermoplastic		
Case:	Blue Thermoset		
Boot:	Silicone Rubber		

B3S- 5 PART NUMBER CODE

B3S	—	X	X	X	X
Switch Width/ Actuator		Terminal Style	Lever Type and Force	Circuitry	Contact Rating
5. 0.200" Wide, Lever Actuator		0. Special - See Separate Product Drawing	1. Standard Straight 5.5 oz. Max Oper. Force	1. SPNO-DB, Form X	1. High Level Ratings
		1. PC Pins	2. "U" Shaped 5.5 oz. Max Oper. Force	2. SPNC-DB, Form Y	2. Logic Level Ratings
		2. Turret, 1/8" Long	3. In-Line Roller 6.4 oz. Max Oper. Force	3. SPDT, Form C	
		3. Turret, 3/16" Long	4. Perpendicular Roller 6.5 oz. Max Oper. Force	4. SPDT-DB, Form Z	
		4. Wire Wrap			
		5. Right Angle PC Pins			
		A. With Wires 6.0" Long			
		B. With Wires 12.0" Long			
		C. With Wires 18.0" Long			
		D. With Wires 24.0" Long			
		E. With Wires 30.0" Long			

SEALED, DOUBLE BREAK, SNAP-ACTION, SUBMINIATURE, INTEGRAL LEVERS

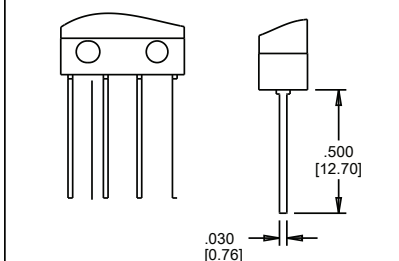
BASIC SWITCH DIMENSIONS (APPLIES TO ALL SWITCHES IN THIS DRAWING)



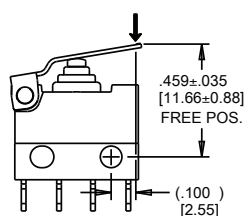
TERMINAL NO.	WIRE COLOR
1	BROWN
2	YELLOW
3	RED
4	BLUE

WIRE LENGTH CODE	DIM. "X"	DIM. "Y"
A	6.00±.38 [152.4±9.7]	6.09±.38 [154.7±9.7]
B	12.00±.50 [304.8±12.7]	12.09±.50 [307.1±12.7]
C	18.00±.50 [457.2±12.7]	18.09±.50 [459.5±12.7]
D	24.00±.50 [609.6±12.7]	24.09±.50 [611.9±12.7]
E	30.00±.75 [762.0±19.05]	30.09±.75 [764.3±19.05]

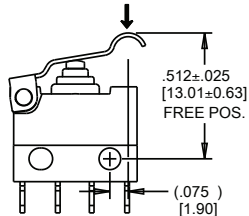
WIRE LENGTH FOR A, B, C, D, & E



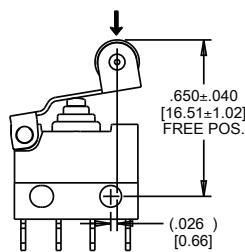
OPER. POINT: .378±.029
OVERTRAVEL: .010 MIN.
MOVE. DIFF.: .038±.019



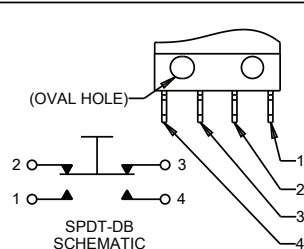
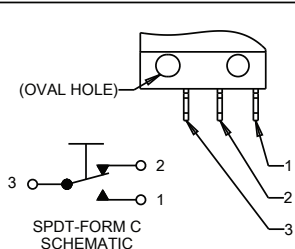
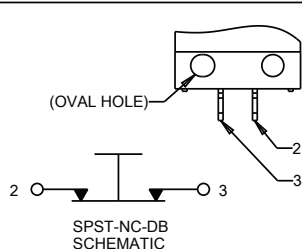
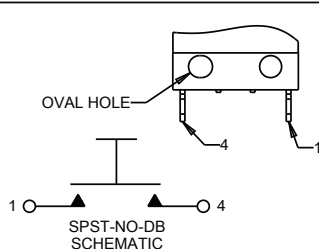
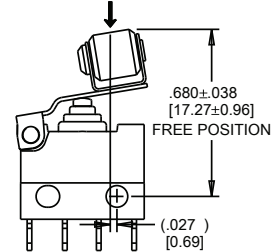
OPER. POINT: .448±.025
OVERTRAVEL: .010 MIN.
MOVE. DIFF.: .033±.017



OPER. POINT: .585±.030
OVERTRAVEL: .010 MIN.
MOVE. DIFF.: .036±.020



OPER. POINT: .609±.029
OVERTRAVEL: .010 MIN.
MOVE. DIFF.: .034±.019



Mouser Electronics

Authorized Distributor

Click to View Pricing, Inventory, Delivery & Lifecycle Information:

OTTO:

[B3S-51241](#) [B3S-52441](#) [B3S-5E131](#) [B3S-52112](#) [B3S-52442](#) [B3S-51432](#) [B3S-51332](#) [B3S-51141](#) [B3S-52331](#)