

# SEALED BASIC SWITCH WITH LEVERS

**B3S-5**  
SEALED BASIC  
SWITCHES

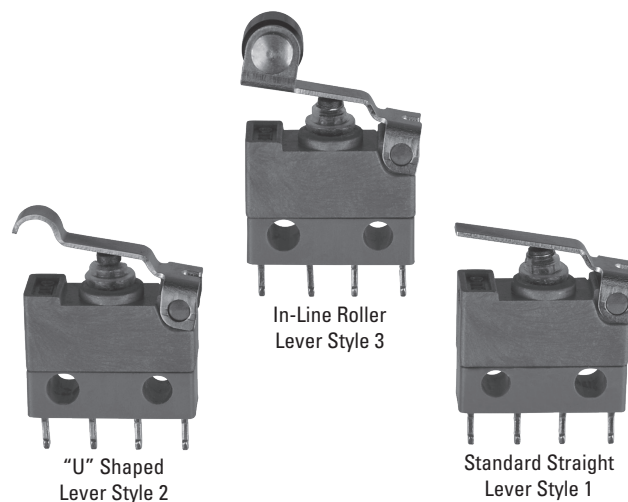
SEALED, DOUBLE BREAK, SNAP-ACTION, SUBMINIATURE, INTEGRAL LEVERS

The B3S-5 sealed, subminiature basic switch is made with an integral actuating lever, combining the switch and actuator into one assembly. Sealed to IP68S, the snap-action switch is tested to 1 million cycles at logic level, offering reliable operation in demanding applications and precision in terms of accuracy and repeatability.

The B3S-5 subminiature switch is designed for use in places where space is limited, including internally within toggle, pushbutton and limit switches. It works well in the aerospace, industrial and material handling markets for applications such as conveyor belts, forklifts, ON/OFF switches, door latching mechanisms, fire suppression systems, and timing devices.

## Features:

- **Integral Lever Actuators**
- **Sealed to IP68S**
- **Double break circuit**
- **Logic level switching option tested to 1 million electrical cycles**
- **0.200" switch width**
- **Choice of 11 standard terminal styles or wire leads**
- **RoHS compliant**



### B3S-5 Standard Characteristics/Ratings:

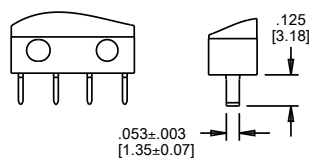
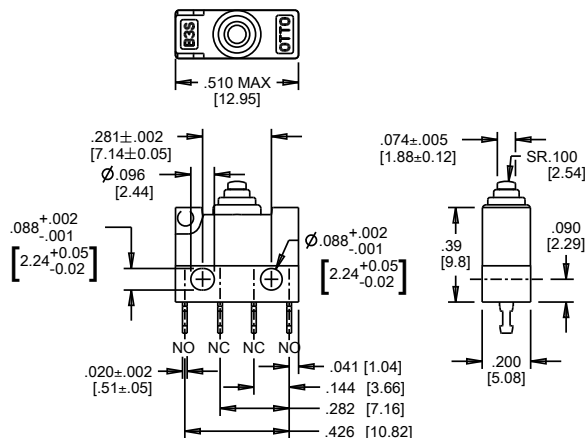
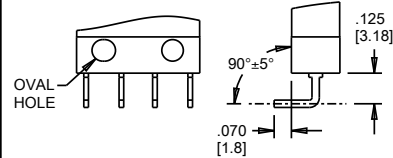
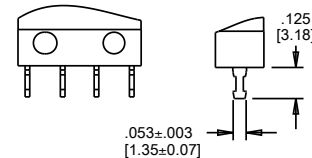
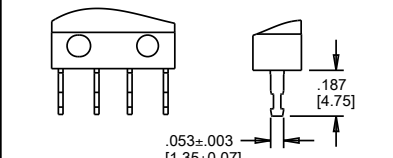
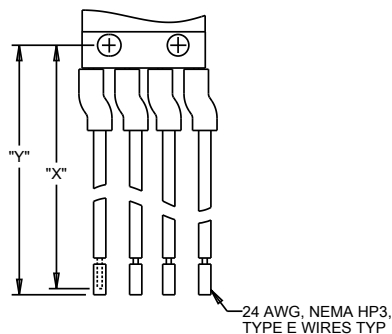
#### ELECTRICAL RATINGS: Sea Level @ 28VDC

Rating	Load	Current	Life Cycles
High Level N.C. or N.O. Form X or Y	Resistive	8A	50,000
High Level SPDT Form C or Z	Resistive	5A	50,000
Logic Level @ 5VDC	Resistive	10mA	1,000,000
DVV	1000Vrms		
Mechanical Life:	1,000,000 cycles		
Seal:	IP68S		
Operating Temp Range:	-40°C to +85°C		
Operating Force:	See Part Number		
MATERIALS:			
Cover:	Blue Thermoplastic		
Case:	Blue Thermoset		
Boot:	Silicone Rubber		

## B3S- 5 PART NUMBER CODE

B3S	—	X	X	X	X
<b>Switch Width/ Actuator</b>		<b>Terminal Style</b>	<b>Lever Type and Force</b>	<b>Circuitry</b>	<b>Contact Rating</b>
5. 0.200" Wide, Lever Actuator		0. Special - See Separate Product Drawing	1. Standard Straight 5.5 oz. Max Oper. Force	1. SPNO-DB, Form X	1. High Level Ratings
		1. PC Pins	2. "U" Shaped 5.5 oz. Max Oper. Force	2. SPNC-DB, Form Y	2. Logic Level Ratings
		2. Turret, 1/8" Long	3. In-Line Roller 6.4 oz. Max Oper. Force	3. SPDT, Form C	
		3. Turret, 3/16" Long		4. SPDT-DB, Form Z	
		4. Wire Wrap			
		5. Right Angle PC Pins			
		A. With Wires 6.0" Long			
		B. With Wires 12.0" Long			
		C. With Wires 18.0" Long			
		D. With Wires 24.0" Long			
		E. With Wires 30.0" Long			

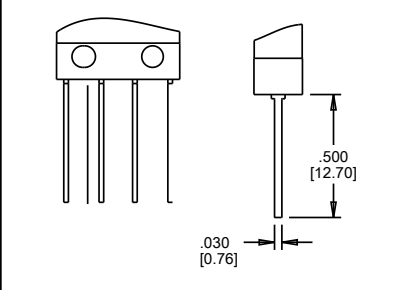
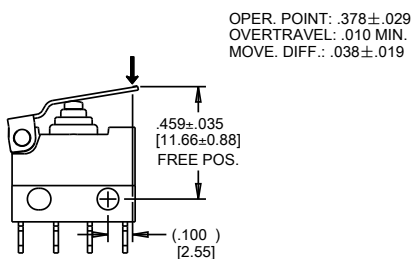
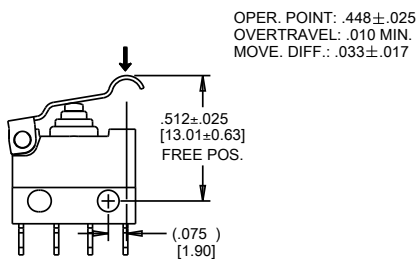
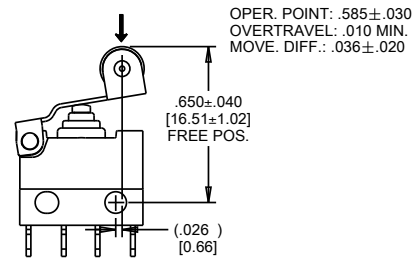
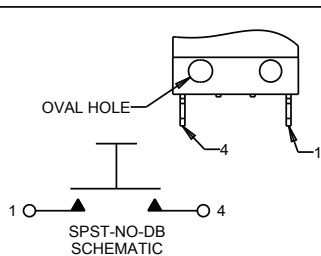
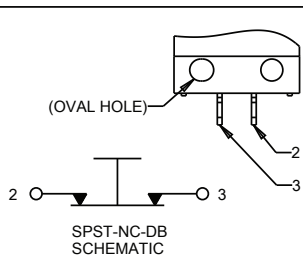
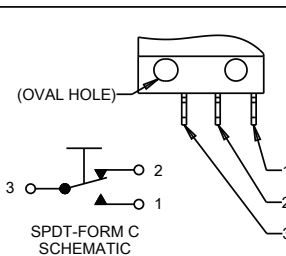
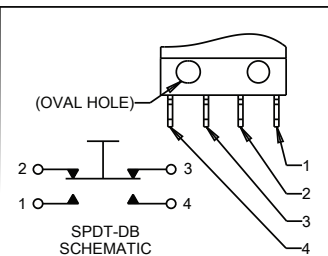
SEALED, DOUBLE BREAK, SNAP-ACTION, SUBMINIATURE, INTEGRAL LEVERS

**BASIC SWITCH DIMENSIONS**  
(APPLIES TO ALL SWITCHES IN THIS DRAWING)TERMINAL STYLE 1  
PC PINSTERMINAL STYLE 5  
RIGHT ANGLE PC PINSTERMINAL STYLE 2  
TURRET, 1/8" LONGTERMINAL STYLE 3  
TURRET, 3/16" LONG

TERMINAL NO.	WIRE COLOR
1	BROWN
2	YELLOW
3	RED
4	BLUE

WIRE LENGTH CODE	DIM. "X"	DIM. "Y"
A	6.00±.38 [152.4±9.7]	6.09±.38 [154.7±9.7]
B	12.00±.50 [304.8±12.7]	12.09±.50 [307.1±12.7]
C	18.00±.50 [457.2±12.7]	18.09±.50 [459.5±12.7]
D	24.00±.50 [609.6±12.7]	24.09±.50 [611.9±12.7]
E	30.00±.75 [762.0±19.05]	30.09±.75 [764.3±19.05]

WIRE LENGTH FOR A, B, C, D, &amp; E

TERMINAL STYLE 4  
WIRE WRAPSTANDARD STRAIGHT LEVER  
(LEVER TYPE OPTION 1)"U" SHAPED LEVER  
(LEVER TYPE OPTION 2)IN-LINE ROLLER LEVER  
(LEVER TYPE OPTION 3)CIRCUIT STYLE 1  
SPNO-DB, FORM XCIRCUIT STYLE 2  
SPNC-DB, FORM YCIRCUIT STYLE 3  
SPDT, FORM CCIRCUIT STYLE 4  
SPDT-DB, FORM Z

# Mouser Electronics

Authorized Distributor

Click to View Pricing, Inventory, Delivery & Lifecycle Information:

OTTO:

[B3S-52141](#) [B3S-52241](#) [B3S-52341](#)