

YM Series 4 Tumbler Miniature Switchlocks

Features/Benefits

- ***Snap-together assembly allows for pre-wiring of switch***
- ***Wire lead terminations available***
- ***4 Tumbler lock with positive detent***

Typical Applications

- **Cable TV connectors**
- **Automotive accessories**
- **Computers**



Models Available

Specifications

CONTACT RATING: Q contact material: 4 AMPS @ 125 V AC or 28 V DC; 2 AMPS @ 250 V AC (UL/CSA). 4 AMPS @ 125 V AC, 2 AMPS @ 250 V AC, T65, class 1 (VDE). See page L-17 for additional ratings.

ELECTRICAL LIFE: 10,000 make-and-break cycles at full load.

CONTACT RESISTANCE: Below 10 m Ω typ. initial @
2-4 V DC, 100 mA.

INSULATION RESISTANCE: $10^9 \Omega \text{ min.}$

DIELECTRIC STRENGTH: 1,000 Vrms min. @ sea level.

INDEXING: 90°:2 positions.

Materials

LOCK: Zinc alloy with stainless steel facing. 4 tumbler single bitted lock with integral detent mechanism.

KEYS: Two nickel plated brass keys with code number.

SWITCH HOUSING: 6/6 Nylon (UL 94V-2).

CONTACTS & TERMINALS: Q contact material: Copper, silver plated. See page L-17 for additional contact materials.

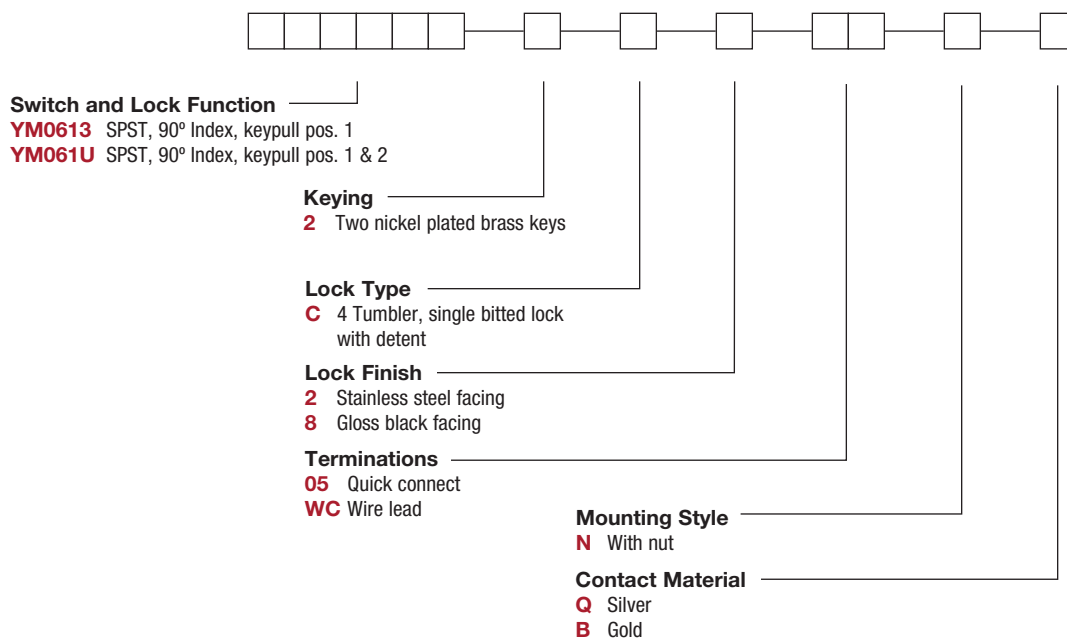
MOUNTING NUT: Brass, bright zinc plated.

NOTE: Any models supplied with Q or B contact material are RoHS compliant.

NOTE: Specifications and materials listed above are for switchlocks with standard options. For information on specific and custom switchlocks, consult Customer Service Center.

Build-A-Switch

To order, simply select desired option from each category and place in the appropriate box. Available options are shown and described on pages L-16 and L-17. For additional options not shown in catalog, consult Customer Service Center.



Switchlock

YM Series

4 Tumbler Miniature Switchlocks

SWITCH AND LOCK FUNCTION

| NO. POLES | MODEL NO. | SWITCH FUNCTION | | KEY PULL POSITIONS | LOCK CONFIGURATION | INDEXING | SCHEMATIC |
|-----------|-----------|-----------------|--------|--------------------|--------------------|----------|-----------|
| | | POS. 1 | POS. 2 | | | | |
| SP | YM0613 | OFF | ON | Position 1 | | 90° | |
| | YM061U | | | Positions 1 & 2 | | | |
| SPST | | | | | | | |

Top view of the switchlock showing POS. 1 and POS. 2. The diameter is .592 DIA (15,04 ø).

Side view of the switchlock with dimensions: 2.458 (62,43), 1.336 (33,93), .202 (5,13), .485 (12,32), .270 TYP (6,86), .110 x .032 (2,79) x (0,79) TYP, .415 (10,54). The mounting nut is M12 x 1.25 6g THD. (MOUNTING NUT INCLUDED).

Bottom view of the switchlock showing POS. 1 and POS. 2. The diameter is .592 DIA (15,04 ø).

Part number shown: YM0613C205NQ

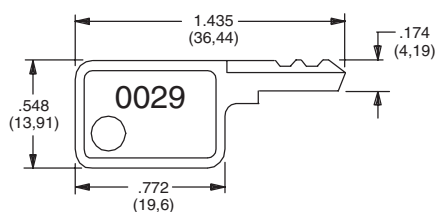
All models with all options when ordered with 'Q' contact material.

LEGEND

- = Detent Positions (90°)
- ⊙ = Key pull possible in these positions
- ⊙ = Stop Positions

KEYING

2 TWO NICKEL PLATED BRASS KEYS

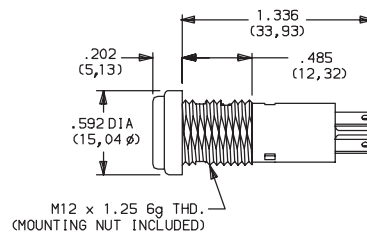


Key part number: 960B10029

NOTE: All orders keyed alike with code number on key. For more than one key code, replacement keys, or other special features, consult Customer Service Center.

LOCK TYPE

C 4 TUMBLER SINGLE BITTED LOCK WITH DETENT



LOCK FINISH

2 STAINLESS STEEL FACING

8 GLOSS BLACK FACING

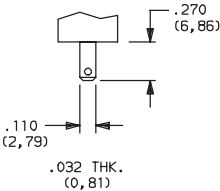


Dimensions are shown: Inch (mm)
Specifications and dimensions subject to change

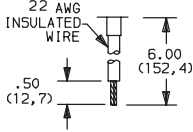
YM Series 4 Tumbler Miniature Switchlocks

TERMINATIONS

05 QUICK CONNECT



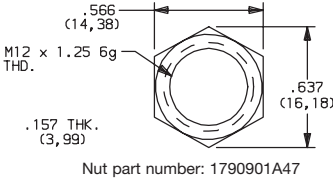
WC WIRE LEAD



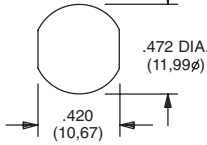
Black wire standard, other colors and lengths available, consult Customer Service Center. UL style 1015.

MOUNTING STYLE

N WITH NUT



PANEL MOUNTING



Panel thickness:
.300 (7, 62) max.

CONTACT MATERIAL

| OPTION CODE | RoHS COMPLIANT* | RoHS COMPATIBLE* | CONTACT AND TERMINAL MATERIAL | RATING | |
|-------------|-----------------|------------------|-------------------------------|-----------------------|--|
| Q | YES | YES | SILVER ² | POWER | 4 AMPS @ 125 V AC or 28 V DC; 2 AMPS @ 250 AC V AC (UL/CSA). |
| B | YES | YES | GOLD ¹ | LOW LEVEL/DRY CIRCUIT | 0.4 VA MAX. @ 20 V AC or DC MAX. |

* Note: See Technical Data section of this catalog for RoHS compliant and compatible definitions and specifications.

¹ CONTACTS & TERMINALS: Copper, with gold plate over nickel plate.

² CONTACTS & TERMINALS: Copper, silver plated (standard with all termination options).

All models **C&K** with all options when ordered with 'Q' contact material.

AVAILABLE HARDWARE



Key Code: 0029

PART NO. (ONE KEY)

960B10029

Material: Brass
Finish: Nickel plate



Dimensions are shown: Inch (mm)
Specifications and dimensions subject to change



Switchlock

Mouser Electronics

Authorized Distributor

Click to View Pricing, Inventory, Delivery & Lifecycle Information:

C&K Switches:

[960B10029](#) [YM06132C205NB](#)