

# SSW Series

## Surface Mount Mini Size 2 Pole Snap-acting Switches



### Features/Benefits

- Surface mount terminations
- IP67
- Redundant contacts
- Change over time <15ms
- Top and side actuation
- Low acoustics

### Typical Applications

- Automotive, ASIL related applications (electronic parking brake, by-wire functions)

### Specifications

FUNCTION: momentary action

CONTACT ARRANGEMENT: 2 change over contacts = DPDT

SWITCHING MODE: non shorting

TERMINAL: SMD terminals

### Mechanical

Type	Force (N)	Operating life* (cycles)	Travel (mm)
SSW115S01 R370	2.0 +/- 1	Up to 300 000	1.2

\* Under Max. electrical load

SHEAR FORCE RESISTANCE:

40N

SIDE ACTUATION:

cam angle at 40°

### Specifications

MAXIMUM POWER: 0.36 W

MAXIMUM VOLTAGE: 18 VDC

MINIMUM VOLTAGE: 5 V

MAXIMUM CURRENT: 20 mA

MINIMUM CURRENT: 1 mA

DIELECTRIC STRENGTH (50 Hz, 1min.): > 250 Vrms

CHANGEOVER TIME: < 15 ms

INSULATION RESISTANCE (100 V): > 100 MΩ

CONTACT RESISTANCE initial: 100 mΩ

### Environmental

OPERATING TEMPERATURE: -40°C to 85°C

STORAGE TEMPERATURE: -40°C to 85°C

SEALING: IP67

### Process

SOLDERING: Depending on the application, this component is suited to the following methods:

- Infrared Reflow Soldering in accordance with C&K product specification

TERMINALS: Silver plated

### Packaging

Reel containing 370 pieces

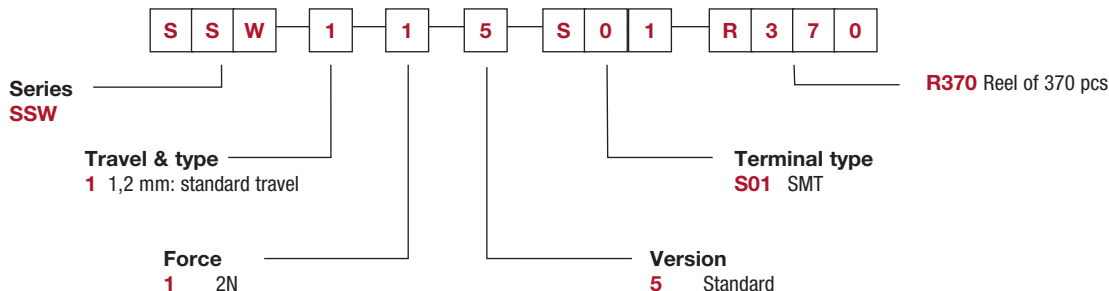
Reel dimensions according to EIA RS481. External diameter 380 mm

**NOTE:** This datasheet is describing main product characteristics. It cannot be considered as a contractual document for design in and subject to change without prior notice. We recommend contacting your closest sales representative to obtain contractual specifications. Product compliance to final application requirement remains customer responsibility.

### How To Order

Our easy build-a-switch concept allows you to mix and match options to create the switch you need. To order, select desired option from each category and place it in the appropriate box.

**For any part number different from those listed above, please consult your local representative.**



**NOTE:** other versions available upon request. Please consult your customer service.

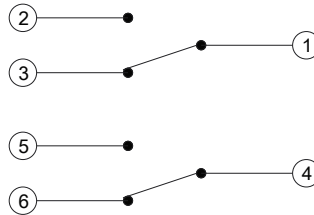


# SSW Series Surface Mount Mini Size 2 Pole Snap-acting Switches

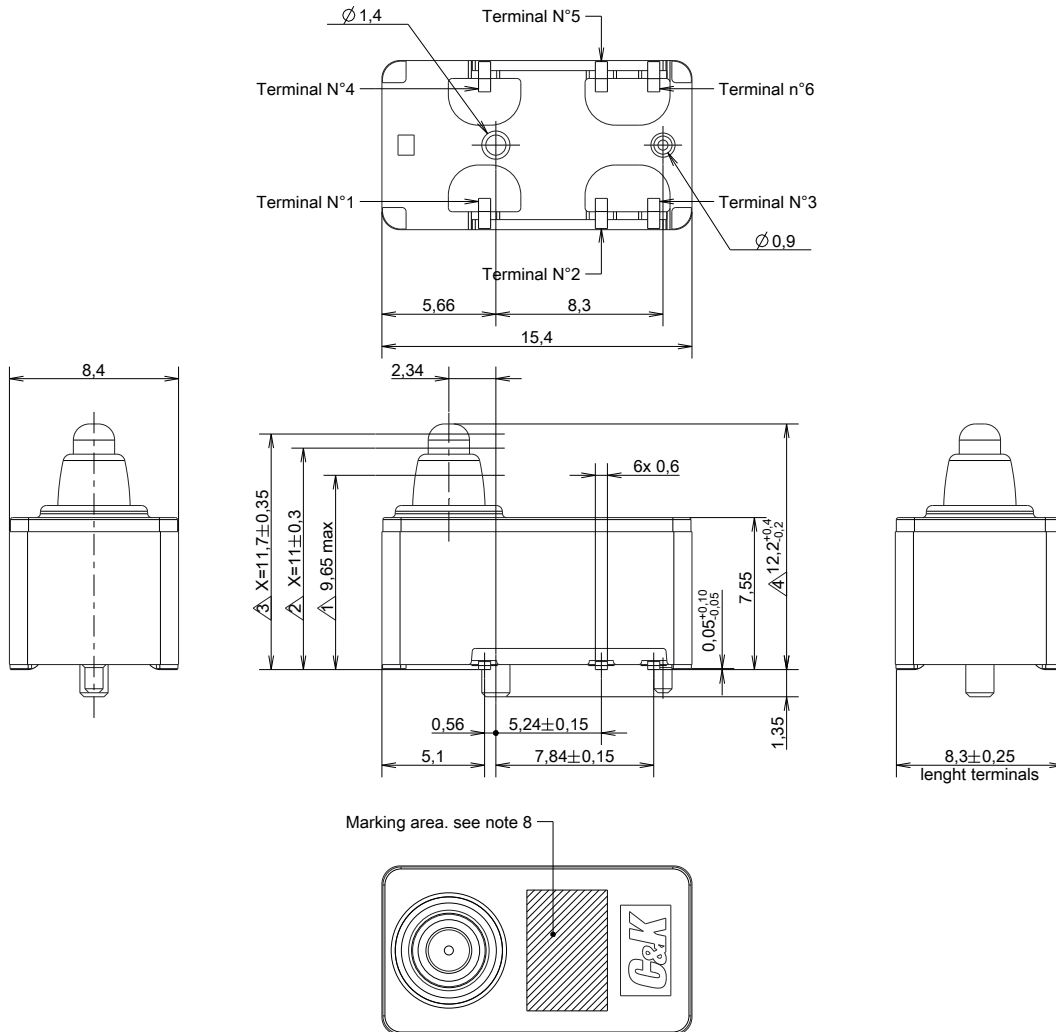
## TYPE CONFIGURATION

Type	Actuator height (mm)	Terminal 1-3 / 4-6 ON Terminal 1-2 / 4-5 OFF (mm)	Terminal 1-3 / 4-6 OFF Terminal 1-2 / 4-5 ON (mm)	Minimum height (mm)
<b>1</b>	12.2 + 0.4 / - 0.2	11.7 +/- 0.35	11.0 +/- 0.3	9.65

## ELECTRICAL ARRANGEMENT



## DIMENSIONS

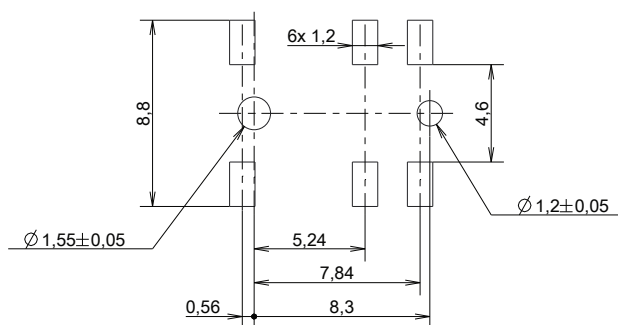


Dimensions are shown: Inches (mm)  
Specifications and dimensions subject to change

# SSW Series

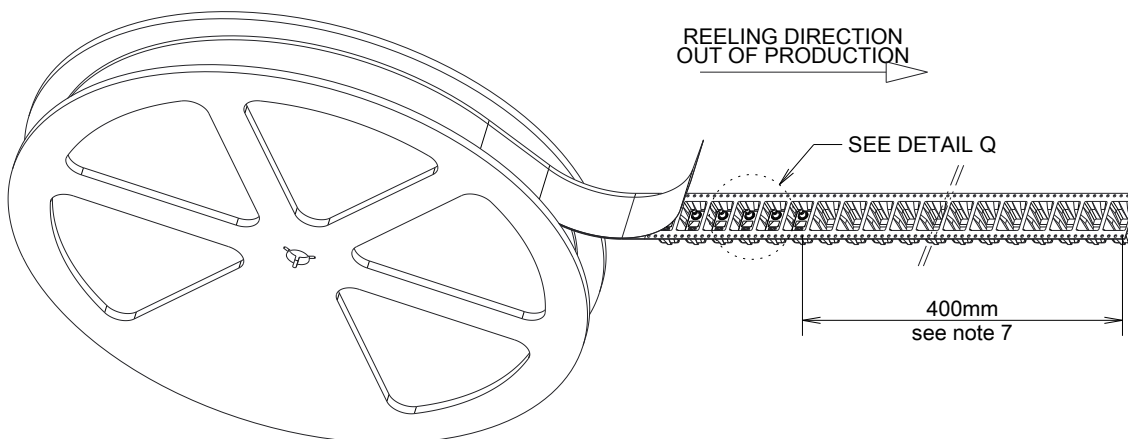
## Surface Mount Mini Size 2 Pole Snap-acting Switches

### RECOMMENDED PCB LAYOUT

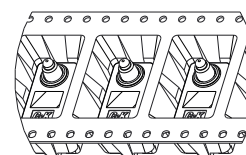


### TAPE & REEL

#### PACKAGING OF SWITCHES



- NOTES : 5 Quantity per reel 370 pcs.  
 6 Trailer length 160mm ( 10 cavities ).  
 7 Loader length 400mm ( 25 cavities ).



DETAIL Q  
SCALE (1/1)

# Mouser Electronics

Authorized Distributor

Click to View Pricing, Inventory, Delivery & Lifecycle Information:

C&K Switches:

SSW115S