

# PS-12G Series Pushbutton Switches



A  
Pushbutton

## Features/Benefits

- Latching pushbutton
- Non-shorting with lock
- 5 mm travel
- SPDT

## Typical Applications

- Automotive interior lighting
- Computer peripherals
- Appliances



PART NUMBER	PACKAGING	SCHEMATIC
<b>PS-12G01</b>	200 pieces	

## Dimensions

FOOTPRINT: 14 X 16.8 mm

HEIGHT: 18 mm

## Specifications

CONTACT RATING: 1A @ 14 VDC

INITIAL CONTACT RESISTANCE: 100 m ohms max.

INSULATION RESISTANCE: 100 M ohms min.

DIELECTRIC STRENGTH: 500 V AC (50-60 Hz) between open terminals and between the frame and terminal.

OPERATING LIFE: 20,000 cycles with load

OPERATING FORCE: 400 ± 100 gf

OPERATING POSITION: 3.6 ± 0.2 mm

TOTAL TRAVEL: 5 ± 0.3 mm

OPERATING TEMPERATURE: -20°C to 70°C

## Materials

KNOB: POM (UL 94HB)

HOUSING: PBT (UL 94V-0)

COVER: PBT (UL 94V-0)

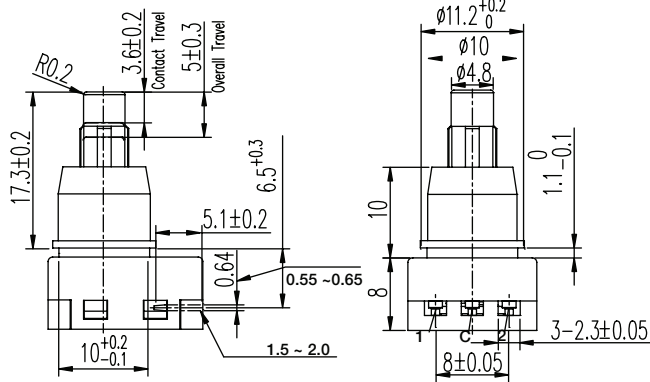
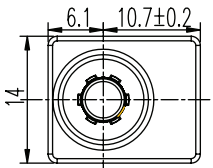
ROTOR: PBT (UL 94V-0)

SLIDER: POM (UL 94HB)

TERMINAL: Phosphor bronze, silver plated

SPRING: Stainless steel

CONTACT: Phosphor bronze, silver plated





# PS-12G Series Pushbutton Switches

A

Pushbutton



PART NUMBER	PACKAGING	SCHEMATIC
<b>PS-12G03</b>	200 pieces	

## Dimensions

FOOTPRINT: 14 X 16.8 mm

HEIGHT: 18.3 mm

## Specifications

CONTACT RATING: 2.2A @ 14.5 VDC

INITIAL CONTACT RESISTANCE: 50 m ohms max.

INSULATION RESISTANCE: 100 M ohms min.

DIELECTRIC STRENGTH: 500 V AC (50-60 Hz) between open terminals and between the frame and terminal.

OPERATING LIFE: 20,000 cycles with load

OPERATING FORCE: 650 ± 300 gf

OPERATING POSITION: 4.00 ± 0.2 mm

TOTAL TRAVEL: 4.5 ± 0.3 mm

OPERATING TEMPERATURE: -40°C to 85°C

## Materials

KNOB: POM (UL 94HB)

HOUSING: PBT & PA (UL 94V-0)

COVER: PBT (UL 94V-0)

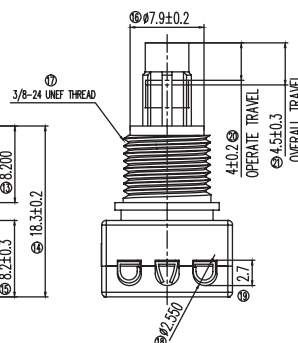
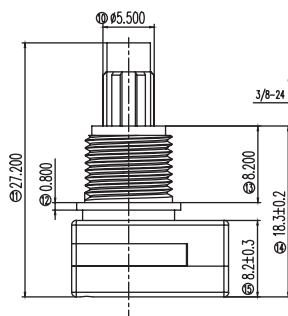
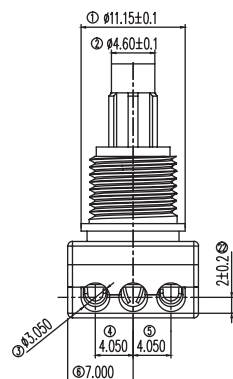
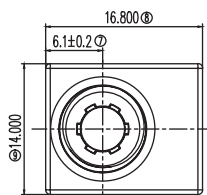
ROTOR: PBT (UL 94V-0)

SLIDER: POM (UL 94HB)

TERMINAL: Brass, silver plated

SPRING: Stainless steel

CONTACT: Phosphor bronze, silver plated



TYCO .062 Commercial Pin  
and Socket Connector  
PT# 770983-1

# PS-22 Series Subminiature Pushbutton Switches



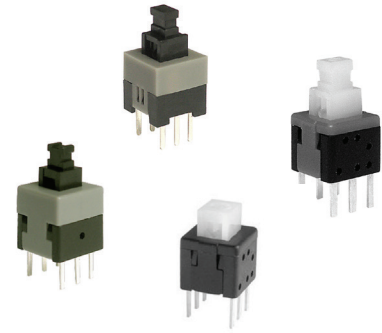
A  
Pushbutton

## Features/Benefits

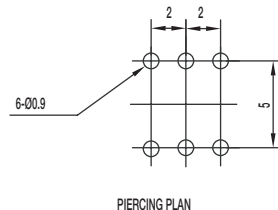
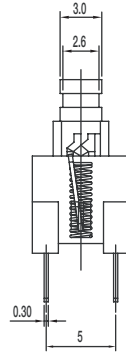
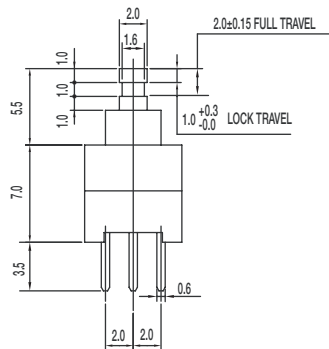
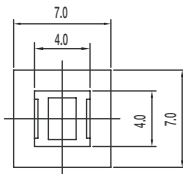
- Compact miniature push switch
- Momentary or latching options
- Shorting or non-shorting
- DPDT

## Typical Applications

- Industrial
- Automotive
- Audio and visual equipment



PART NUMBER	PACKAGING	SCHEMATIC
<b>PS-2203-L NS PA</b>	1,000 pieces	
<b>PS-2203-F NS PA</b>	1,000 pieces	



## Dimensions

FOOTPRINT: 7.0 x 7.0 mm

HEIGHT: 12.5 mm

## Specifications

CONTACT RATING: 0.1A @ 30 VDC

INITIAL CONTACT RESISTANCE: 30 m ohms max.

INSULATION RESISTANCE: 100 M ohms min.

DIELECTRIC STRENGTH: 500 V AC (50-60 Hz) between open terminals and between the frame and terminal.

OPERATING LIFE: 10,000 cycles with load

OPERATING FORCE:

200 ± 100 gf (1.96 ± 0.98N)

LOCK TRAVEL: 1 mm

TOTAL TRAVEL: 2 mm

OPERATING TEMPERATURE: -20°C to 70°C

## Materials

KNOB: POM Black

HOUSING: PA Black

COVER: POM Grey (latch) / White (Mom)

TERMINAL: Brass, silver plated

CONTACT CLIP: Phosphor bronze., silver plated

SPRING: Stainless steel

HOOK LOCK: Stainless steel (latch)



# PS-22 Series Subminiature Pushbutton Switches

A

Pushbutton



PART NUMBER	PACKAGING	SCHEMATIC
<b>PS-2206-L NS PA</b>	1,000 pieces	
<b>PS-2206-F NS PA</b>	1,000 pieces	

## Dimensions

FOOTPRINT: 8.0 x 8.0 mm

HEIGHT: 13.5 mm

## Specifications

CONTACT RATING: 0.1A @ 30 VDC

INITIAL CONTACT RESISTANCE: 70 m ohms max.

INSULATION RESISTANCE: 100 M ohms min.

DIELECTRIC STRENGTH: 500 V AC (50-60 Hz) between open terminals and between the frame and terminal.

OPERATING LIFE: 10,000 cycles with load

OPERATING FORCE:

200 ± 100 gf (1.96 ± 0.98N)

LOCK TRAVEL: 1.5 mm

TOTAL TRAVEL: 2.5 mm

OPERATING TEMPERATURE: -20°C to 70°C

## Materials

KNOB: POM Black

HOUSING: PA Black

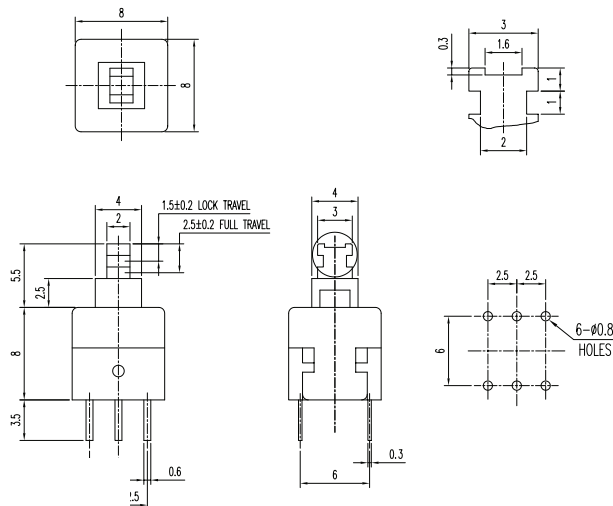
COVER: POM Grey (latch) / White (Mom)

TERMINAL: Brass, silver plated

CONTACT CLIP: Phosphor bronze, silver plated

SPRING: Stainless steel

HOOK LOCK: Stainless steel (latch)



PART NUMBER	PACKAGING	SCHEMATIC
<b>PS-2214-L NS PA</b>	1,000 pieces	
<b>PS-2214-F NS PA</b>	1,000 pieces	

## Dimensions

FOOTPRINT: 5.8 x 5.8 mm

HEIGHT: 7.5 mm

## Specifications

CONTACT RATING: 0.1A @ 30 VDC

INITIAL CONTACT RESISTANCE: 80 m ohms max.

INSULATION RESISTANCE: 100 M ohms min.

DIELECTRIC STRENGTH: 500 V AC (50-60 Hz) between open terminals and between the frame and terminal.

OPERATING LIFE: 10,000 cycles with load

OPERATING FORCE:

150 ± 50 gf (1.47 ± 0.49N)

LOCK TRAVEL: 1.45 mm

TOTAL TRAVEL: 2.3 mm

OPERATING TEMPERATURE: -20°C to 70°C

## Materials

KNOB: POM Natural (latch) / PA black

HOUSING: PA Black

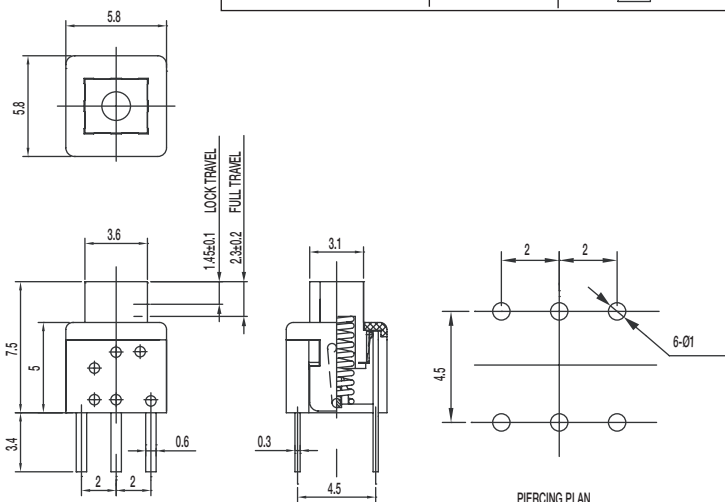
COVER: PA Black

TERMINAL: Brass, silver plated

CONTACT CLIP: Phosphor bronze, silver clad

SPRING: Stainless steel

HOOK LOCK: Stainless steel (latch)



# PS-22 Series Subminiature Pushbutton Switches



A  
Pushbutton



PART NUMBER	PACKAGING	SCHEMATIC
<b>PS-221605-L NS</b>	1,000 pieces	
<b>PS-221605-F NS</b>	1,000 pieces	

## Dimensions

FOOTPRINT: 5.8 x 5.8 mm

HEIGHT: 10 mm

## Specifications

CONTACT RATING: 0.1A @ 30 VDC / 2A @ 2 VDC

INITIAL CONTACT RESISTANCE: 80 m ohms max.

INSULATION RESISTANCE: 100 M ohms min.

DIELECTRIC STRENGTH: 500 V AC (50-60 Hz) between open terminals and between the frame and terminal.

OPERATING LIFE: 10,000 cycles with load

OPERATING FORCE:  
150 ± 50 gf (1.47 ± 0.49N)

LOCK TRAVEL: 1.3 mm

TOTAL TRAVEL: 2.1 mm

OPERATING TEMPERATURE: -20°C to 70°C

## Materials

KNOB: POM Natural

HOUSING: PA Black

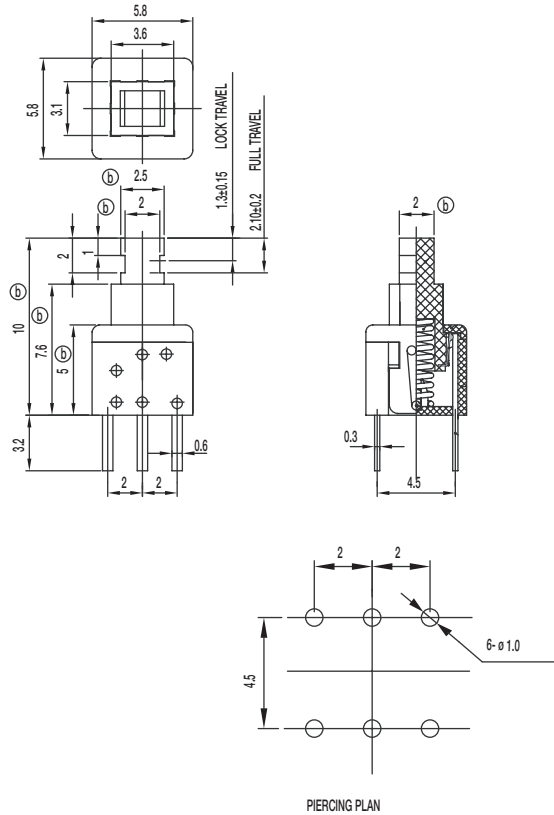
COVER: PC Grey

TERMINAL: Bras, silver plated

CONTACT CLIP: Phosphor bronze, silver clad

SPRING: Stainless steel

HOOK LOCK: Stainless steel (latch)

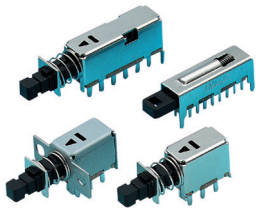




# PS Series Miniature Pushbutton Switches

A

Pushbutton



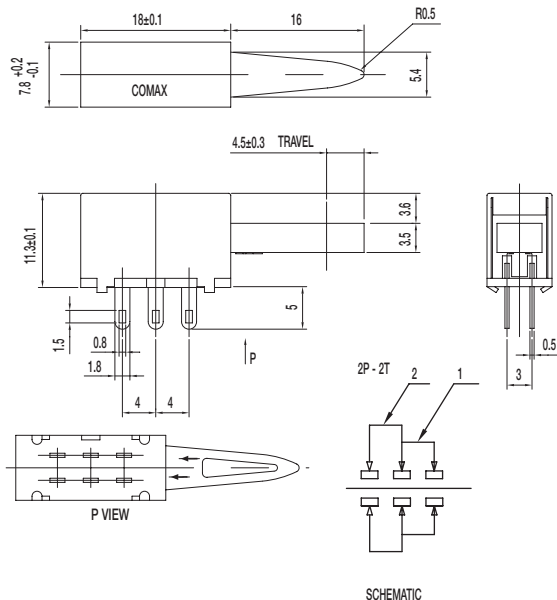
## Features/Benefits

- Miniature size
- Momentary or latching options
- Broad range of products

## Typical Applications

- Industrial
- Automotive
- Audio and visual equipment
- Telecommunications

### PS-22105 DPDT NON-SHORTING



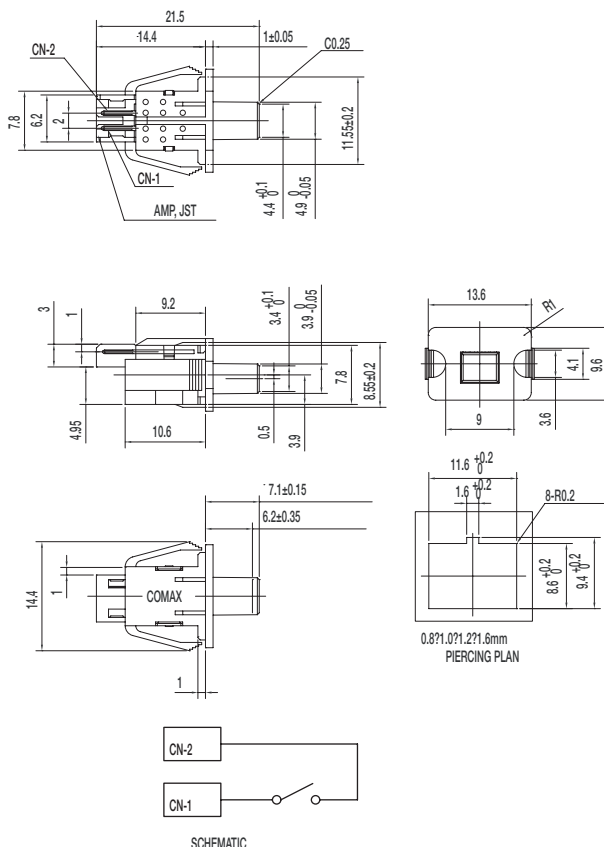
## Specifications

CONTACT RATING: 0.3A @ 30 VDC  
 INITIAL CONTACT RESISTANCE: 30 m ohms max.  
 INSULATION RESISTANCE: 100 M ohms min.  
 DIELECTRIC STRENGTH: 500 V AC (50-60 Hz) between open terminals and between the frame and terminal.  
 OPERATING LIFE: 10,000 cycles with load  
 OPERATING FORCE: 400 ± 150 gf (3.92 ± 1.47N)  
 TOTAL TRAVEL: 4.5 ± 0.3 mm  
 OPERATING TEMPERATURE: -20°C to 70°C

## Materials

FRAME: SECC  
 KNOB: POM (UL 94HB)  
 CONTACT PLATE: Silver clad  
 SPRING: SUS  
 TERMINAL: Silver plated

### PS-12C02-F NS SPST NON-SHORTING



## Specifications

CONTACT RATING: 100 μ A @ 3 VDC min. / 10mA @ 5 VDC max  
 INITIAL CONTACT RESISTANCE: 100 m ohms max.  
 INSULATION RESISTANCE: 100 M ohms min.  
 DIELECTRIC STRENGTH: 250 V AC (50-60 Hz) between open terminals and between the frame and terminal.  
 OPERATING LIFE: 100,000 cycles with load  
 OPERATING FORCE: 50 ± 15 gf (0.49 ± 0.147N)  
 PRE-TRAVEL: 6.20 ± 0.35 mm  
 OPERATING TEMPERATURE: -40°C to 85°C

## Materials

KNOB: POM (UL 94HB)  
 COVER: PA (UL 94V-0)  
 HOUSING: PA (UL 94V-0)  
 SPRING: SUS  
 TERMINAL: Silver plated



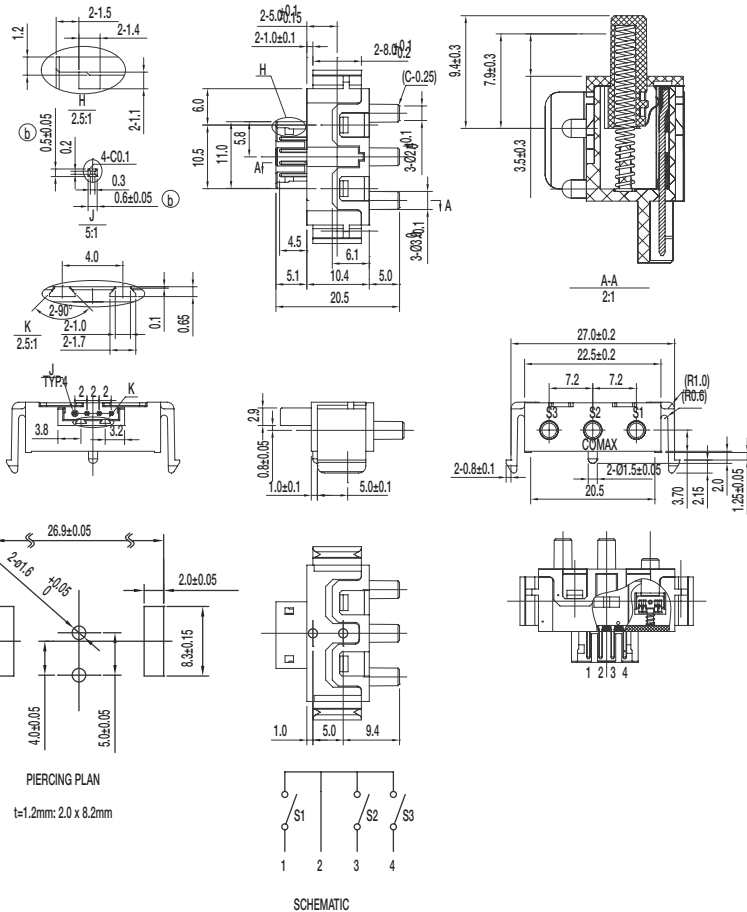
11 Jun 18

# PS Series Miniature Pushbutton Switches



A  
Pushbutton

## PS-32C02-F NS 1P3T NON-SHORTING



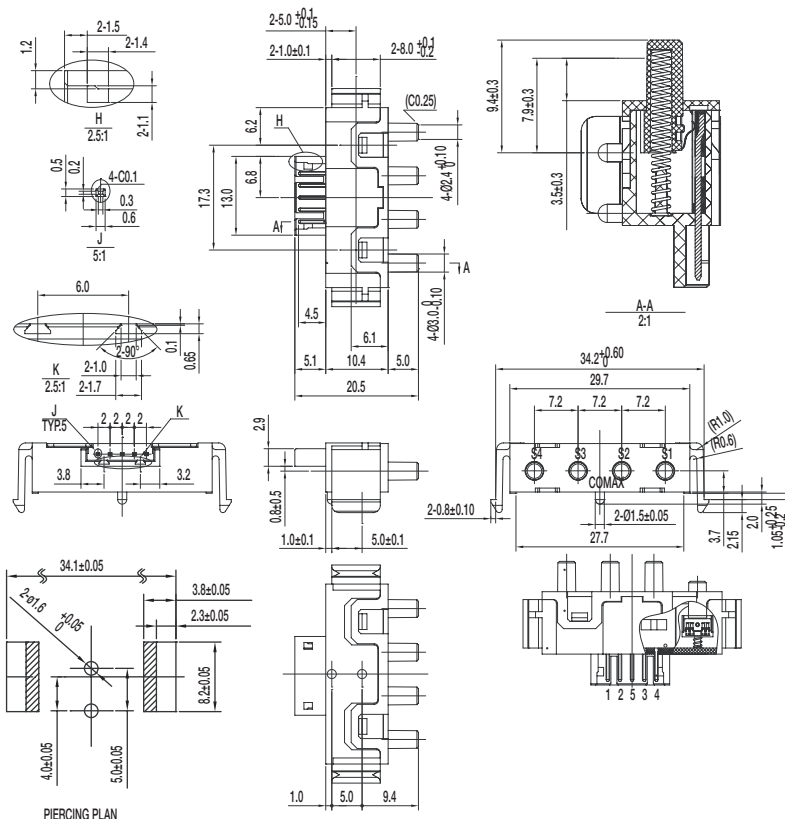
### Specifications

CONTACT RATING: 100  $\mu$  A @ 3 VDC min. /  
10mA @ 5 VDC max  
INITIAL CONTACT RESISTANCE: 100 m ohms max.  
INSULATION RESISTANCE: 100 M ohms min.  
DIELECTRIC STRENGTH: 250 V AC (50-60 Hz)  
between open terminals and between the  
frame and terminal.  
OPERATING LIFE: 100,000 cycles with load  
OPERATING FORCE:  $80 \pm 20$  gf ( $0.784 \pm 0.196$ N)  
PRE-TRAVEL:  $1.5 \pm 0.3$  mm  
OVER-TRAVEL:  $3.5 \pm 0.3$  mm  
TOTAL TRAVEL:  $5 \pm 0.3$  mm  
OPERATING TEMPERATURE:  $-20^{\circ}\text{C}$  to  $65^{\circ}\text{C}$

### Materials

KNOB: POM (UL 94HB)  
COVER: PA (UL 94V-0)  
HOUSING: PA (UL 94V-0)  
SPRING: SUS  
TERMINAL: Silver plated

## PS-42C02-F NS 1P4T NON-SHORTING



### Specifications

CONTACT RATING: 100  $\mu$  A @ 3 VDC min. /  
10mA @ 5 VDC max  
INITIAL CONTACT RESISTANCE: 100 m ohms max.  
INSULATION RESISTANCE: 100 M ohms min.  
DIELECTRIC STRENGTH: 250 V AC (50-60 Hz) between  
open terminals and between the frame and terminal.  
OPERATING LIFE: 100,000 cycles with load  
OPERATING FORCE:  $80 \pm 20$  gf ( $0.784 \pm 0.196$ N)  
PRE-TRAVEL:  $1.5 \pm 0.3$  mm  
OVER-TRAVEL:  $3.5 \pm 0.3$  mm  
TOTAL TRAVEL:  $5 \pm 0.3$  mm  
OPERATING TEMPERATURE:  $-20^{\circ}\text{C}$  to  $65^{\circ}\text{C}$

### Materials

KNOB: POM (UL 94HB)  
COVER: PA (UL 94V-0)  
HOUSING: PA (UL 94V-0)  
SPRING: SUS  
TERMINAL: Silver plated

Dimensions are shown: mm  
Specifications and dimensions subject to change

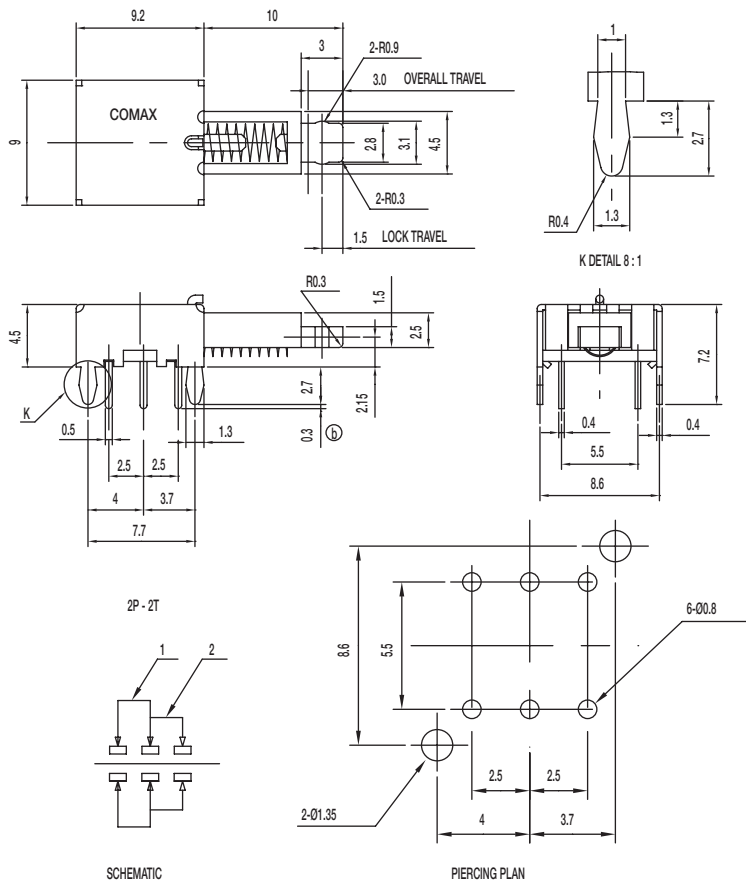
11 Jun 18



# PS Series Miniature Pushbutton Switches

Pushbutton  
A

## PS-22C08-G10 NS DPDT NON-SHORTING



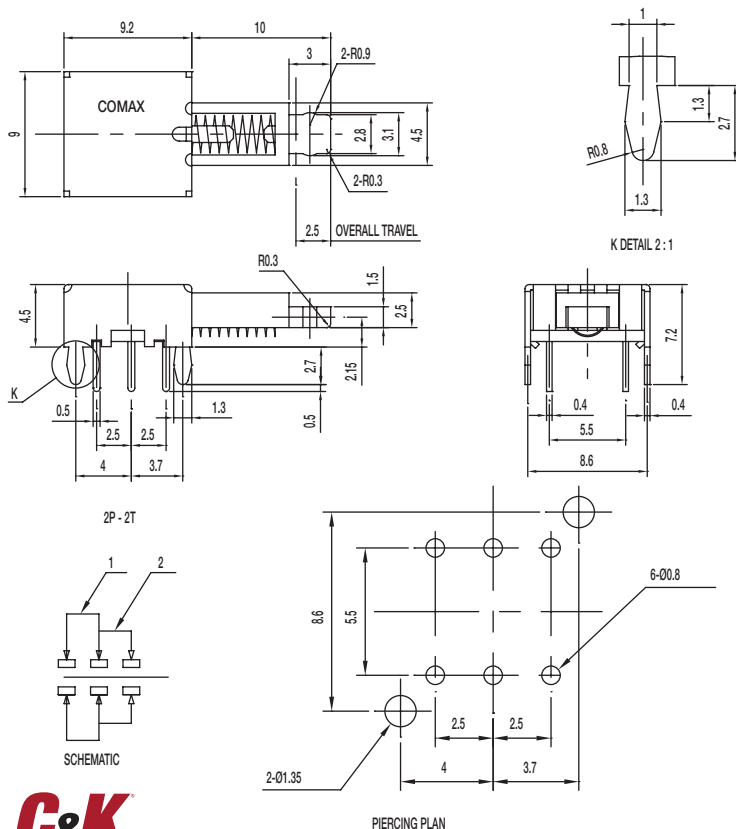
### Specifications

CONTACT RATING: 0.3A @ 30 VDC  
 INITIAL CONTACT RESISTANCE: 30 m ohms max.  
 INSULATION RESISTANCE: 100 M ohms min.  
 DIELECTRIC STRENGTH: 500 V AC (50-60 Hz) between open terminals and between the frame and terminal.  
 OPERATING LIFE: 10,000 cycles without load  
 OPERATING FORCE: 200 ± 100 gf (1.96 ± 0.98N)  
 LOCK TRAVEL: 1.5 ± 0.3 mm  
 OVER-TRAVEL: 3 ± 0.3 mm  
 OPERATING TEMPERATURE: -20°C to 70°C

### Materials

FRAME: SPCC  
 KNOB: POM (UL 94HB)  
 CONTACT: Silver plated  
 SPRING: SUS  
 TERMINAL: Silver plated

## PS-22E08-G10 NS DPDT NON-SHORTING



### Specifications

CONTACT RATING: 0.3A @ 30 VDC  
 INITIAL CONTACT RESISTANCE: 30 m ohms max.  
 INSULATION RESISTANCE: 100 M ohms min.  
 DIELECTRIC STRENGTH: 500 V AC (50-60 Hz) between open terminals and between the frame and terminal.  
 OPERATING LIFE: 10,000 cycles without load  
 OPERATING FORCE: 200 ± 100 gf (1.96 ± 0.98N)  
 TOTAL TRAVEL: 2.5 ± 0.3 mm  
 OPERATING TEMPERATURE: -20°C to 70°C

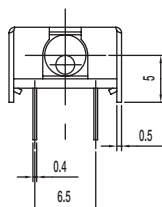
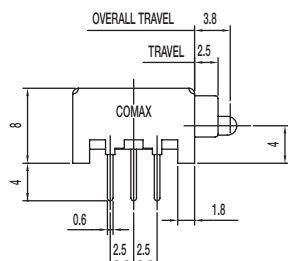
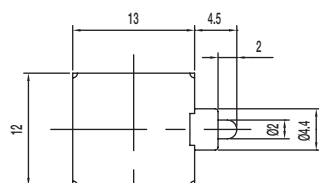
### Materials

FRAME: SPCC  
 KNOB: POM (UL 94HB)  
 CONTACT: Silver plated  
 SPRING: SUS  
 TERMINAL: Silver plated

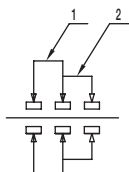




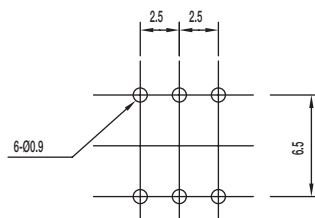
### PS-22E09-G 4.5 NS DPDT NON-SHORTING



2P - 2T



SCHEMATIC



PIERCING PLAN

#### Specifications

CONTACT RATING: 0.3A @ 30 VDC

INITIAL CONTACT RESISTANCE: 30 m ohms max.

INSULATION RESISTANCE: 100 M ohms min.

DIELECTRIC STRENGTH: 500 V AC (50-60 Hz) between open terminals and between the frame and terminal.

OPERATING LIFE: 10,000 cycles with load

OPERATING FORCE: 70 ± 20 gf (0.686 ± 0.196N)

TRAVEL: 2.5 ± 0.3 mm

TOTAL TRAVEL: 3.8 ± 0.3 mm

OPERATING TEMPERATURE: -20°C to 70°C

#### Materials

FRAME: SPCC

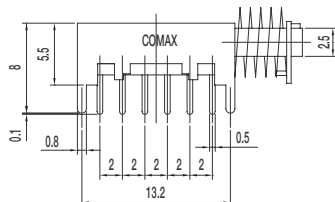
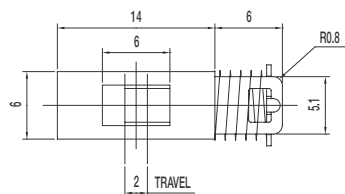
KNOB: POM (UL 94HB)

CONTACT: Silver plated

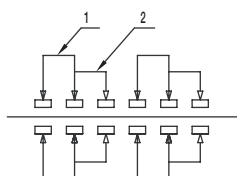
SPRING: SUS

TERMINAL: Silver plated

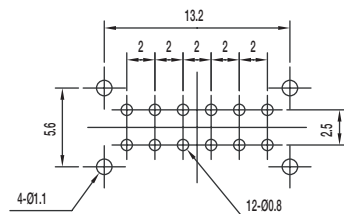
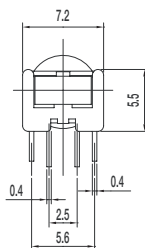
### PS-42D09-NS 4P2T NON-SHORTING



4P - 2T



SCHEMATIC



PIERCING PLAN

#### Specifications

CONTACT RATING: 0.3A @ 30 VDC

INITIAL CONTACT RESISTANCE: 30 m ohms max.

INSULATION RESISTANCE: 100 M ohms min.

DIELECTRIC STRENGTH: 500 V AC (50-60 Hz) between open terminals and between the frame and terminal.

OPERATING LIFE: 10,000 cycles with load

OPERATING FORCE: 250 ± 100 gf (2.45 ± 0.98N)

TRAVEL: 2 ± 0.3 mm

OPERATING TEMPERATURE: -20°C to 70°C

#### Materials

FRAME: SPCC

KNOB: POM (UL 94HB)

CONTACT PLATE: Silver plated

SPRING: Steel

TERMINAL: Silver plated

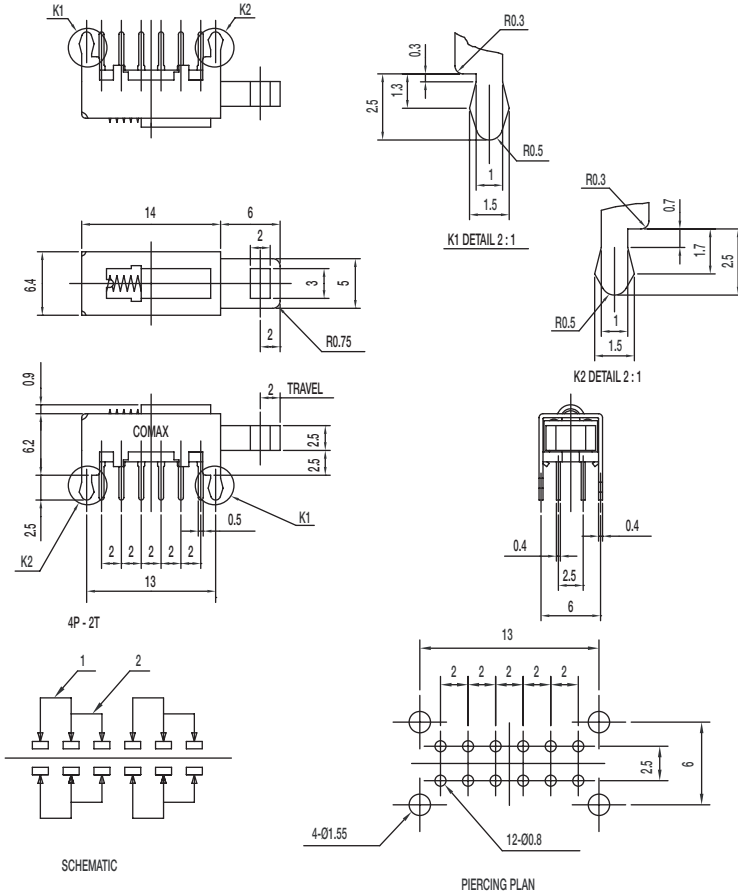


# PS Series Miniature Pushbutton Switches

Pushbutton

A

## PS-42D13-NS 4P2T NON-SHORTING



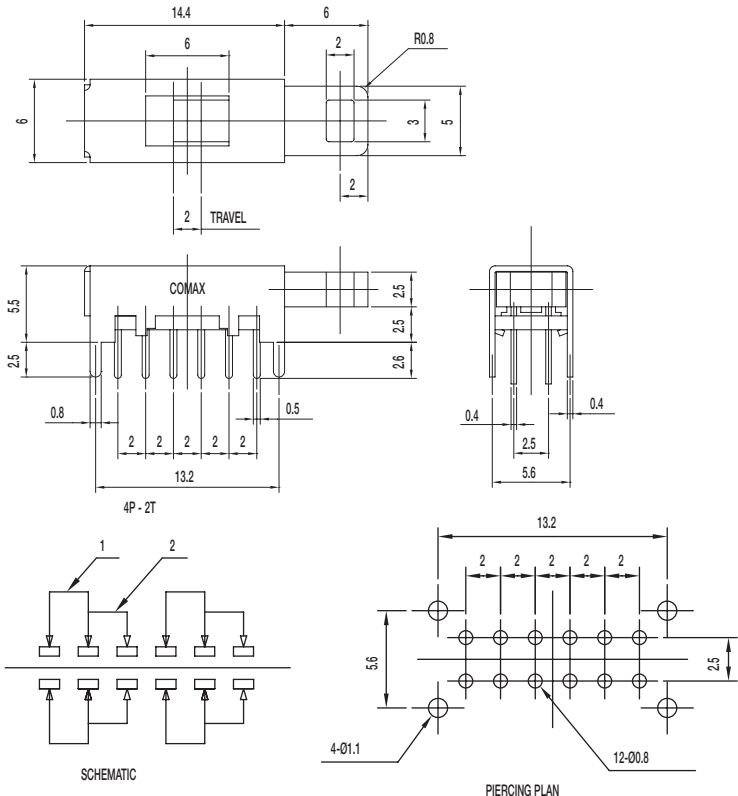
### Specifications

CONTACT RATING: 0.3A @ 30 VDC  
 INITIAL CONTACT RESISTANCE: 30 m ohms max.  
 INSULATION RESISTANCE: 100 M ohms min.  
 DIELECTRIC STRENGTH: 500 V AC (50-60 Hz) between open terminals and between the frame and terminal.  
 OPERATING LIFE: 10,000 cycles with load  
 OPERATING FORCE: 250 ± 100 gf (2.45 ± 0.98N)  
 TRAVEL: 2 ± 0.3 mm  
 OPERATING TEMPERATURE: -20°C to 70°C

### Materials

FRAME: SPCC  
 KNOB: POM (UL 94HB)  
 CONTACT: Silver plated  
 SPRING: Steel  
 TERMINAL: Silver plated

## PS-42D16-S 4P2T SHORTING



### Specifications

CONTACT RATING: 0.3A @ 30 VDC  
 INITIAL CONTACT RESISTANCE: 30 m ohms max.  
 INSULATION RESISTANCE: 100 M ohms min.  
 DIELECTRIC STRENGTH: 500 V AC (50-60 Hz) between open terminals and between the frame and terminal.  
 OPERATING LIFE: 10,000 cycles with load  
 OPERATING FORCE: 60 ± 30 gf (0.59 ± 0.29N)  
 TRAVEL: 2 ± 0.3 mm  
 OPERATING TEMPERATURE: -20°C to 70°C

### Materials

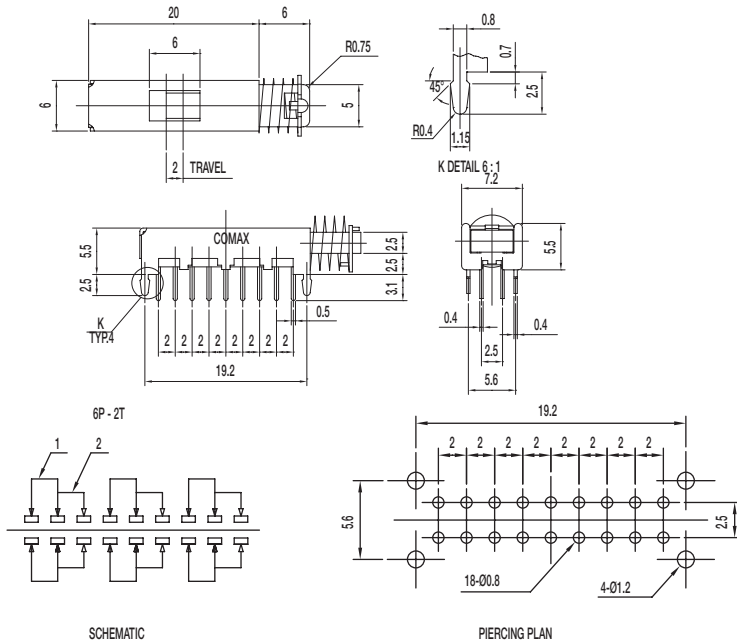
FRAME: SPCC  
 KNOB: POM (UL 94HB)  
 CONTACT: Silver plated  
 TERMINAL: Silver plated



11 Jun 18

Dimensions are shown: mm  
 Specifications and dimensions subject to change

### PS-62D10-S 6P2T SHORTING



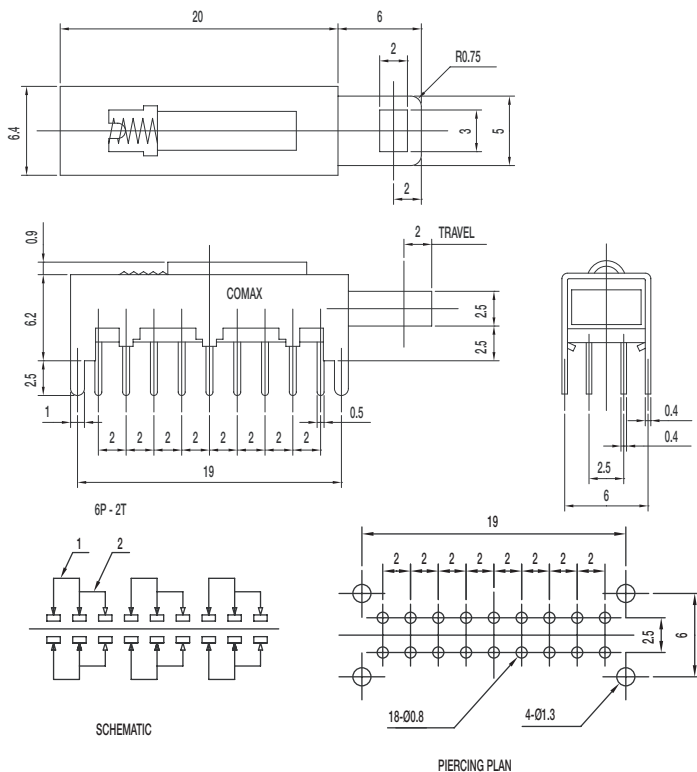
#### Specifications

CONTACT RATING: 0.3A @ 30 VDC  
 INITIAL CONTACT RESISTANCE: 30 m ohms max.  
 INSULATION RESISTANCE: 100 M ohms min.  
 DIELECTRIC STRENGTH: 500 V AC (50-60 Hz) between open terminals and between the frame and terminal.  
 OPERATING LIFE: 10,000 cycles with load  
 OPERATING FORCE:  $250 \pm 100$  gf ( $2.45 \pm 0.98$ N)  
 TRAVEL:  $2 \pm 0.3$  mm  
 OPERATING TEMPERATURE: -20°C to 70°C

#### Materials

FRAME: SPCC  
 KNOB: POM (UL 94HB)  
 CONTACT: Silver plated  
 SPRING: Steel  
 TERMINAL: Silver plated

### PS-62D13-S 6P2T SHORTING



#### Specifications

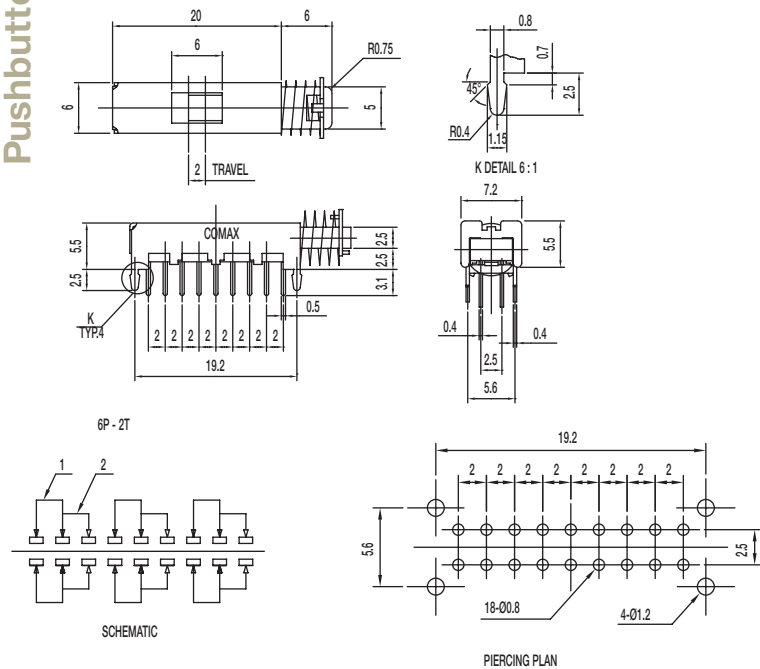
CONTACT RATING: 0.3A @ 30 VDC  
 INITIAL CONTACT RESISTANCE: 30 m ohms max.  
 INSULATION RESISTANCE: 100 M ohms min.  
 DIELECTRIC STRENGTH: 500 V AC (50-60 Hz) between open terminals and between the frame and terminal.  
 OPERATING LIFE: 10,000 cycles with load  
 OPERATING FORCE:  $300 \pm 100$  gf ( $2.94 \pm 0.98$ N)  
 TRAVEL:  $2 \pm 0.3$  mm  
 OPERATING TEMPERATURE: -20°C to 70°C

#### Materials

FRAME: SPCC  
 KNOB: POM (UL 94HB)  
 CONTACT PLATE: Silver plated  
 SPRING: Steel  
 TERMINAL: SUS



# Pushbutton



## Specifications

CONTACT RATING: 0.3A @ 30 VDC

INITIAL CONTACT RESISTANCE: 30 m ohms max.

INSULATION RESISTANCE: 100 M ohms min.

DIELECTRIC STRENGTH: 500 V AC (50-60 Hz) between open terminals and between the frame and terminal.

OPERATING LIFE: 10,000 cycles with load

OPERATING FORCE:  $250 \pm 100$  gf ( $2.45 \pm 0.98$ N)

TRAVEL:  $2 \pm 0.3$  mm

OPERATING TEMPERATURE: -20°C to 70°C

## Materials

FRAME: SPCC

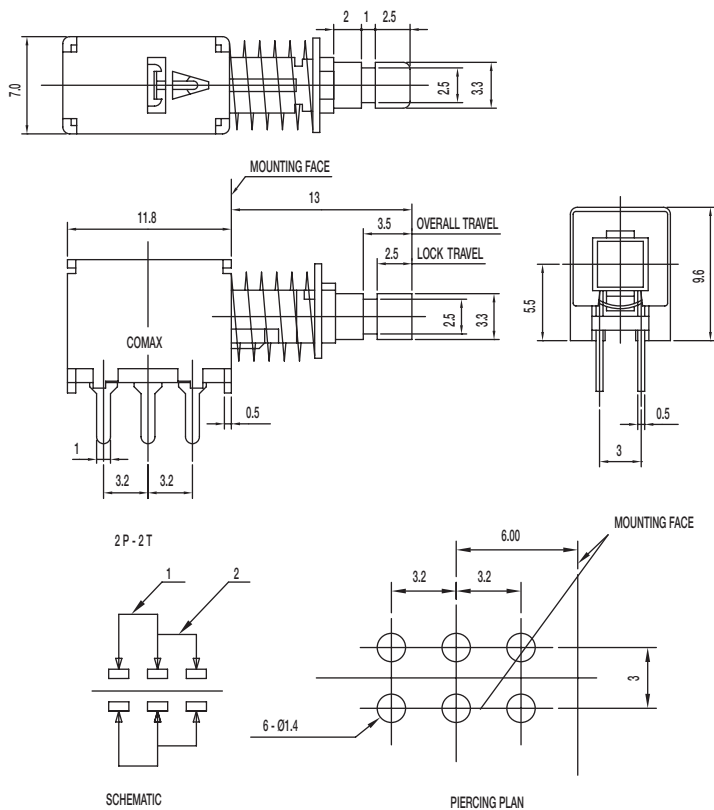
KNOB: POM (UL 94HB)

CONTACT: Silver plated

SPRING: Steel

TERMINAL: Silver plated

**PS-22E02-G13 S** DPDT SHORTING WITH LOCK



## Specifications

CONTACT RATING: 0.3A @ 30 VDC

INITIAL CONTACT RESISTANCE: 30 m ohms max.

INSULATION RESISTANCE: 100 M ohms min.

DIELECTRIC STRENGTH: 500 V AC (50-60 Hz) between open terminals and between the frame and terminal.

OPERATING LIFE: 10,000 cycles with load

OPERATING FORCE:  $300 \pm 100$  gf ( $2.94 \pm 0.98$ N)

LOCK TRAVEL:  $2.5 \pm 0.3$  mm

TOTAL TRAVEL:  $3.5 \pm 0.3$  mm

OPERATING TEMPERATURE: -20°C to 70°C

## Materials

FRAME: SPCC

KNOB: POM (UL 94HB)

CONTACT: Silver plated

SPRING: Steel

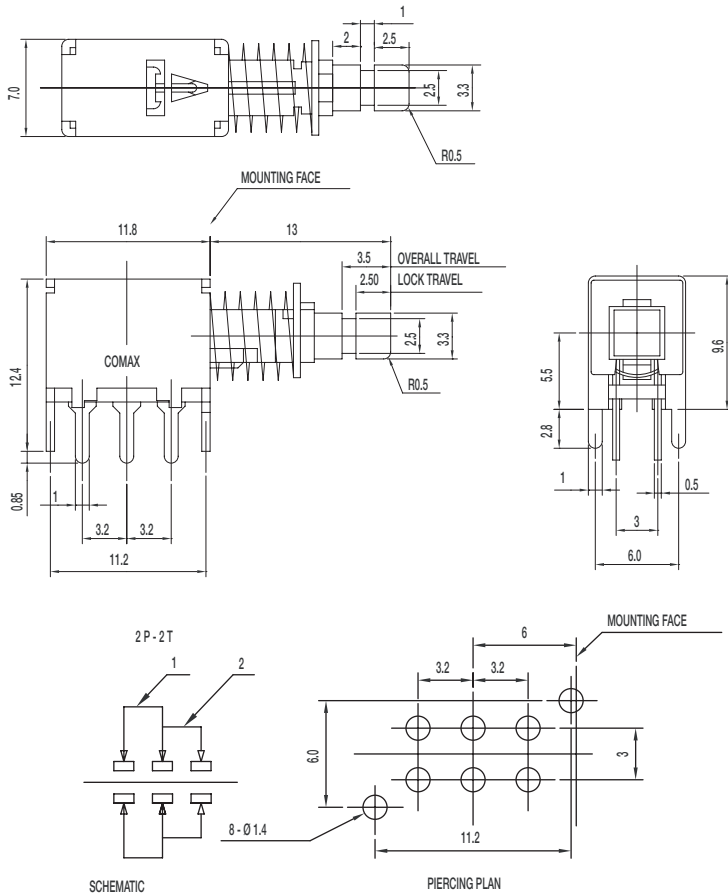
TERMINAL: Silver plated

# PS Series Miniature Pushbutton Switches



A  
Pushbutton

## PS-22E04-G13 NS DPDT NON-SHORTING WITH LOCK



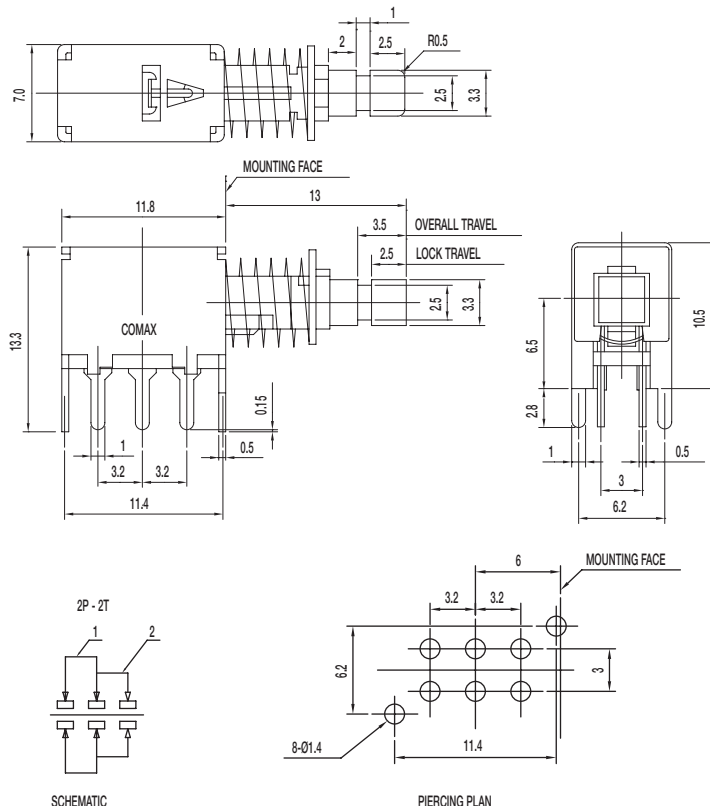
### Specifications

CONTACT RATING: 0.3A @ 30 VDC  
INITIAL CONTACT RESISTANCE: 30 m ohms max.  
INSULATION RESISTANCE: 100 M ohms min.  
DIELECTRIC STRENGTH: 500 V AC (50-60 Hz) between open terminals and between the frame and terminal.  
OPERATING LIFE: 10,000 cycles with load  
OPERATING FORCE:  $300 \pm 100$  gf ( $2.94 \pm 0.98$ N)  
LOCK TRAVEL:  $2.5 \pm 0.3$  mm  
TOTAL TRAVEL:  $3.5 \pm 0.3$  mm  
OPERATING TEMPERATURE: -20°C to 70°C

### Materials

FRAME: SPCC  
KNOB: POM (UL 94HB)  
CONTACT: Silver plated  
SPRING: Steel  
TERMINAL: Silver plated

## PS-22E44-G13 NS DPDT NON-SHORTING WITH LOCK



### Specifications

CONTACT RATING: 0.3A @ 30 VDC  
INITIAL CONTACT RESISTANCE: 30 m ohms max.  
INSULATION RESISTANCE: 100 M ohms min.  
DIELECTRIC STRENGTH: 500 V AC (50-60 Hz) between open terminals and between the frame and terminal.  
OPERATING LIFE: 10,000 cycles with load  
OPERATING FORCE:  $300 \pm 100$  gf ( $2.94 \pm 0.98$ N)  
LOCK TRAVEL:  $2.5 \pm 0.3$  mm  
TOTAL TRAVEL:  $3.5 \pm 0.3$  mm  
OPERATING TEMPERATURE: -20°C to 70°C

### Materials

FRAME: SPCC  
KNOB: POM (UL 94HB)  
CONTACT: Silver plated  
SPRING: Steel  
TERMINAL: Silver plated

**C&K**

11 Jun 18

Dimensions are shown: mm  
Specifications and dimensions subject to change

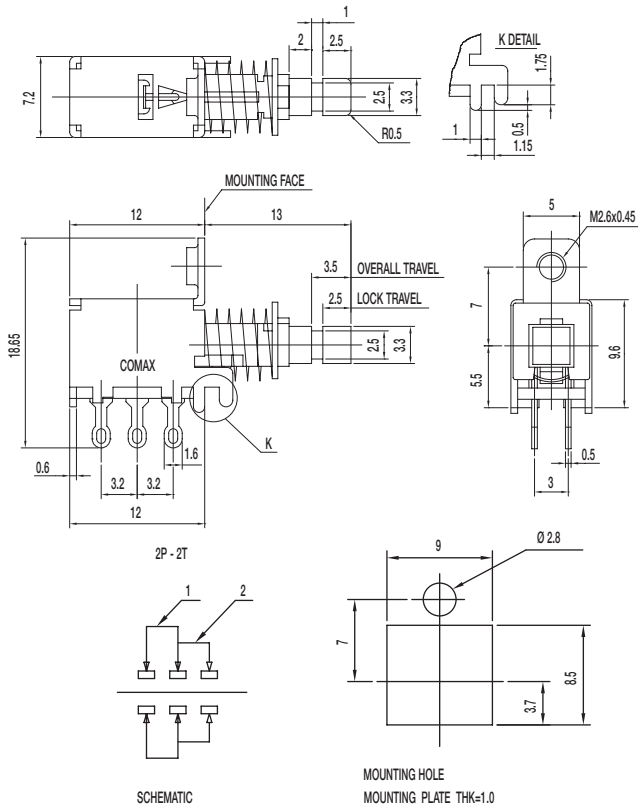


# PS Series Miniature Pushbutton Switches

A

Pushbutton

## PS-22E75-G13 NS DPDT NON-SHORTING WITH LOCK



### Specifications

CONTACT RATING: 0.3A @ 30 VDC

INITIAL CONTACT RESISTANCE: 30 m ohms max.

INSULATION RESISTANCE: 100 M ohms min.

DIELECTRIC STRENGTH: 500 V AC (50-60 Hz) between open terminals and between the frame and terminal.

OPERATING LIFE: 10,000 cycles with load

OPERATING FORCE: 300 ± 100 gf (2.94 ± 0.98N)

LOCK TRAVEL: 2.5 ± 0.3 mm

TOTAL TRAVEL: 3.5 ± 0.3 mm

OPERATING TEMPERATURE: -20°C to 70°C

### Materials

FRAME: SPCC

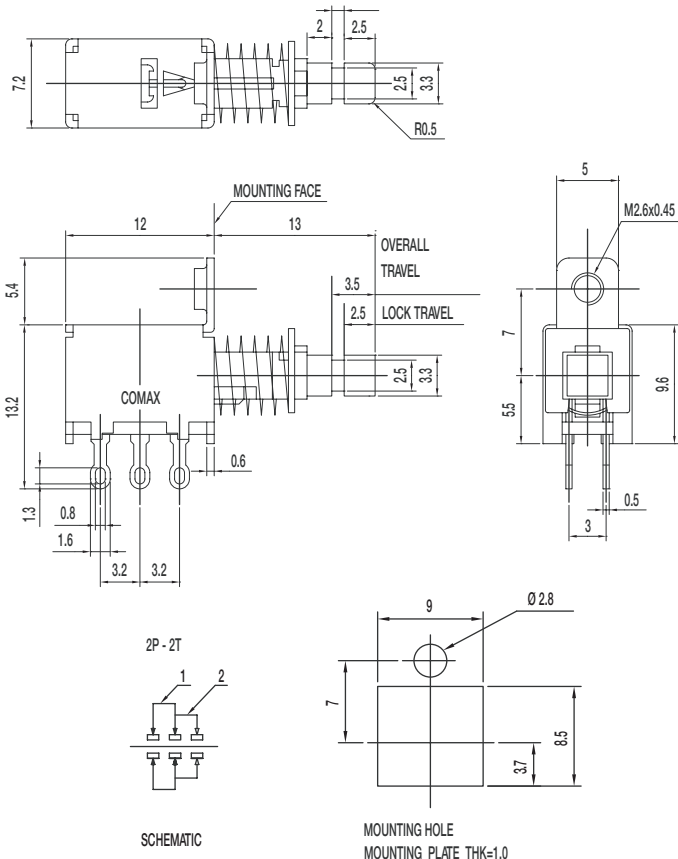
KNOB: POM (UL 94HB)

CONTACT: Silver plated

SPRING: Steel

TERMINAL: Silver plated

## PS-22E95-G13 NS DPDT NON-SHORTING WITH LOCK



### Specifications

CONTACT RATING: 0.3A @ 30 VDC

INITIAL CONTACT RESISTANCE: 30 m ohms max.

INSULATION RESISTANCE: 100 M ohms min.

DIELECTRIC STRENGTH: 500 V AC (50-60 Hz) between open terminals and between the frame and terminal.

OPERATING LIFE: 10,000 cycles with load

OPERATING FORCE: 300 ± 100 gf (2.94 ± 0.98N)

LOCK TRAVEL: 2.5 ± 0.3 mm

TOTAL TRAVEL: 3.5 ± 0.3 mm

OPERATING TEMPERATURE: -20°C to 70°C

### Materials

FRAME: SPCC

KNOB: POM (UL 94HB)

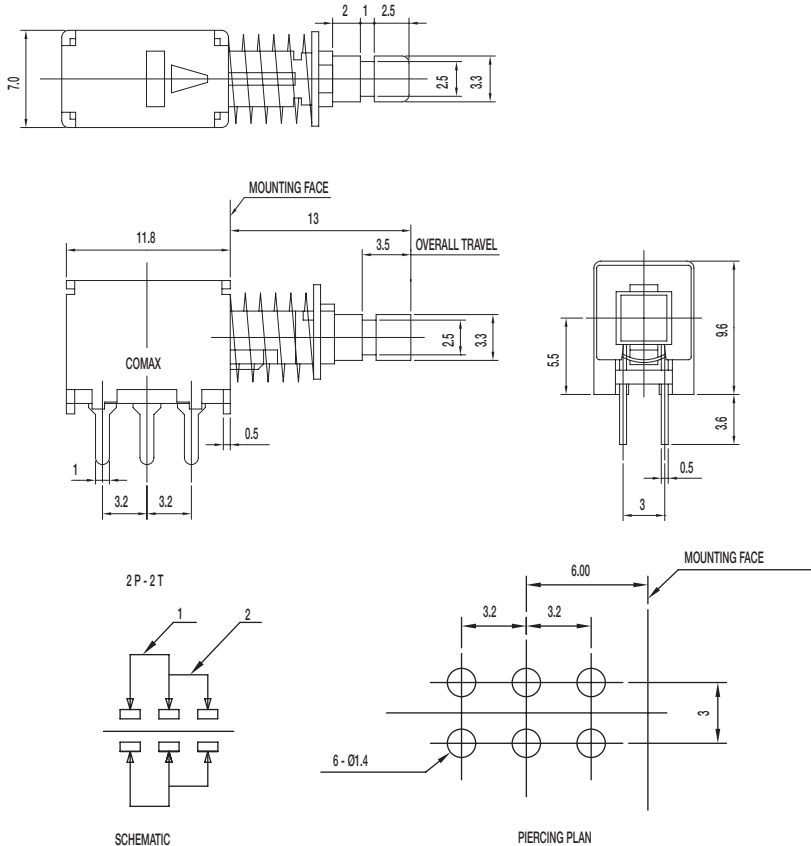
CONTACT: Silver plated

SPRING: Steel

TERMINAL: Silver plated



### PS-22F02-G13 S DPDT SHORTING



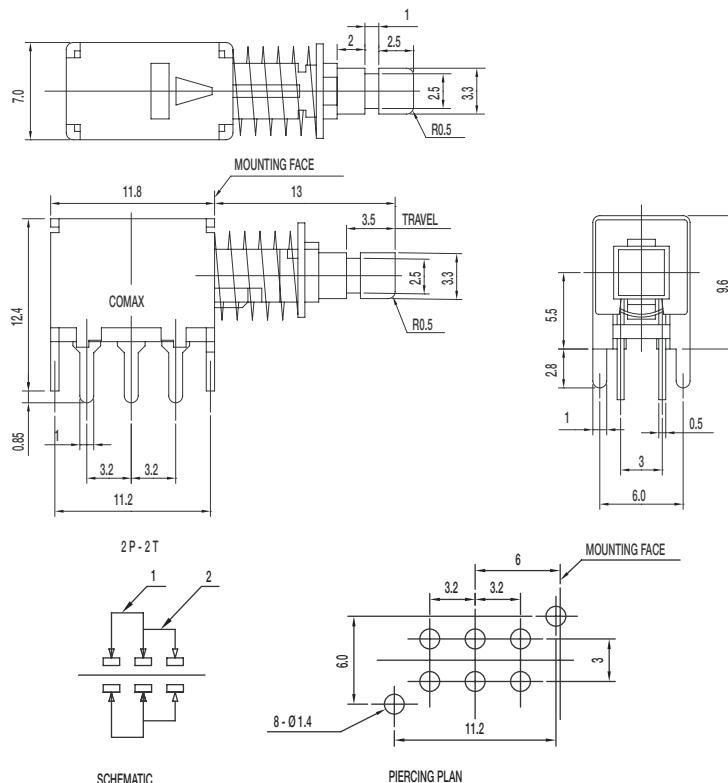
#### Specifications

CONTACT RATING: 0.3A @ 30 VDC  
 INITIAL CONTACT RESISTANCE: 30 m ohms max.  
 INSULATION RESISTANCE: 100 M ohms min.  
 DIELECTRIC STRENGTH: 500 V AC (50-60 Hz)  
 between openterminals and between the frame  
 and terminal.  
 OPERATING LIFE: 10,000 cycles with load  
 OPERATING FORCE:  $300 \pm 100$  gf ( $2.94 \pm 0.98$ N)  
 TOTAL TRAVEL:  $3.5 \pm 0.3$  mm  
 OPERATING TEMPERATURE:  $-20^{\circ}\text{C}$  to  $70^{\circ}\text{C}$

#### Materials

FRAME: SPCC  
 KNOB: POM (UL 94HB)  
 CONTACT: Silver plated  
 SPRING: Steel  
 TERMINAL: Silver plated

### PS-22F04-G13 NS DPDT NON\_SHORTING



#### Specifications

CONTACT RATING: 0.3A @ 30 VDC  
 INITIAL CONTACT RESISTANCE: 30 m ohms max.  
 INSULATION RESISTANCE: 100 M ohms min.  
 DIELECTRIC STRENGTH: 500 V AC (50-60 Hz) between open  
 terminals and between the frame and terminal.  
 OPERATING LIFE: 10,000 cycles with load  
 OPERATING FORCE:  $300 \pm 100$  gf ( $2.94 \pm 0.98$ N)  
 TOTAL TRAVEL:  $3.5 \pm 0.3$  mm  
 OPERATING TEMPERATURE:  $-20^{\circ}\text{C}$  to  $70^{\circ}\text{C}$

#### Materials

FRAME: SPCC  
 KNOB: POM (UL 94HB)  
 CONTACT: Silver plated  
 SPRING: Steel  
 TERMINAL: Silver plated

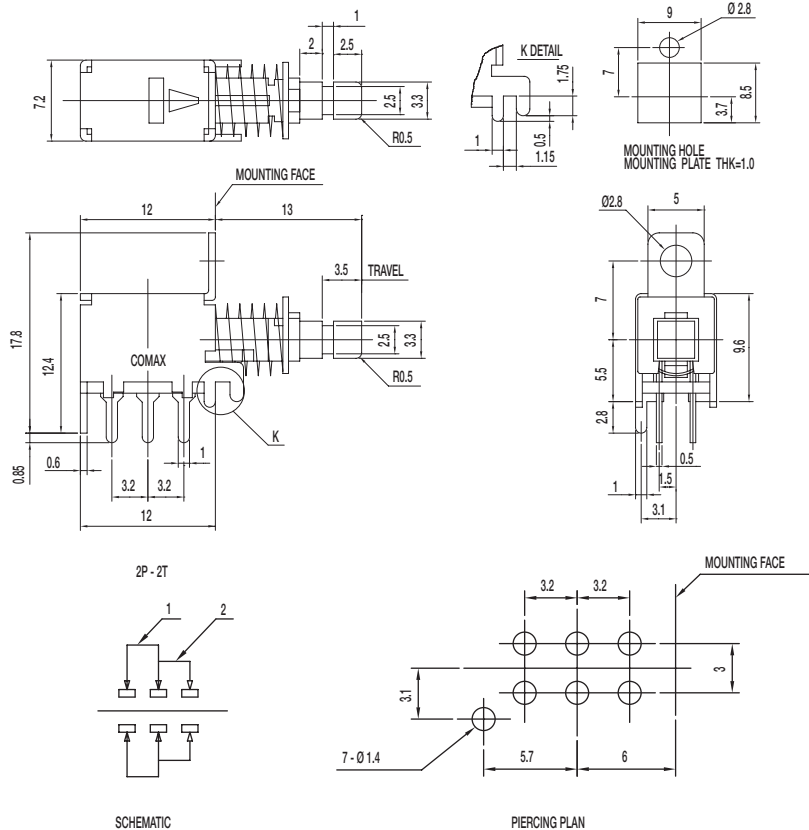


# PS Series Miniature Pushbutton Switches

A

Pushbutton

## PS-22F24-G13 NS DPDT NON\_SHORTING



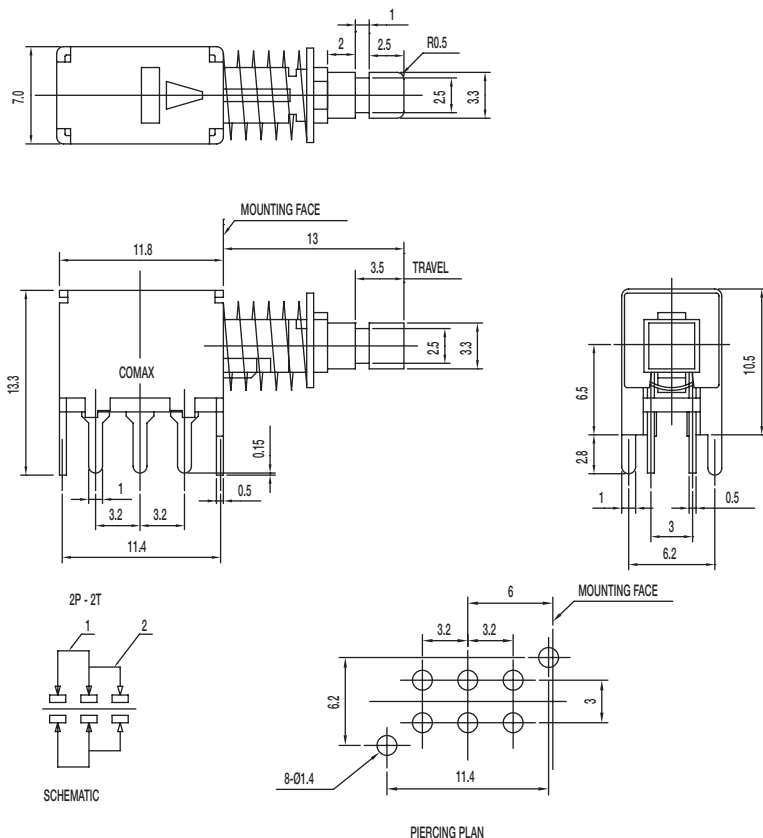
### Specifications

CONTACT RATING: 0.3A @ 30 VDC  
 INITIAL CONTACT RESISTANCE: 30 m ohms max.  
 INSULATION RESISTANCE: 100 M ohms min.  
 DIELECTRIC STRENGTH: 500 V AC (50-60 Hz) between open terminals and between the frame and terminal.  
 OPERATING LIFE: 10,000 cycles with load  
 OPERATING FORCE:  $300 \pm 100$  gf ( $2.94 \pm 0.98$ N)  
 TOTAL TRAVEL:  $3.5 \pm 0.3$  mm  
 OPERATING TEMPERATURE: -20°C to 70°C

### Materials

FRAME: SPCC  
 KNOB: POM (UL 94HB)  
 CONTACT: Silver plated  
 SPRING: Steel  
 TERMINAL: Silver plated

## PS-22F44-G13 NS DPDT NON\_SHORTING



### Specifications

CONTACT RATING: 0.3A @ 30 VDC  
 INITIAL CONTACT RESISTANCE: 30 m ohms max.  
 INSULATION RESISTANCE: 100 M ohms min.  
 DIELECTRIC STRENGTH: 500 V AC (50-60 Hz) between open terminals and between the frame and terminal.  
 OPERATING LIFE: 10,000 cycles with load  
 OPERATING FORCE:  $300 \pm 100$  gf ( $2.94 \pm 0.98$ N)  
 TOTAL TRAVEL:  $3.5 \pm 0.3$  mm  
 OPERATING TEMPERATURE: -20°C to 70°C

### Materials

FRAME: SPCC  
 KNOB: POM (UL 94HB)  
 CONTACT: Silver plated  
 SPRING: Steel  
 TERMINAL: Silver plated



# Mouser Electronics

Authorized Distributor

Click to View Pricing, Inventory, Delivery & Lifecycle Information:

## C&K Switches:

[PS-12G01](#) [PS-2206-L NS](#) [PS-2214-L NS PA](#) [PS-12C02-F NS](#) [PS-32C02-F NS](#)