

5 Tumbler Miniature Snap-in Switchlocks



Specifications

INDEXING: 90°:2 positions.

- **International agency listings**
- **Snap-in mounting**
- **Wire lead terminations available**
- **5 Tumbler lock with positive detent**

- **Computers**
- **Point-of-sale terminals**
- **Marine equipment**

LOCK: 6/6 nylon with matte finish (UL 94V-2), color black,
5 tumbler, single bitted lock with integral detent mechanism.

KEYS: Two nickel plated brass keys with black plastic head, other
colors available.

SWITCH HOUSING: 6/6 nylon (UL 94V-2).

CONTACTS & TERMINALS: Q contact material: Copper, silver
plated. See page L-28 for additional contact materials.

NOTE: Specifications and materials listed above are for switchlocks with standard options. For information on specific and custom switchlocks, consult Customer Service Center.

To order, simply select desired option from each category and place in the appropriate box. Available options are shown and described on pages L-27 and L-28. For additional options not shown in catalog, consult Customer Service Center.



PM0613 SP, 90°, Index, keypull pos. 1

PM061U SP, 90° Index, keypull pos. 1 & 3

Keying

E Two nickel plated brass keys with insert molded plastic head

Lock Type

B 5 Tumbler lock
with detent

Lock Finish

M Plastic lock with matte finish

Terminations

05 Quick connect
WC Wire lead

Lock Style

K Cone shaped facing

Contact Material

Q Silver
B Gold

Lock Color

2 Black

Key Color

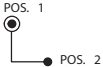

2 Black



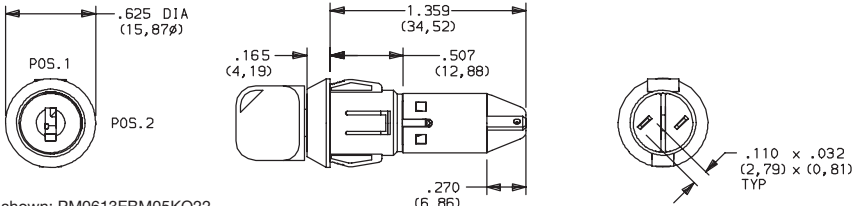
PM Series 5 Tumbler Miniature Snap-in Switchlocks

SWITCH AND LOCK FUNCTION



| NO. POLES | MODEL NO. | SWITCH FUNCTION | | KEY PULL POSITIONS | LOCK CONFIGURATION | INDEXING |
|-----------|-----------|-----------------|--------|--------------------|---|----------|
| | | POS. 1 | POS. 2 | | | |
| SP | PM0613 | OFF | ON | Position 1 |  | 90° |
| | PM061U | | | Positions 1 & 2 |  | |

SP



Part number shown: PM0613EBM05KQ22

All models **CALUS** with all options when ordered with 'Q' contact material.

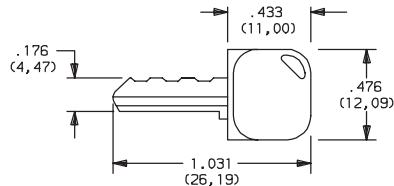
LEGEND

- = Detent Position (90°)
- ⊙ = Key pull possible in these positions.
- ⊙ = Stop Positions

KEYING



E TWO NICKEL PLATED BRASS KEYS WITH INSERT MOLDED PLASTIC HEAD

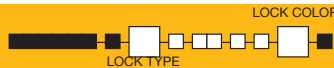


Key part number: 617D1004102

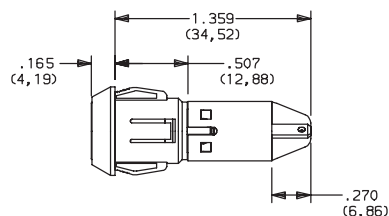
| OPTION CODE | KEY COLOR |
|-------------|-----------|
| 2 | BLACK |

NOTE: Molded plastic head color is black, standard. For more than one key code, replacement keys, or other special features, consult Customer Service Center.

LOCK TYPE



B 5 TUMBLER LOCK WITH DETENT



| OPTION CODE | LOCK COLOR |
|-------------|------------|
| 2 | BLACK |

PM Series

5 Tumbler Miniature Snap-in Switchlocks

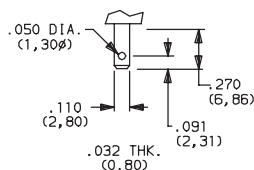
LOCK FINISH

M PLASTIC LOCK WITH MATTE FINISH

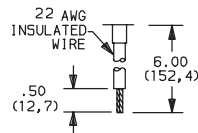


TERMINATIONS

05 QUICK CONNECT



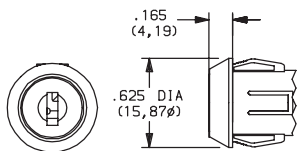
WC WIRE LEAD



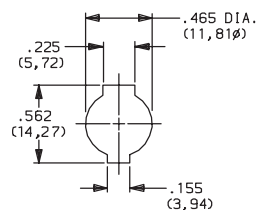
UL style 1015.
Black wire standard, other colors and lengths available,
consult Customer Service Center.

LOCK STYLE

K CONE SHAPED FACING



PANEL MOUNTING




Panel thickness:
.050-.080 (1,27-2,03)

CONTACT MATERIAL

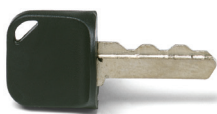
| OPTION CODE | RoHS COMPLIANT* | RoHS COMPATIBLE* | CONTACT AND TERMINAL MATERIAL | RATING | |
|-------------|-----------------|------------------|-------------------------------|-----------------------|--|
| Q | YES | YES | SILVER ² | POWER | 4 AMPS @ 125 V AC or 28 V DC; 2 AMPS @ 250 V AC (UL/CSA). 4 AMPS @ 125 V AC; or 2 AMPS @ 250 V AC; T65 (VDE). |
| B | YES | YES | GOLD ¹ | LOW LEVEL/DRY CIRCUIT | 0.4 VA MAX. @ 20 V AC or DC MAX. |

* Note: See Technical Data section of this catalog for RoHS compliant and compatible definitions and specifications.

¹ CONTACTS & TERMINALS: Copper, with gold plate over nickel plate.
² CONTACTS & TERMINALS: Copper, silver plated (standard with all termination options).

All models  with all options when ordered with 'Q' contact material.

AVAILABLE HARDWARE



Key Code: 041

PART NO. (ONE KEY)

617D1004102 BLACK

Material: Brass
Finish: Nickel plate
6/6 Nylon insert molded head



Dimensions are shown: Inch (mm)
Specifications and dimensions subject to change

C&K



L

Switchlock

Mouser Electronics

Authorized Distributor

Click to View Pricing, Inventory, Delivery & Lifecycle Information:

C&K Switches:

[PM0613EBM05KQ22](#) [PM0613EBMWCKQ22](#) [PM061UEBM05KQ22](#) [PM0613EBMWCKB22](#) [PM061UEBM05KB22](#)
[PM061UEBMWCKB22](#) [PM061UEBMWCKQ22](#) [PM061UEBMWCKQTT](#)