

# H Series Power ROTA-SLIDE® Rotary Switches

## Features/Benefits

- Multi-pole and multi-position
- Positive detent
- Power switching up to 12 AMPS
- Value added capability
- RoHS Compliant

## Typical Applications

- Small appliances
- Industrial equipment
- Elevators



Models Available

## Specifications

CONTACT RATING: 12 Amps @ 125 V AC; 6 AMPS @ 250 V AC;  
1 AMP @ 125 V DC (UL/CSA).

ELECTRICAL LIFE: 10,000 make-and-break cycles at full load.

INSULATION RESISTANCE:  $10^9 \Omega$  min.

DIELECTRIC STRENGTH: 1,000 Vrms min. @ sea level.

INDEXING: 45°-one contact models, 8 positions max.; two contact models, 4 positions max.

OPERATING & STORAGE TEMPERATURE: -30°C to 95°C

## Materials

HOUSING & BUSHING: 6/6 nylon (UL 94V-2).

ACTUATOR: 6/6 nylon (UL 94V-2).

CONTACTS & TERMINALS: Copper, silver plated.

CONTACT SPRING: Music wire or stainless steel.

MOUNTING NUT: Steel, zinc plated.

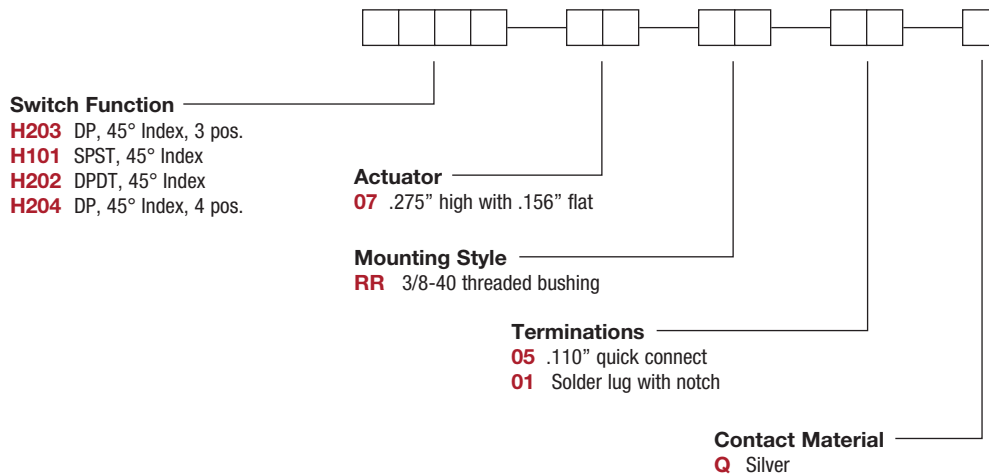
TERMINAL SEAL: Epoxy.

**NOTE:** Any models supplied with Q, B or G contact material are RoHS compliant.

**NOTE:** Specifications and materials listed above are for switches with standard options. For information on specific and custom switches, consult Customer Service Center.

## Build-A-Switch

To order, simply select desired option from each category and place in the appropriate box. Available options are shown and described on pages K-26 thru K-27. For additional options not shown in catalog, consult Customer Service Center.



K

Rotary

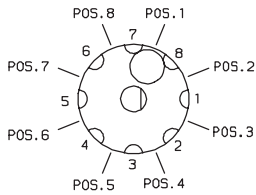
# H Series Power ROTA-SLIDE® Rotary Switches

## SWITCH FUNCTION

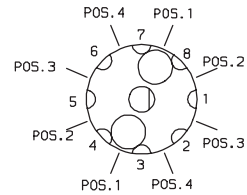
SP MODELS 45° INDEXING			
NO. POLES	MODEL NO.	SWITCH FUNCTION	TERMINALS
SP	<b>H101</b>	SPST	8-1

DP MODELS 45° INDEXING			
NO. POLES	MODEL NO.	SWITCH FUNCTION	TERMINALS
DP	<b>H202</b>	DPDT	7-8-1, 3-4-5
	<b>H203</b>	3 Position	All Terminals
	<b>H204</b>	4 Position	All Terminals

SP MODELS 45° INDEXING SCHEMATIC



DP MODELS 45° INDEXING SCHEMATIC



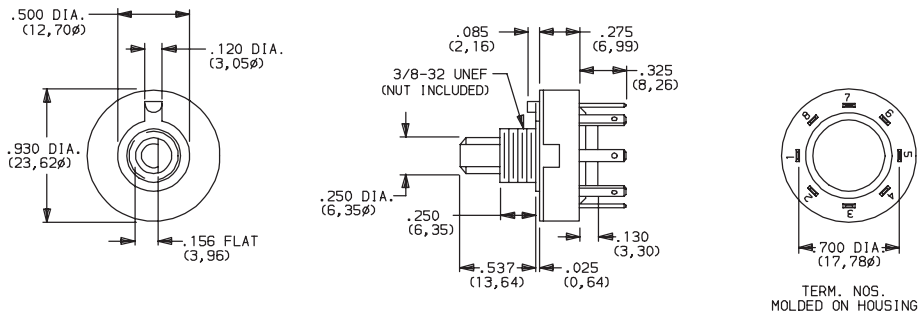
NOTE: Break-before-make contacts. Terminal numbers are molded on bottom of housing. Actuators and contacts are shown in position 1. No common terminal is present. Switching function is provided by movable contacts shorting adjacent pairs of stationary contacts.

All models with all options.



K

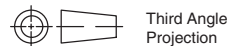
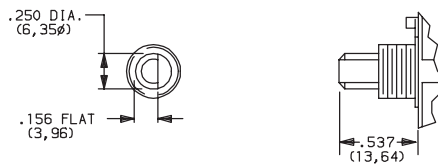
Rotary



Part number shown: H10107RR05Q

## ACTUATOR

**07** .275" HIGH WITH .156" FLAT



Third Angle Projection

Dimensions are shown: Inch (mm)  
Specifications and dimensions subject to change

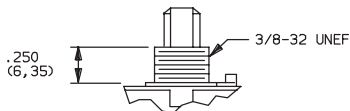


# H Series Power ROTA-SLIDE® Rotary Switches

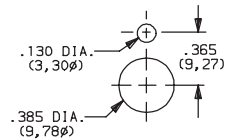
## MOUNTING STYLE



**RR** 3/8-32 THREADED BUSHING



### PANEL MOUNTING

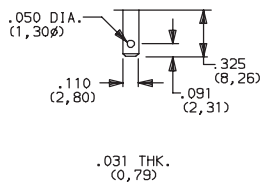


Mounting nut included (part number 925C00000).

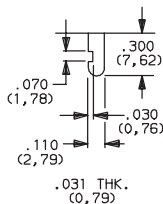
## TERMINATIONS



**05** SOLDER LUG WITH HOLE



**01** SOLDER LUG WITH NOTCH



Not available on models with 90° indexing.

## CONTACT MATERIAL



OPTION CODE	CONTACT AND TERMINAL MATERIAL	RATING	
		POWER	12 AMPS @ 125 V AC; 6 AMPS @ 250 V AC; 1 AMP @ 125 V DC.
Q	SILVER <sup>1</sup>		

\* Note: See Technical Data section of this catalog for RoHS compliant and compatible definition and specifications.

<sup>1</sup> CONTACTS & TERMINALS: Copper, silver plated.

**NOTE:** Any models supplied with Q contact material are RoHS compliant.

All models  with all options.



K

Rotary



Dimensions are shown: Inch (mm)  
Specifications and dimensions subject to change

# Mouser Electronics

Authorized Distributor

Click to View Pricing, Inventory, Delivery & Lifecycle Information:

## C&K Switches:

[H10107RR01Q](#) [H20207RR01Q](#) [H20407RR05Q](#) [H20307RR05Q](#) [H20207RR05Q](#) [H10107RR05Q](#) [H20407RR01Q](#)  
[H20307RR01Q](#)