

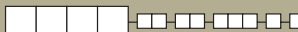









# E020 Series

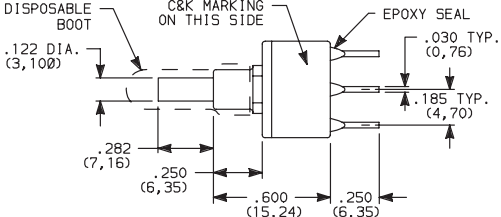
## Sealed Snap-acting Momentary Pushbutton Switches

### SWITCH FUNCTION



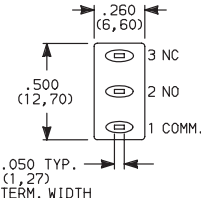
NO. POLES	MODEL NO.	SWITCH FUNCTION		CONNECTED TERMINALS		SCHEMATIC
		POS. 1	POS. 2	POS. 1	POS. 2	
						
		C&K marking this side		C&K marking this side		
SP	E121	ON	MOM.	1-3	1-2	
	E125	ON	MOM.			
SPDT						

**SPDT**

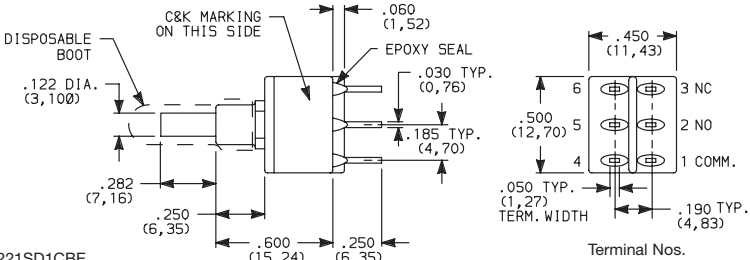


DISPOSABLE BOOT  
.122 DIA. (3, 100)  
.282 (7, 16)  
.250 (6, 35)  
.600 (15, 24)  
.250 (6, 35)  
C&K MARKING ON THIS SIDE  
EPOXY SEAL  
.030 TYP. (0, 76)  
.185 TYP. (4, 70)  
.260 (6, 60)  
.500 (12, 70)  
.050 TYP. (1, 27) TERM. WIDTH

Terminal Nos.  
For Reference Only

DP	E221	ON	MOM.	1-3,4-6	1-2,4-5	
	E225	ON	MOM.			
DPDT						

**DPDT**



DISPOSABLE BOOT  
.122 DIA. (3, 100)  
.282 (7, 16)  
.250 (6, 35)  
.600 (15, 24)  
.250 (6, 35)  
C&K MARKING ON THIS SIDE  
EPOXY SEAL  
.060 (1, 52)  
.030 TYP. (0, 76)  
.185 TYP. (4, 70)  
.450 (11, 43)  
.500 (12, 70)  
.050 TYP. (1, 27) TERM. WIDTH  
.190 TYP. (4, 83)

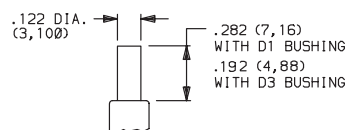
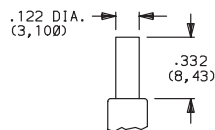
Terminal Nos.  
For Reference Only

MOM. = Momentary

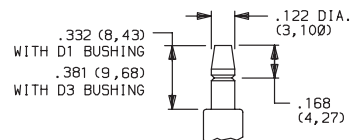
E121, E221 models with all options when ordered with G or R contact material.

EX25 models must be ordered with B or P contact material.  
EX21 models must be ordered with G or R contact material.

### PLUNGER

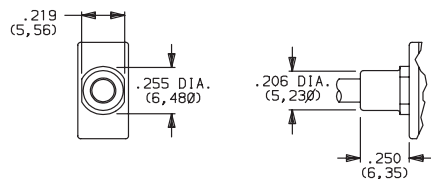
**S** .282" HIGH**S1** .332" HIGH

Not Available with D1 bushing.

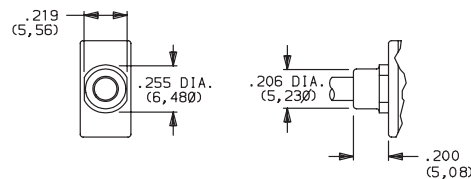
**M** .332" HIGH SNAP-FITTING

NOTE: Caps available for all plunger options, see page A-27.

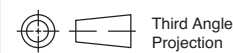
### BUSHING

**D1** UNTHREADED

Not available with S1 actuator.

**D3** .180" HIGH UNTHREADED

NOTE: Disposable splashproof vinyl over actuator and bushing supplied std., see page A-26.



Third Angle Projection

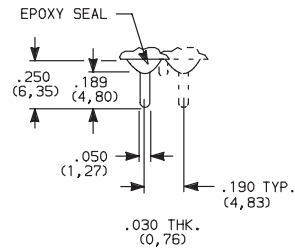
# E020 Series Sealed Snap-acting Momentary Pushbutton Switches



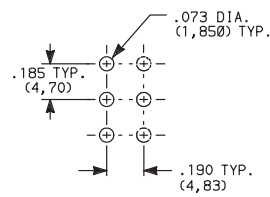
A  
Pushbutton

## TERMINATIONS

### C PC THRU-HOLE

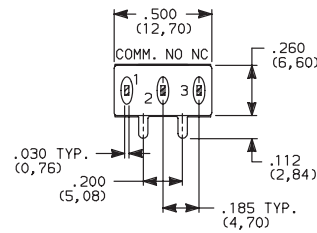
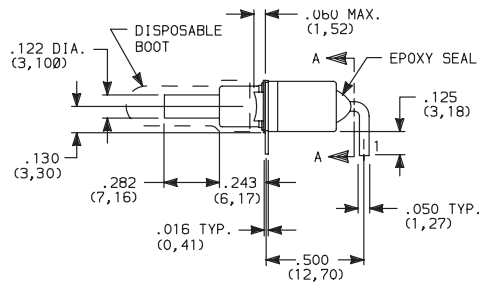
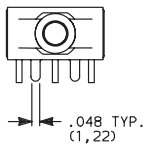


#### PC MOUNTING



### SPDT and DPDT

### A RIGHT ANGLE, PC THRU-HOLE

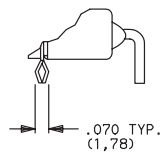
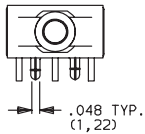


#### SECTION A-A

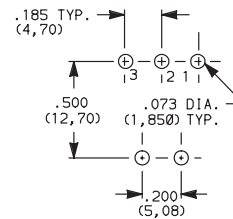


E121SD1AGE  
SPDT

### A3 RIGHT ANGLE, SNAP-IN, PC THRU-HOLE

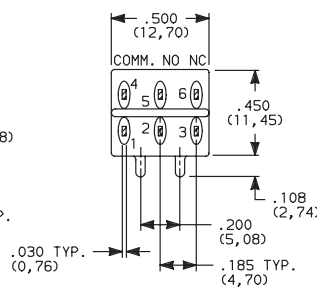
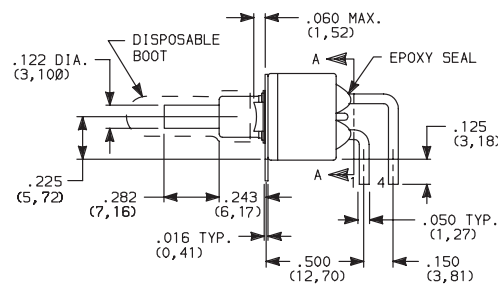
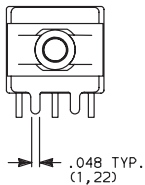


#### PC MOUNTING

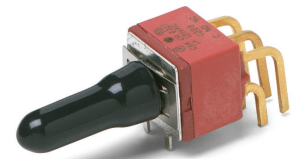


NOTE: Terminal bend radii and lead-in manufacturing option.

### A RIGHT ANGLE, PC THRU-HOLE

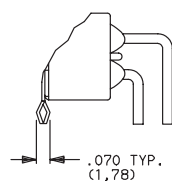
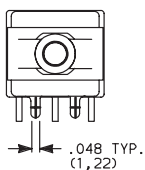


#### SECTION A-A

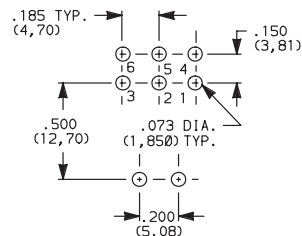


E221SD1AGE  
DPDT

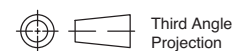
### A3 RIGHT ANGLE, SNAP-IN, PC THRU-HOLE



#### PC MOUNTING



NOTE: Terminal bend radii and lead-in manufacturing option.



**C&K**

5 Aug 20

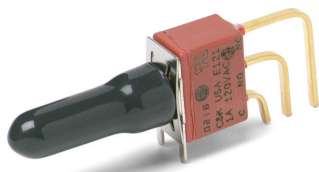


# E020 Series Sealed Snap-acting Momentary Pushbutton Switches

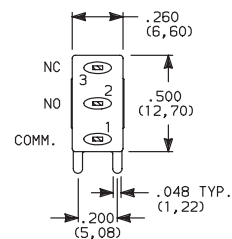
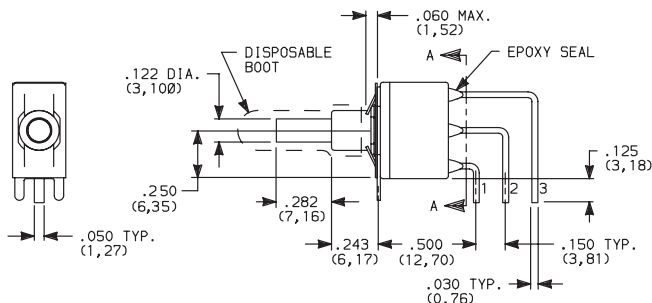
## TERMINATIONS



**AV2** VERTICAL RIGHT ANGLE, PC THRU-HOLE,  
.150" PITCH

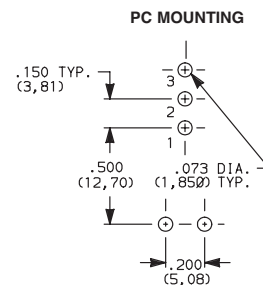
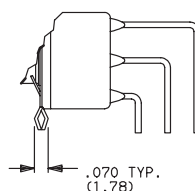
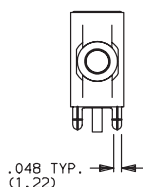


E121SD1AV2GE  
SPDT



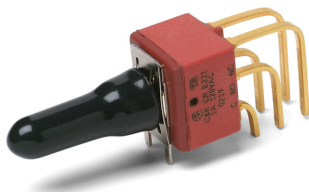
SECTION A-A

**AV3** VERTICAL RIGHT ANGLE, SNAP-IN, PC THRU-HOLE,  
.150" PITCH

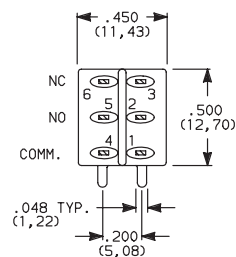
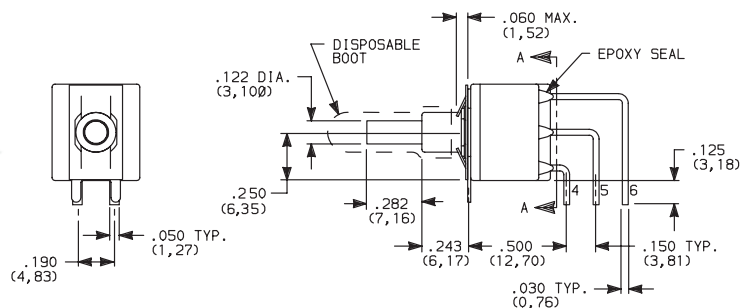


NOTE: Terminal bend radii and lead-in manufacturing option.

**AV2** VERTICAL RIGHT ANGLE, PC THRU-HOLE,  
.150" PITCH

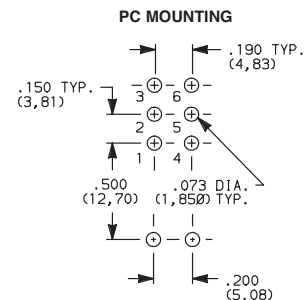
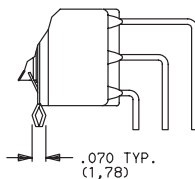
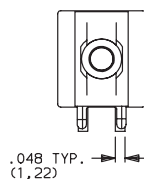


E221SD1AV2GE  
DPDT

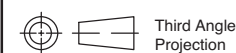


SECTION A-A

**AV3** VERTICAL RIGHT ANGLE, SNAP-IN, PC THRU-HOLE,  
.150" PITCH



NOTE: Terminal bend radii and lead-in manufacturing option.



Third Angle  
Projection

# E020 Series Sealed Snap-acting Momentary Pushbutton Switches

## TERMINATIONS

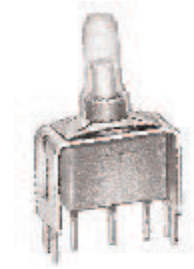
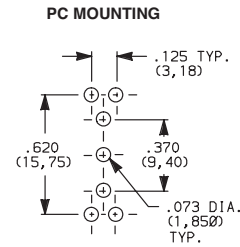
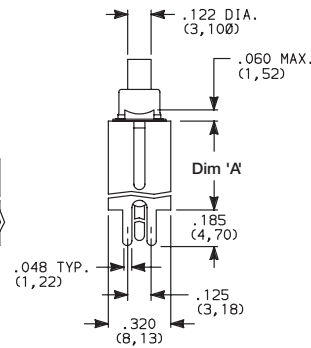
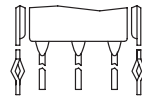
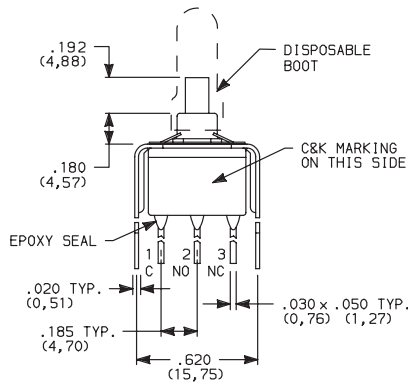


A

Pushbutton

**V3, V4** VERTICAL MOUNT, V-BRACKET

**V31, V41** VERTICAL MOUNT, V-BRACKET, SNAP-IN

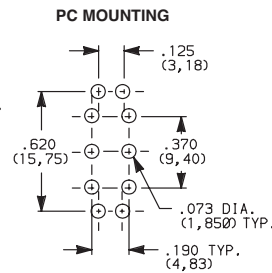
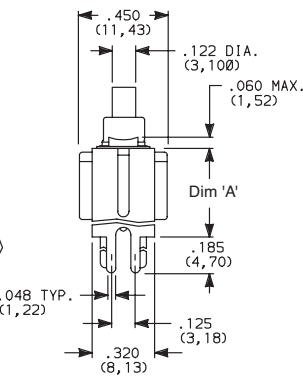
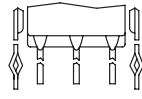
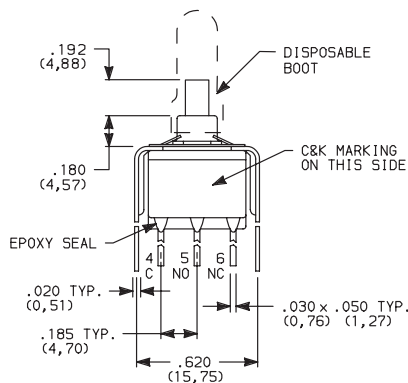


E121SD3\_GE  
SPDT

OPTION CODE	DIM 'A'
V3, V31	.460 (11,68)
V4, V41	.630 (16,00)

**V3, V4** VERTICAL MOUNT, V-BRACKET

**V31, V41** VERTICAL MOUNT, V-BRACKET, SNAP-IN

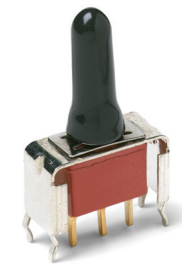
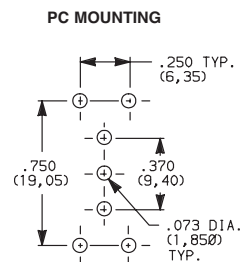
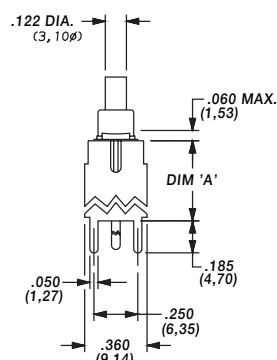
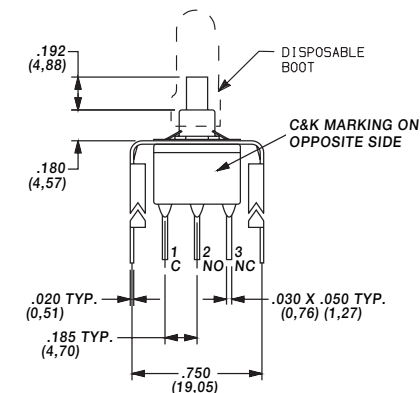


E221SD3\_GE  
DPDT

OPTION CODE	DIM 'A'
V3, V31	.460 (11,68)
V4, V41	.630 (16,00)

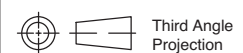
**V6, V8** VERTICAL MOUNT, V-BRACKET

**V61, V81** VERTICAL MOUNT, V-BRACKET, SNAP-IN



E121SD3\_GE  
SPDT

OPTION CODE	DIM 'A'
V6, V61	.460 (11,68)
V8, V81	.953 (24,21)



**C&K**

5 Aug 20

Dimensions are shown: Inches (mm)  
Specifications and dimensions subject to change



# E020 Series Sealed Snap-acting Momentary Pushbutton Switches

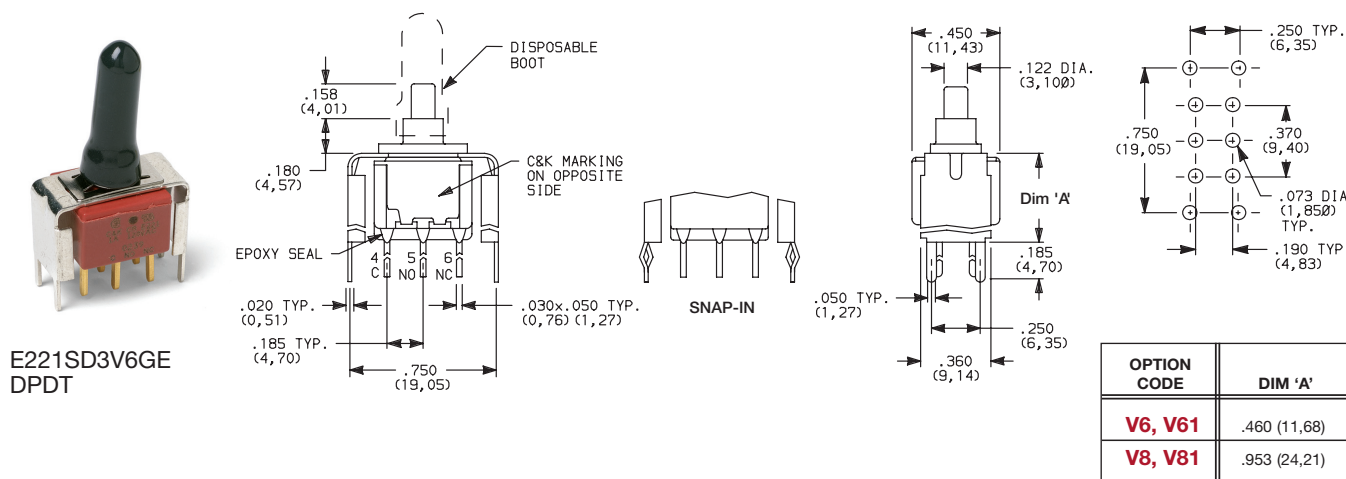
## TERMINATIONS



**V6, V8** VERTICAL MOUNT, V-BRACKET

**V61, V81** VERTICAL MOUNT, V-BRACKET, SNAP-IN

## PC MOUNTING



## CONTACT MATERIAL



OPTION CODE	CONTACT MATERIAL	TERMINAL PLATING	RATINGS	
<b>B</b>	GOLD <sup>1</sup>	GOLD <sup>1</sup>	LOW LEVEL/DRY CIRCUIT	EX25 MODELS ONLY: 0.4 VA MAX. @ 20 V AC OR DC MAX.
<b>P</b>		MATTE-TIN <sup>4</sup>		
<b>G</b>	GOLD OVER SILVER <sup>2,3</sup>	GOLD <sup>3</sup>	LOW LEVEL/DRY CIRCUIT OR POWER	EX21 MODELS ONLY: 0.4 VA MAX @ 20 V AC OR DC MAX. OR 1 AMP @ 120 V AC OR 28 V DC.
<b>R</b>		MATTE-TIN <sup>4</sup>		

\* Note: See Technical Data section of this catalog for RoHS compliant and compatible definitions and specifications.


<sup>1</sup> CONTACTS & TERMINALS: Copper alloy, with gold plate over nickel plate.

<sup>2</sup> N.O. AND N.C. CONTACTS: Coin silver, with gold plate over nickel plate.

<sup>3</sup> COMMON CONTACTS & ALL TERMINALS: Copper alloy, with gold plate over nickel plate.

<sup>4</sup> TERMINALS: Copper alloy, with matte-tin alloy over nickel plate.

NOTE: Any models supplied with P, R, B or G contact material are RoHS compliant.

E121, E221 models  with all options when ordered with mandatory G, or R contact material.

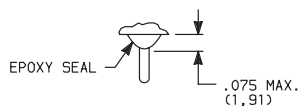
P or B contact material must be ordered with EX25 models.

R or G contact material must be ordered with EX21 models.

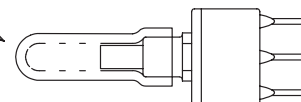
## SEAL



**E** EPOXY SEAL AND DISPOSABLE SPLASHPROOF BOOT



Disposable splashproof boot supplied standard. Remove and discard boot *only after* soldering and cleaning processes are complete.



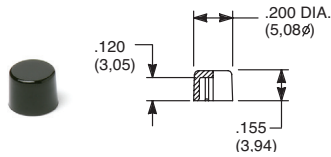
# E020 Series Sealed Snap-acting Momentary Pushbutton Switches



A  
Pushbutton

## AVAILABLE HARDWARE

Cap

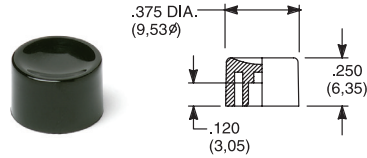


**PART NO.**

**708901000** WHITE  
**708902000** BLACK  
**708903000** RED

Material: Nylon  
Finish: Gloss

Cap

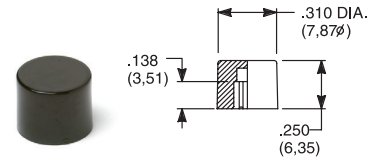


**PART NO.**

**752701000** WHITE  
**752702000** BLACK  
**752703000** RED

Material: Nylon  
Finish: Gloss

Cap

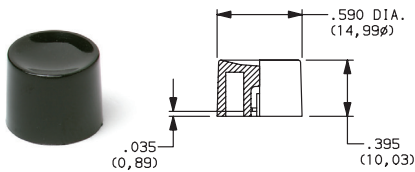


**PART NO.**

**801801000** WHITE  
**801802000** BLACK  
**801803000** RED

Material: Nylon  
Finish: Gloss

Cap, Snap-fitting plunger

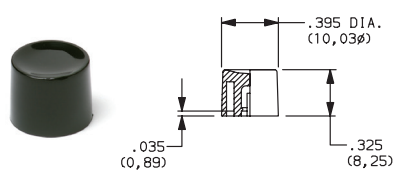


**PART NO.**

**452D01000** WHITE  
**452D02000** BLACK  
**452D03000** RED

Material: Nylon  
Finish: Gloss

Cap, Snap-fitting plunger

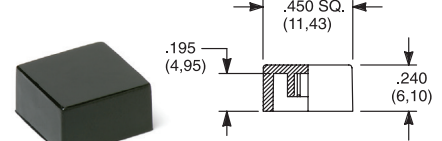


**PART NO.**

**894101000** WHITE  
**894102000** BLACK  
**894103000** RED

Material: Nylon  
Finish: Gloss

Cap



**PART NO.**

**484601000** WHITE  
**484602000** BLACK  
**484603000** RED

Material: Nylon  
Finish: Gloss

**PART NO.**

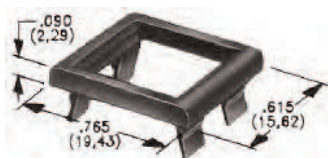
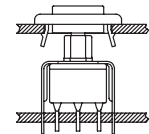
**798201000** WHITE  
**798202263** BLACK  
**798203000** RED

Material: Nylon  
Finish: Matte

NOTE: Other cap colors available, consult Customer Service Center.

Frames snap into panel opening and are independent from switch mounting. Accurate positioning of the PC mounted switch relative to the panel opening is necessary to provide proper clearance between actuator and frame. Available in two basic styles and four panel thicknesses .047-.125 in. Material: Nylon. Finish: Matte.

TYPICAL APPLICATION



.090" (2,29) PANEL THK. .125" (3,18) PANEL THK.

**PART NO.**

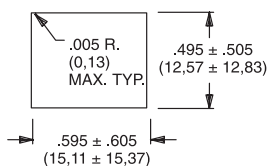
**432702263**

**PART NO.**

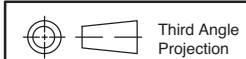
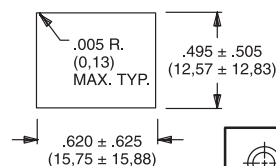
**432802263** BLACK

PANEL MOUNTING

For part numbers  
4325xxxxx, 4326xxxxx



For part numbers  
4327xxxxx, 4328xxxxx



**C&K**

5 Aug 20

Dimensions are shown: Inches (mm)  
Specifications and dimensions subject to change

www.ckswitches.com



A

Pushbutton

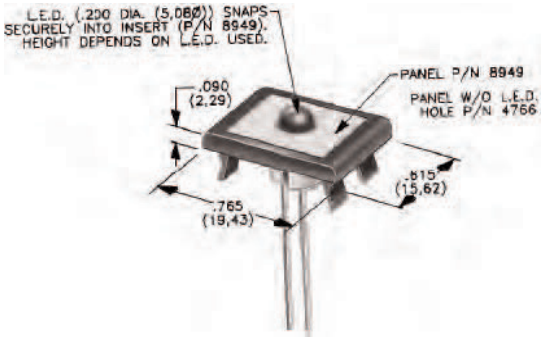
# E020 Series

## Sealed Snap-acting Momentary Pushbutton Switches

### AVAILABLE HARDWARE

#### PANEL INSERTS

Above frames (part nos. 432XXXXXX) are also available with insert which accepts LED for indicator light assembly. Order insert separately from frame. Blank insert panel (without hole for LED) also available. LED not included.



PANEL INSERT  
WITH HOLE FOR LED

PART NO.  
**894902000**

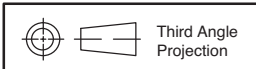
BLANK PANEL INSERT  
WITHOUT HOLE FOR LED

PART NO.  
**476602000** BLACK

Special colors, custom markings available, consult Customer Service Center.



5 Aug 20



Dimensions are shown: Inches (mm)  
Specifications and dimensions subject to change



# Mouser Electronics

Authorized Distributor

Click to View Pricing, Inventory, Delivery & Lifecycle Information:

## C&K Switches:

[E221SD1CGE](#) [E121SD1CGE](#) [E121SD1AV2GE](#) [E121SD1AGE](#) [E121SD1V3GE](#) [E125SD1AV2BE](#) [E125SD1ABE](#)  
[E125SD1V3BE](#) [E121MD1AV3GE](#) [E121SD1AV3GE](#) [E125SD1CBE](#) [E125SD1V6BE](#) [E221SD1AV2GE](#) [E225SD1CBE](#)  
[E221SD1AGE](#) [E121SD3V3GE](#) [E125SD1A3BE](#) [E121SD3V6GE](#) [E121SD3V31GE](#) [E121SD1A3LE](#) [E121SD1A3RE](#)  
[E221SD1V4LE](#) [E121SD1V61GE](#) [E125SD1V31BE](#) [E125SD3V3BE](#) [E121SD3V61GE](#) [E125SD1AKE](#) [E225MD1V3BE](#)  
[E121SD1AV3LE](#) [E121MD1AV2GE](#) [E125SD3V3KE](#) [E225SD1V3BE](#) [E221SD1AV3LE](#) [E225SD1ABE](#) [E221SD1CLE](#)  
[E121S1D3AV3GE](#) [E121SD3V4GE](#) [E221SD3V6GE](#) [E121SD1A3GE](#) [E125SD1AV3BE](#) [E121SD1V3LE](#) [E225SD3CBE](#)  
[E121SD1V6GE](#) [E125S1D3A3BE](#) [E125SD3V3PE](#) [E125SD1V8KE](#) [E125MD1CBE](#)