



Features/Benefits

- **Designed for mirror control**
- **Wire harness and connector easy to customize**
- **4-way adjustable directions**
- **Automotive**
- **Industrial**



Typical Applications

Specifications

CONTACT RATING: 0.2 A @ 12 VDC

OPERATING LIFE: 10,000 cycles

INSULATION RESISTANCE: 10 M Ω min. @ 500 VDC

DIELECTRIC STRENGTH: 500 V AC

OPERATING TEMPERATURE: -40°C to +90°C

OPERATING FORCE: L- OFF, R-OFF; 200 ±100 gf

OFF-L, OFF-R; 400 ± 200 gf

4 Direction; 500 ± 200 gf

Materials

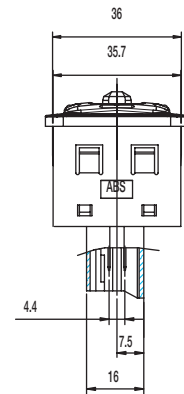
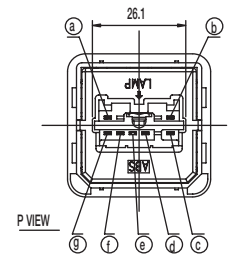
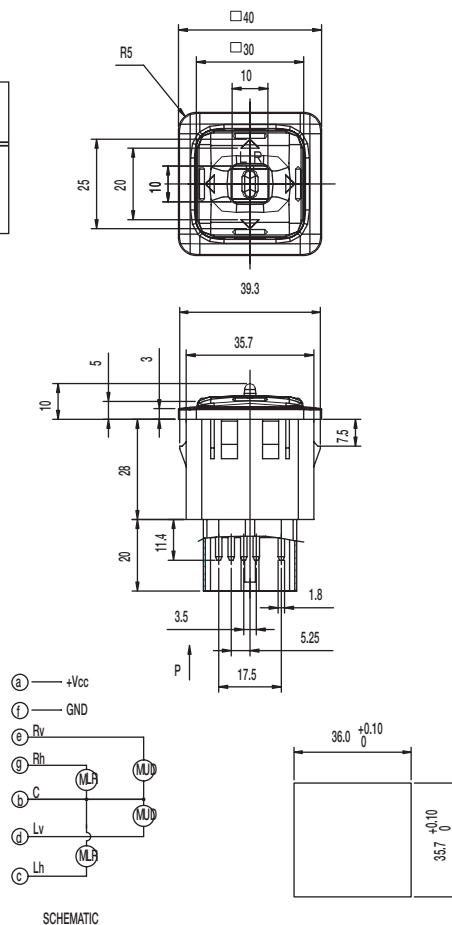
KNOB: ABS

COVER: ABS

TERMINAL: Brass, tin plated

NOTE: Specifications and materials listed above are for switches with standard options. For information on specific and custom switches, consult Customer Service Center.

PART NUMBER	PACKAGING
CS-41001-E	256 pieces



Mouser Electronics

Authorized Distributor

Click to View Pricing, Inventory, Delivery & Lifecycle Information:

[C&K Switches:](#)

[CS41001E](#)