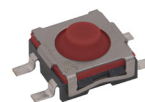


## Features/Benefits

- **6.0 x 6.1 mm dimension**
- **Height 3.45 mm**
- **Soft actuator**
- **Long life - 3M cycles**
- **IP54**

## Typical Applications

- **Elevator button & alarm**
- **Robotic vaccum**
- **Door handle**
- **Mower**



## Specification

FUNCTION: Momentary action  
CONTACT ARRANGEMENT: SPDT, NC  
TERMINALS: SMT termination  
TRAVEL: 0.3 ± 0.2 mm

## Mechanical

OPERATING LIFE: 3,000,000 cycles

## Electrical

VOLTAGE: DC 1V to 16V  
CURRENT: 10μA to 50mA  
CONTACT RESISTANCE: 200mΩ max.  
500mΩ max. after testing  
INSULATION RESISTANCE: 100 MΩ min.  
DIELECTRIC VOLTAGE: AC 250V

## Environmental

OPERATING TEMPERATURE: -40°C to 90°C  
STORAGE TEMPERATURE: -40°C to 90°C

## Process

**SOLDERING:** This component is suited to the following methods: Infrared Reflow Soldering in accordance with IEC61760-1

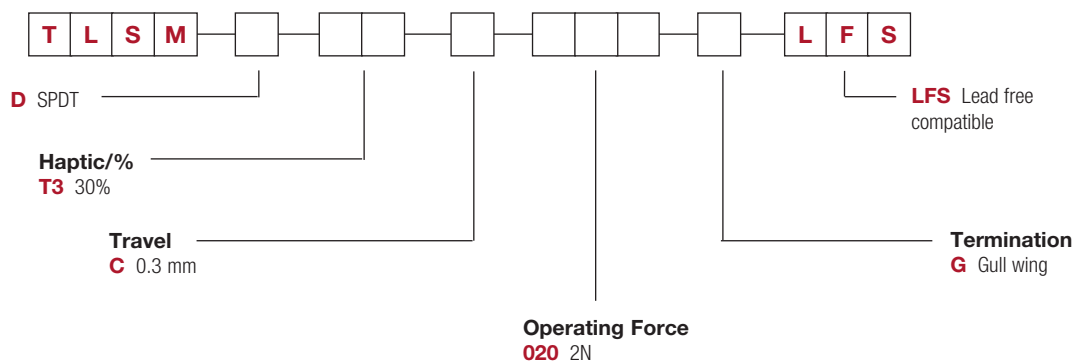
## Packaging

1100 pieces per reel

## How To Order

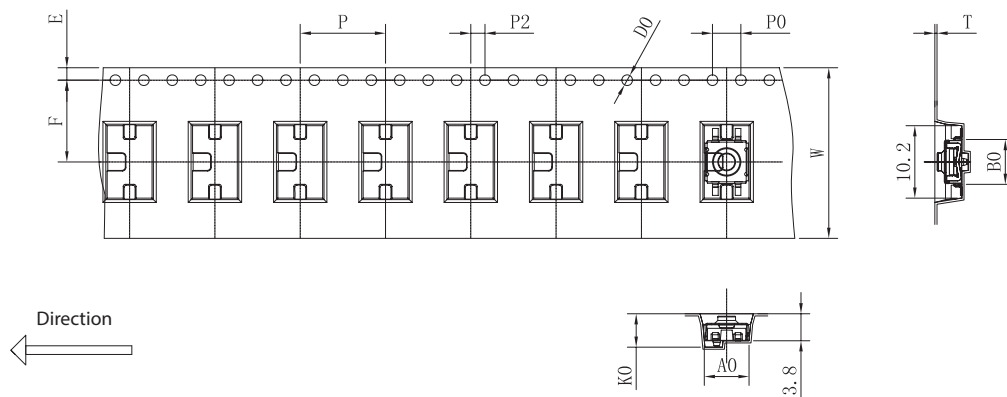
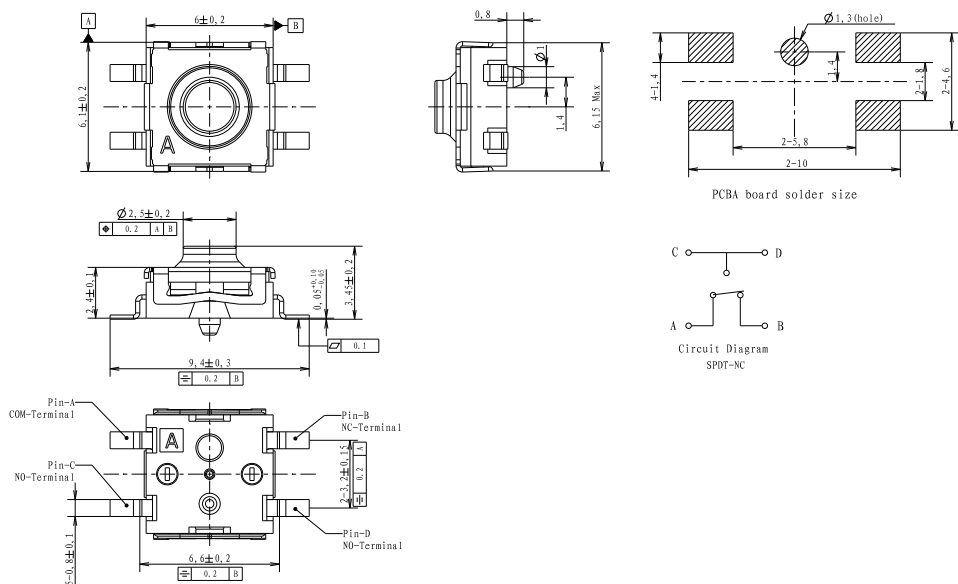
Our easy build-a-switch concept allows you to mix and match options to create the switch you need. To order, select desired option from each category and place it in the appropriate box.

**For any part number different from those listed above, please consult your local representative.**



# TLSM Series 6 mm Compact Top Mount Endurance SMT Tact Switch

**NEW**



Dimensions are shown: mm  
Specifications and dimensions subject to change

# Mouser Electronics

Authorized Distributor

Click to View Pricing, Inventory, Delivery & Lifecycle Information:

[C&K Switches:](#)

[TLSMDT3C020GLFS](#)