

RKC2 Series Microminiature SMT Top Actuated Tact Switch

NEW

Features/Benefits

- 1.7 mm height, 3.5 x 2.7 mm size
- SMT termination
- Hard actuator
- 180, 250, 350 & 500 gf actuation forces
- 100k to 200k cycles

Typical Applications

- Automotive keyfob
- High-end consumer
- Health & medical devices

Specifications

FUNCTION: momentary action

CONTACT ARRANGEMENT: 1 make contact = SPST N.O.

TERMINALS: SMT termination

TRAVEL: 0.15 ± 0.1 mm

Mechanical

Product Description	Life Cycles
RKC2SJM170SMTR LFS	200,000
RKC2SJK170SMTR LFS	200,000
RKC2SJR170SMTR LFS	200,000
RKC2SJF170SMTR LFS	100,000

Electrical

MAXIMUM VOLTAGE: 12 VDC

MAXIMUM CURRENT DC: 20 mA

CONTACT RESISTANCE: 100 mΩ

INSULATION RESISTANCE: 100 MΩ min.

DIELECTRIC STRENGTH: 250 VA C (1 minute)

BOUNCE TIME: ≤ 10 ms

Environmental

OPERATING TEMPERATURE: -40°C to 85°C

Process

SOLDERING: This component is suited to the following methods:

Infrared Reflow Soldering in accordance with IEC61760-1

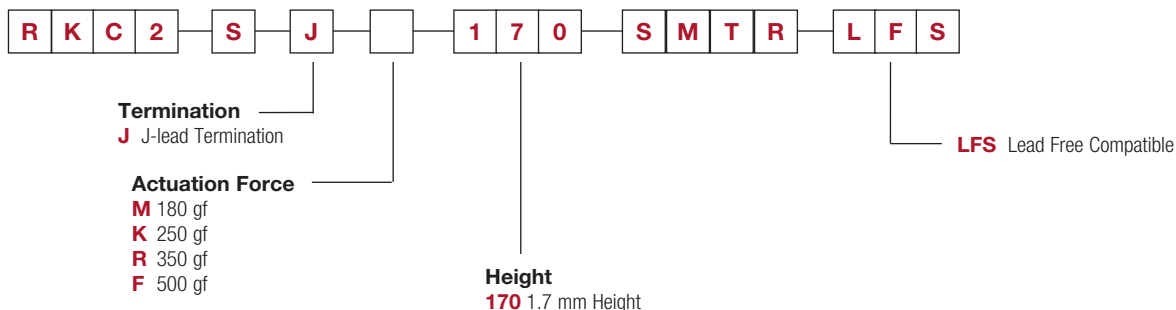
Packaging

4,000 pieces per reel

How To Order

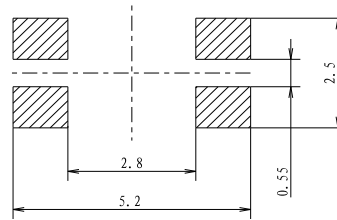
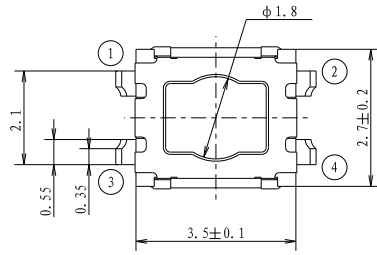
Our easy build-a-switch concept allows you to mix and match options to create the switch you need. To order, select desired option from each category and place it in the appropriate box.

For any part number different from those listed below, please consult your local representative.

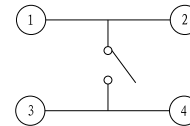
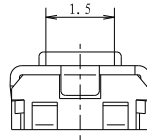
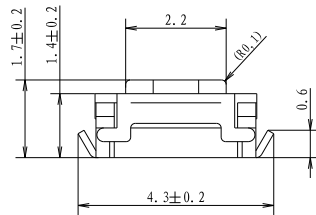


RKC2 Series Microminiature SMT Top Actuated Tact Switch

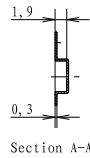
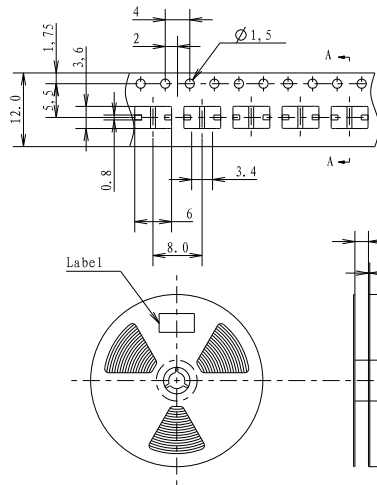
NEW



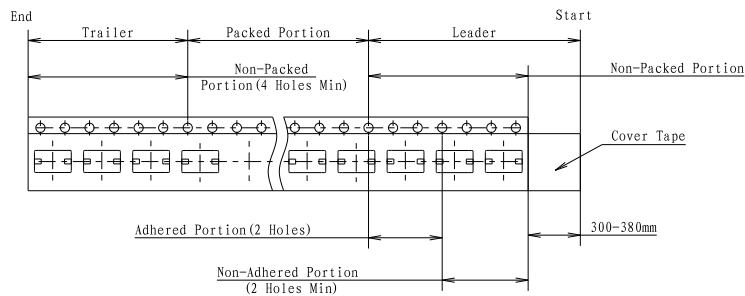
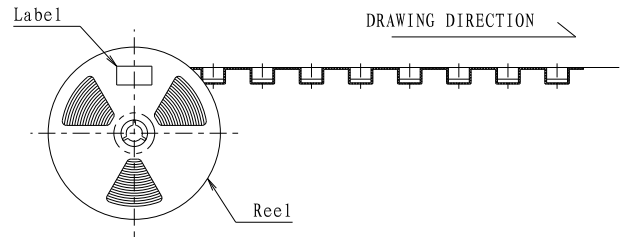
P. C. B LAND DIMENSION



CIRCUIT DIAGRAM



Section A-A



NOTE

1. 4K pcs SWITCHES PER 1 REEL
2. GENERAL TOLERANCE : 0.3mm

Mouser Electronics

Authorized Distributor

Click to View Pricing, Inventory, Delivery & Lifecycle Information:

C&K Switches:

[RKC2SJF170SMTR LFS](#)