

ATS Series

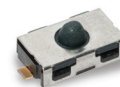
Anti-Tampering Detect Switches

Features/Benefits

- Normally closed function
- Vertical detect
- Reliable long time compression
- IP54
- Tape & reel
- RoHS compliant and compatible

Typical Applications

- Smart meters
- Alarm systems
- Anti-tamper devices



Specifications

FUNCTION: Momentary action.

CONTACT TYPE: SPST Normally Closed.

TERMINALS: Gullwing type for SMT.

Mechanical

SWITCHING FORCE: ≤ 2 N

TRAVEL TO BREAK: 0,7 mm

TOTAL TRAVEL: 1,1 mm

Packaging

Switches are delivered on continuous tape, in reels of 2,000 pieces

Electrical

MAXIMUM POWER:

GOLD

0.2 VA

MAXIMUM VOLTAGE:

32 VDC

MINIMUM VOLTAGE:

20 mVDC

MAXIMUM CURRENT:

10 mA

MINIMUM CURRENT:

1 μ A

CONTACT RESISTANCE:

≤ 350 m Ω

INSULATION RESISTANCE:

> 1 G Ω

DIELECTRIC STRENGTH:

≥ 250 Vrms

SILVER

1 VA

32 VDC

20 mVDC

50 mA

1 mA

Environmental

GOLD

OPERATING TEMPERATURE: -40°C to $+125^{\circ}\text{C}$

SILVER

-40°C to $+85^{\circ}\text{C}$

STORAGE TEMPERATURE: -55°C to $+125^{\circ}\text{C}$

-40°C to $+85^{\circ}\text{C}$

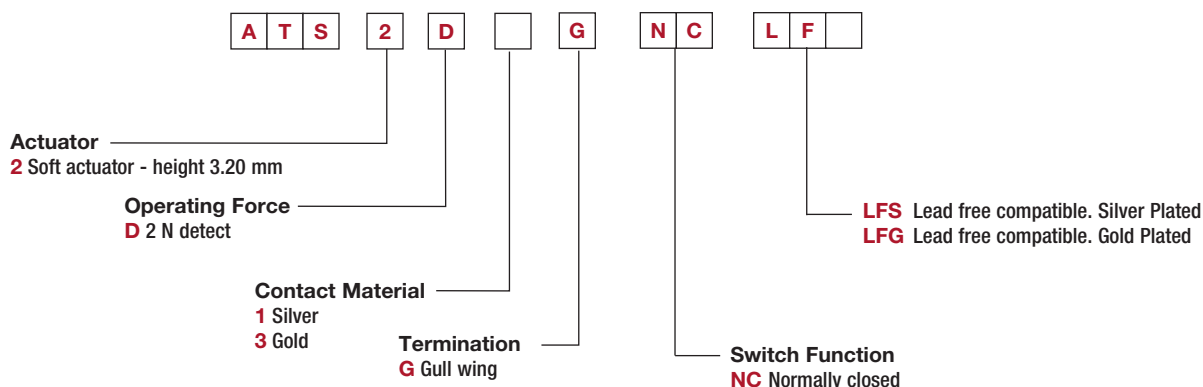
Process

SOLDERING: Compatible with lead free reflow process

NOTE: Specifications listed above are for switches with standard options.
For information on specific and custom switches, consult Customer Service Center.

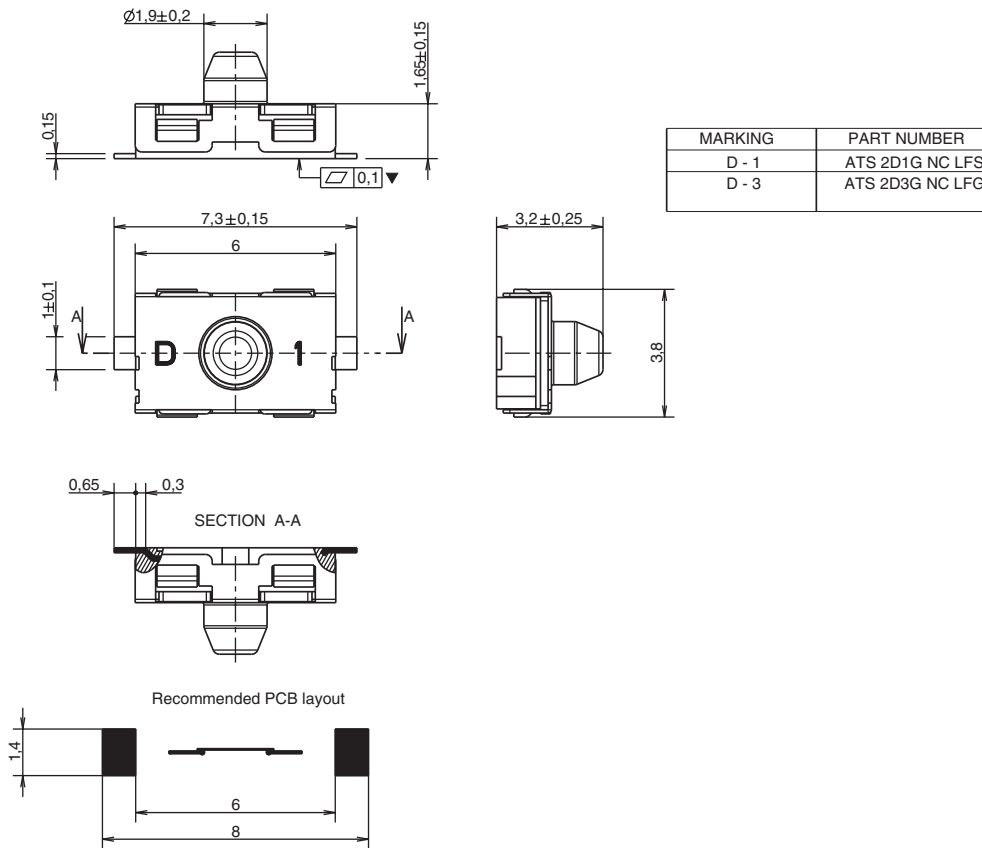
Build-A-Switch

To order, simply select desired option from each category and place in the appropriate box. Available options are shown and described on the next page. For additional options not shown in catalog, consult Customer Service Center.

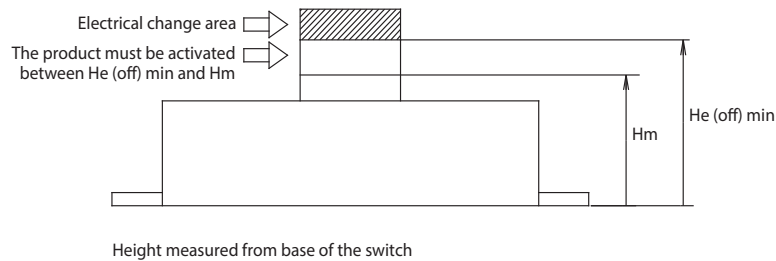


ATS Series Anti-Tampering Detect Switches

SERIES



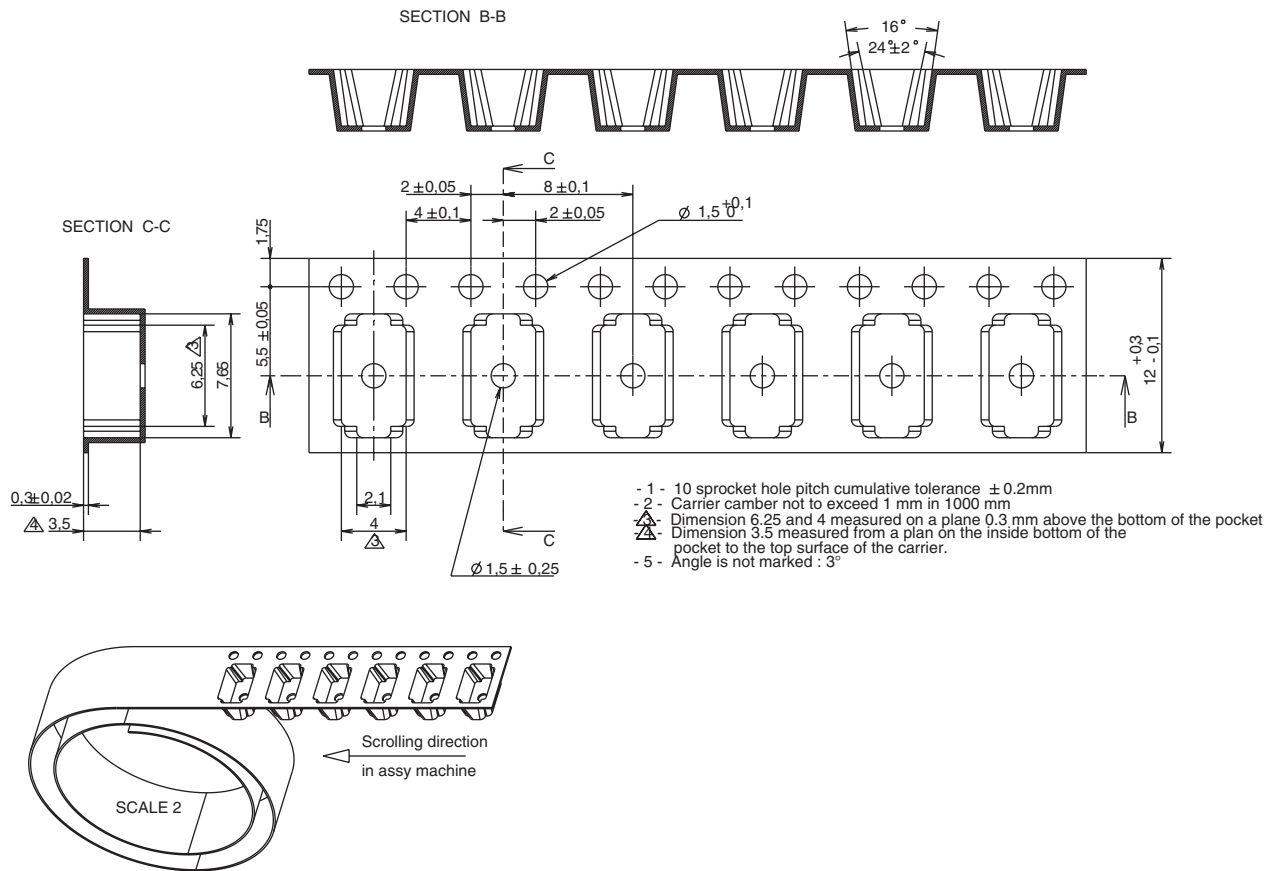
CHARACTERISTICS



| | | |
|--|--|--------|
| Minimum Activation Height (Hm) | Maximum force at Hm = 6N Switch damage can occur if product is actuated below minimum actuation height (Hm) | 2.1 mm |
| Minimum Electrical Height (He (OFF) min) | Product height for contact opening Contact closing: the switch must be completely release | 2.5 mm |

ATS Series Anti-Tampering Detect Switches

TAPE & REEL



E

Detect

Mouser Electronics

Authorized Distributor

Click to View Pricing, Inventory, Delivery & Lifecycle Information:

C&K Switches:

[ATS2D1G NC LFS](#) [ATS2D3G NC LFG](#)