



# ATP16 Series Anti-Vandal Sealed Pushbutton Switch

## Features/Benefits

- **Momentary or Lock version**
- **IP67 sealed**
- **Rated at 2A / 36 Vdc**
- **1,000,000 life cycle**
- **Various colors of LED illuminate indicator**
- **Choices of actuator with ring or power logo**
- **RoHS compliant**

## Typical Applications

- **Alarm, safety and security systems**
- **Intercom "push-to-talk" devices**
- **Automatic food and drink vending machines**
- **Parking lot ticket machines & ticket paying stations**
- **Industrial Instruments**



## Specifications

FUNCTION: SPST  
CONTACT ARRANGEMENT: N.O.  
MOUNTING TYPE: Threaded front panel mount  
TORQUE FOR THREADED BODY: 11.5 kgf/cm

## Mechanical

OPERATING LIFE: Momentary 1,000,000 cycles  
Lock 100,000 cycles  
TOTAL TRAVEL: Momentary 2.0 mm; Lock 2.3 mm  
OPERATING FORCE: 4.5 ± 1.5N

## Electrical

CONTACT RATING: 2A / 36Vdc  
OPERATING LIFE: Make-and-break cycles at full load  
200,000 (Momentary)  
100,000 (Lock)  
DIELECTRIC STRENGTH: 2,000 V RMS @ sea level  
INSULATION RESISTANCE: 1,000 MΩ min. @ 500 VDC  
INITIAL CONTACT RESISTANCE : 50 mΩ max @1A 12VDC

## Materials

BUSHING: Stainless steel / Aluminum alloy, anodized  
BASE: PBT (UL 94-A0), Nylon 6/6 (lock version)  
ACTUATOR: PC (UL 94-V2); POM (lock version)  
INTERNAL ASSEMBLY: POM / PA66  
SPRING: Steel  
SEALING / O-ring: Silicone (Translucent) / Silicone  
TERMINALS / CONTACT: Brass, Silver or gold plated  
HEX NUT: Brass (Nickel plated)

## Operating Environment

OPERATING TEMPERATURE: -20°C to +70°C  
SEALING / PROTECTION: IP67

**NOTE:** Specifications and materials listed above are for switches with standard options.  
For information on specific and custom switches, please contact Customer Service.

## Build-A-Switch

To order, simply select desired option from each category and place in the appropriate box.

<b>A</b>	<b>T</b>	<b>P</b>	<b>1</b>	<b>6</b>							<b>S</b>				<b>G</b>
----------	----------	----------	----------	----------	--	--	--	--	--	--	----------	--	--	--	----------

**Designation**  
**ATP16** Series

**Actuator Style**  
**D** Dome\*  
**S** Standard\*\*

**Actuator Indicator**  
**L1** Ring  
**L5** Ring & Power logo

### LED Illumination

Color	Dual color
<b>0</b> Without LED	<b>A</b> Red & Green
<b>2</b> White	<b>R</b> RGB***
<b>3</b> Red	
<b>4</b> Orange***	
<b>5</b> Yellow	
<b>6</b> Green	
<b>7</b> Blue	

**LED voltage DC**  
**00** 0V without resistor  
**03** 3V  
**06** 6V  
**12** 12V  
**24** 24V

**Terminal plating**  
**G** Gold flash

**Termination**  
**04** Solder lug  
**W1** Wire lead 500mm \*\*\*\*

**Mechanical function**  
**A** Momentary (Double D bushing)  
**E** Lock (D shape bushing)

**Contact arrangement**  
**S** SPST

### Bushing type

<b>B3</b> Al alloy (Black anodized)
<b>B4</b> Al alloy (Natural anodized)
<b>M0</b> Stainless (Natural), Round***
<b>M4</b> Stainless (Natural), Double D***

\* For bushing type B3 and B4 only.

\*\* Available on bushing type M0 & M4 only.

\*\*\* Available on momentary function only.

\*\*\*\* Available upon request, please consult your sales representative for details.

# ATP16 Series Anti-Vandal Sealed Pushbutton Switch

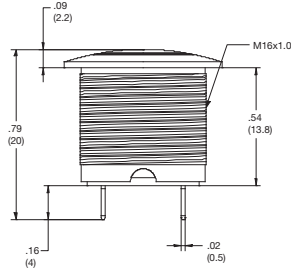


A  
Pushbutton

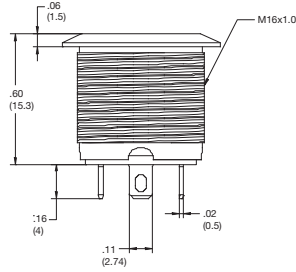
## STANDARD VIEW

### MOMENTARY

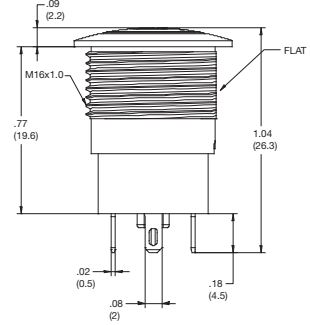
#### DOME



#### STANDARD / FLAT

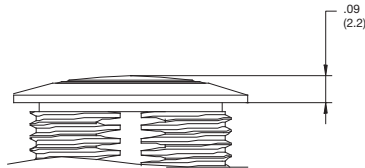


### LOCK

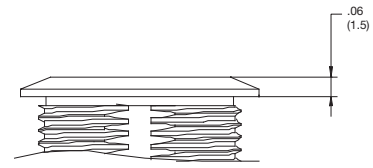


## ACTUATOR STYLE

### D DOME

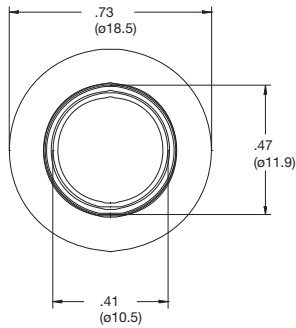


### S STANDARD / FLAT

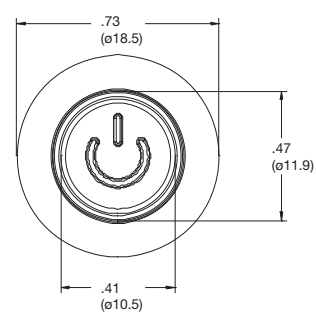


## ACTUATOR INDICATOR

### L1 RING



### L5 RING & POWER

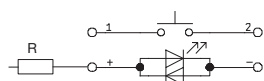




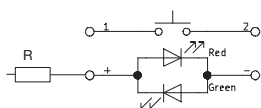
# ATP16 Series Anti-Vandal Sealed Pushbutton Switch

## CIRCUIT

SINGLE COLOR LED

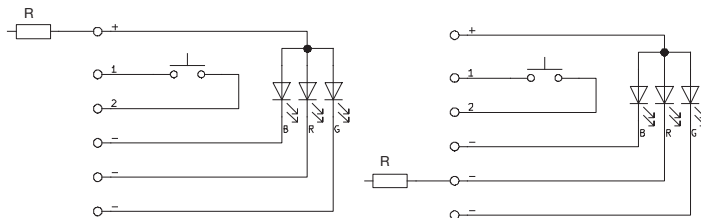


DUAL COLOR LED



### MOMENTARY

RGB LED

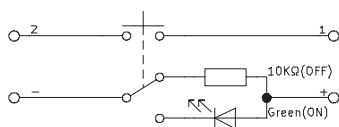


6 / 12 / 24V LED

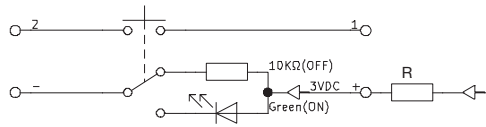
3V LED

### LOCK

SINGLE COLOR LED

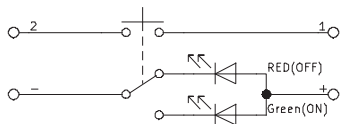


3V LED

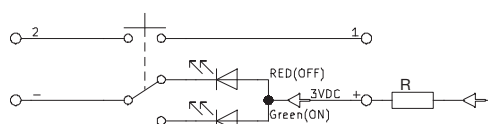


6 / 12 / 24V LED

DUAL COLOR LED



3V LED



6 / 12 / 24V LED

R: Resistor value is according to the LED voltage applied.

Resistor value  
(Apply LED Voltage)

LED input 3 VDC, 47 ohms  
(Red/Yellow/Orange LED type only)

LED input 6 VDC, 180 ohms

LED input 12 VDC, 470 ohms

LED input 24 VDC, 1000 ohms

Ohms value of resistance tolerance:  $\pm 5\%$



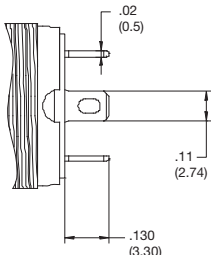
A

Pushbutton

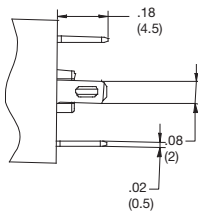
TERMINATION

04 SOLDER LUG

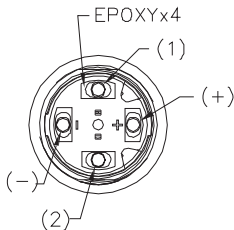
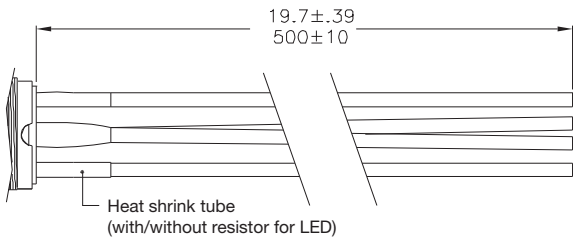
MOMENTARY



LOCK



W1 WIRE LEAD 500MM\*

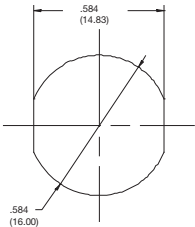


\* Available upon request, please consult your sales representative for details.

PANEL CUTOUT

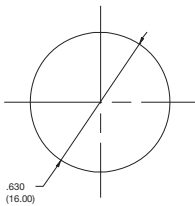
B3, B4 & M4

DOUBLE D



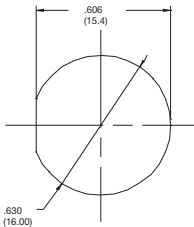
M0

ROUND



B3 & B4

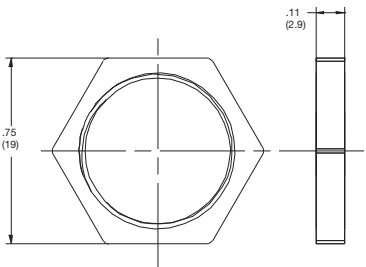
D SHAPE



HARDWARE

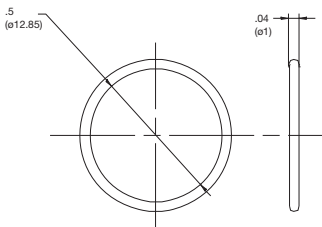
HEX NUT

Order PN: ATP16-HN



O RING

Order PN: ATP16-OR



# Mouser Electronics

Authorized Distributor

Click to View Pricing, Inventory, Delivery & Lifecycle Information:

## C&K Switches:

[ATP16-SL1-612-M4SA-04G](#) [ATP16-DL5-606-B3SA-04G](#) [ATP16-DL5-306-B4SA-04G](#) [ATP16-DL1-000-B4SA-04G](#)