

# C&K SP Series Single In-line Package Switches



## Features/Benefits

- **Thin Single In-line Packaging saves PCB space**
- **Retention feature holds part to PCB prior to soldering**
- **Available in vertical or right angle models**
- **High pressure contact system does not require tape sealing**

## Typical Applications

- **Address switch for industrial controls**
- **Logic switching for computers and peripherals**
- **Function controlling for numerous applications**

## How To Order

Complete part numbers for SP Series standard profile SIP Switches are shown on pages H-13 thru H-14.

## Specifications

### CONTACT RATING:

Carry: 100 mA

Switching: 10 mA

MECHANICAL AND ELECTRICAL LIFE: 1,000 cycles min.

CONTACT RESISTANCE: 50 MΩ max. @ 20 V DC 10mA.

INSULATION RESISTANCE: 100 MΩ min. @ 100 V DC.

DIELECTRIC STRENGTH: 1 minute @ 300 V AC.

CAPACITANCE: 5pF max. between adjacent terminals.

OPERATING TEMPERATURE: -20°C to 85°C.

STORAGE TEMPERATURE: -40°C to 85°C.

OPERATING FORCE: 800 grams max.

SOLDERABILITY: Dip & look solderability testing per C&K spec.

#448. Unplated edges of terminals permitted.

PACKAGING: Switches supplied in rigid dispensing tubes in full-tube quantities only, this may affect order quantity. Numbers of switches per tube varies with model.

## Materials

HOUSING: PBT resin (UL 94V-0).

COVER: PBT resin (UL 94V-0).

ACTUATOR: 4/6 Nylon (UL 94V-0).

MOVABLE CONTACT: Beryllium copper alloy, gold over nickel plate.

FIXED CONTACT: Brass plate, solder coated.

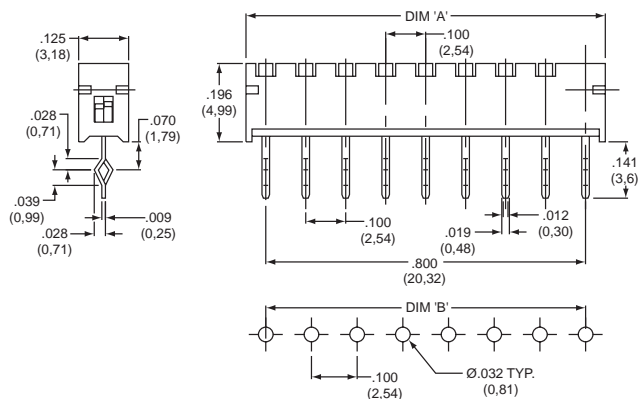
CLIP: Beryllium copper, gold plated.

**NOTE:** Specifications and materials listed above are for switches with standard options.  
For information on specific and custom switches, consult Customer Service Center.

## Vertical



SP08



PART NUMBER	NO.POS.	DIM. 'A'	DIM. 'B'	QUANTITY PER TUBE
SP02	2	.298 (7,58)	.200 (5,08)	60
SP04	4	.498 (12,66)	.400 (10,16)	35
SP06	6	.698 (17,74)	.600 (15,24)	25
SP08	8	.898 (22,82)	.800 (20,32)	20
SP10	10	1.098 (27,9)	1.000 (25,40)	15

Schematic

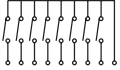
SPST

# C&K SP Series Single In-line Package Switches

## Right Angle

APART NUMBER	NO.POS.	DIM. 'A'	DIM. 'B'	DIM. 'C'	QUANTITY PER TUBE
<b>SP02A</b>	2	.298 (7,58)	.200 (5,08)	.338 (8,58)	50
<b>SP04A</b>	4	.498 (12,66)	.400 (10,16)	.538 (13,66)	35
<b>SP06A</b>	6	.698 (17,74)	.600 (15,24)	.738 (18,74)	25
<b>SP08A</b>	8	.898 (22,82)	.800 (20,32)	.938 (23,82)	20
<b>SP10A</b>	10	1.098 (27,9)	1.000 (25,40)	1.138 (28,9)	15

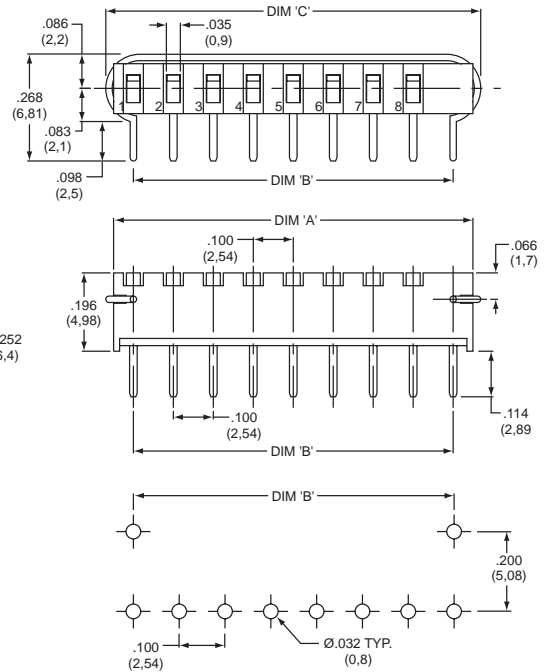
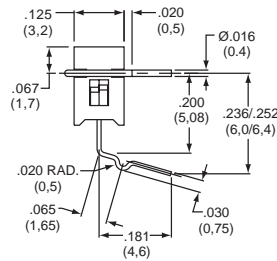
Schematic



SPST



SP08A



# Mouser Electronics

Authorized Distributor

Click to View Pricing, Inventory, Delivery & Lifecycle Information:

## C&K Switches:

[SP08A](#) [SP02A](#) [SP06A](#) [SP04A](#) [SP06](#) [SP08](#) [SP10](#) [SP04](#) [SP02](#) [SP10A](#)