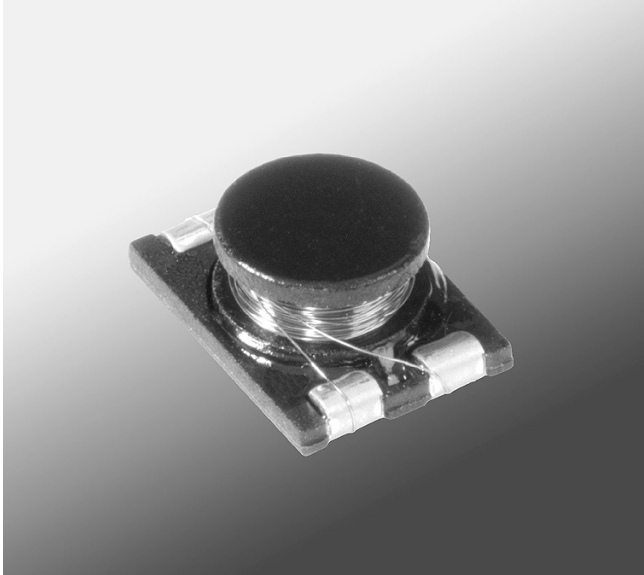




DW3316 Coupled Inductors for xDSL



- Coupled inductor optimized for xDSL filtering applications
- Can be used as a common mode choke, 1:1 transformer or in SEPIC applications

Core material Ferrite

Terminations RoHS compliant gold over nickel over phos bronze. Other terminations available at additional cost.

Weight 1.13 – 1.34 g

Ambient temperature –40°C to +85°C

Storage temperature Component: –40°C to +85°C.
Tape and reel packaging: –40°C to +80°C

Resistance to soldering heat Max three 40 second reflows at +260°C, parts cooled to room temperature between cycles

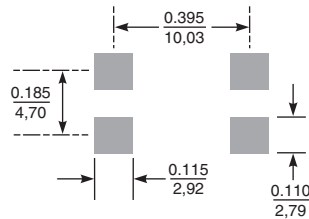
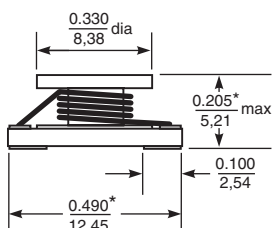
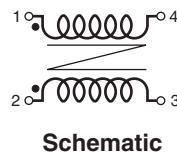
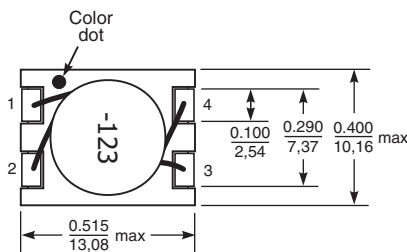
Moisture Sensitivity Level (MSL) 1 (unlimited floor life at <30°C / 85% relative humidity)

Failures in Time (FIT) / Mean Time Between Failures (MTBF)
38 per billion hours / 26,315,789 hours, calculated per Telcordia SR-332

Packaging 750 per 13" reel Plastic tape: 24 mm wide, 0.36 mm thick, 16 mm pocket spacing, 5.5 mm pocket depth

PCB washing Tested to MIL-STD-202 Method 215 plus an additional aqueous wash. See [Doc787_PCB_Washing.pdf](#).

Part number ¹	Inductance ² ±20% (mH)	DCR max (Ohms)	SRF ³ typ (MHz)	Isat ⁴ (mA)
DW3316-155ML_	1.5	10.8	1.70	300
DW3316-275ML_	2.7	18.0	1.25	230
DW3316-335ML_	3.3	20.0	1.10	180
DW3316-395ML_	3.9	23.0	0.968	160
DW3316-475ML_	4.7	26.0	0.850	160
DW3316-685ML_	6.8	42.0	0.690	150



Recommended Land Pattern

* Allow an additional 0.01/0.254 in length and 0.005/0.127 in height for optional tin-lead and tin-silver-copper application.

Dimensions are in $\frac{\text{inches}}{\text{mm}}$

- When ordering, please specify **termination** and **packaging** codes:

DW3316-685MLD

Termination: L = Gold over nickel over phos bronze terminations
Special order: T = RoHS tin-silver-copper (95.5/4/0.5) or S = non-RoHS tin-lead (63/37).

Packaging: D = 13" machine-ready reel. EIA-481 embossed plastic tape (750 parts per full reel). Quantities less than full reel available: in tape (not machine ready) or with leader and trailer (\$25 charge).

B = Less than full reel. In an effort to simplify our part numbering system, Coilcraft is eliminating the need for multiple packaging codes. When ordering, simply change the last letter of your part number from B to D.

- Inductance is per winding, tested at 10 kHz, 0.1 Vrms, 0 Adc using an Agilent/HP 4263B LCR meter or equivalent.
- SRF is measured using an Agilent/HP 8753D network analyzer.
- DC current at which the inductance drops 10% (typ) from its value without current.
- Electrical specifications at 25°C.

Refer to Doc 362 "Soldering Surface Mount Components" before soldering.

Mouser Electronics

Authorized Distributor

Click to View Pricing, Inventory, Delivery & Lifecycle Information:

Coilcraft:

[DW3316-335MLB](#) [DW3316-275MLB](#) [DW3316-395MLD](#) [DW3316-475MLB](#) [DW3316-155MLD](#) [DW3316-685MLB](#)
[DW3316-395MLB](#) [DW3316-685MLD](#) [DW3316-155MLB](#) [DW3316-335MLD](#) [DW3316-475MLD](#) [DW3316-275MLD](#)