



Application Note

AN000607

Behind OLED Proximity Design Considerations

Minimizing Crosstalk and Emitter Placement

v1-00 • 2019-Jul-03

Content Guide

1	Introduction.....	3	5	Legal Information	10
2	Proximity Behind OLED	4			
3	Summary	8			
4	Revision Information	9			

1 Introduction

ams proximity sensors function by pulsing an IR emitter, which can be either an Infrared Light Emitting Diode (IR-LED) or a Vertical Cavity Surface Emitting Laser (VCSEL), and measuring the reflected energy returned from a target. The amount of reflected energy is inversely proportional to the target distance and proportional to the target size and reflectance. The trend toward narrow bezel and no bezel smart phone designs presents new challenges beyond those that occur with traditional proximity system designs that use IR ink apertures on a wide bezel. The narrow bezel and no bezel designs usually require that the proximity sensor be placed Behind the OLED (BOLED). This application note will describe options for the implementation of BOLED proximity systems.

2 Proximity Behind OLED

Traditional proximity sensor modules consist of an emitter and detector within a single device and includes an isolation barrier between the two. These modules are great when used with a bezel behind IR-ink apertures, but in a BOLED application, they limit the flexibility of emitter type, emitter location, number of emitters, etc. A photodiode in a smaller package, paired with a discrete emitter (IR-LED or VCSEL) may be a better choice to overcome any flexibility limitations. A popular choice from **ams** is the TCS3708. This is a small device, in an FN package, that is ideally suited for BOLED applications. However, special design considerations are necessary to achieve optimal proximity sensing performance.

Figure 1 shows the TCS3708 proximity sensor in the clear mold FN package. This package, which is small and thin, is ideal for placement behind an OLED display. However, the clear mold will allow light to enter from undesired directions (primarily the sides of the device) resulting in an unacceptable amount of crosstalk.

Figure 1:
Discrete Proximity Sensor Device

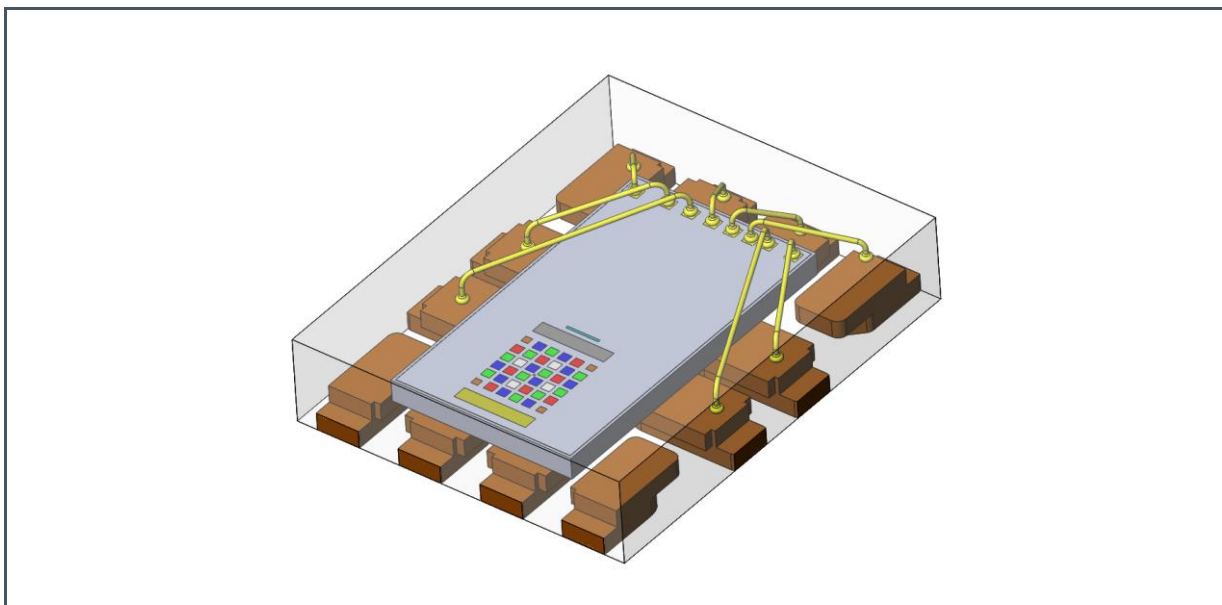
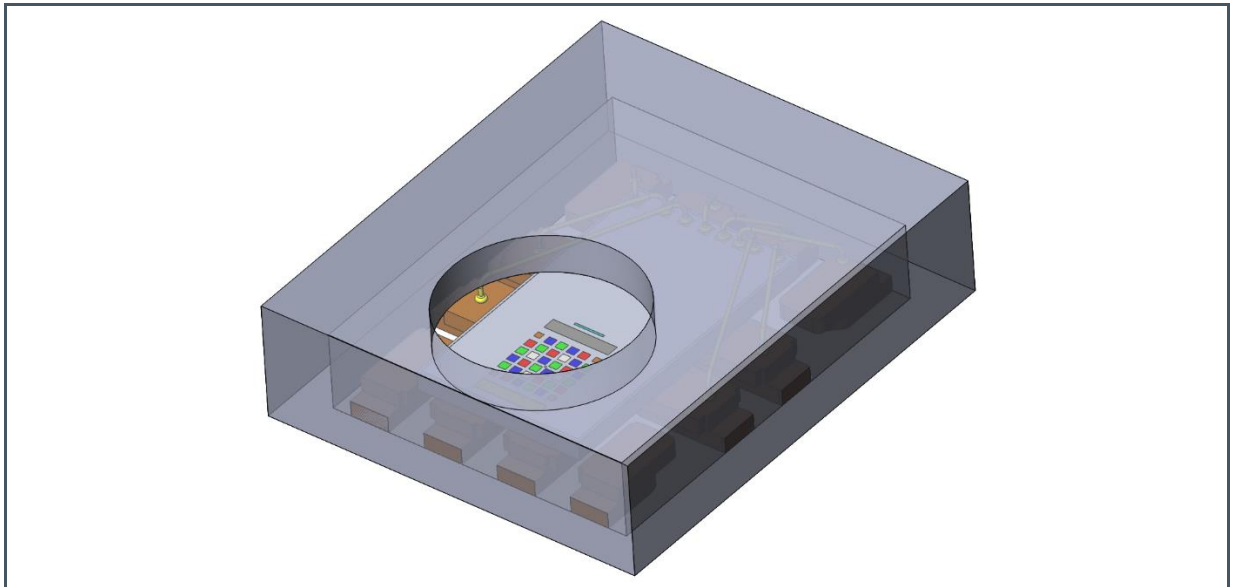


Figure 2 shows the TCS3708 proximity device covered by an opaque, non-reflective black rubber boot with an appropriately sized aperture over the photodiode area. The boot should fill the air gap (which should be as small as possible) between the proximity sensor and the bottom side of the OLED. This boot will only allow light to enter through the aperture to reach the photodiode, eliminating nearly all of the crosstalk energy that would have otherwise entered through the clear mold from the sides of the device. The material chosen for this should be a soft, flexible rubber or neoprene.

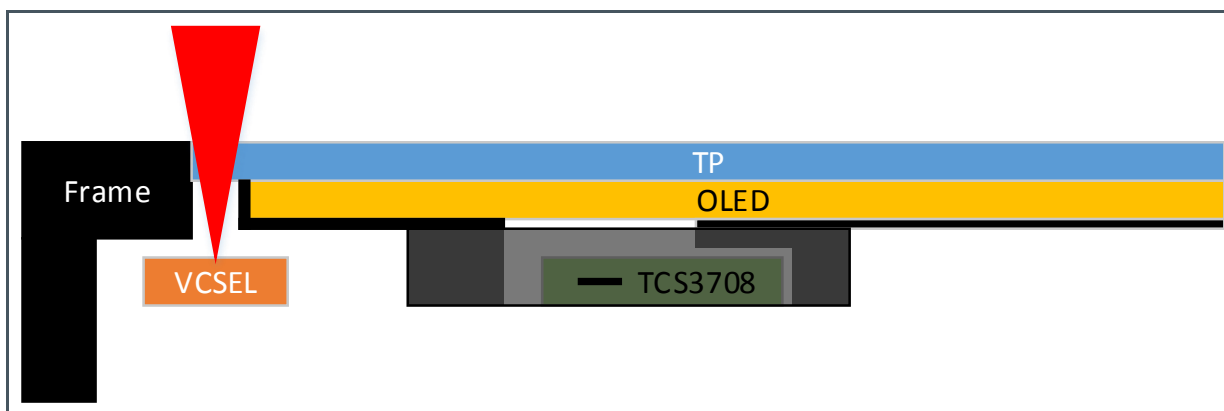
Figure 2:
Discrete Proximity Device Covered by a Rubber Boot



The IR transmissivity of an OLED display is inherently low, primarily due to the required layers of metallization that are present. In order to get the most reflected IR energy through the display to the photodiode, any non-essential, IR-blocking materials on the bottom side of the display (protective barriers, copper, glue, etc.), must be removed to essentially create an aperture on the bottom side of the display. The design and the shape of this aperture should be optimized to maximize proximity signal and to minimize crosstalk. An optimized display aperture is one that is aligned with the device's package (or rubber boot) aperture and is the same shape but slightly oversized. The ideal aperture design for the sensor will consider the sensor's Field-Of-View (FOV), boot thickness, air gap, mechanical tolerances, assembly tolerances, etc. The same guidelines above apply to the emitter Field-Of-Illumination (FOI).

The second component in the proximity detection system is the IR emitter. This could be either an IR-LED or a VCSEL. A key consideration in this type of an application is choosing the best location for the emitter. A narrow bezel area that would support the placement of an IR-linked aperture for the emitter would be the ideal case. For a full no-bezel design, most mobile phones will have a narrow channel between the display and the frame, which provides an acceptable location as long as the mechanical and placement tolerances can be properly managed. Figure 3 illustrates this concept. Note that the area around the emitter needs to be covered with an opaque, non-reflective material (shown in black) to minimize stray light.

Figure 3:
Emitter in the Display/Frame Gap.

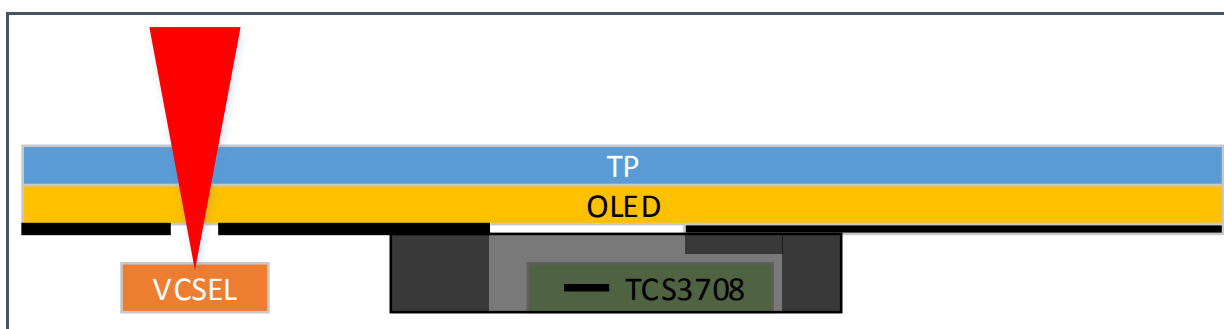


There are several advantages to placing the emitter in this location:

1. The emitted IR energy does not pass through the OLED so the outgoing IR pulses are not subjected to the low IR transmissivity of the OLED.
2. There will not be any issue of screen distortion that could occur when the emitter is placed behind the OLED.
3. Reduced crosstalk compared to BOLED designs where the emitter is behind the OLED and the IR energy enters and exits the OLED display.

A much more challenging architecture involves placing the emitter behind the OLED display, as shown in Figure 4. This configuration has the advantage of not requiring any bezel at all, however the output energy and emitter pulse timing must be carefully controlled in order to achieve an adequate proximity response while avoiding visible screen distortion. Note that a circular aperture of appropriate size on the bottom side of the display will be required.

Figure 4:
Emitter Behind the OLED

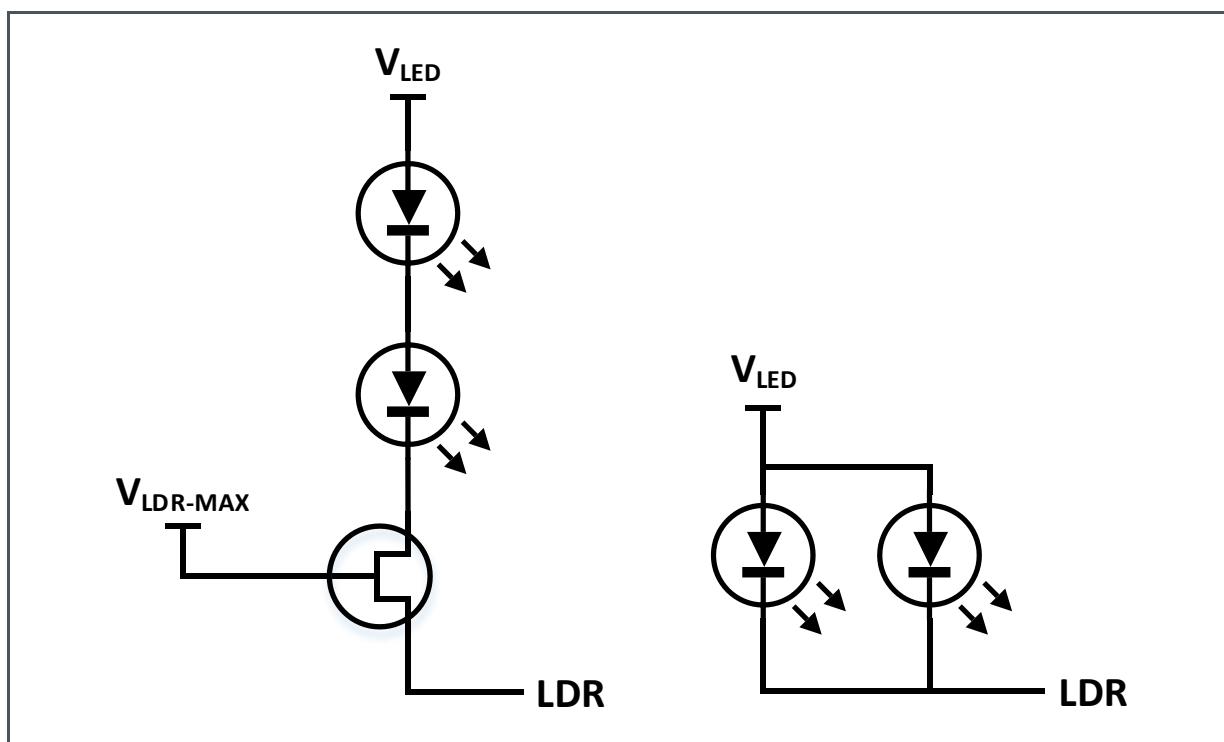


For displays that have a blanking time, with an associated hardware timing signal, the TCS3708 has a Sync input feature (patent pending) which allows an external pulse to be used to trigger the start of the

proximity cycle. Using this feature, the proximity pulses can be triggered to occur during a specific time when visual screen distortion is less likely to be noticeable. It may be necessary to add a delay to the Sync signal to precisely trigger the proximity cycle. This delay will vary depending on the display itself and on exactly where the emitter is placed under the display. A clock that is synchronized to the screen blanking should be used to generate the Sync signal, in order to avoid any negative effects caused by drifting. For displays that have programmable blanking interval timing built in, this delay may not be necessary.

It may be that the best result occurs when multiple emitters are used. Multiple emitters can be connected in parallel or in series. If connected in parallel, it is important to carefully match the device-to-device power output in order to prevent brightness differences between the emitters. Unbalanced emitters, connected in parallel, could result in the higher power emitter causing a visible screen distortion. When connected in series, a higher V_{LED} may be required due to the series V_F of multiple emitters. In this case, a transistor circuit would be required to prevent the LDR pin from exceeding the LDR absolute maximum voltage. Figure 5 shows simplified examples of basic multiple emitter implementations. In an application, the actual design will be determined by system constraints (available voltages, emitter type, etc.) and system requirements (ESD protection, etc.).

Figure 5:
Multiple Emitter Examples



As with any discrete proximity implementation, placement optimizations (i.e. the distance between the emitter and sensor) will be required to determine the tradeoffs between detect/release curves, black hair response and contamination response. Simulations can help for comparisons, but the best approach is to build prototypes and experiment.

3 Summary

Implementing a proximity sensor behind an OLED display is not a simple task. The wide variety of OLED displays that are available means that each design requires a customized solution to match the operational characteristics of the display used. Using **ams** evaluation boards to build prototype systems that can be fine-tuned to meet system design requirements is the best approach to achieve a successful system design.

4 Revision Information

Changes from previous version to current revision v1-00	Page
Initial version	

- Page and figure numbers for the previous version may differ from page and figure numbers in the current revision.
- Correction of typographical errors is not explicitly mentioned.

5 Legal Information

Copyrights & Disclaimer

Copyright ams AG, Tobelbader Strasse 30, 8141 Premstaetten, Austria-Europe. Trademarks Registered. All rights reserved. The material herein may not be reproduced, adapted, merged, translated, stored, or used without the prior written consent of the copyright owner.

Information in this document is believed to be accurate and reliable. However, ams AG does not give any representations or warranties, expressed or implied, as to the accuracy or completeness of such information and shall have no liability for the consequences of use of such information.

Applications that are described herein are for illustrative purposes only. ams AG makes no representation or warranty that such applications will be appropriate for the specified use without further testing or modification. ams AG takes no responsibility for the design, operation and testing of the applications and end-products as well as assistance with the applications or end-product designs when using ams AG products. ams AG is not liable for the suitability and fit of ams AG products in applications and end-products planned.

ams AG shall not be liable to recipient or any third party for any damages, including but not limited to personal injury, property damage, loss of profits, loss of use, interruption of business or indirect, special, incidental or consequential damages, of any kind, in connection with or arising out of the furnishing, performance or use of the technical data or applications described herein. No obligation or liability to recipient or any third party shall arise or flow out of ams AG rendering of technical or other services.

ams AG reserves the right to change information in this document at any time and without notice.

RoHS Compliant & ams Green Statement

RoHS Compliant: The term RoHS compliant means that ams AG products fully comply with current RoHS directives. Our semiconductor products do not contain any chemicals for all 6 substance categories, including the requirement that lead not exceed 0.1% by weight in homogeneous materials. Where designed to be soldered at high temperatures, RoHS compliant products are suitable for use in specified lead-free processes.

ams Green (RoHS compliant and no Sb/Br): ams Green defines that in addition to RoHS compliance, our products are free of Bromine (Br) and Antimony (Sb) based flame retardants (Br or Sb do not exceed 0.1% by weight in homogeneous material).

Important Information: The information provided in this statement represents ams AG knowledge and belief as of the date that it is provided. ams AG bases its knowledge and belief on information provided by third parties, and makes no representation or warranty as to the accuracy of such information. Efforts are underway to better integrate information from third parties. ams AG has taken and continues to take reasonable steps to provide representative and accurate information but may not have conducted destructive testing or chemical analysis on incoming materials and chemicals. ams AG and ams AG suppliers consider certain information to be proprietary, and thus CAS numbers and other limited information may not be available for release.

Headquarters

ams AG
Tobelbader Strasse 30
8141 Premstaetten
Austria, Europe
Tel: +43 (0) 3136 500 0

Please visit our website at www.ams.com

Buy our products or get free samples online at www.ams.com/Products

Technical Support is available at www.ams.com/Technical-Support

Provide feedback about this document at www.ams.com/Document-Feedback

For sales offices, distributors and representatives go to www.ams.com/Contact

For further information and requests, e-mail us at ams_sales@ams.com

Mouser Electronics

Authorized Distributor

Click to View Pricing, Inventory, Delivery & Lifecycle Information:

[ams OSRAM:](#)

[TCS37083](#)