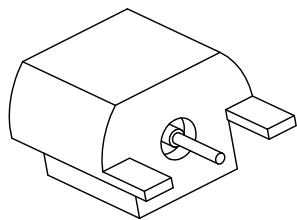
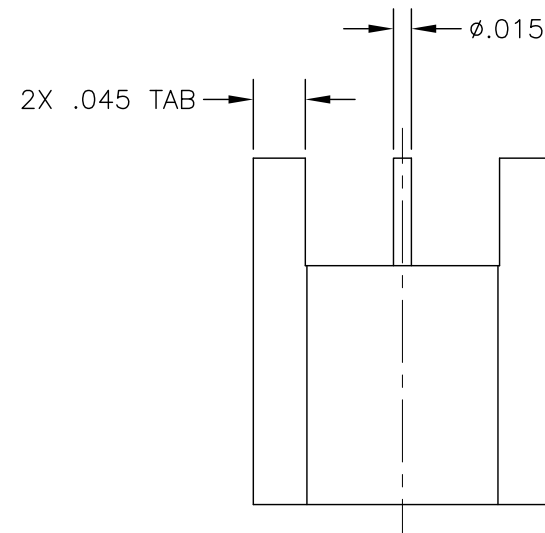
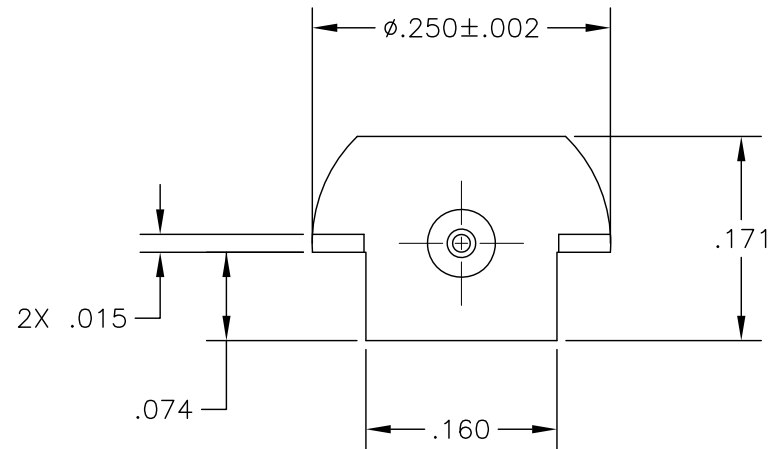
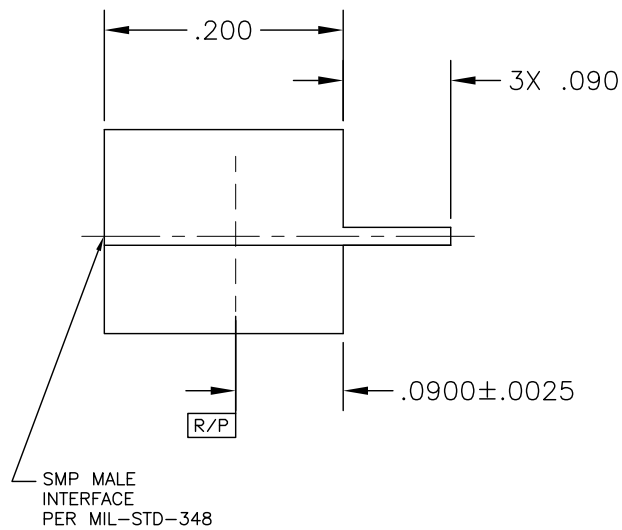



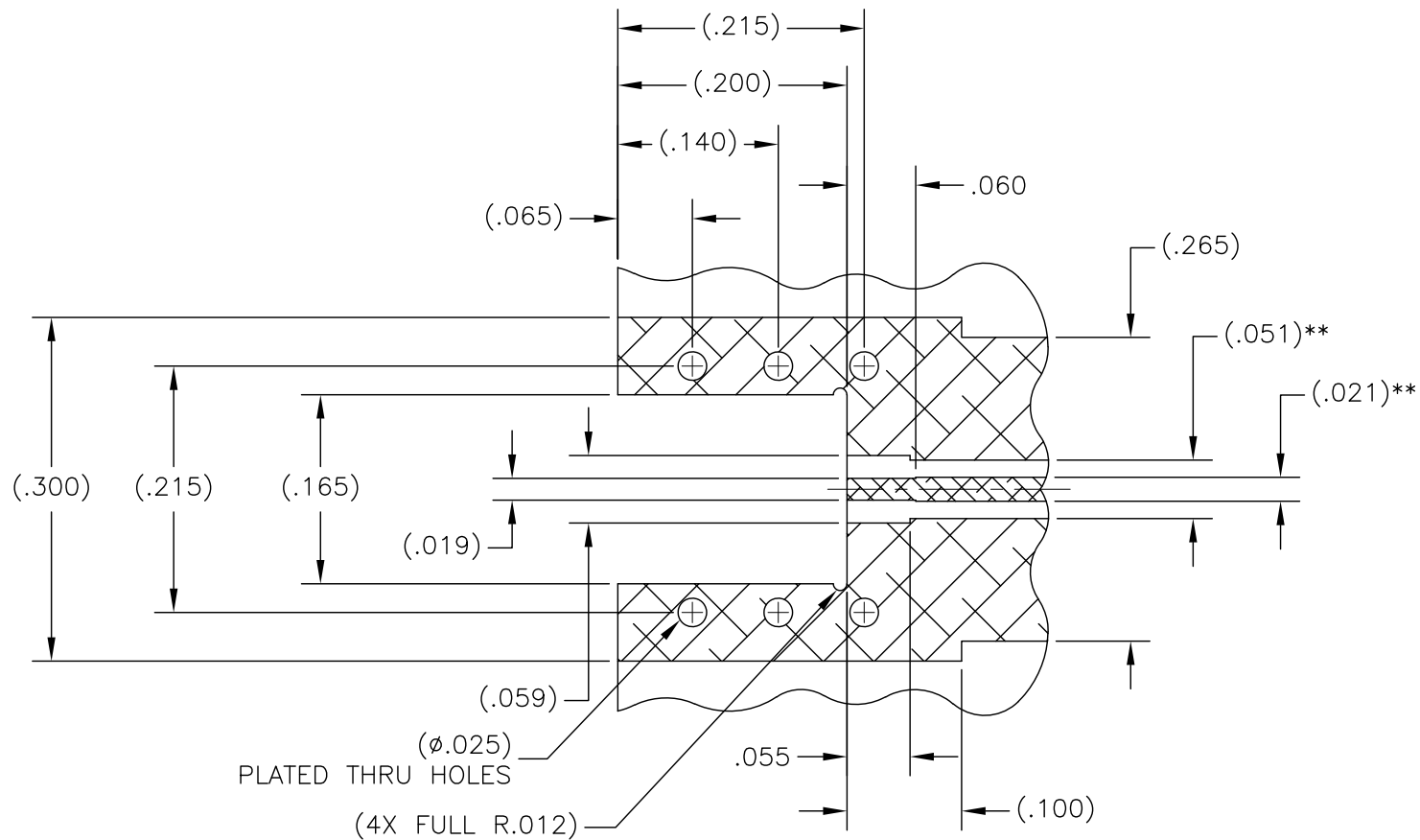
OUTLINE DRAWING



COMPONENT	MATERIAL & FINISH		 MICRO—MODE PRODUCTS, INC. The Reliable Connection to the Future		El Cajon, CA 92020 ph 619.449.3844 www.micromode.com	CAGE CODE 15907	
BODY, CONTACT, BUSHING	BeCu, ASTM B196, UNS C17300	GOLD PLATE, MIL—G—45204, TYPE 1, GRADE C, CLASS 1	ASSY PROCEDURES: N/A		SMP MALE, FULL DETENT EDGE LAUNCH		
INSULATOR	PTFE, ASTM D1710, TYPE I, GRADE 1, CLASS A		INSERTION/EXTRACTION TOOL: N/A				
			SHEET 1 OF 2		5—10—06 . EB	PART NO. MMSP—7457	REVISION A

OUTLINE DRAWING

OUTLINE DRAWING



OPERATING FREQUENCY	DC TO 50 GHz
VSWR	1.35:1 MAX - DC TO 50 GHz
INSERTION LOSS	0.03 \sqrt{f} (GHz)
RF HIGH POT	325 Vrms MIN @ 5 MHz
INSULATION RESISTANCE	5,000 MEGOHMS MINIMUM
DWV	500 VRMS

RF LEAKAGE	-80dB TO 3 GHz -65dB 3-26.5 GHz
IMPEDANCE	50 OHMS NOMINAL
CENTER/OUTER CONTACT RESISTANCE	6.0/2.0 mOHMS
OPERATING TEMPERATURE	-65°C TO +165°C
NON-OPERATING TEMPERATURE	-65°C TO +165°C

FORCE TO ENGAGE	15.0 LBS MAXIMUM
FORCE TO DISENGAGE	5.0 LBS MINIMUM
DURABILITY	100 CYCLES MINIMUM
VIBRATION	MIL-STD-202, METHOD 204, CONDITION D
SHOCK	MIL-STD-202, METHOD 213, CONDITION I
THERMAL SHOCK	MIL-STD-202, METHOD 107, CONDITION B

*THESE DIMENSIONS ARE PROVIDED AS A REFERENCE. CUSTOMER APPLICATIONS MAY VARY AND REQUIRE SPECIAL FEATURES THAT ARE MATCHED TO THE LAUNCH TRANSITION.

** FOR ROGERS 4350. OTHER BOARD TYPES MAY REQUIRE DIFFERENT DIMENSIONS



MICRO-MODE PRODUCTS, INC.
The Reliable Connection to the Future

El Cajon, CA 92020
ph 619.449.3844
www.micromode.com

CAGE CODE
15907

ASSY PROCEDURES: N/A

INSERTION/EXTRACTION TOOL: N/A

SMP MALE, FULL DETENT
EDGE LAUNCH

PART NO.

MMSP-7457

REVISION

A

SHEET 2 OF 2

5-10-06

DR

OUTLINE DRAWING

Mouser Electronics

Authorized Distributor

Click to View Pricing, Inventory, Delivery & Lifecycle Information:

[Micro-Mode:](#)

[MMSP-7457](#)