

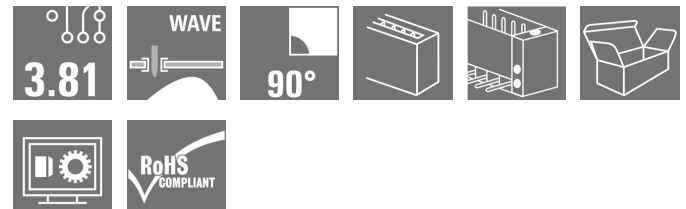
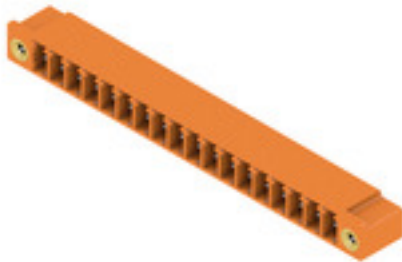
**SC 3.81/18/90F 3.2SN OR BX****Weidmüller Interface GmbH & Co. KG**

Klingenbergstraße 26

D-32758 Detmold

Germany

www.weidmueller.com

**Product image**

The SC pin header has a parallel (recumbent) plugging direction in relation to the PCB. It is available in closed (G) and screw flange (F) versions.

Weidmüller's 3.81-mm-pitch (0.15 inch) plug-in connectors are compatible with the layouts of standard connectors. They support a flood-light display and offer space for labelling and coding.

**General ordering data**

|              |                                                                                                                                                          |
|--------------|----------------------------------------------------------------------------------------------------------------------------------------------------------|
| Version      | PCB plug-in connector, male header, Flange, THT solder connection, 3.81 mm, Number of poles: 18, 90°, Solder pin length (l): 3.2 mm, tinned, orange, Box |
| Order No.    | <a href="#">1942610000</a>                                                                                                                               |
| Type         | SC 3.81/18/90F 3.2SN OR BX                                                                                                                               |
| GTIN (EAN)   | 4032248654987                                                                                                                                            |
| Qty.         | 18 pc(s).                                                                                                                                                |
| Product data | IEC: 320 V / 17.5 A<br>UL: 300 V / 10 A                                                                                                                  |
| Packaging    | Box                                                                                                                                                      |

Creation date January 29, 2022 8:13:29 AM CET

## SC 3.81/18/90F 3.2SN OR BX

Weidmüller Interface GmbH &amp; Co. KG

Klingenbergstraße 26

D-32758 Detmold

Germany

www.weidmueller.com

## Technical data

## Dimensions and weights

|                          |            |                 |            |
|--------------------------|------------|-----------------|------------|
| Depth                    | 9.2 mm     | Depth (inches)  | 0.362 inch |
| Height                   | 10.3 mm    | Height (inches) | 0.406 inch |
| Height of lowest version | 7.1 mm     | Width           | 79.18 mm   |
| Width (inches)           | 3.117 inch | Net weight      | 5.5 g      |

## Environmental Product Compliance

|            |                |
|------------|----------------|
| REACH SVHC | Lead 7439-92-1 |
|------------|----------------|

## System specifications

|                                              |                                     |                     |                                                    |
|----------------------------------------------|-------------------------------------|---------------------|----------------------------------------------------|
| Product family                               | OMNIMATE Signal - series BC/SC 3.81 |                     |                                                    |
| Type of connection                           | Board connection                    |                     |                                                    |
| Mounting onto the PCB                        | THT solder connection               |                     |                                                    |
| Pitch in mm (P)                              | 3.81 mm                             |                     |                                                    |
| Pitch in inches (P)                          | 0.15 inch                           |                     |                                                    |
| Outgoing elbow                               | 90°                                 |                     |                                                    |
| Number of poles                              | 18                                  |                     |                                                    |
| Number of solder pins per pole               | 1                                   |                     |                                                    |
| Solder pin length (l)                        | 3.2 mm                              |                     |                                                    |
| Solder pin length tolerance                  | 0 / -0.2 mm                         |                     |                                                    |
| Solder pin dimensions                        | d = 1.0 mm, Octagonal               |                     |                                                    |
| Solder pin dimensions = d tolerance          | 0 / -0.03 mm                        |                     |                                                    |
| Solder eyelet hole diameter (D)              | 1.2 mm                              |                     |                                                    |
| Solder eyelet hole diameter tolerance (D)+   | 0, 1 mm                             |                     |                                                    |
| L1 in mm                                     | 64.77 mm                            |                     |                                                    |
| L1 in inches                                 | 2.55 inch                           |                     |                                                    |
| Number of rows                               | 1                                   |                     |                                                    |
| Pin series quantity                          | 1                                   |                     |                                                    |
| Touch-safe protection acc. to DIN VDE 57 106 | Safe from finger touch              |                     |                                                    |
| Touch-safe protection acc. to DIN VDE 0470   | IP 20                               |                     |                                                    |
| Volume resistance                            | ≤5 mΩ                               |                     |                                                    |
| Can be coded                                 | Yes                                 |                     |                                                    |
| Plugging force/pole, max.                    | 7 N                                 |                     |                                                    |
| Pulling force/pole, max.                     | 5 N                                 |                     |                                                    |
| Tightening torque                            | Torque type                         | Mounting screw, PCB |                                                    |
|                                              | Usage information                   | Tightening torque   | min. 0.1 Nm                                        |
|                                              |                                     |                     | max. 0.15 Nm                                       |
|                                              |                                     | Recommended screw   | Part number <a href="#">PTSC KA 2.2X4.5 WN1412</a> |

## Material data

|                                       |              |                                       |        |
|---------------------------------------|--------------|---------------------------------------|--------|
| Insulating material                   | PA GF        | Colour                                | orange |
| Colour chart (similar)                | RAL 2000     | Insulating material group             | II     |
| Comparative Tracking Index (CTI)      | ≥ 550        | UL 94 flammability rating             | V-0    |
| Contact material                      | Copper alloy | Contact surface                       | tinned |
| Storage temperature, min.             | -40 °C       | Storage temperature, max.             | 70 °C  |
| Operating temperature, min.           | -50 °C       | Operating temperature, max.           | 120 °C |
| Temperature range, installation, min. | -25 °C       | Temperature range, installation, max. | 120 °C |

## SC 3.81/18/90F 3.2SN OR BX

Weidmüller Interface GmbH &amp; Co. KG

Klingenbergstraße 26

D-32758 Detmold

Germany


www.weidmueller.com

## Technical data


## Rated data acc. to IEC

|                                                                           |                        |                                                                       |                  |
|---------------------------------------------------------------------------|------------------------|-----------------------------------------------------------------------|------------------|
| tested acc. to standard                                                   | IEC 60664-1, IEC 61984 | Rated current, min. number of poles (Tu=20°C)                         | 17.5 A           |
| Rated current, max. number of poles (Tu=20°C)                             | 17.5 A                 | Rated current, min. number of poles (Tu=40°C)                         | 17.5 A           |
| Rated current, max. number of poles (Tu=40°C)                             | 16.3 A                 | Rated voltage for surge voltage class / pollution degree II/2         | 320 V            |
| Rated voltage for surge voltage class / pollution degree III/2            | 160 V                  | Rated voltage for surge voltage class / pollution degree III/3        | 160 V            |
| Rated impulse voltage for surge voltage class/ pollution degree II/2      | 2.5 kV                 | Rated impulse voltage for surge voltage class/ pollution degree III/2 | 2.5 kV           |
| Rated impulse voltage for surge voltage class/ contamination degree III/3 | 2.5 kV                 | Short-time withstand current resistance                               | 3 x 1s with 76 A |

## Rated data acc. to CSA

|                                   |                                                                                   |                                   |                |
|-----------------------------------|-----------------------------------------------------------------------------------|-----------------------------------|----------------|
| Institute (CSA)                   |  | Certificate No. (CSA)             | 200039-1121690 |
| Rated voltage (Use group B / CSA) | 300 V                                                                             | Rated current (Use group B / CSA) | 8 A            |
| Reference to approval values      | Specifications are maximum values, details - see approval certificate.            |                                   |                |

## Rated data acc. to UL 1059

|                                       |                                                                                     |                                       |        |
|---------------------------------------|-------------------------------------------------------------------------------------|---------------------------------------|--------|
| Institute (cURus)                     |  | Certificate No. (cURus)               | E60693 |
| Rated voltage (Use group B / UL 1059) | 300 V                                                                               | Rated voltage (Use group D / UL 1059) | 300 V  |
| Rated current (Use group B / UL 1059) | 10 A                                                                                | Rated current (Use group D / UL 1059) | 10 A   |
| Reference to approval values          | Specifications are maximum values, details - see approval certificate.              |                                       |        |

## Packing

|           |        |            |        |
|-----------|--------|------------|--------|
| Packaging | Box    | VPE length | 338 mm |
| VPE width | 130 mm | VPE height | 27 mm  |

## Classifications

|             |             |             |             |
|-------------|-------------|-------------|-------------|
| ETIM 6.0    | EC002637    | ETIM 7.0    | EC002637    |
| ETIM 8.0    | EC002637    | ECLASS 9.0  | 27-44-04-02 |
| ECLASS 9.1  | 27-44-04-02 | ECLASS 10.0 | 27-44-04-02 |
| ECLASS 11.0 | 27-46-02-01 |             |             |

## SC 3.81/18/90F 3.2SN OR BX

Weidmüller Interface GmbH &amp; Co. KG

Klingenbergstraße 26

D-32758 Detmold

Germany

www.weidmueller.com

## Technical data

## Important note

|                |                                                                                                                                                                                                                                                                                                                                                                                             |
|----------------|---------------------------------------------------------------------------------------------------------------------------------------------------------------------------------------------------------------------------------------------------------------------------------------------------------------------------------------------------------------------------------------------|
| IPC conformity | Conformity: The products are developed, manufactured and delivered according international recognized standards and norms and comply with the assured properties in the data sheet resp. fulfill decorative properties in accordance with IPC-A-610 "Class 2". Further claims on the products can be evaluated on request.                                                                  |
| Notes          | <ul style="list-style-type: none"> <li>• Additional colours on request</li> <li>• Rated current related to rated cross-section &amp; min. No. of poles.</li> <li>• Rated data refer only to the component itself. Clearance and creepage distances to other components are to be designed in accordance with the relevant application standards.</li> <li>• P on drawing = pitch</li> </ul> |

## Approvals

Approvals



|                       |         |
|-----------------------|---------|
| ROHS                  | Conform |
| UL File Number Search | E60693  |

## Downloads

|                                             |                                                                                                                                                                                                                                                                                                                                                                                                                                                                                                                                                                                    |
|---------------------------------------------|------------------------------------------------------------------------------------------------------------------------------------------------------------------------------------------------------------------------------------------------------------------------------------------------------------------------------------------------------------------------------------------------------------------------------------------------------------------------------------------------------------------------------------------------------------------------------------|
| Approval/Certificate/Document of Conformity | <a href="#">Declaration of the Manufacturer</a>                                                                                                                                                                                                                                                                                                                                                                                                                                                                                                                                    |
| Engineering Data                            | <a href="#">CAD data – STEP</a>                                                                                                                                                                                                                                                                                                                                                                                                                                                                                                                                                    |
| Engineering Data                            | <a href="#">EPLAN, WSCAD</a>                                                                                                                                                                                                                                                                                                                                                                                                                                                                                                                                                       |
| Product Change Notification                 | <a href="#">Change of packaging - DE</a><br><a href="#">Change of packaging - EN</a>                                                                                                                                                                                                                                                                                                                                                                                                                                                                                               |
| Catalogues                                  | <a href="#">Catalogues in PDF-format</a>                                                                                                                                                                                                                                                                                                                                                                                                                                                                                                                                           |
| Brochures                                   | <a href="#">FL DRIVES EN</a><br><a href="#">MB DEVICE MANUF. EN</a><br><a href="#">FL DRIVES DE</a><br><a href="#">FL BUILDING SAFETY EN</a><br><a href="#">FL APPL LED LIGHTING EN</a><br><a href="#">FL INDUSTR.CONTROLS EN</a><br><a href="#">FL MACHINE SAFETY EN</a><br><a href="#">FL HEATING ELECTR EN</a><br><a href="#">FL APPL INVERTER EN</a><br><a href="#">FL BASE STATION EN</a><br><a href="#">FL ELEVATOR EN</a><br><a href="#">FL POWER SUPPLY EN</a><br><a href="#">FL 72H SAMPLE SER EN</a><br><a href="#">PO OMNIMATE EN</a><br><a href="#">PO OMNIMATE EN</a> |

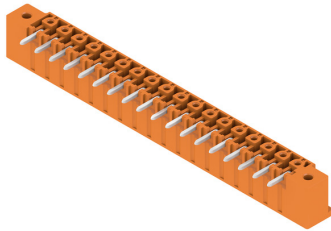
## SC 3.81/18/90F 3.2SN OR BX

**Weidmüller Interface GmbH & Co. KG**  
Klingenbergstraße 26  
D-32758 Detmold  
Germany

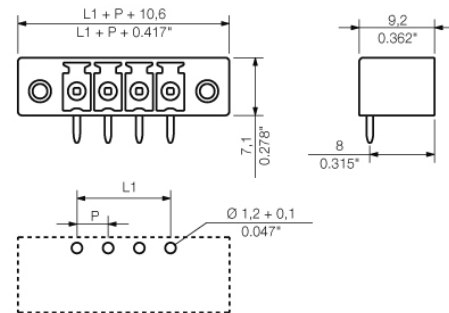
[www.weidmueller.com](http://www.weidmueller.com)

# Drawings

## Product image



## Dimensional drawing



## SC 3.81/18/90F 3.2SN OR BX

Weidmüller Interface GmbH &amp; Co. KG

Klingenbergstraße 26

D-32758 Detmold

Germany

www.weidmueller.com

## Accessories

## Coding elements

**Only connects what is supposed to be connected: the right connection at the right place.**

Coding elements and locking devices clearly assign connecting elements during the manufacturing process and operation

The coding elements and locking devices are inserted prior to assembly or during the cable assembly phase. The Weidmüller alternative: configure online using the variant configurator to precode prior to delivery.

Incorrect assembly on the circuit board and incorrect plugging of connecting elements is no longer possible. The advantage: no troubleshooting during manufacture and no operational errors by the user.

## General ordering data

| Type       | SC-SMT 3.81 KO GY BX       | Version                                                             | Product data | Packaging |
|------------|----------------------------|---------------------------------------------------------------------|--------------|-----------|
| Order No.  | <a href="#">1968900000</a> | PCB plug-in connector, Accessories, Coding element, grey, Number of |              | Box       |
| GTIN (EAN) | 4032248772865              | poles: 6                                                            |              |           |
| Qty.       | 100 pc(s).                 |                                                                     |              |           |

## LED Light guides

**Effective: the link between LED and front panel.**

Floodlight indicators allow users to monitor the switching states without requiring a special design: optical plastic directs the light from standard LEDs around a bend into the connectors or through the front plate.

The fibre-optic elements are simply clipped behind the relevant 90° bend male connectors (90° outlet direction). Versions with different incoming light beam heights achieve maximum light efficiency for LEDs with different designs or heights.

The advantages compared to conventional solutions:

- No additional LED circuit board required behind the front panel
- No "long-legged" LEDs with separate mounting required
- Bent fibre-optic cable line for maximum light efficiency
- Uncomplicated front plate bore holes due to circular shape of outgoing light beam
- Easy to maintain correct clearance and creepage distance
- Can be partitioned for smaller pole numbers

The result: simplified manufacturing process, reduced costs and simplified design

## General ordering data

| Type       | SC 3.81 FLA 2.3/16         | Version                                                               | Product data | Packaging |
|------------|----------------------------|-----------------------------------------------------------------------|--------------|-----------|
| Order No.  | <a href="#">1979740000</a> | PCB plug-in connector, Accessories, Flood-light display, Transparent, |              | Box       |
| GTIN (EAN) | 4032248752461              | Number of poles: 8                                                    |              |           |
| Qty.       | 50 pc(s).                  |                                                                       |              |           |

## SC 3.81/18/90F 3.2SN OR BX

Weidmüller Interface GmbH &amp; Co. KG

Klingenbergstraße 26

D-32758 Detmold

Germany

www.weidmueller.com

## Accessories

| Type       | SC 3.81 FLA 1.5/16         | Version                                                               | Product data | Packaging |
|------------|----------------------------|-----------------------------------------------------------------------|--------------|-----------|
| Order No.  | <a href="#">1979720000</a> | PCB plug-in connector, Accessories, Flood-light display, Transparent, |              | Box       |
| GTIN (EAN) | 4032248752447              | Number of poles: 8                                                    |              |           |
| Qty.       | 50 pc(s).                  |                                                                       |              |           |
| Type       | SC 3.81 FLA 2.3/14.25      | Version                                                               | Product data | Packaging |
| Order No.  | <a href="#">1979750000</a> | PCB plug-in connector, Accessories, Flood-light display, Transparent, |              | Box       |
| GTIN (EAN) | 4032248752478              | Number of poles: 8                                                    |              |           |
| Qty.       | 50 pc(s).                  |                                                                       |              |           |
| Type       | SC 3.81 FLA 1.5/14.25      | Version                                                               | Product data | Packaging |
| Order No.  | <a href="#">1979730000</a> | PCB plug-in connector, Accessories, Flood-light display, Transparent, |              | Box       |
| GTIN (EAN) | 4032248752454              | Number of poles: 8                                                    |              |           |
| Qty.       | 50 pc(s).                  |                                                                       |              |           |

## Additional accessories

**No task is too small when creating the perfect solution.** br />

Connections form just one part of the overall process. Small details are often the key to the perfect solution in applications where potentials are tested, grouped or even isolated.

A system is not a system without small but useful details:

- Test plugs - ensure reliable pick-up from diagnostic sockets
- Cross-connectors - ensure a stable electrical distribution contact directly at the connection
- Compartment partition elements - divide a large number of male connectors into several separate socket connector channels
- Locks and clips - optional vibration-resistant clip-on connection or mounting for male and female connectors

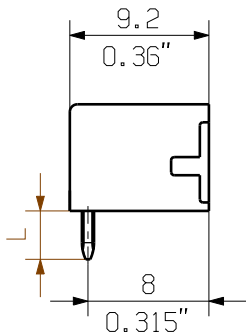
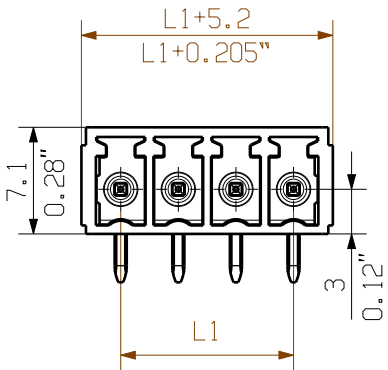
In tandem with the manufacturing process and application - more accessories = smaller workload

## General ordering data

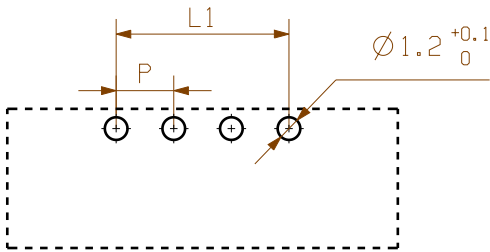
| Type       | PTSC KA 2.2X4.5 WN1412     | Version                                                       | Product data |
|------------|----------------------------|---------------------------------------------------------------|--------------|
| Order No.  | <a href="#">1610740000</a> | PCB plug-in connector, Accessories, Mounting screw, Number of |              |
| GTIN (EAN) | 4008190039523              | poles: 1                                                      |              |
| Qty.       | 100 pc(s).                 |                                                               |              |

08

SC 3.81/.../90G 3.2....



SC 3.81/.../90F 3.2...



PCB LAYOUT

KUNDENZEICHNUNG  
CUSTOMER DRAWING

P = 3.81

For the mounting of PCBs, it should be noted that the rated data given in the catalogue relates only to the connection elements. The necessary creepage and clearance paths must be observed in connection with the respective applicant in accordance to VDE 0110. The current-carrying capacity and pitch tolerance is to be determined according to DIN IEC 326 part 3 very fine.

Weidmüller connectors are tested to the DIN VDE 0627 standard, and are valid for its field of application. Provided that the connectors are used to the intended purpose, all requirements with respect to the occurring of electrical, mechanical, thermic and corrosive stress will be satisfied.

|                                      |  |                          |            |              |                                                                |  |
|--------------------------------------|--|--------------------------|------------|--------------|----------------------------------------------------------------|--|
| GENERAL TOLERANCE:<br>DIN ISO 2768-m |  | 97482/0<br>06.09.17 MA_J |            | 01           | Cat.no.: .                                                     |  |
| RoHS COMPLIANT                       |  | Max. nos.                |            | Modification |                                                                |  |
| Scale: 5/1                           |  | Drawn                    | 09.02.2006 | Name         | SC 3.81/.../90...3.2...<br>ANSCHLUSS STIFTHEISTE<br>PIN HEADER |  |
| Supersedes: .                        |  | Responsible              |            | MA_J         |                                                                |  |
|                                      |  | Checked                  | 13.09.2017 | ZHOU_N       |                                                                |  |
|                                      |  | Approved                 |            | XU_S         | Product file: SC 3.81                                          |  |

C 40384 08

Drawing no. Issue no.

Sheet 01 of 02 sheets

7069



## Recommended wave soldering profiles

**Weidmüller Interface GmbH & Co. KG**  
Klingenbergstraße 16  
D-32758 Detmold  
Germany  
Fon: +49 5231 14-0  
Fax: +49 5231 14-292083  
[www.weidmueller.com](http://www.weidmueller.com)

### Single Wave:



### Double Wave:



### Wave soldering profiles

Wired connection elements should be processed in accordance with the DIN EN 61760-1 standard. We have included two recommendations for practical wave soldering profiles, with which Weidmüller PCB terminals and connectors are qualified.

When choosing a suitable profile for your application, the following factors also need to be considered:

- PCB thickness
- Proportion of Cu in the layers
- Single/double-sided assembly
- Product range
- Heating and cooling rates

The single and double wave profiles each indicate the recommended operating range, including the maximum soldering temperature of 260°C. In practice, the maximum soldering temperature is quite often well below the above maximum profile.

We reserve the right to make technical changes.

# Mouser Electronics

Authorized Distributor

Click to View Pricing, Inventory, Delivery & Lifecycle Information:

[Weidmuller:](#)

[1942610000](#)