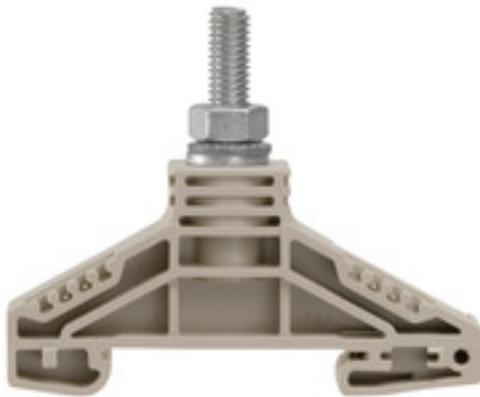


**WF 6****Weidmüller Interface GmbH & Co. KG**

Klingenbergstraße 26

D-32758 Detmold

Germany

[www.weidmueller.com](http://www.weidmueller.com)**Product image****Klippon® Connect with stud Technology**

Our stud terminals are an established, robust connection alternative for particularly harsh environments. The extensive accessories and quality workmanship ensure high productivity in planning and installation – and sustainable safety in operation..

**General ordering data**

|            |  |
|------------|--|
| Version    | Bolt-type screw terminals, Feed-through terminal, Rated cross-section: 35 mm <sup>2</sup> , Threaded stud connection |
| Order No.  | <a href="#">1780850000</a>   |
| Type       | WF 6   |
| GTIN (EAN) | 4032248219339  |
| Qty.       | 25 pc(s).  |

## WF 6

Weidmüller Interface GmbH &amp; Co. KG

Klingenbergstraße 26

D-32758 Detmold

Germany

www.weidmueller.com

## Technical data

## Dimensions and weights

|            |          |                 |            |
|------------|----------|-----------------|------------|
| Depth      | 54.5 mm  | Depth (inches)  | 2.146 inch |
| Height     | 67 mm    | Height (inches) | 2.638 inch |
| Width      | 17.8 mm  | Width (inches)  | 0.701 inch |
| Net weight | 26.494 g |                 |            |

## Temperatures

|                                  |                |                                  |        |
|----------------------------------|----------------|----------------------------------|--------|
| Storage temperature              | -25 °C...55 °C | Continuous operating temp., min. | -50 °C |
| Continuous operating temp., max. | 120 °C         |                                  |        |

## Material data

|                           |       |        |            |
|---------------------------|-------|--------|------------|
| Material                  | Wemid | Colour | dark beige |
| UL 94 flammability rating | V-0   |        |            |

## System specifications

|                                   |                       |                                     |    |
|-----------------------------------|-----------------------|-------------------------------------|----|
| Version                           | Single-stud terminals | End cover plate required            | No |
| Number of levels                  | 1                     | Number of clamping points per level | 1  |
| Levels cross-connected internally | No                    | PE connection                       | No |
| Rail                              | TS 35                 |                                     |    |

## Additional technical data

|                          |      |                             |         |
|--------------------------|------|-----------------------------|---------|
| Explosion-tested version | No   | Number of similar terminals | 1       |
| Open sides               | Open | Type of mounting            | Snap-on |

## CSA rating data

|                               |                |                               |       |
|-------------------------------|----------------|-------------------------------|-------|
| Certificate No. (CSA)         | 200039-1244019 | Current size C (CSA)          | 150 A |
| Voltage size C (CSA)          | 1000 V         | Wire cross section max. (CSA) | 2 AWG |
| Wire cross section min. (CSA) | 14 AWG         |                               |       |

## Conductors for clamping (rated connection)

|                           |                           |                                |                        |
|---------------------------|---------------------------|--------------------------------|------------------------|
| 2 x cable lugs DIN 46 234 | 2.5 to 35 mm <sup>2</sup> | 2 x cable lugs DIN 46 235      | 6...25 mm <sup>2</sup> |
| Cable lug to DIN 46234    | 2.5...35 mm <sup>2</sup>  | Cable lug to DIN 46235         | 6...25 mm <sup>2</sup> |
| Clamping range, max.      | 35 mm <sup>2</sup>        | Clamping range, min.           | 2.5 mm <sup>2</sup>    |
| Number of connections     | 1                         | Stud size for spade connection | M 6                    |
| Tightening torque, max.   | 6 Nm                      | Tightening torque, min.        | 3 Nm                   |
| Type of connection        | Threaded stud connection  |                                |                        |

## General

|      |       |
|------|-------|
| Rail | TS 35 |
|------|-------|

## WF 6

Weidmüller Interface GmbH &amp; Co. KG

Klingenbergstraße 26

D-32758 Detmold

Germany

www.weidmueller.com

## Technical data

## Rating data

|  |                    |   |         |
|--|--------------------|---|---------|
| Rated cross-section                              | 35 mm <sup>2</sup> | Rated voltage                               | 1,000 V |
| Rated DC voltage                                 | 1,000 V DC         | Voltage with epoxy resin partition plate    | 2,300 V |
| Rated current                                    | 125 A              | Current at maximum wires                    | 125 A   |
| Volume resistance according to IEC 60947-7-x     | 0.26 mΩ            | Rated impulse withstand voltage             | 8 kV    |
| Impulse voltage with epoxy resin partition plate | 12 kV              | Power loss in accordance with IEC 60947-7-x | 4 W     |
| Pollution severity                               | 3                  |   |         |

## UL rating data

|   |        |   |       |
|---|--------|---|-------|
| Certificate No. (UR)                    | E60693 | Conductor size Factory wiring max. (UR) | 2 AWG |
| Conductor size Factory wiring min. (UR) | 14 AWG | Conductor size Field wiring max. (UR)   | 2 AWG |
| Conductor size Field wiring min. (UR)   | 14 AWG | Current size C (UR)                     | 115 A |
| Voltage size C (UR)                     | 1000 V |   |       |

## Classifications

|             |             |             |             |
|-------------|-------------|-------------|-------------|
| ETIM 6.0    | EC000897    | ETIM 7.0    | EC000897    |
| ETIM 8.0    | EC000897    | ECLASS 9.0  | 27-14-11-20 |
| ECLASS 9.1  | 27-14-11-20 | ECLASS 10.0 | 27-14-11-20 |
| ECLASS 11.0 | 27-14-11-20 |             |             |

## Approvals

Approvals



ROHS

Conform

## Downloads

|   |  |
|---|--|
| Approval/Certificate/Document of Conformity | <a href="#">CB Test Certificate</a><br><a href="#">CB Certificate</a><br><a href="#">EAC certificate</a><br><a href="#">CE Declaration of Conformity</a><br><a href="#">CE Declaration of Conformity all terminals</a> |
| Engineering Data                            | <a href="#">CAD data – STEP</a>  |
| Engineering Data                            | <a href="#">EPLAN, WSCAD</a>   |
| User Documentation                          | <a href="#">StorageConditionsTerminalBlocks</a>  |
| Catalogues                                  | <a href="#">Catalogues in PDF-format</a>   |
| Brochures                                   |  |

### WF 6

**Weidmüller Interface GmbH & Co. KG**

Klingenbergstraße 26

D-32758 Detmold

Germany

[www.weidmueller.com](http://www.weidmueller.com)

## Drawings



## WF 6

Weidmüller Interface GmbH &amp; Co. KG

Klingenbergstraße 26

D-32758 Detmold

Germany

www.weidmueller.com

## Accessories

## Standard



Screwable cross-connections are easy to mount and de mount. Thanks to the big contact surface, even high currents can be transmitted with maximum contact reliability.

## General ordering data

|            |                            |  |
|------------|----------------------------|--|
| Type       | WQL 3 WF6                  | Version  |
| Order No.  | <a href="#">1780980000</a> | Bolt-type screw terminals, Cross-connector, Number of poles: 3 |
| GTIN (EAN) | 4032248241194              |  |
| Qty.       | 5 pc(s).                   |  |
| Type       | WQL 2 WF6                  | Version  |
| Order No.  | <a href="#">1780970000</a> | Bolt-type screw terminals, Cross-connector, Number of poles: 2 |
| GTIN (EAN) | 4032248219407              |  |
| Qty.       | 5 pc(s).                   |  |

## WF / WFF-Series



A partition plate is used for the optical separation of circuits or used for electrical isolation from neighbouring cross-connectors. In contrast to the end plate, the contour can be larger than the adjacent terminal blocks. However, it should not be smaller, as otherwise the required clearance and creepage distances within the application can no longer be maintained.

## General ordering data

|            |                            |  |
|------------|----------------------------|--|
| Type       | WTW WF6                    | Version  |
| Order No.  | <a href="#">1781220000</a> | Bolt-type screw terminals, Partition plate, dark beige, 3 mm   |
| GTIN (EAN) | 4032248219377              |  |
| Qty.       | 20 pc(s).                  |  |
| Type       | WTW WF6 2300               | Version  |
| Order No.  | <a href="#">1781230000</a> | Bolt-type screw terminals, Partition plate, grey, 2 mm         |
| GTIN (EAN) | 4032248241125              |  |
| Qty.       | 20 pc(s).                  |  |
| Type       | WTW WF6-WF12               | Version  |
| Order No.  | <a href="#">1781240000</a> | Bolt-type screw terminals, Partition plate, dark beige, 2.5 mm |
| GTIN (EAN) | 4032248241156              |  |
| Qty.       | 20 pc(s).                  |  |

## WF 6

Weidmüller Interface GmbH &amp; Co. KG

Klingenbergstraße 26

D-32758 Detmold

Germany

www.weidmueller.com

## Accessories

## Blank



WS markers are the perfect match for the W-series connectors. Thanks to their system compatibility, the WS tags can also be used with the I-series and the Z-series. The large marking surfaces do not only permit long character strings but also multi-line text. WS markers are ideal for labels with long, customised character strings. Thanks to the proven MultiCard format, printing with PrintJet CONNECT oder/or Plotter is possible.

- Can be fitted in strips or individually
- Markers in proven MultiCard format

**For custom printing:** Please send us a file of our labeling software M-Print PRO or M-Print PRO Online (without installation) for your labeling specifications.

## General ordering data

|            |                            |  |
|------------|----------------------------|--|
| Type       | WS 15/5 MC NE WS           | Version  |
| Order No.  | <a href="#">1609880000</a> | WS, Terminal marker, 15 x 5 mm, Pitch in mm (P): 5.00 Weidmueller, |
| GTIN (EAN) | 4008190203504              | Allen-Bradley, white   |
| Qty.       | 480 pc(s).                 |  |

## Step-down bridges



Reducing cross-connectors enable simple and fast connection of terminal blocks with different rated cross-sections.

## General ordering data

|            |                            |   |
|------------|----------------------------|---|
| Type       | WQL 3 WF6-10/2             | Version   |
| Order No.  | <a href="#">1806640000</a> | Bolt-type screw terminals, Cross-connector, Number of poles: 3        |
| GTIN (EAN) | 4032248294695              |   |
| Qty.       | 5 pc(s).                   |   |
| Type       | WQL 2 WF6-10               | Version   |
| Order No.  | <a href="#">1806620000</a> | Bolt-type screw terminals, Cross-connector, Number of poles: 2        |
| GTIN (EAN) | 4032248294732              |   |
| Qty.       | 5 pc(s).                   |   |
| Type       | WQL 4 WF8-6/3              | Version   |
| Order No.  | <a href="#">1904960000</a> | Bolt-type screw terminals, Cross-connector, For the terminals, Number |
| GTIN (EAN) | 4032248756780              | of poles: 4   |
| Qty.       | 5 pc(s).                   |   |

## WF 6

Weidmüller Interface GmbH &amp; Co. KG

Klingenbergstraße 26

D-32758 Detmold

Germany

www.weidmueller.com

## Accessories

## W-Series



Weidmüller's range of products includes end brackets that guarantee a permanent, reliable mounting on the terminal rail and prevent sliding. Versions with and without screws are available. The end brackets include marking options, also for group markers, and also a test plug holder.

## General ordering data

|            |                            |                       |
|------------|----------------------------|-----------------------|
| Type       | WEW 35/2                   | Version               |
| Order No.  | <a href="#">1061200000</a> | W-Series, End bracket |
| GTIN (EAN) | 4008190030230              |                       |
| Qty.       | 50 pc(s).                  |                       |

## DEK 5/6



## WS/ DEK

MultiMark terminal markers use an innovative composite material made from two components. The hard base contour of the marker snaps securely into the connector. The elastic surface finish makes the marker easy to mount. This specially punched material enables the strips to be stretched to accommodate the slight variations in spacing that tend to add up, especially with long terminal blocks. Another advantage: the excellent printability of the surface material guarantees durable and wear-resistant labelling. A print resolution of 300 dpi also produces a very legible script.

## Your benefits with MultiMark

- Firm hold and durable printing
- Continuous strips save installation time
- Easy mounting thanks to an innovative composite material
- Large label field for optimal legibility
- High flexibility thanks to manufacturer independence

## General ordering data

|            |                            |  |
|------------|----------------------------|--|
| Type       | DEK 5/6 MM WS              | Version  |
| Order No.  | <a href="#">2007120000</a> | Dekafix, Terminal marker, 5 x 6 mm, Weidmueller, white |
| GTIN (EAN) | 4050118392104              |  |
| Qty.       | 600 pc(s).                 |  |

## WF 6

Weidmüller Interface GmbH &amp; Co. KG

Klingenbergstraße 26

D-32758 Detmold

Germany

www.weidmueller.com

## Accessories

## Blank



The Dekafix (DEK) marker is the universal marker for all conductor and plug-in connectors as well as for electronic sub-assemblies. The system is ideal for short number sequences and covers a wide range of ready-printed markers.

Strips for fast installation in only one work step. The printing is easy to read, rich in contrast and available in various widths.

- Large range of ready-to-use markers
- Strips for fast installation
- Terminal markers, suitable for all Weidmüller cable connectors
- Available as blank MultiCard or with standard printing

**For custom printing:** Please send us a file of our labeling software M-Print PRO or M-Print PRO Online (without installation) for your labeling specifications.

## General ordering data

|            |                            |   |
|------------|----------------------------|---|
| Type       | DEK 5/6 MC NE WS           | Version   |
| Order No.  | <a href="#">1609820000</a> | Dekafix, Terminal marker, 5 x 6 mm, Pitch in mm (P): 6.00 |
| GTIN (EAN) | 4008190203436              | Weidmueller, white  |
| Qty.       | 1,000 pc(s).               |   |

## WF/WFF-Series



The additional connection enables a separate voltage tap. This can be used, for example, for the emergency power supply before the main switch or simply as an additional connection within the application.

## General ordering data

|            |                            |                                 |
|------------|----------------------------|---------------------------------|
| Type       | WZAF 35                    | Version                         |
| Order No.  | <a href="#">1070500000</a> | W-Series, Additional connection |
| GTIN (EAN) | 4008190024512              |                                 |
| Qty.       | 10 pc(s).                  |                                 |



**WF 6****Weidmüller Interface GmbH & Co. KG**

Klingenbergstraße 26

D-32758 Detmold

Germany

[www.weidmueller.com](http://www.weidmueller.com)**Accessories****Cover profiles**

Cover profiles provide protection against external impact on functional areas of the terminal blocks or in combination with our support brackets for the entire terminal strip. They provide protection against electric shock caused by accidental contact with live parts due to operation or faults.

**General ordering data**

|            |                            |  |
|------------|----------------------------|--|
| Type       | HA ADP WF6/WF10            | Version  |
| Order No.  | <a href="#">1781050000</a> | Bolt-type screw terminals, Cover profile, dark beige, 2.2 mm   |
| GTIN (EAN) | 4032248241231              |  |
| Qty.       | 10 pc(s).                  |  |
| Type       | ADP WF6/WF8                | Version  |
| Order No.  | <a href="#">1780930000</a> | Bolt-type screw terminals, Cover profile, Transparent, 1000 mm |
| GTIN (EAN) | 4032248241248              |  |
| Qty.       | 1 m                        |  |

# Mouser Electronics

Authorized Distributor

Click to View Pricing, Inventory, Delivery & Lifecycle Information:

[Weidmuller:](#)

[1780850000](#)