

HDC 32A SBU 1PG29G**Weidmüller Interface GmbH & Co. KG**

Klingenbergstraße 26

D-32758 Detmold

Germany

www.weidmueller.com

The special die-cast alloy and the multi-layered surface sealing provide complete protection for the HDC housings.

The cleverly designed interlock system is manufactured from stainless steel. This guarantees a long lifespan with high resistance to corrosion and impact.

The housing interlock system provides integrated safety. Our unique, patented spring system provides the housing interlock with a secure grip and prevents accidental opening.

The laser marking allows for easy and quick identification. Each housing is permanently labelled with a laser marking so that each product can be quickly designated and positioned.

Weidmüller RockStar® IP 65 / NEMA Type 4X housings - your first choice for industrial housings with IP 65 protection.

General ordering data

| | |
|------------|---|
| Version | HDC enclosures, Size: 7, Protection degree: IP65 (in plugged condition), Base housing, Side-locking clamp on lower side, Standard, Size of cable entries: PG 29 |
| Order No. | 1666010000 |
| Type | HDC 32A SBU 1PG29G |
| GTIN (EAN) | 4008190423049 |
| Qty. | 1 pc(s). |

HDC 32A SBU 1PG29G

Weidmüller Interface GmbH & Co. KG

Klingenbergstraße 26

D-32758 Detmold

Germany

www.weidmueller.com

Technical data

Dimensions and weights

| | | | |
|-----------------------------|-------|----------------------------|------------|
| Height | 75 mm | Height (inches) | 2.953 inch |
| Width | 68 mm | Width (inches) | 2.677 inch |
| Mounting dimension - height | 46 mm | Mounting dimension - width | 92 mm |
| Net weight | 438 g | | |

Temperatures

| | |
|-------------------|-------------------|
| Limit temperature | -40 °C ... 125 °C |
|-------------------|-------------------|

Environmental Product Compliance

| | | | |
|---------------------|--|-------------------------|--|
| REACH SVHC | Lead 7439-92-1, Potassium perfluorobutane sulfonate 29420-49-3 | | |
| Chemical resistance | Substance | Acetone | |
| | Chemical resistance | Conditionally resistant | |
| | Substance | Drilling oil | |
| | Chemical resistance | Resistant | |
| | Substance | Diesel | |
| | Chemical resistance | Resistant | |
| | Substance | Ethyl alcohol | |
| | Chemical resistance | Resistant | |
| | Substance | Transmission oil | |
| | Chemical resistance | Resistant | |
| | Substance | Hydraulic oil | |
| | Chemical resistance | Resistant | |
| | Substance | Coolant | |
| | Chemical resistance | Resistant | |
| | Substance | Petroleum benzine | |
| | Chemical resistance | Resistant | |
| | Substance | Sweat | |
| | Chemical resistance | Resistant | |
| | Substance | Premium gasoline | |
| | Chemical resistance | Conditionally resistant | |
| | Substance | Water | |
| | Chemical resistance | Resistant | |
| | Substance | UV | |
| | Chemical resistance | Unstable | |
| | Substance | Ozone | |
| | Chemical resistance | Unstable | |

Dimensions

| | | | |
|----------------------|--------------|----------------------|---------|
| Cable entry | w. threading | Height of base B1 | 5 mm |
| Height of housing B | 75 mm | Hole pitch length A2 | 92 mm |
| Total length housing | 82 mm | Width base C1 | 64.5 mm |
| Width housing C | 56 mm | | |

General data

| | | | |
|-----------------------------|-----------------------------|-----------------------|-----------------------------|
| EMC housings | No | Housing main material | diecast aluminium |
| Material of locking element | Stainless steel, rust-proof | Protection degree | IP65 (in plugged condition) |
| Surface finish | | Tightening torque | 1.2 Nm |

HDC 32A SBU 1PG29G

Weidmüller Interface GmbH & Co. KG

Klingenbergstraße 26

D-32758 Detmold

Germany

www.weidmueller.com

Technical data

Version

| | | | |
|------------------------------|----------------------------------|--------------------------------|--------------|
| BG | 7 | Cable entry | w. threading |
| Clamp version | Side-locking clamp | Colour (RAL) | RAL 7035 |
| Design | Standard | Design of housing | Base housing |
| Design of locking system | Side-locking clamp on lower side | Internal thread | PG 29 |
| Number of cable entry on top | 0 | Number of cable entry sideways | 1 |
| Sealing | NBR | Size | 7 |
| Size of cable entries | PG 29 | Suitable for ModuPlug® | No |
| Tightening torque | 1.2 Nm | Top part/bottom part/lid | lower part |
| Type | Base housing | | |

Classifications

| | | | |
|-------------|-------------|-------------|-------------|
| ETIM 6.0 | EC000437 | ETIM 7.0 | EC000437 |
| ETIM 8.0 | EC000437 | ECLASS 9.0 | 27-44-02-02 |
| ECLASS 9.1 | 27-44-02-02 | ECLASS 10.0 | 27-44-02-02 |
| ECLASS 11.0 | 27-44-02-02 | | |

Approvals

Approvals



| | |
|-----------------------|---------|
| ROHS | Conform |
| UL File Number Search | E92202 |

Downloads

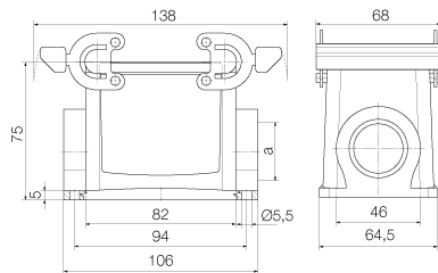
| | |
|---|--|
| Approval/Certificate/Document of Conformity | Manufacturer's declaration |
| Engineering Data | CAD data – STEP |
| Engineering Data | EPLAN, WSCAD |
| Product Change Notification | DE - HDC base housings size 16D/32A/32B DE - HDC base housings size 16D/32A/32B |
| Technical Documentation | 1666010000 HDC_32A_SBU_1PG29G_STP_Blatt__1.pdf |
| Catalogues | Catalogues in PDF-format |
| Brochures | FL FIELDWIRING EN FL FIELDWIRING EN |

HDC 32A SBU 1PG29G

Weidmüller Interface GmbH & Co. KG
Klingenbergstraße 26
D-32758 Detmold
Germany

www.weidmueller.com

Drawings



HDC 32A SBU 1PG29G

Weidmüller Interface GmbH & Co. KG

Klingenbergstraße 26

D-32758 Detmold

Germany

www.weidmueller.com

Accessories

Cover



The special die-cast alloy and the multi-layered surface sealing provide complete protection for the HDC housings.

The cleverly designed interlock system is manufactured from stainless steel. This guarantees a long lifespan with high resistance to corrosion and impact.

The housing interlock system provides integrated safety. Our unique, patented spring system provides the housing interlock with a secure grip and prevents accidental opening.

The laser marking allows for easy and quick identification. Each housing is permanently labelled with a laser marking so that each product can be quickly designated and positioned.

Weidmüller RockStar® IP 65 / NEMA Type 4X housings - your first choice for industrial housings with IP 65 protection.

General ordering data

| Type | HDC 32A DODQ 4B0 | Version |
|------------|----------------------------|--|
| Order No. | 1665920000 | HDC enclosures, Size: 7, Protection degree: IP65 (in plugged condition), Cover for lower part of housing, Side-locking clamp on lower side, Standard |
| GTIN (EAN) | 4008190422950 | |
| Qty. | 1 pc(s). | |

Hood, Cable Entry at top



The special die-cast alloy and the multi-layered surface sealing provide complete protection for the HDC housings.

The cleverly designed interlock system is manufactured from stainless steel. This guarantees a long lifespan with high resistance to corrosion and impact.

The housing interlock system provides integrated safety. Our unique, patented spring system provides the housing interlock with a secure grip and prevents accidental opening.

The laser marking allows for easy and quick identification. Each housing is permanently labelled with a laser marking so that each product can be quickly designated and positioned.

Weidmüller RockStar® IP 65 / NEMA Type 4X housings - your first choice for industrial housings with IP 65 protection.

General ordering data

| Type | HDC 32A TOBU 1PG21G | Version |
|------------|----------------------------|---|
| Order No. | 1665790000 | HDC enclosures, Size: 7, Protection degree: IP65 (in plugged condition), Cable entry from top, Plug housing, Side-locking clamp on lower side, Standard, Size of cable entries: PG 21 |
| GTIN (EAN) | 4008190422813 | |
| Qty. | 1 pc(s). | |
| Type | HDC 32A TOBU 1PG29G | Version |
| Order No. | 1665810000 | HDC enclosures, Size: 7, Protection degree: IP65 (in plugged condition), Cable entry from top, Plug housing, Side-locking clamp on lower side, Standard, Size of cable entries: PG 29 |
| GTIN (EAN) | 4008190422837 | |
| Qty. | 1 pc(s). | |

HDC 32A SBU 1PG29G

Weidmüller Interface GmbH & Co. KG

Klingenbergstraße 26

D-32758 Detmold

Germany

www.weidmueller.com

Accessories

| | | |
|------------|----------------------------|--|
| Type | HDC 32A TOBU 1M32G | Version |
| Order No. | 1787990000 | HDC enclosures, Size: 7, Protection degree: IP65 (in plugged condition), Cable entry from top, Plug housing, Side-locking clamp on lower side, Standard, Size of cable entries: M 32 |
| GTIN (EAN) | 4032248205431 | |
| Qty. | 1 pc(s). | |

Hood, Cable Entry sideways



The special die-cast alloy and the multi-layered surface sealing provide complete protection for the HDC housings.

The cleverly designed interlock system is manufactured from stainless steel. This guarantees a long lifespan with high resistance to corrosion and impact.

The housing interlock system provides integrated safety. Our unique, patented spring system provides the housing interlock with a secure grip and prevents accidental opening.

The laser marking allows for easy and quick identification. Each housing is permanently labelled with a laser marking so that each product can be quickly designated and positioned.

Weidmüller RockStar® IP 65 / NEMA Type 4X housings - your first choice for industrial housings with IP 65 protection.

General ordering data

| | | |
|------------|----------------------------|--|
| Type | HDC 32A TSBU 1M25G | Version |
| Order No. | 1787960000 | HDC enclosures, Size: 7, Protection degree: IP65 (in plugged condition), Cable entry from side, Plug housing, Side-locking clamp on lower side, Standard, Size of cable entries: M 25 |
| GTIN (EAN) | 4032248205400 | |
| Qty. | 1 pc(s). | |
| Type | HDC 32A TSBU 1PG21G | Version |
| Order No. | 1665670000 | HDC enclosures, Size: 7, Protection degree: IP65 (in plugged condition), Cable entry from side, Plug housing, Side-locking clamp on lower side, Standard, Size of cable entries: PG 21 |
| GTIN (EAN) | 4008190422691 | |
| Qty. | 1 pc(s). | |
| Type | HDC 32A TSBU 1PG29G | Version |
| Order No. | 1665690000 | HDC enclosures, Size: 7, Protection degree: IP65 (in plugged condition), Cable entry from side, Plug housing, Side-locking clamp on lower side, Standard, Size of cable entries: PG 29 |
| GTIN (EAN) | 4008190422714 | |
| Qty. | 1 pc(s). | |
| Type | HDC 32A TSBU 1M32G | Version |
| Order No. | 1787950000 | HDC enclosures, Size: 7, Protection degree: IP65 (in plugged condition), Cable entry from side, Plug housing, Side-locking clamp on lower side, Standard, Size of cable entries: M 32 |
| GTIN (EAN) | 4032248205394 | |
| Qty. | 1 pc(s). | |

Mouser Electronics

Authorized Distributor

Click to View Pricing, Inventory, Delivery & Lifecycle Information:

[Weidmuller:](#)

[1666010000](#)