

KP-M12/-240**Weidmüller Interface GmbH & Co. KG**

Klingenbergstraße 26

D-32758 Detmold

Germany

www.weidmueller.com

**The use of insulated connectors guarantees users consistent electrical connection quality in the long term.**

- Wide range of insulated and non-insulated cable lugs and connectors
- Tubular cable lugs according to current market standards (Euroseries)
- Compression cable lugs acc. to DIN 46235
- Sheet metal cable lugs acc. to DIN 46234
- Insulated ring cable lugs to DIN 46237
- Insulated pin cable lugs to DIN 46231

General ordering data

Version	cable lug, terminal end,240 mm ²
Order No.	1498410000
Type	KP-M12/-240
GTIN (EAN)	4050118307672
Qty.	20 pc(s).

KP-M12/-240

Weidmüller Interface GmbH & Co. KG
 Klingenbergstraße 26
 D-32758 Detmold
 Germany

www.weidmueller.com

Technical data

Dimensions and weights

Net weight	275 g
------------	-------

Technical data

Version	DIN series 46235, standard
---------	-------------------------------

Connectors

Conductor cross-section	240 mm ²	Connection length (l)	92 mm
Flange width (b)	42.5 mm	Hole	M 12
Identification number Cu	28 K	Inside diameter of flange (d2)	13 mm
Inside diameter of shaft (d1)	21.5 mm	Insulation	not available
Outside diameter of shaft (d3)	29 mm	Shaft length (a)	40 mm

Classifications

ETIM 6.0	EC001050	ETIM 7.0	EC001050
ETIM 8.0	EC001050	ECLASS 9.0	27-40-02-03
ECLASS 9.1	27-40-02-03	ECLASS 10.0	27-40-02-03
ECLASS 11.0	27-40-02-03	ECLASS 12.0	27-40-02-03

Approvals

ROHS	Conform
------	---------

Downloads

Engineering Data	EPLAN
Catalogues	Catalogues in PDF-format
Brochures	

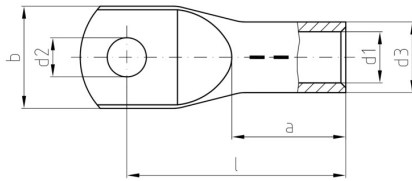
Data sheet

KP-M12/-240

Weidmüller Interface GmbH & Co. KG
Klingenbergstraße 26
D-32758 Detmold
Germany

www.weidmueller.com

Drawings



Mouser Electronics

Authorized Distributor

Click to View Pricing, Inventory, Delivery & Lifecycle Information:

[Weidmuller:](#)

[1498410000](#)