

**SFX-M 11/60-5 AL****Weidmüller Interface GmbH & Co. KG**

Klingenbergstraße 26

D-32758 Detmold

Germany

www.weidmueller.com



MetalliCards are available in aluminium or stainless steel to meet a wide range of labelling requirements. The chrome-coated aluminium tags are the inexpensive alternative for a variety of applications, and in particular, they prove themselves through the deep contrasts of their multi-colour print.

In the technologically demanding chemical and process industries, you are on the safe side when using the stainless steel MetalliCard with its outstanding resistance characteristics. Its formats cover the needs of the entire system-identification spectrum. Whether small equipment or type plates, they ensure high-quality marking processes. The MetalliCard also offers optimum installation characteristics. MetalliCards can be used universally thanks to various fixation options: bonding, riveting, with tag holders or rails, or in combination with stainless steel cable ties.

A special punching in the SFX-M allows the use of steel cable ties.

**For custom printing:** Please send us a file of our labeling software M-Print PRO or M-Print PRO Online (without installation) for your labeling specifications.

**General ordering data**

Version	MetalliCard, Conductor and cable markers, 7 - 40 mm, 60 x 11 mm, silver
Order No.	<a href="#">1422560000</a>
Type	SFX-M 11/60-5 AL
GTIN (EAN)	4050118226140
Qty.	50 pc(s).

## SFX-M 11/60-5 AL

Weidmüller Interface GmbH &amp; Co. KG

Klingenbergstraße 26

D-32758 Detmold

Germany

www.weidmueller.com

## Technical data

## Dimensions and weights

Depth	0.8 mm	Depth (inches)	0.031 inch
Height	60 mm	Height (inches)	2.362 inch
Width	11 mm	Width (inches)	0.433 inch
Net weight	1.06 g		

## Temperatures

Operating temperature range	-55...130 °C
-----------------------------	--------------

## General data

Colour	silver	Material	Chrome coated aluminium (AL)
Number of markers per combination	1 MetalliCard = Conductor and cable markers	Operating temperature range	-55...130 °C
Operating temperature range, max.	130 °C	Operating temperature range, min.	-55 °C
Recommended industries	Process, Energy	Size of labelling field	11.2 x 45 mm
Width	11 mm		

## Conductor and cable markers

Cable tie passage	Flat	Conductor O.D.	7 - 40 mm
Conductor O.D., max.	40 mm	Conductor O.D., min.	7 mm
Conductor cross-section, max.	500 mm <sup>2</sup>	Conductor cross-section, min.	16 mm <sup>2</sup>
Cross-section for connected wire	16 - 500 mm <sup>2</sup>	Suitable cable tie	Plastic

## Classifications

ETIM 6.0	EC001530	ETIM 7.0	EC001530
ETIM 8.0	EC001530	ECLASS 9.0	27-40-04-01
ECLASS 9.1	27-40-04-01	ECLASS 10.0	27-40-04-01
ECLASS 11.0	27-28-11-02		

## Approvals

ROHS	Conform
------	---------

## Downloads

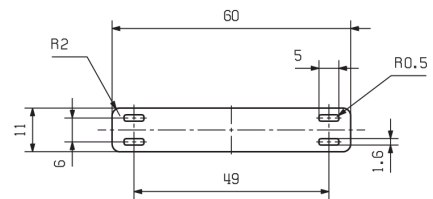
Engineering Data	<a href="#">CAD data – STEP</a>
Engineering Data	<a href="#">EPLAN, WSCAD, Zuken E3.S</a>
Catalogues	<a href="#">Catalogues in PDF-format</a>

## SFX-M 11/60-5 AL

**Weidmüller Interface GmbH & Co. KG**  
Klingenbergstraße 26  
D-32758 Detmold  
Germany

[www.weidmueller.com](http://www.weidmueller.com)

# Drawings



## SFX-M 11/60-5 AL

Weidmüller Interface GmbH &amp; Co. KG

Klingenbergstraße 26

D-32758 Detmold

Germany

www.weidmueller.com

## Accessories

## Inlay



MetalliCards are available in aluminium or stainless steel to meet a wide range of labelling requirements. The chrome-coated aluminium tags are the inexpensive alternative for a variety of applications, and in particular, they prove themselves through the deep contrasts of their multi-colour print.

In the technologically demanding chemical and process industries, you are on the safe side when using the stainless steel MetalliCard with its outstanding resistance characteristics. Its formats cover the needs of the entire system-identification spectrum. Whether small equipment or type plates, they ensure high-quality marking processes. The MetalliCard also offers optimum installation characteristics. MetalliCards can be used universally thanks to various fixation options: bonding, riveting, with tag holders or rails, or in combination with stainless steel cable ties.

A special punching in the SFX-M allows the use of steel cable ties.

**For custom printing:** Please send us a file of our labeling software M-Print PRO or M-Print PRO Online (without installation) for your labeling specifications.

## General ordering data

Type	INLAY SFX-M 11/60
Order No.	<a href="#">1341110000</a>
GTIN (EAN)	4050118145601
Qty.	1 pc(s).

## Complementary products



## General ordering data

Type	INLAY CC-M UNIVERSAL
Order No.	<a href="#">1341120000</a>
GTIN (EAN)	4050118145458
Qty.	1 pc(s).

### SFX-M 11/60-5 AL

**Weidmüller Interface GmbH & Co. KG**

Klingenbergstraße 26

D-32758 Detmold

Germany

[www.weidmueller.com](http://www.weidmueller.com)

## Accessories

Type	PRIMER CC-M
Order No.	<a href="#">2068020000</a>
GTIN (EAN)	4050118416534
Qty.	100 pc(s).

# Mouser Electronics

Authorized Distributor

Click to View Pricing, Inventory, Delivery & Lifecycle Information:

[Weidmuller:](#)

[1422560000](#)