

**CH20M BUS-PROFIL TS 35X7.5/250****Weidmüller Interface GmbH & Co. KG**

Klingenbergstraße 26

D-32758 Detmold

Germany

[www.weidmueller.com](http://www.weidmueller.com)**Product image****The integrated rail bus for the modular electronics housing system**

When supplying, connecting or distributing within modular applications, the rail bus can replace the tedious individual wiring process with a flexible and uninterrupted system-wide solution.

The system bus is securely integrated within the 35-mm standard mounting rail. The SMD-bus contact block can be reflow-soldered so that it can be completely automatically processed during the component assembly. The resistant, gold-plated contact surfaces ensure a permanent and reliable contact for all housing widths.

- **Unlimited scalability** The integrated connection solution covers all system widths: from the 6-mm slice to the 67-mm large-area housing.
- **Easy to service during installation** It's easy to replace a module, even in existing modules groups – without any influence on the neighbouring modules.
- **Universal integration** The uninterrupted system bus is securely integrated within the 35-mm standard mounting rail.
- **Maximum availability** Five fully-galvanized and partially gold-plated twin-arched contacts are used to establish a permanent contact to the rail bus. THR solder flanges ensure that the connection to the circuit board is stable.

**General ordering data**

|            |   |
|------------|---|
| Version    | OMNIMATE Housing - series CH20M, Length: 250 mm, Width: 25.1 mm |
| Order No.  | <a href="#">1248150000</a>                                      |
| Type       | CH20M BUS-PROFIL TS 35X7.5/250                                  |
| GTIN (EAN) | 4050118053296   |
| Qty.       | 10 pc(s).   |

## CH20M BUS-PROFIL TS 35X7.5/250

Weidmüller Interface GmbH &amp; Co. KG

Klingenbergstraße 26

D-32758 Detmold

Germany

www.weidmueller.com

## Technical data

## Dimensions and weights

|            |         |                 |            |
|------------|---------|-----------------|------------|
| Height     | 6.2 mm  | Height (inches) | 0.244 inch |
| Width      | 25.1 mm | Width (inches)  | 0.988 inch |
| Length     | 250 mm  | Length (inches) | 9.842 inch |
| Net weight | 17.4 g  |                 |            |

## Material data

|                                  |                 |                           |       |
|----------------------------------|-----------------|---------------------------|-------|
| Insulating material              | PA 66           | Colour                    | black |
| Colour chart (similar)           | RAL 9011        | Insulating material group | II    |
| Comparative Tracking Index (CTI) | 400 ≤ CTI < 600 | UL 94 flammability rating | V-0   |

## General data

|        |             |                        |          |
|--------|-------------|------------------------|----------|
| Colour | black       | Colour chart (similar) | RAL 9011 |
| Rail   | TS 35 x 7.5 |                        |          |

## Material data

|                                  |                 |                           |       |
|----------------------------------|-----------------|---------------------------|-------|
| Comparative Tracking Index (CTI) | 400 ≤ CTI < 600 | Insulating material       | PA 66 |
| Insulating material group        | II              | UL 94 flammability rating | V-0   |

## Classifications

|             |             |             |             |
|-------------|-------------|-------------|-------------|
| ETIM 6.0    | EC001031    | ETIM 7.0    | EC001031    |
| ETIM 8.0    | EC001031    | ECLASS 9.0  | 27-18-27-90 |
| ECLASS 9.1  | 27-18-27-90 | ECLASS 10.0 | 27-18-27-92 |
| ECLASS 11.0 | 27-18-27-92 |             |             |

## Approvals

Approvals



ROHS Conform

## Downloads

|   |   |
|---|---|
| Approval/Certificate/Document of Conformity | <a href="#">Certification DNV GL</a>  |
| Engineering Data                            | <a href="#">CAD data – STEP</a>   |
| Engineering Data                            | <a href="#">EPLAN</a>   |
| Catalogues                                  | <a href="#">Catalogues in PDF-format</a>  |
| Brochures                                   | <a href="#">FL ANALO.SIGN.CONV. EN</a><br><a href="#">MB DEVICE MANUF. EN</a><br><a href="#">FL MACHINE SAFETY EN</a><br><a href="#">FL 72H SAMPLE SER EN</a><br><a href="#">PO OMNIMATE EN</a><br><a href="#">FL 72H SAMPLE SER EN</a><br><a href="#">PO OMNIMATE EN</a> |

## CH20M BUS-PROFIL TS 35X7.5/250

Weidmüller Interface GmbH & Co. KG  
Klingenbergstraße 26  
D-32758 Detmold  
Germany

www.weidmueller.com

## Accessories

## CH20M BUS - Bus printed circuit board



### The integrated rail bus for the modular electronics housing system

When supplying, connecting or distributing within modular applications, the rail bus can replace the tedious individual wiring process with a flexible and uninterrupted system-wide solution.

The system bus is securely integrated within the 35-mm standard mounting rail. The SMD-bus contact block can be reflow-soldered so that it can be completely automatically processed during the component assembly. The resistant, gold-plated contact surfaces ensure a permanent and reliable contact for all housing widths.

- **Unlimited scalability** The integrated connection solution covers all system widths: from the 6-mm slice to the 67-mm large-area housing.
- **Easy to service during installation** It's easy to replace a module, even in existing modules groups – without any influence on the neighbouring modules.
- **Universal integration** The uninterrupted system bus is securely integrated within the 35-mm standard mounting rail.
- **Maximum availability** Five fully-galvanized and partially gold-plated twin-arched contacts are used to establish a permanent contact to the rail bus. THR solder flanges ensure that the connection to the circuit board is stable.

## General ordering data

|            |                            |  |
|------------|----------------------------|--|
| Type       | CH20M BUS 4.50/05 AU/250   | Version  |
| Order No.  | <a href="#">1248220000</a> | OMNIMATE Housing - series CH20M, Length: 250 mm, Width: 21.8 |
| GTIN (EAN) | 4050118053234              | mm   |
| Qty.       | 10 pc(s).                  |  |

## CH20M BUS-PROFIL TS 35X7.5/250

Weidmüller Interface GmbH & Co. KG  
Klingenbergstraße 26  
D-32758 Detmold  
Germany

www.weidmueller.com

## Accessories

## CH20M BUS-AP - Bus insert profil endplates



### The integrated rail bus for the modular electronics housing system

When supplying, connecting or distributing within modular applications, the rail bus can replace the tedious individual wiring process with a flexible and uninterrupted system-wide solution.

The system bus is securely integrated within the 35-mm standard mounting rail. The SMD-bus contact block can be reflow-soldered so that it can be completely automatically processed during the component assembly. The resistant, gold-plated contact surfaces ensure a permanent and reliable contact for all housing widths.

- **Unlimited scalability** The integrated connection solution covers all system widths: from the 6-mm slice to the 67-mm large-area housing.
- **Easy to service during installation** It's easy to replace a module, even in existing modules groups – without any influence on the neighbouring modules.
- **Universal integration** The uninterrupted system bus is securely integrated within the 35-mm standard mounting rail.
- **Maximum availability** Five fully-galvanized and partially gold-plated twin-arched contacts are used to establish a permanent contact to the rail bus. THR solder flanges ensure that the connection to the circuit board is stable.

### General ordering data

|            |                             |  |
|------------|-----------------------------|--|
| Type       | CH20M BUS-AP RE TS 35X7 ... | Version  |
| Order No.  | <a href="#">1193170000</a>  | OMNIMATE Housing - series CH20M, Length: 40.5 mm, Width: 5.1 |
| GTIN (EAN) | 4032248987924               | mm   |
| Qty.       | 50 pc(s).                   |  |
| Type       | CH20M BUS-AP LI TS 35X7 ... | Version  |
| Order No.  | <a href="#">1193160000</a>  | OMNIMATE Housing - series CH20M, Length: 40.5 mm, Width: 5.1 |
| GTIN (EAN) | 4032248987771               | mm   |
| Qty.       | 50 pc(s).                   |  |

## CH20M BUS-PROFIL TS 35X7.5/250

**Weidmüller Interface GmbH & Co. KG**  
 Klingenbergstraße 26  
 D-32758 Detmold  
 Germany

www.weidmueller.com

## Accessories

## Bus contact block - Middle solder flange



### The integrated rail bus for the modular electronics housing system

When supplying, connecting or distributing within modular applications, the rail bus can replace the tedious individual wiring process with a flexible and uninterrupted system-wide solution.

The system bus is securely integrated within the 35-mm standard mounting rail. The SMD-bus contact block can be reflow-soldered so that it can be completely automatically processed during the component assembly. The resistant, gold-plated contact surfaces ensure a permanent and reliable contact for all housing widths.

- **Unlimited scalability** The integrated connection solution covers all system widths: from the 6-mm slice to the 67-mm large-area housing.
- **Easy to service during installation** It's easy to replace a module, even in existing modules groups – without any influence on the neighbouring modules.
- **Universal integration** The uninterrupted system bus is securely integrated within the 35-mm standard mounting rail.
- **Maximum availability** Five fully-galvanized and partially gold-plated twin-arched contacts are used to establish a permanent contact to the rail bus. THR solder flanges ensure that the connection to the circuit board is stable.

## General ordering data

| Type       | SR-SMD 4.50/05/90LFM 3. ... | Version  | Product data | Packaging |
|------------|-----------------------------|--|--------------|-----------|
| Order No.  | <a href="#">1155870000</a>  | PCB plug-in connector, Bus-contact block for CH20M12-67, Middle    | UL:          | Box       |
| GTIN (EAN) | 4032248942510               | solder flange, THT/THR solder connection, Number of poles: 5, 180° |              |           |
| Qty.       | 78 pc(s).                   | Solder pin length (l): 3.2 mm, Gold-plated, black                  |              |           |
| Type       | SR-SMD 4.50/05/90LFM 3. ... | Version  | Product data | Packaging |
| Order No.  | <a href="#">1155880000</a>  | PCB plug-in connector, Bus-contact block for CH20M12-67, Middle    | UL:          | Tape      |
| GTIN (EAN) | 4032248942305               | solder flange, THT/THR solder connection, Number of poles: 5, 180° |              |           |
| Qty.       | 300 pc(s).                  | Solder pin length (l): 3.2 mm, Gold-plated, black                  |              |           |

## CH20M BUS-PROFIL TS 35X7.5/250

Weidmüller Interface GmbH & Co. KG  
Klingenbergstraße 26  
D-32758 Detmold  
Germany

www.weidmueller.com

## Accessories

## Bus contact block - Solder flange



### The integrated rail bus for the modular electronics housing system

When supplying, connecting or distributing within modular applications, the rail bus can replace the tedious individual wiring process with a flexible and uninterrupted system-wide solution.

The system bus is securely integrated within the 35-mm standard mounting rail. The SMD-bus contact block can be reflow-soldered so that it can be completely automatically processed during the component assembly. The resistant, gold-plated contact surfaces ensure a permanent and reliable contact for all housing widths.

- **Unlimited scalability** The integrated connection solution covers all system widths: from the 6-mm slice to the 67-mm large-area housing.
- **Easy to service during installation** It's easy to replace a module, even in existing modules groups – without any influence on the neighbouring modules.
- **Universal integration** The uninterrupted system bus is securely integrated within the 35-mm standard mounting rail.
- **Maximum availability** Five fully-galvanized and partially gold-plated twin-arched contacts are used to establish a permanent contact to the rail bus. THR solder flanges ensure that the connection to the circuit board is stable.

## General ordering data

| Type       | SR-SMD 4.50/05/90LF 1.5 ... | Version   | Product data | Packaging |
|------------|-----------------------------|---|--------------|-----------|
| Order No.  | <a href="#">1155890000</a>  | PCB plug-in connector, Bus-contact block for CH20M12-67, Solder     | UL:          | Box       |
| GTIN (EAN) | 4032248942527               | flange, THT/THR solder connection, Number of poles: 5, 180°, Solder |              |           |
| Qty.       | 78 pc(s).                   | pin length (l): 1.5 mm, Gold-plated, black                          |              |           |
| Type       | SR-SMD 4.50/05/90LF 1.5 ... | Version   | Product data | Packaging |
| Order No.  | <a href="#">1155900000</a>  | PCB plug-in connector, Bus-contact block for CH20M12-67, Solder     | UL:          | Tape      |
| GTIN (EAN) | 4032248942381               | flange, THT/THR solder connection, Number of poles: 5, 180°, Solder |              |           |
| Qty.       | 300 pc(s).                  | pin length (l): 1.5 mm, Gold-plated, black                          |              |           |

## CH20M BUS-PROFIL TS 35X7.5/250

Weidmüller Interface GmbH &amp; Co. KG

Klingenbergstraße 26

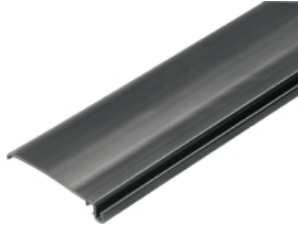
D-32758 Detmold

Germany

www.weidmueller.com

## Accessories

## CH20M BUS-ADP - Bus insert profil cover

**The integrated rail bus for the modular electronics housing system**

When supplying, connecting or distributing within modular applications, the rail bus can replace the tedious individual wiring process with a flexible and uninterrupted system-wide solution.

The system bus is securely integrated within the 35-mm standard mounting rail. The SMD-bus contact block can be reflow-soldered so that it can be completely automatically processed during the component assembly. The resistant, gold-plated contact surfaces ensure a permanent and reliable contact for all housing widths.

- **Unlimited scalability** The integrated connection solution covers all system widths: from the 6-mm slice to the 67-mm large-area housing.
- **Easy to service during installation** It's easy to replace a module, even in existing modules groups – without any influence on the neighbouring modules.
- **Universal integration** The uninterrupted system bus is securely integrated within the 35-mm standard mounting rail.
- **Maximum availability** Five fully-galvanized and partially gold-plated twin-arched contacts are used to establish a permanent contact to the rail bus. THR solder flanges ensure that the connection to the circuit board is stable.

**General ordering data**

|            |                            |  |
|------------|----------------------------|--|
| Type       | CH20M BUS-ADP TS 35/250    | Version  |
| Order No.  | <a href="#">1248250000</a> | OMNIMATE Housing - series CH20M, Length: 250 mm, Width: 39.5 |
| GTIN (EAN) | 4050118053203              | mm   |
| Qty.       | 10 pc(s).                  |  |

# Mouser Electronics

Authorized Distributor

Click to View Pricing, Inventory, Delivery & Lifecycle Information:

[Weidmuller:](#)

[1248150000](#)