

# preci-dip

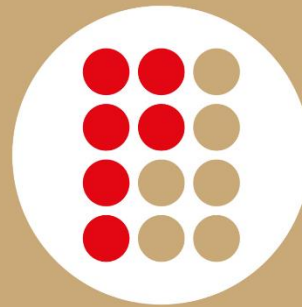
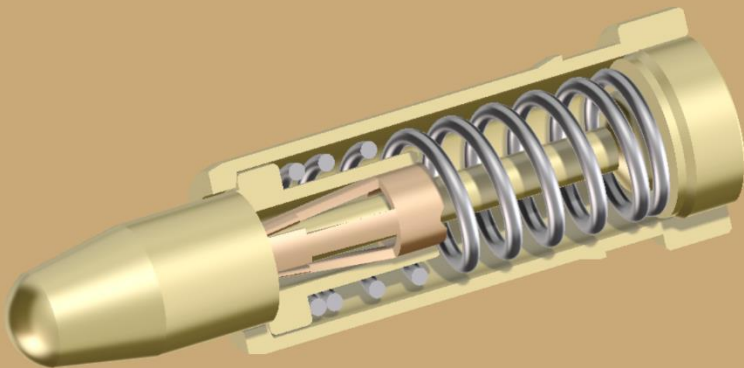
swiss world connects



precipreci

# Spring Loaded Contacts “Clip Technology”

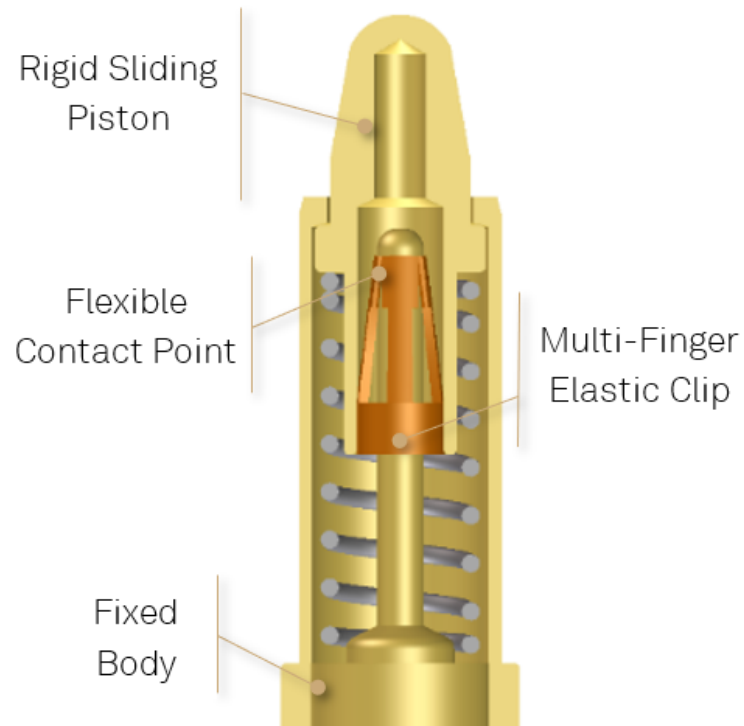
Precise, Reliable, And Cost Effective  
Standard Solutions



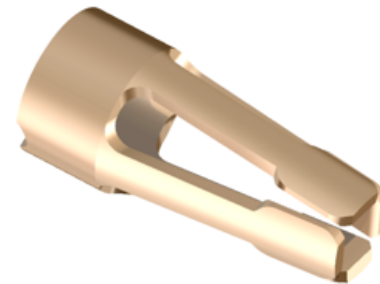
precipreci

## PRECI-DIP Unique Clip Technology In Spring Loaded Contacts

With many years of experience in Spring Loaded Contact manufacturing, PRECI-DIP has developed a patented design with an integrated multi-finger clip, which establishes high-reliability and electrical continuity between body and piston. This solution ensures low, stable electrical resistance without micro-discontinuities, even when the piston is moving or exposed to intensive shocks and vibrations.



A CLIP establishes a reliable and efficient connection between the body and piston.



Compliant to:

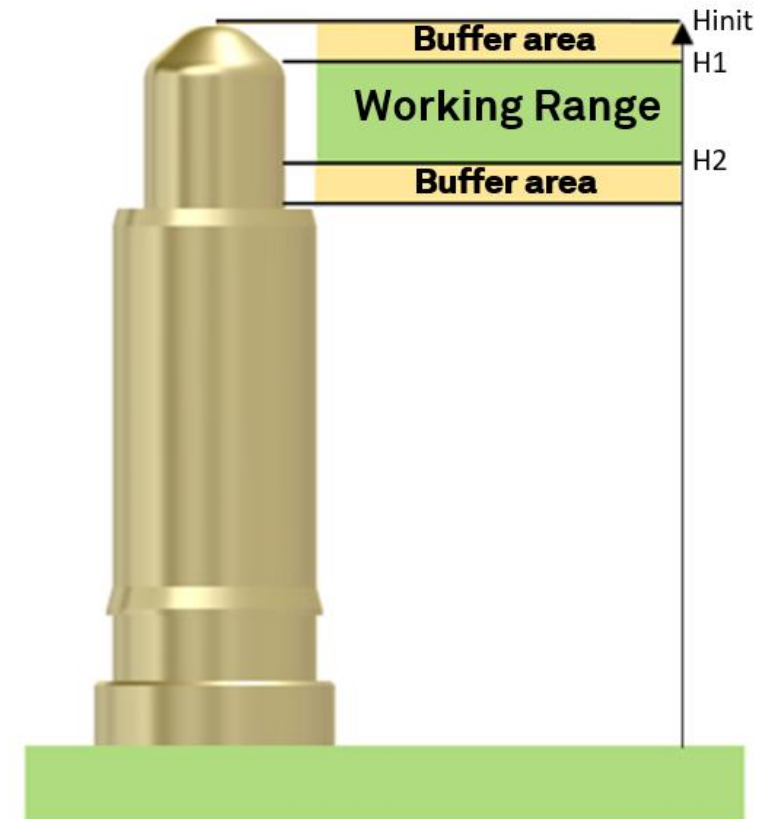
- Shock and vibration up to 2000Hz
- Current up to 25A

## Key Characteristics

### Spring Loaded Contacts

Spring Loaded Contacts are used to make reliable connections where there are large tolerances between the two mating surfaces. There are three key characteristics: Working Range, Height, and Operating Force:

- The Working Range is equal to the tolerance present between the two mating surfaces, a standard working range is 1.4 mm (.055").
- The Height of a Spring Loaded Contact is a little bit bigger than the maximum distance between the two mating surfaces, to have a buffer area to guarantee operational contact in all cases.
- The Operating Force must be larger than 0.5N to guarantee the reliability of the connection.



# SPRING-LOADED-CONTACTS



preci-dip

## Series 0900-CLIP

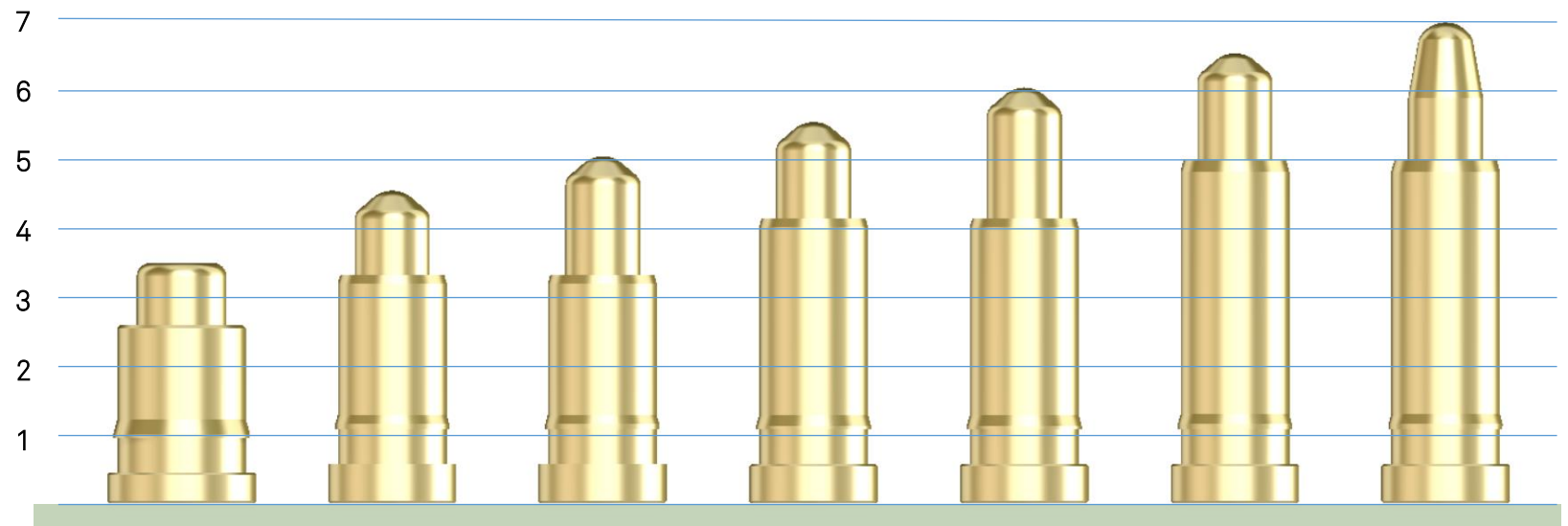
SMT Spring-Loaded Pins full range using CLIP Technology, High Reliability, High Performances, Top Quality

### Product details :

- Rated current 5A with 30°C of temperature elevation
- Dynamic Contact Resistance: 20 mΩ
- Durability : 20'000 cycles

*\*Please contact Preci-Dip for specific technical details and when higher-performance is required*

90637-AS	0900-1-CLIP	0900-2-CLIP	0900-3-CLIP	0900-4-CLIP	0907-0-CLIP	0907-1-CLIP
Initial length: 3.50mm Initial force: 0.60N	Initial length: 4.55mm Initial force: 0.35N	Initial length: 5.05mm Initial force: 0.40N	Initial length: 5.55mm Initial force: 0.40N	Initial length: 6.05mm Initial force: 0.50N	Initial length: 6.55mm Initial force: 0.50N	Initial length: 7.00 mm Initial force: 0.50N
Working range: 3.33 – 2.7	Working range: 4.35 – 3.75	Working range: 4.85 – 4.00	Working range: 5.35 – 4.25	Working range: 5.80 – 4.60	Working range: 6.35 – 5.15	Working range: 6.85 – 5.45
Ø Ext. 2,12mm	Ø Ext. 1.83mm	Ø Ext. 1.83mm	Ø Ext. 1.83mm	Ø Ext. 1.83mm	Ø Ext. 1.83mm	Ø Ext. 1.83mm
	Available in T+R	Available in T+R	Available in T+R	Available in T+R	Available in T+R	Available in T+R
<a href="#">See drawing</a>	<a href="#">See drawing</a>	<a href="#">See drawing</a>	<a href="#">See drawing</a>	<a href="#">See drawing</a>	<a href="#">See drawing</a>	<a href="#">See drawing</a>



# SPRING-LOADED-CONTACTS



## Series 0900-CLIP

SMT Spring-Loaded Pins full range using CLIP Technology, High Reliability, High Performances, Top Quality

### Product details :

- Rated current 5A with 30°C of temperature elevation
- Dynamic Contact Resistance: 20 mΩ
- Durability : 20'000 cycles

*\* Please contact Preci-Dip for specific technical details and when higher-performance is required*

0907-2-CLIP	0907-3-CLIP	0907-4-CLIP	0907-5-CLIP	0907-6-CLIP	0907-7-CLIP	0907-8-CLIP	0907-9-CLIP
Initial length: 7.55 mm Initial force: 0.60N	Initial length: 8,05mm Initial force: 0.60N	Initial length: 8,55mm Initial force: 0.35N	Initial length: 9,05mm Initial force: 0.40N	Initial length: 9.55mm Initial force: 0.40N	Initial length: 10,05mm Initial force: 0.50N	Initial length: 10,55mm Initial force: 0.35N	Initial length: 11,05 mm Initial force: 0.5N
Working range: 7,35 – 5,95	Working range: 7,85 – 6,45	Working range: 8,35 – 6,95	Working rang: 8,85 – 7,65 (0.9N)	Working rang: 9,35 – 7,95 (1.0N)	Working rang: 9,85 – 8,45	Working rang: 10,35 – 8,95	Working rang: 10,85 – 9,45
Ø Ext. 1.83mm	Ø Ext. 1,83mm	Ø Ext. 1.83mm	Ø Ext. 1.83mm	Ø Ext. 1.83mm	Ø Ext. 1.83mm	Ø Ext. 1.83mm	Ø Ext. 1.83mm
Available in T+R	Available in T+R	Available in T+R	Available in T+R	Available in T+R	Available in T+R		
<a href="#">See drawing</a>	<a href="#">See drawing</a>	<a href="#">See drawing</a>	<a href="#">See drawing</a>	<a href="#">See drawing</a>	<a href="#">See drawing</a>	<a href="#">See drawing</a>	<a href="#">See drawing</a>



# SPRING-LOADED-CONTACTS



preci-dip

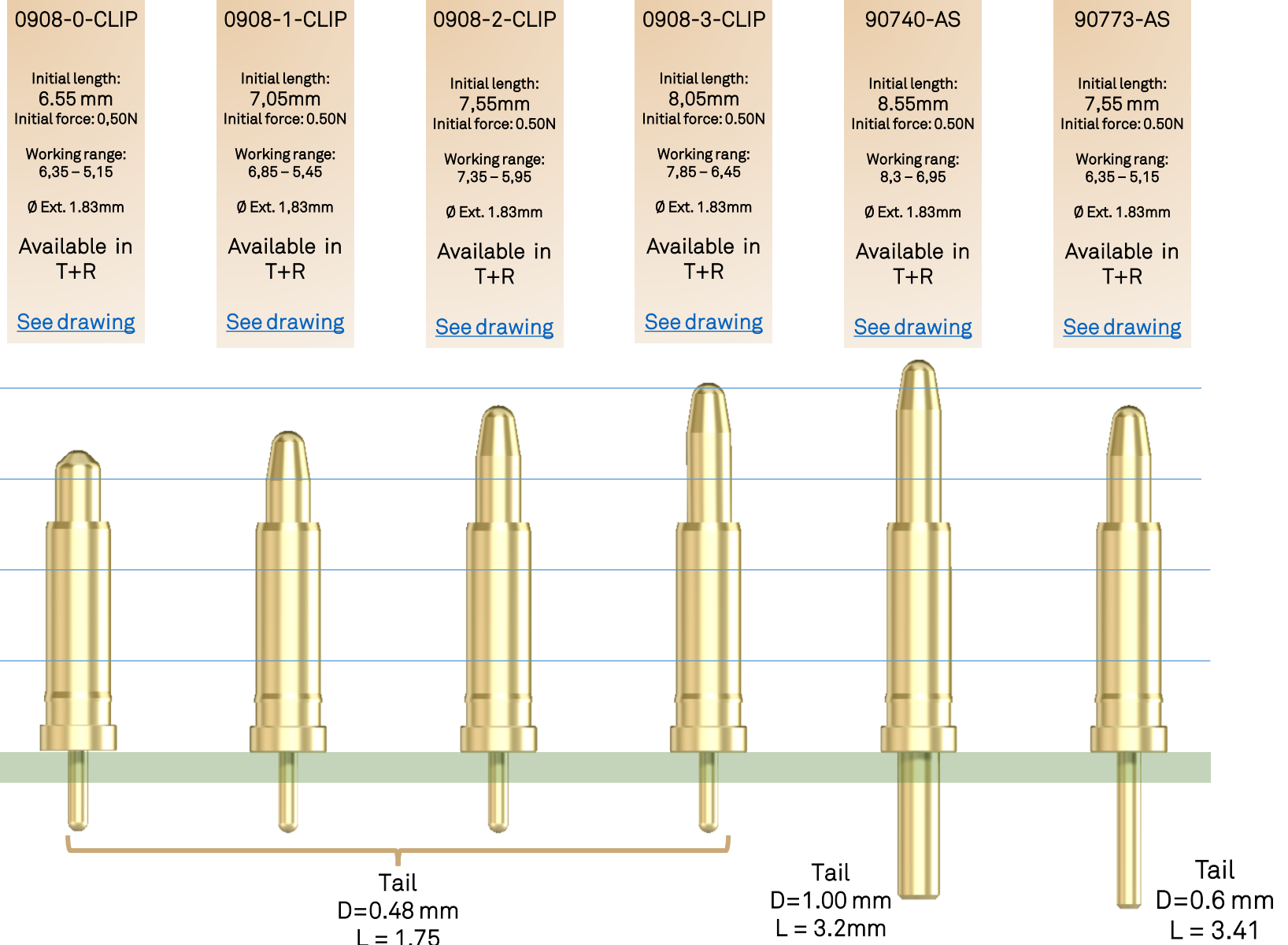
## Series 0900-CLIP

THT Spring-Loaded Pins full range using CLIP Technology, High Reliability, High Performances, Top Quality

### Product details :

- Rated current 5A with 30°C of temperature elevation
- Dynamic Contact Resistance: 20 mΩ
- Durability : 20'000 cycles

*\* Please contact Preci-Dip for specific technical details and when higher-performance is required*



# SPRING-LOADED-CONTACTS



preci-dip

## Series 0900-CLIP

THT Spring-Loaded Pins full range using CLIP Technology, High Reliability, High Performances, Top Quality

### Product details :

- Rated current 5A with 30°C of temperature elevation
- Dynamic Contact Resistance: 20 mΩ
- Durability : 20'000 cycles

*\* Please contact Preci-Dip for specific technical details and when higher-performance is required*

#### 90629-AS

Total length :  
7.46mm  
Board distance :  
5.76mm

Initial force: 0.46N

Working range:  
5,56 – 4,36

Ø Ext. 3,0 mm

Available in  
T+R

[See drawing](#)

#### 90625-AS

Total Length:  
7.76 mm  
Board distance :  
6.06mm

Initial force: 0.46N

Working range:  
7,56 – 6,06

Ø Ext. 3,0 mm

Available in  
T+R

[See drawing](#)

#### 90708-AS

Total length :  
5.5 mm  
Board distance :  
4.3 mm

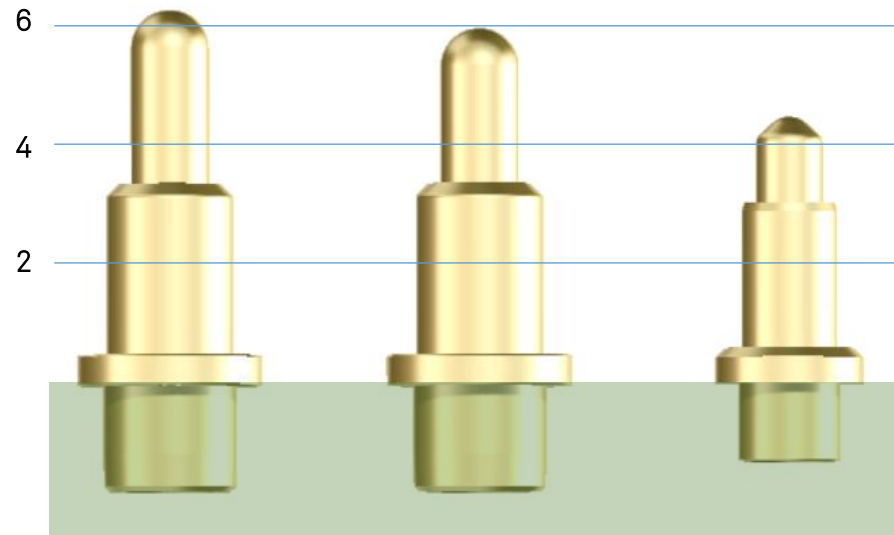
Initial force: 0.50N

Working range:  
4,15 – 3,05

Ø Ext. 2,4 mm

Available in  
T+R

[See drawing](#)





# SPRING-LOADED-CONTACTS

## Series 0900-CLIP

Spring-Loaded Pins full range using CLIP Technology, High Reliability, High Performances, Top Quality

90679-AS

Initial length:  
9,7 mm  
Initial force: 0,60N

Working range:  
9,45 – 7,45 mm

Ø Ext. 2,15 mm

[See drawing](#)

90736-AS

Initial length:  
8,7 mm  
Initial force: 1,0N

Working range:  
8,50 – 6,70 mm

Ø Ext. 1,83mm

[See drawing](#)

90691-AS

Initial length:  
7,23mm  
Initial force: 0.50N

Working range:  
7,1 – 5,4 mm

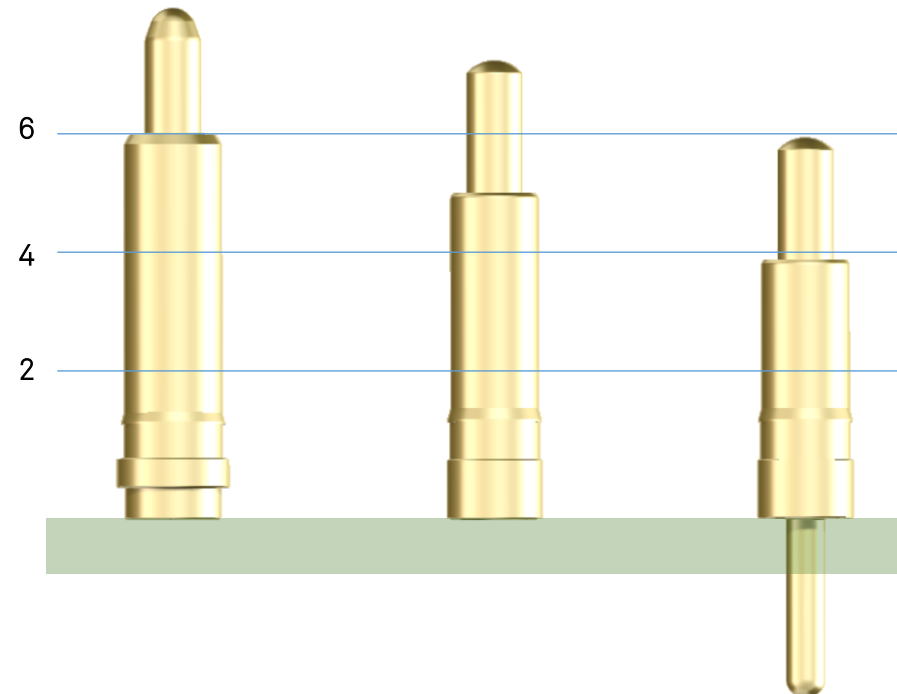
Ø Ext. 1.83mm

[See drawing](#)

## Product details :

- Rated current 5A with 30°C of temperature elevation
- Dynamic Contact Resistance: 20 mΩ
- Durability : 20'000 cycles

*\* Please contact Preci-Dip for specific technical details and when higher-performance is required*



# SPRING-LOADED-CONTACTS



preci-dip

## Series POWER-CLIP

SMT Spring-Loaded Pins full range  
using CLIP Technology, High Reliability,  
High Performances, Top Quality

### Product details :

- Rated current up to 40 Amps.
- Durability : 20'000 cycles

*\*Please contact Preci-Dip for specific technical  
details and when higher-performance is required*

### 90738-AS 12 Amps

Board distance  
12,85 mm  
Initial force: 2,1 N

Working range:  
12,1 – 9,97 mm

Ø Ext. 3,5 mm

[See drawing](#)

### 90784-AS 20 Amps

Board distance  
16,27 mm  
Initial force: 2,1 N

Working range:  
15,7-14,37 mm

Ø Ext. 5,0 mm

[See drawing](#)

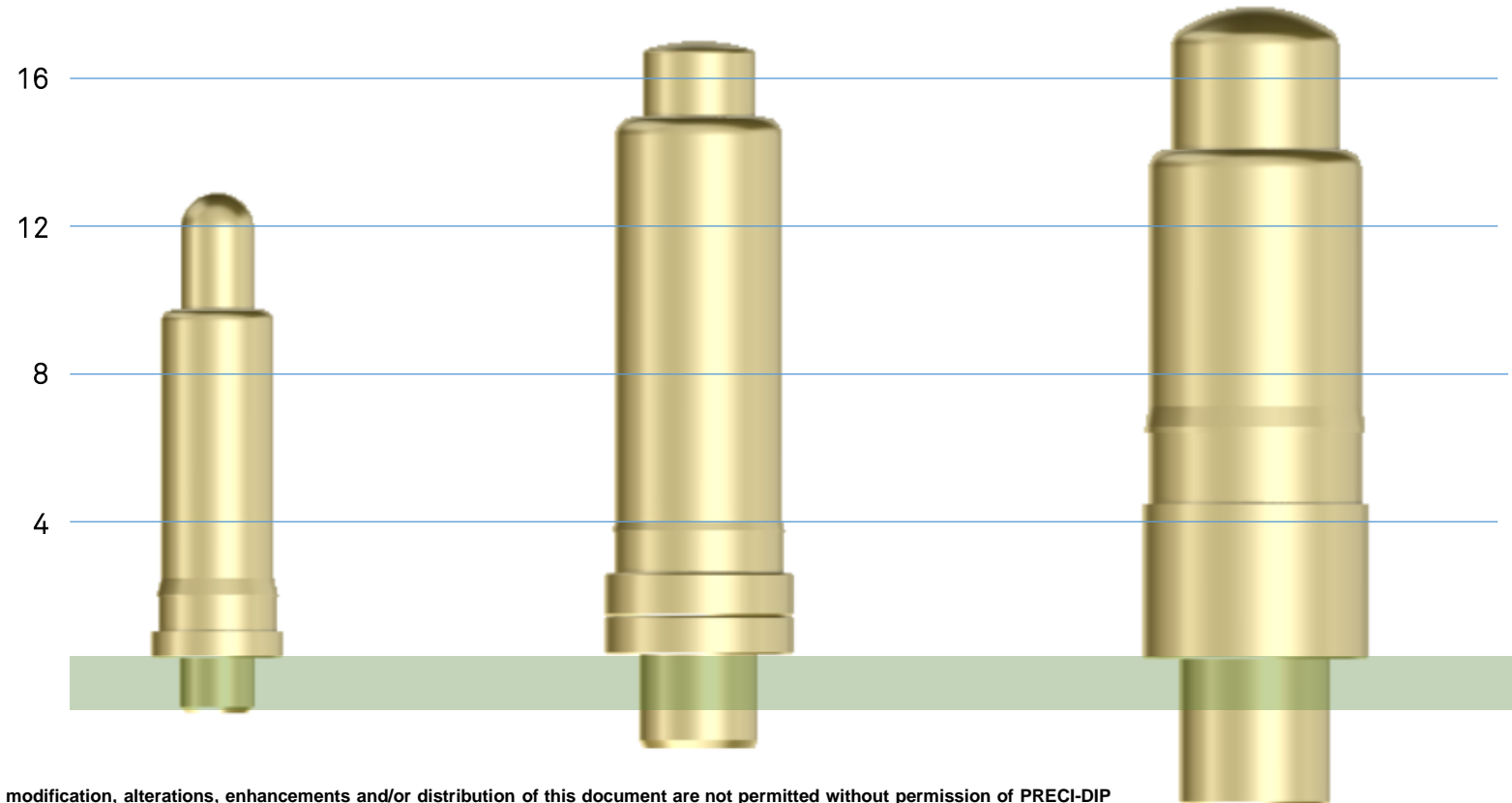
### 90795-AS 40 Amps

Board distance  
17,87 mm  
Initial force: 4,7 N

Working range:  
17,1 – 13,8

Ø Ext. 6,0 mm

[See drawing](#)



## PRECI-DIP Connection Technology

Custom design is our main strength, and your advantage when your ideas need a development partner. Vast experience with countless standard products and more than 20,000 references. Everything under one roof worldwide: We master all key processes in-house, from raw materials to finished goods.

As a global company we comply with internationally recognized certifications, including ML-STD-790, ISO 9001, Aviasecure Cert, IATF 16949, ISO 14001, EN AS JIQS 9100, UL (E174442), Renewable Energy Certification and the Certificate Act-Energy Efficiency and Climate Protection, just to name a few.



### **PRECI-DIP SA**

Rue Saint-Henri 11 P.O : Box 834 CH-2800

Delémont,  
Switzerland

T +41 32 421 04 00

Contact us for more information:

[sales@precidip.com](mailto:sales@precidip.com)

### **PRECI-DIP LLC**

225 Oracal Parkway Ellabell

GA 31308

USA

T +1 912 851 0225

Contact us for more information:

[salesusa@precidip.com](mailto:salesusa@precidip.com)

### **PRECI-DIP Connector Shanghai**

4th floor, Building# 3 No. 58 Wenxiangdong

Road, Songjiang district

Shanghai, China, PC 201613

T +86 21 60291752

Contact us for more information:

[sales@precidip.com](mailto:sales@precidip.com)

# Mouser Electronics

Authorized Distributor

Click to View Pricing, Inventory, Delivery & Lifecycle Information:

[Preci-dip:](#)

[0908-1-CLIP-02](#) [0908-2-CLIP-02](#) [0908-3-CLIP-02](#)