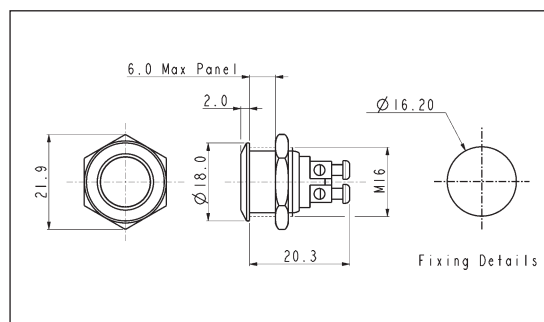


Stainless Steel - Momentary

FLUSH PROFILE


MP0042/1

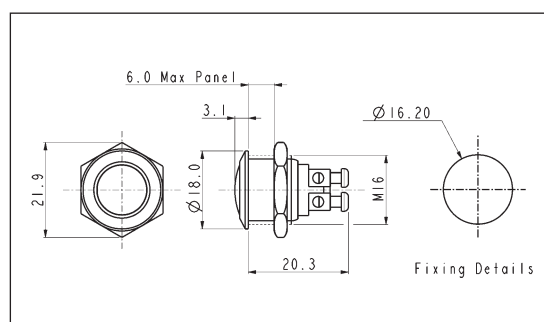
- 18mm bezel diameter
- 16mm panel hole
- S.P. Push to make
- Polished finish
- 2A, 48Vdc



DOMED PROFILE


MP0042/2

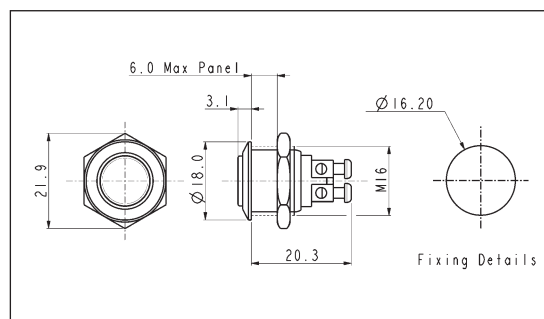
- 18mm bezel diameter
- 16mm panel hole
- S.P. Push to make
- Polished finish
- 2A, 48Vdc



PROMINENT BUTTON


MP0042/3

- 18mm bezel diameter
- 16mm panel hole
- S.P. Push to make
- Polished finish
- 2A, 48Vdc



| Specification | MP0042/1 | MP0042/2 | MP0042/3 |
|-------------------------|-------------------------------------|-------------------------------------|-------------------------------------|
| Terminations: | Screw Terminals | Screw Terminals | Screw Terminals |
| Switching: | S.P. Push to Make | S.P. Push to Make | S.P. Push to Make |
| Max. Rating: | 2A, 48Vdc | 2A, 48Vdc | 2A, 48Vdc |
| Contact Resistance: | 50mΩ at 1A, 2V | 50mΩ at 1A, 2V | 50mΩ at 1A, 2V |
| Insulation Resistance: | >10 ³ MΩ @ 500Vdc | >10 ³ MΩ @ 500Vdc | >10 ³ MΩ @ 500Vdc |
| Dielectric Strength: | >2.0kVac | >2.0kVac | >2.0kVac |
| Operating Temp. Range: | -20°C to +55°C | -20°C to +55°C | -20°C to +55°C |
| Operations | | | |
| Mechanical: | 1,000,000 (min) | 1,000,000 (min) | 1,000,000 (min) |
| Electrical: | 100,000 (min) | 100,000 (min) | 100,000 (min) |
| Rear Nut Fixing Torque: | 12Nm | 12Nm | 12Nm |
| Materials | | | |
| Mouldings: | Nylon | Nylon | Nylon |
| Tags/Terminations: | Brass, Silver Plated | Brass, Silver Plated | Brass, Silver Plated |
| Switch Body & Button: | Stainless Steel (Polished) | Stainless Steel (Polished) | Stainless Steel (Polished) |
| Contacts: | Silver | Silver | Silver |
| Variants: | Gold Plated Brass version available | Gold Plated Brass version available | Gold Plated Brass version available |
| RoHS | Compliant | Compliant | Compliant |

Mouser Electronics

Authorized Distributor

Click to View Pricing, Inventory, Delivery & Lifecycle Information:

Bulgin:

[MP0042/1](#) [MP0042/3](#)