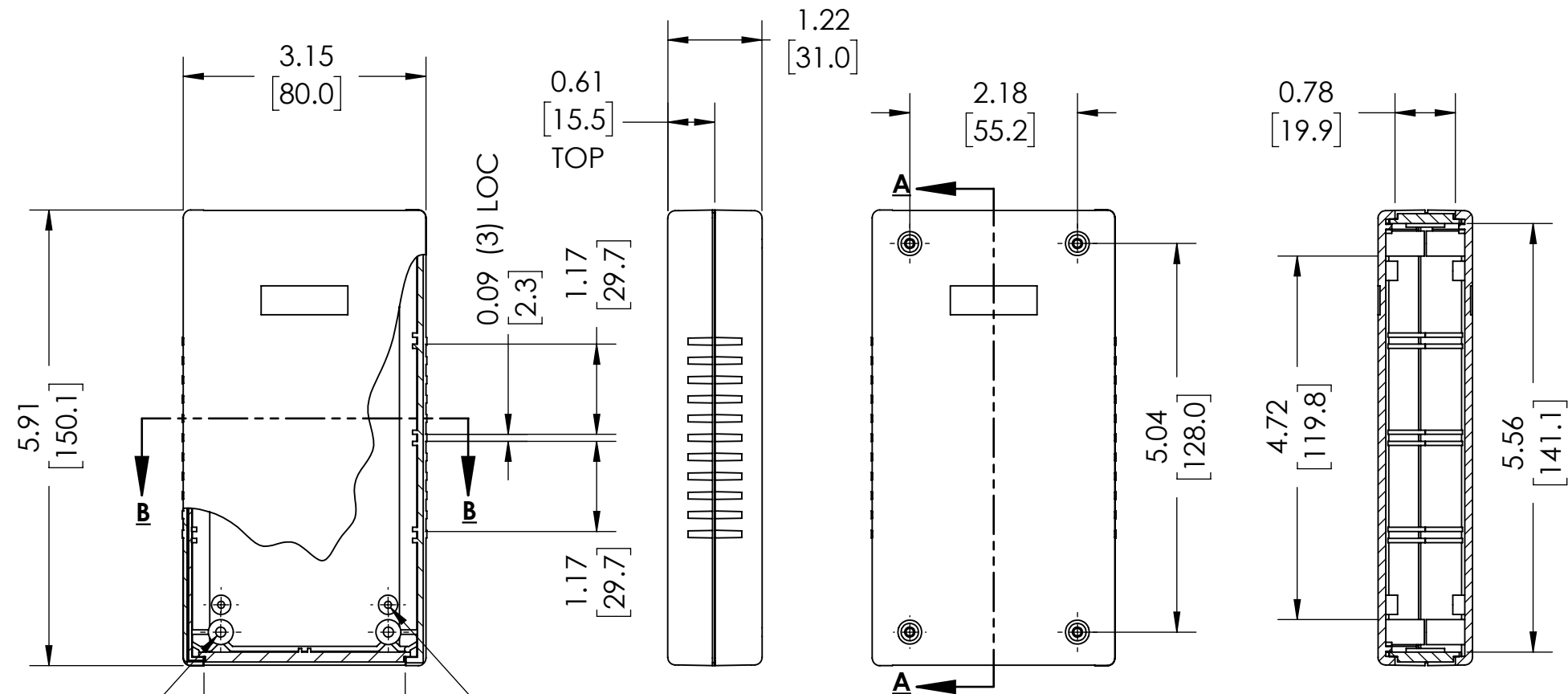
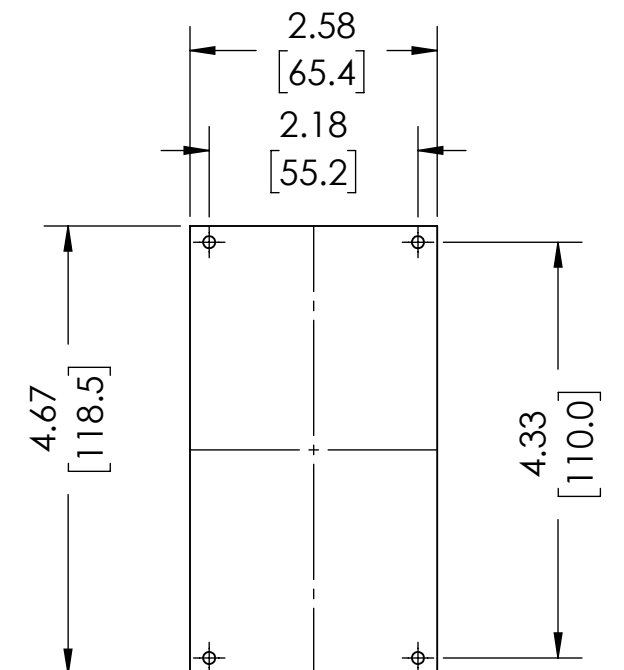
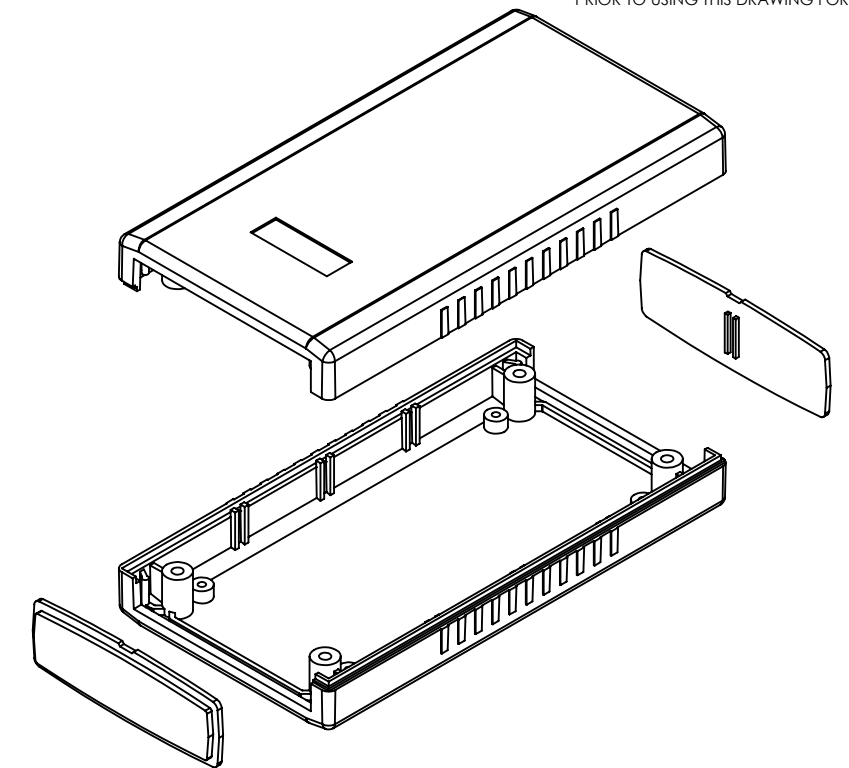


DRAWING FOR REFERENCE

WE RESERVE THE RIGHT TO MAKE CHANGES TO OUR
STANDARD PRODUCTS. PLEASE CONSULT WITH BUD INDUSTRIES
PRIOR TO USING THIS DRAWING FOR DESIGN PURPOSE.

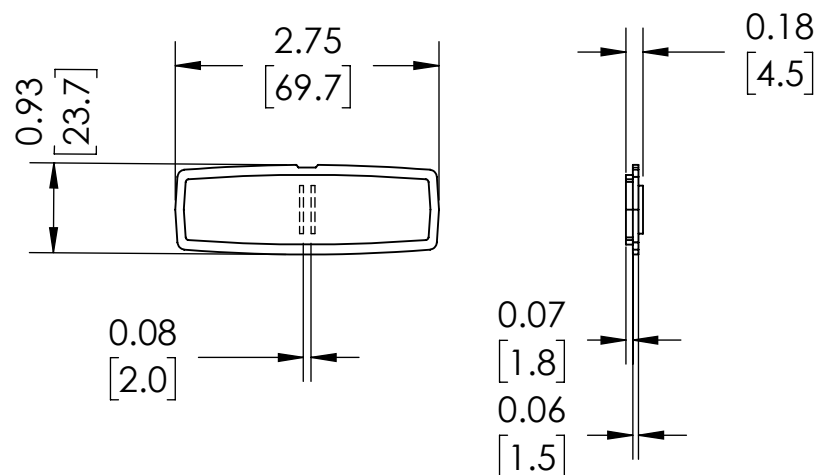


SECTION A-A



SUGGESTED PCB LAYOUT

SECTION B-B



PANEL (2) PCS

NOTE:

1. FOUR (4X) M3 X 20mm [0.79"] SCREWS SUPPLIED FOR ASSEMBLY
2. ALL OUTSIDE AND INSIDE LARGE SURFACES FOLLOW CONTOUR OF MAIN FACE

FOR ADDITIONAL PRODUCT INFORMATION
AND ACCESSORIES VISIT WWW.BUDIND.COM

MATERIAL AND FINISH:

NO SUFFIX - DARK GRAY ABS COVERS WITH LIGHT GRAY ABS
END PANELS. UL94V-0 FLAMMABILITY RATING.
SUFFIX -LG - LIGHT GRAY ABS COVERS WITH DARK GRAY ABS
END PANELS. UL94-HB FLAMMABILITY RATING.

Mouser Electronics

Authorized Distributor

Click to View Pricing, Inventory, Delivery & Lifecycle Information:

[Bud Industries:](#)

[PI-1907](#) [PI-1908](#) [PI-1906](#) [PI-1908-LG](#) [PI-1906-LG](#) [PI-1907-LG](#)