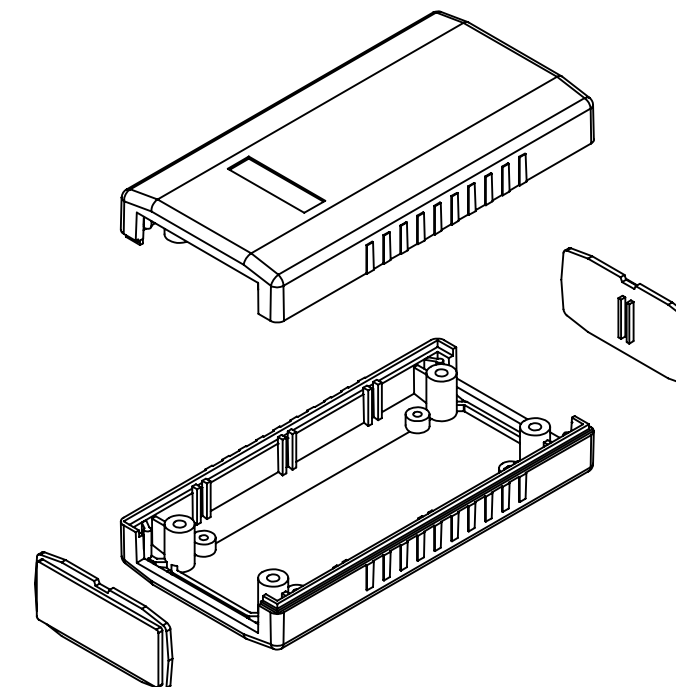
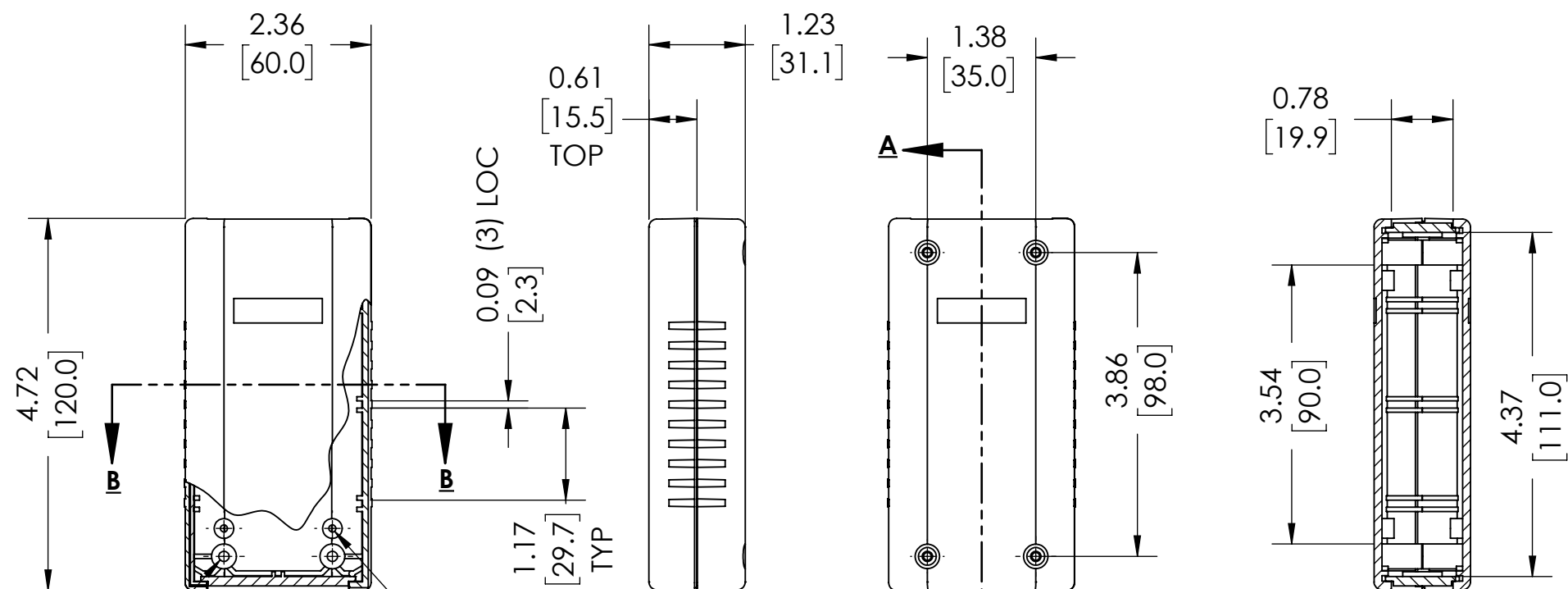
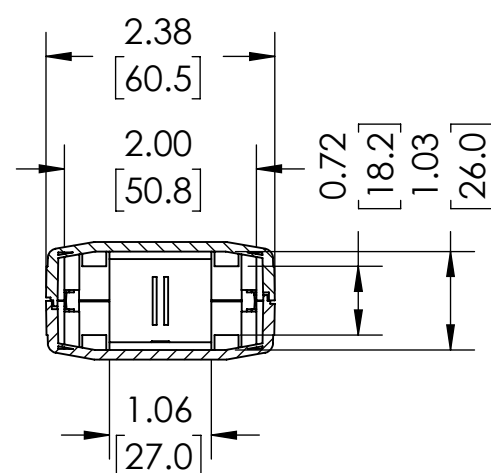
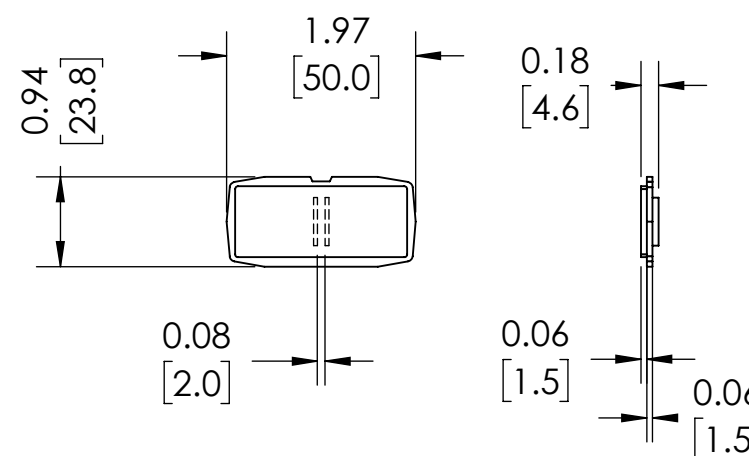
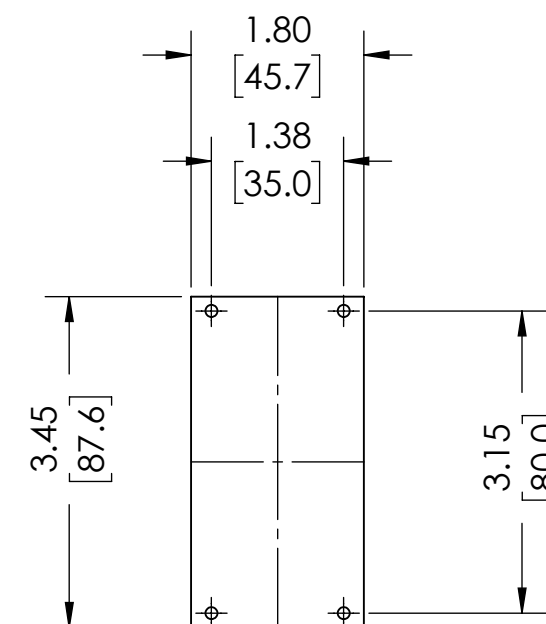


**DRAWING FOR REFERENCE**

WE RESERVE THE RIGHT TO MAKE CHANGES TO OUR  
STANDARD PRODUCTS. PLEASE CONSULT WITH BUD INDUSTRIES  
PRIOR TO USING THIS DRAWING FOR DESIGN PURPOSE.

**SECTION A-A**

1.79 [45.5]  
.315 DIA BOSS WITH M3 X .25 INSERT (4)  
.25 DIA BOSS WITH .09 DIA HOLE X .16 DP MOUNTING BOSS (4) SEE PCB BELOW FOR LOCATIONS - USE M2.5 OR #4 SHEET METAL SCREW (NOT SUPPLIED)

**SECTION B-B****PANEL (2) PCS****SUGGESTED PCB LAYOUT****NOTE:**

1. FOUR (4X) M3 X 20mm [0.79"] SCREWS SUPPLIED FOR ASSEMBLY
2. ALL OUTSIDE AND INSIDE LARGE SURFACES FOLLOW CONTOUR OF MAIN FACE

FOR ADDITIONAL PRODUCT INFORMATION  
AND ACCESSORIES VISIT [WWW.BUDIND.COM](http://WWW.BUDIND.COM)

**MATERIAL AND FINISH:**

NO SUFFIX - DARK GRAY ABS COVERS WITH LIGHT GRAY ABS  
END PANELS. UL94V-0 FLAMMABILITY RATING.  
SUFFIX -LG - LIGHT GRAY ABS COVERS WITH DARK GRAY ABS  
END PANELS. UL94-HB FLAMMABILITY RATING.

# Mouser Electronics

Authorized Distributor

Click to View Pricing, Inventory, Delivery & Lifecycle Information:

[Bud Industries:](#)

[PI-1903](#) [PI-1905](#) [PI-1904](#) [PI-1904-LG](#) [PI-1905-LG](#) [PI-1903-LG](#)