

THE INFORMATION CONTAINED IN THIS DRAWING IS THE SOLE PROPERTY OF
BUD INDUSTRIES INC. ANY REPRODUCTION IN PART OR WHOLE WITHOUT
THE WRITTEN PERMISSION OF BUD INDUSTRIES INC. IS PROHIBITED.

MATERIAL - ALUMINUM ALLOY #ADC-12

FINISH - NATURAL (CONTACT BUD FACTORY FOR
ALTERNATE FINISHES)

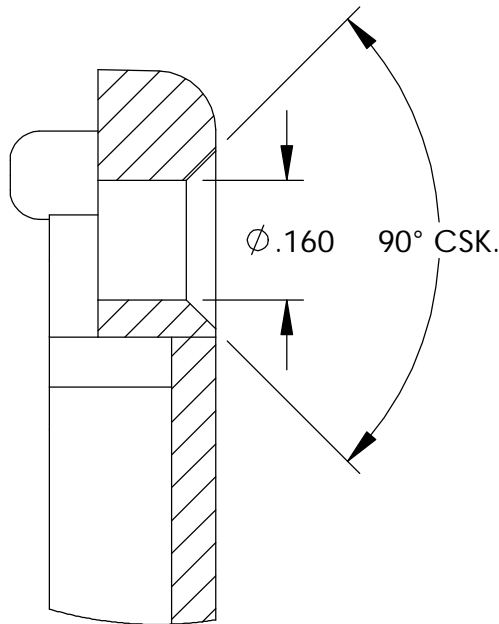
GASKET - RATED IP65 NEOPRENE, SELF-ADHESIVE,
3mm THICK, COLOR BLACK

SCREWS - STAINLESS STEEL, M3.5 x 12mm LG.,
CSK. HEAD, SELF-THREADING

ALL HOLE DIAMETERS HAVE $\pm .005$ TOLERANCE.

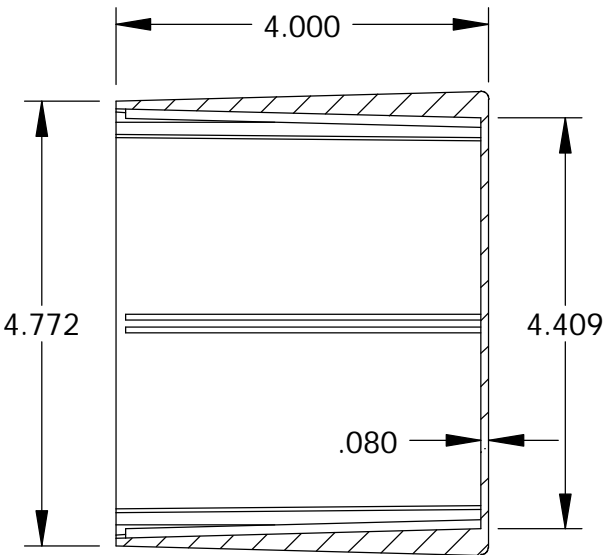
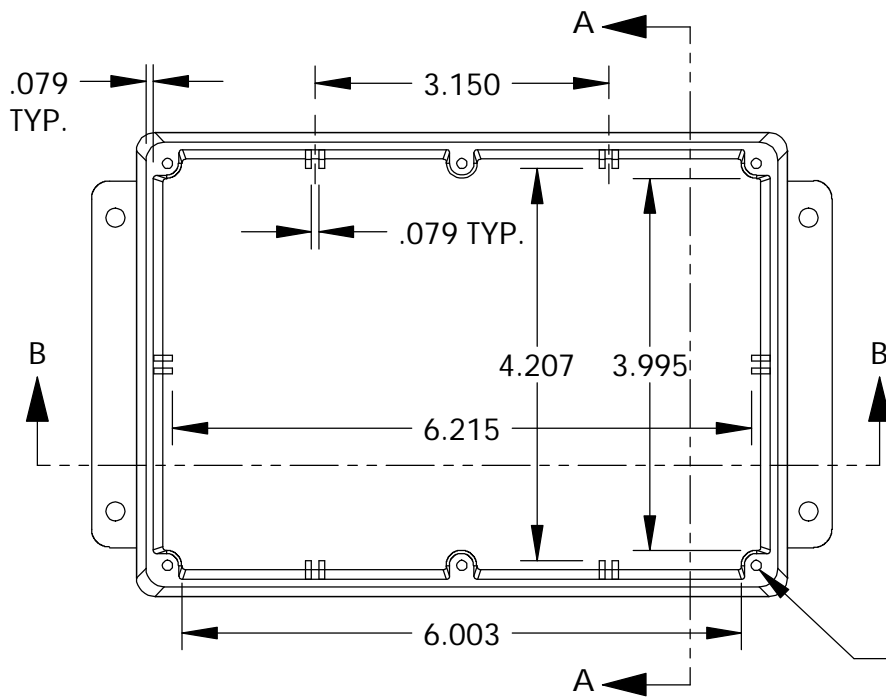
ALL OTHER DIMENSIONS HAVE $\pm .015$ TOLERANCE.

ENCLOSURES ARE SHIPPED UNASSEMBLED WITH
ALL ITEMS SHOWN.

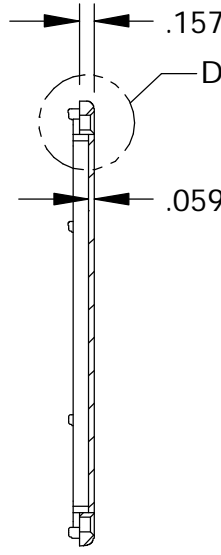
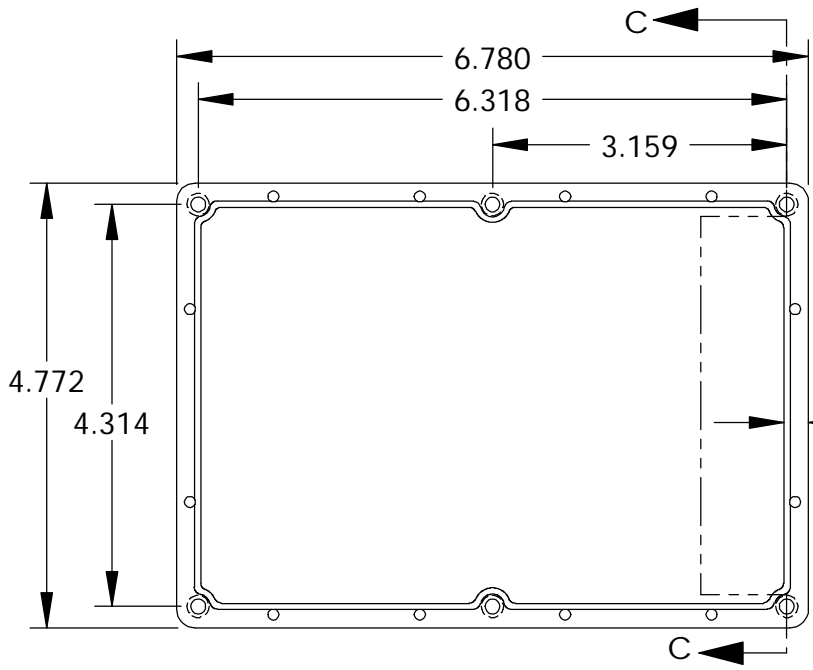


DETAIL D
SCALE 4 : 1

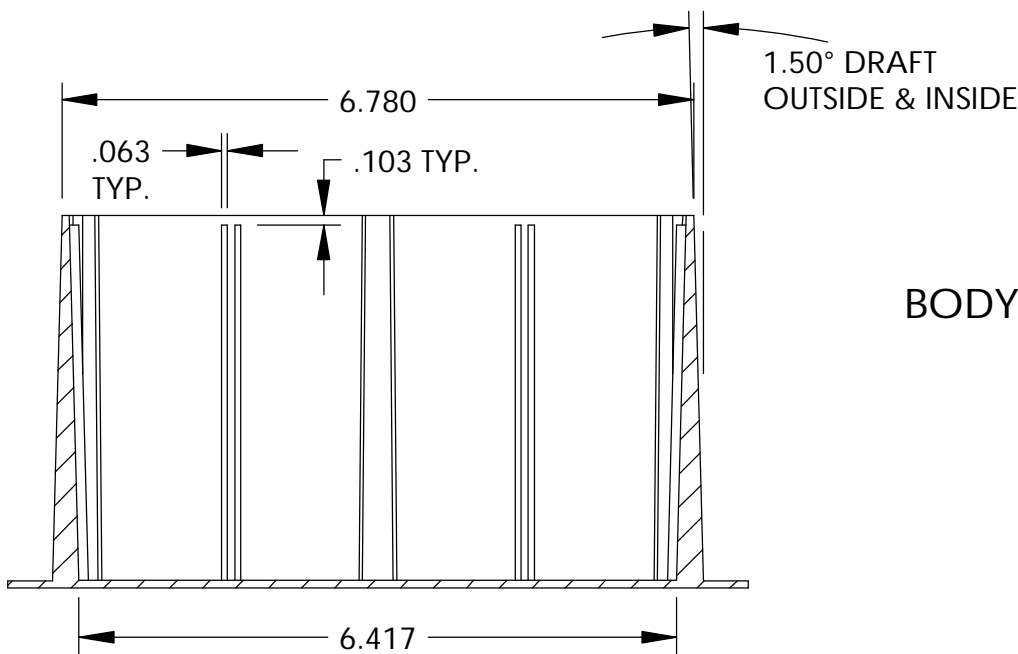
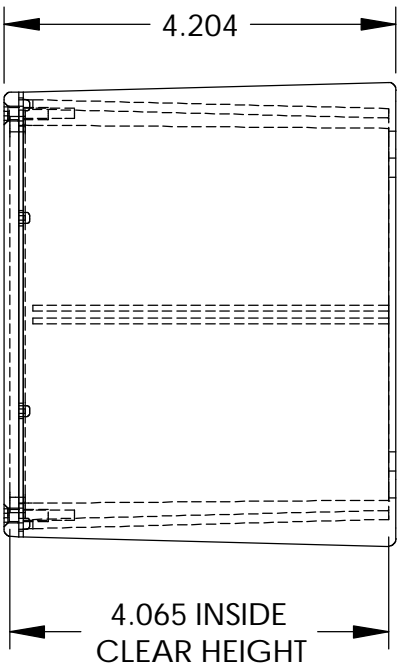
DWG. NO.	CN-6710
ISSUE	REVISIONS



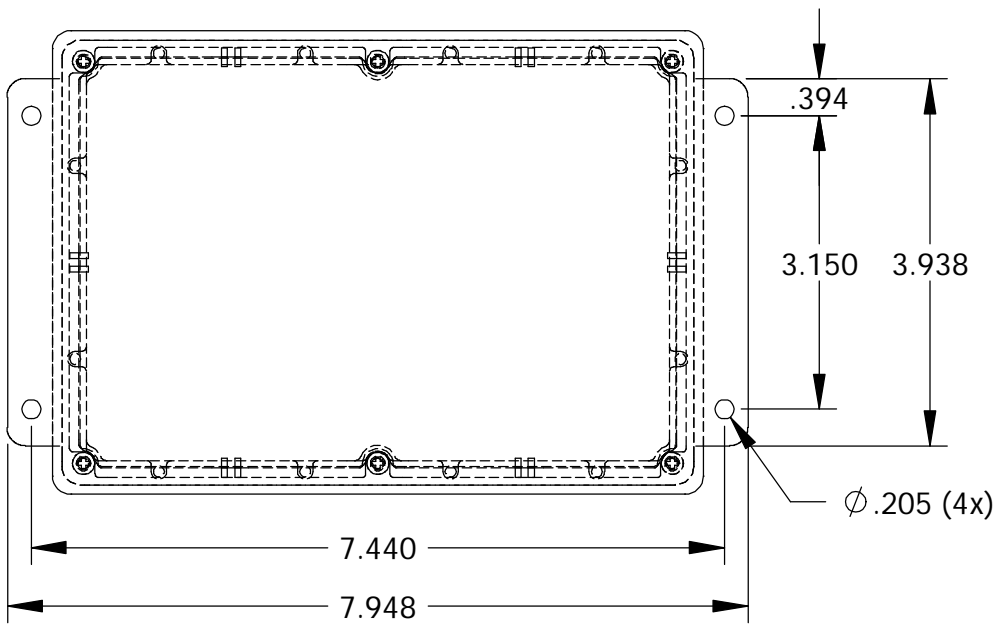
SECTION A-A



SECTION C-C

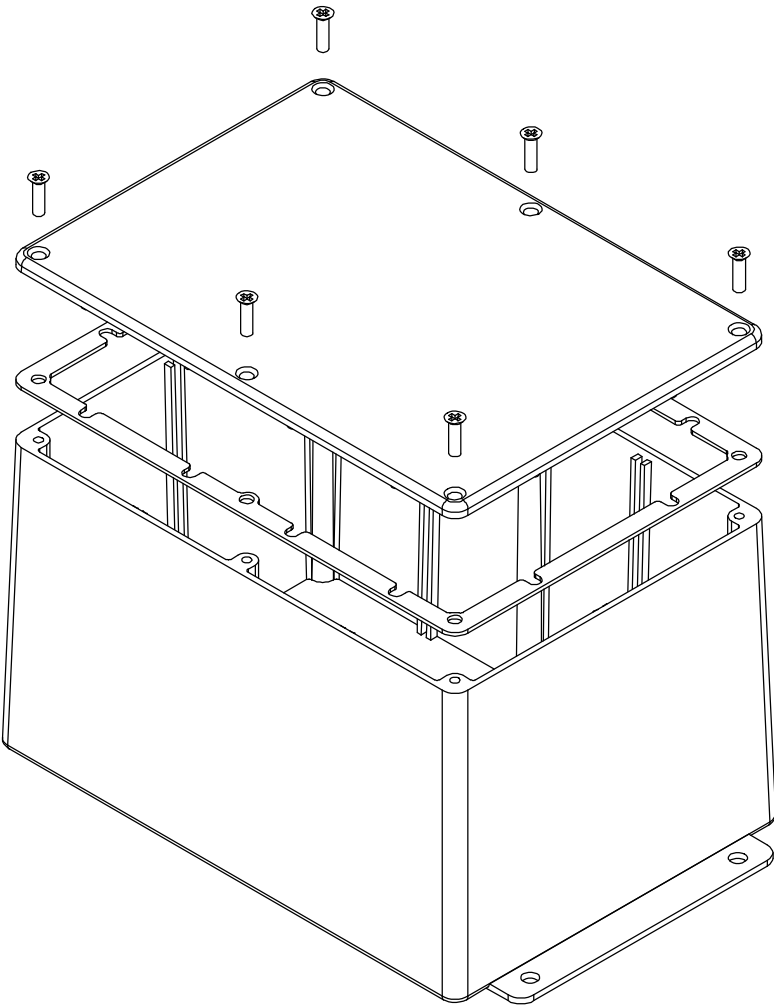


SECTION B-B



BODY

COVER



PARTS LIST						
+/- .005 BETWEEN HOLE CENTERS +/- .015 FROM SHEARED EDGE +/- .032 FROM A BENT SURFACE +/- .062 BETWEEN ASSEMBLED SURFACES UNLESS OTHERWISE SPECIFIED MATERIAL FINISH DO NOT SCALE DRAWING		CAD GENERATED DRAWING. DO NOT MANUALLY UPDATE		BUD INDUSTRIES INC. DIE CAST ALUMINUM ENCLOSURE		
		APPROVALS	DATE			
		DRAWN DAB	4-3-06			
		CHECKED				
AS NOTED		APPROVED		SIZE C	DWGS. NO. CN-6710	REV.
AS NOTED						
				SCALE	CAD FILE:	SHEET 1 OF 1

Mouser Electronics

Authorized Distributor

Click to View Pricing, Inventory, Delivery & Lifecycle Information:

[Bud Industries:](#)

[CN-6710](#)