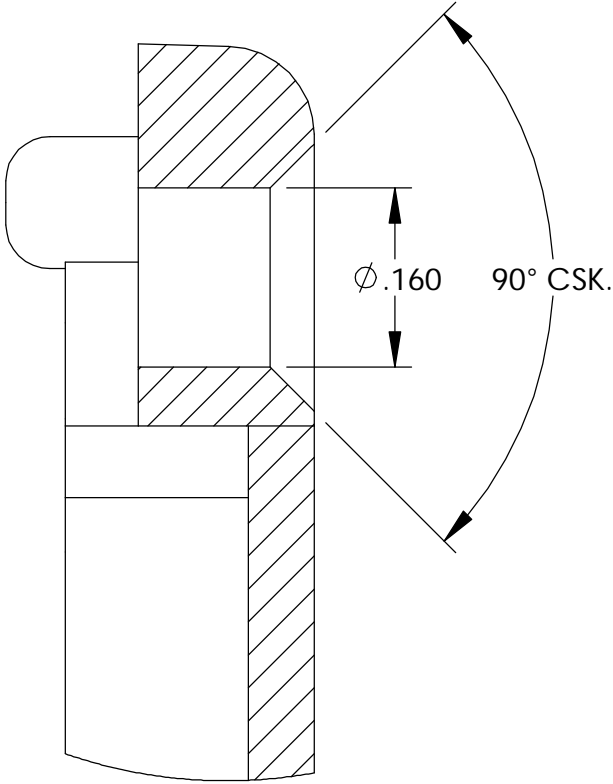
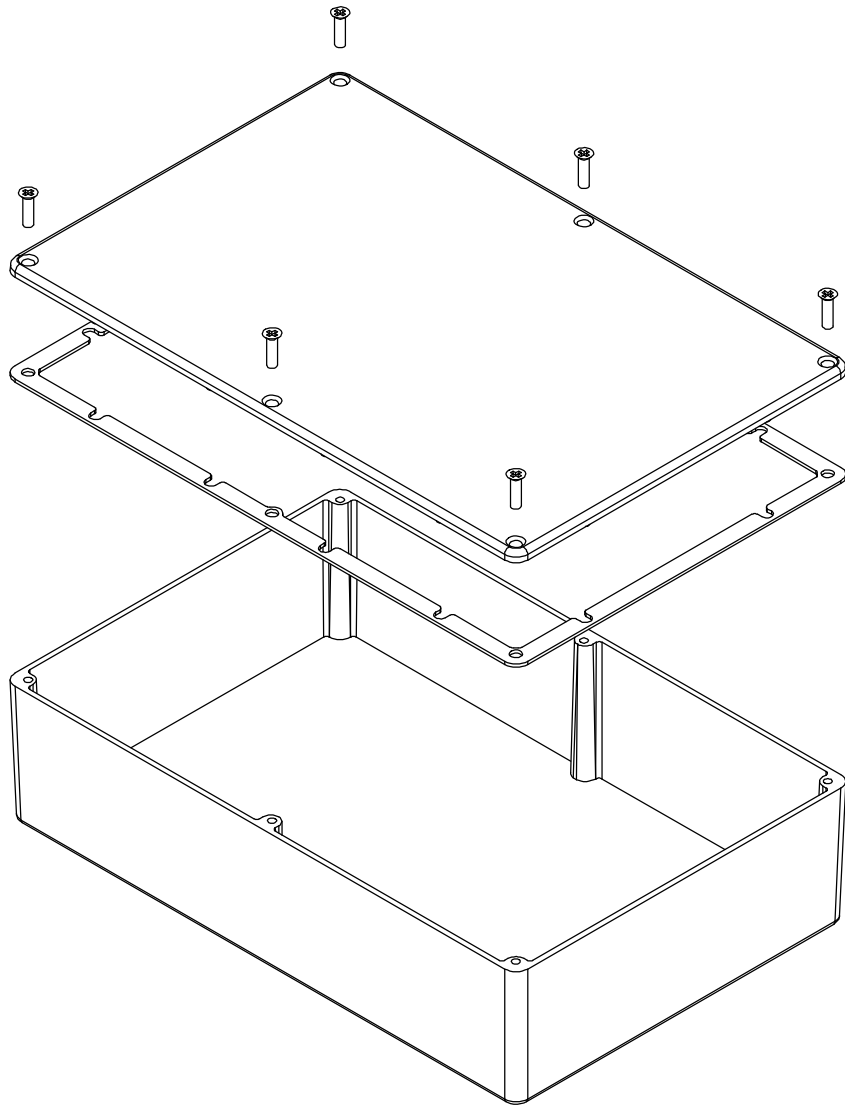


THE INFORMATION CONTAINED IN THIS DRAWING IS THE SOLE PROPERTY OF
BUD INDUSTRIES INC. ANY REPRODUCTION IN PART OR WHOLE WITHOUT
THE WRITTEN PERMISSION OF BUD INDUSTRIES INC. IS PROHIBITED.

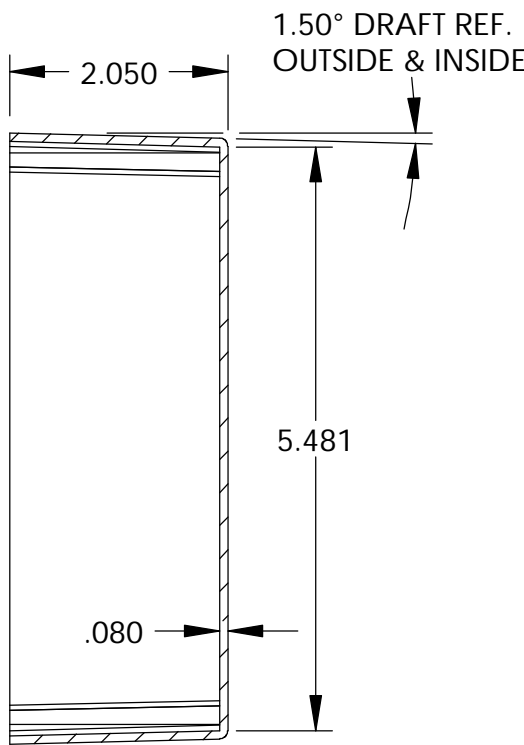
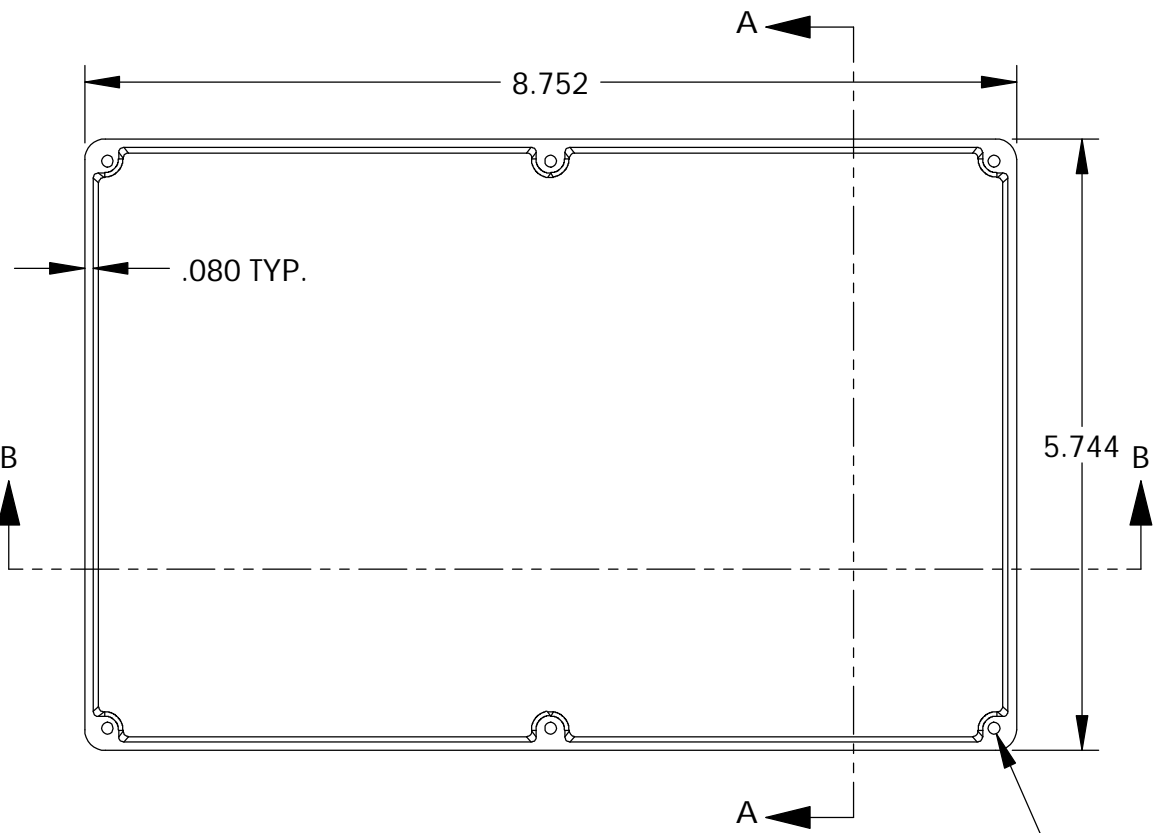
DWG. NO.	CN-5711
ISSUE	REVISIONS

MATERIAL - ALUMINUM ALLOY #ADC-12
FINISH - NATURAL (CONTACT BUD FACTORY FOR
ALTERNATE FINISHES)
GASKET - RATED IP65 NEOPRENE, SELF-ADHESIVE,
3mm THICK, COLOR BLACK
SCREWS - STAINLESS STEEL, M3.5 x 12mm LG.,
CSK. HEAD, SELF-THREADING

ALL HOLE DIAMETERS HAVE $\pm .005$ TOLERANCE.
ALL OTHER DIMENSIONS HAVE $\pm .015$ TOLERANCE.
ENCLOSURES ARE SHIPPED UNASSEMBLED WITH
ALL ITEMS SHOWN.



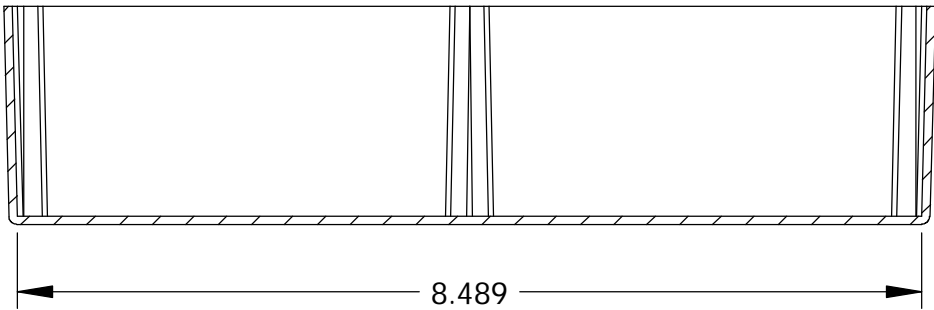
DETAIL D
SCALE 6 : 1



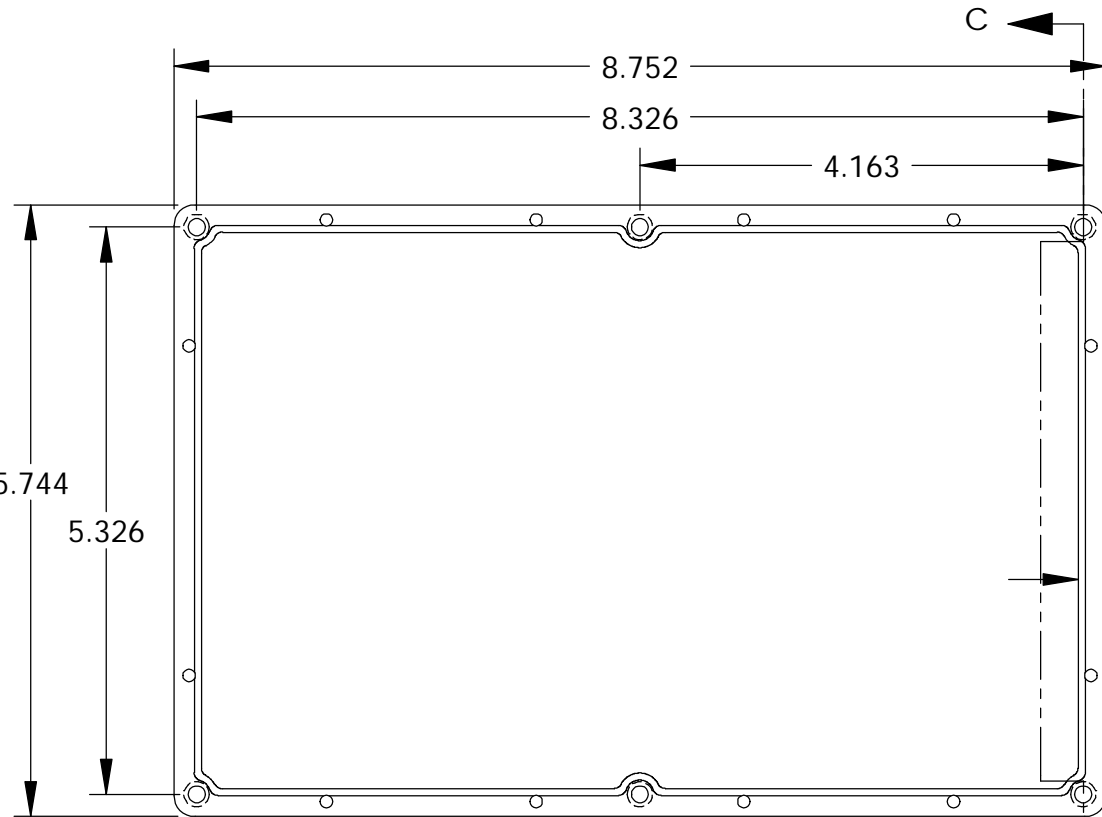
SECTION A-A

TAPPED M3.5 (6x)

BODY

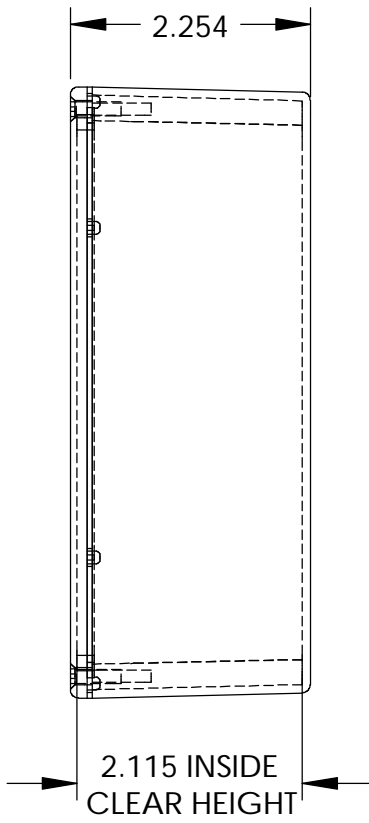
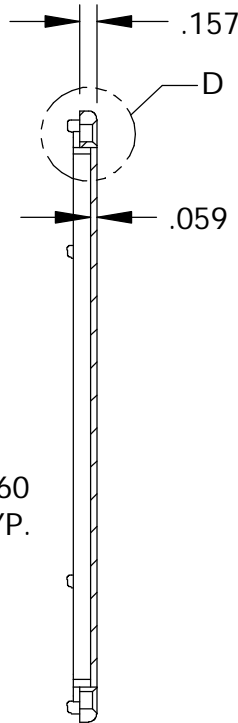


SECTION B-B



SECTION C-C

COVER



PARTS LIST			
+/- .005 BETWEEN HOLE CENTERS +/- .015 FROM SHEARED EDGE +/- .032 FROM A BENT SURFACE +/- .062 BETWEEN ASSEMBLED SURFACES UNLESS OTHERWISE SPECIFIED	CAD GENERATED DRAWING. DO NOT MANUALLY UPDATE		BUD INDUSTRIES INC. DIE CAST ALUMINUM ENCLOSURE
	APPROVALS	DATE	
	DRAWN DAB	3-31-06	
	CHECKED		
MATERIAL AS NOTED	APPROVED		DWG. NO. CN-5711
FINISH AS NOTED			
DO NOT SCALE DRAWING			

QTY.	USED ON

SCALE	CAD FILE:	SHEET 1 OF 1

Mouser Electronics

Authorized Distributor

Click to View Pricing, Inventory, Delivery & Lifecycle Information:

[Bud Industries:](#)

[CN-5711](#)