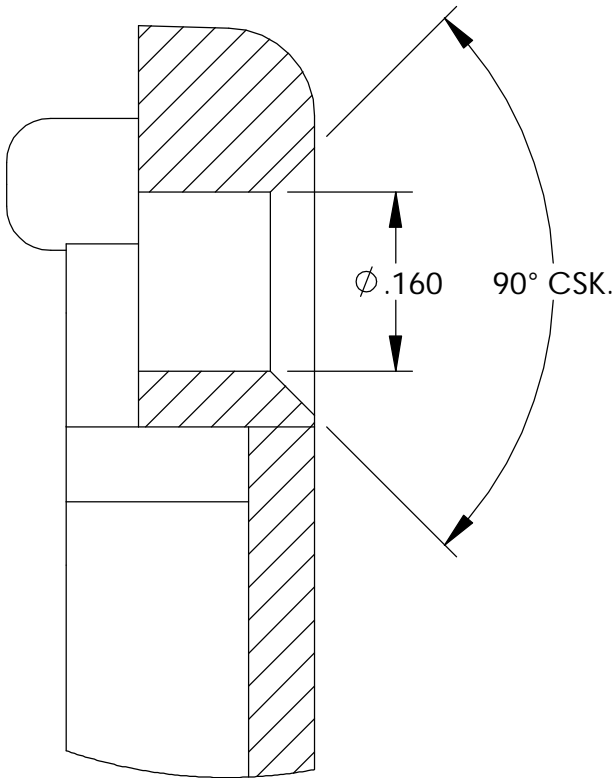
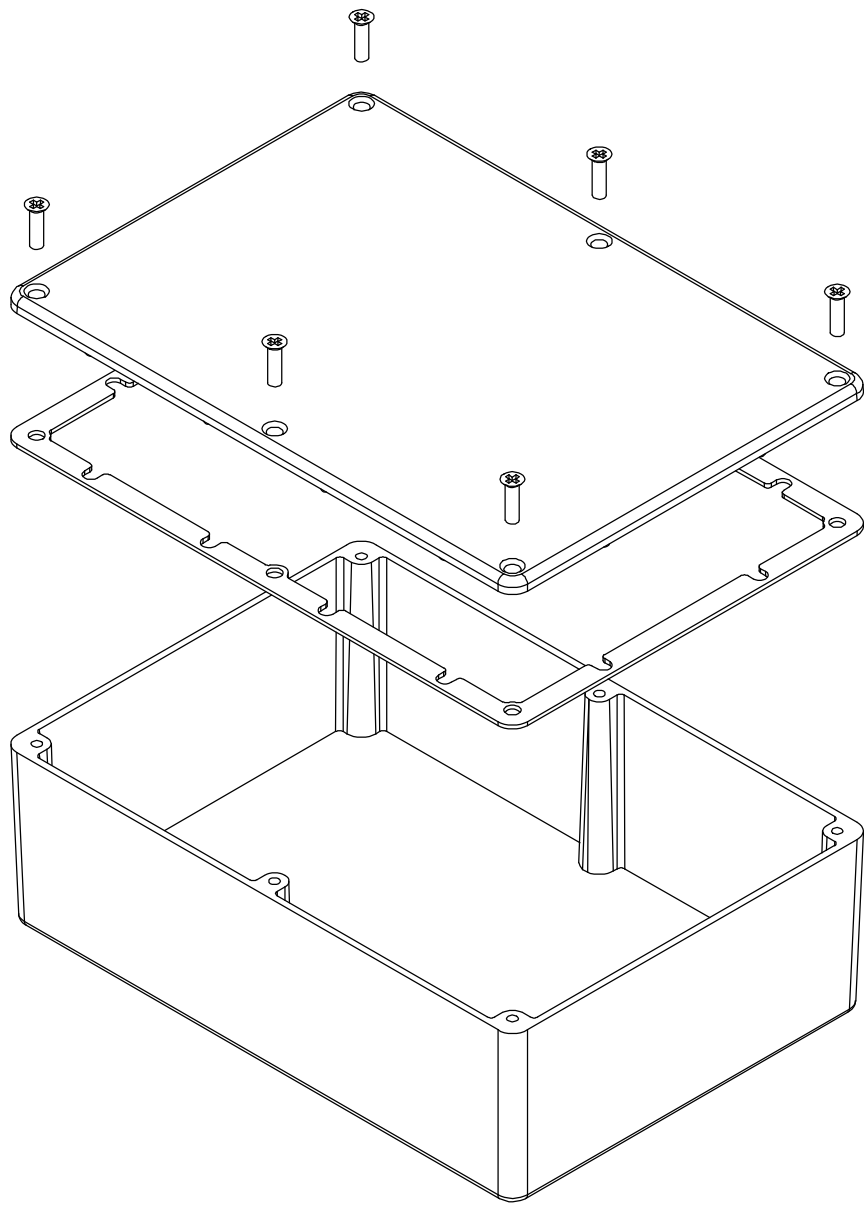


THE INFORMATION CONTAINED IN THIS DRAWING IS THE SOLE PROPERTY OF  
BUD INDUSTRIES INC. ANY REPRODUCTION IN PART OR WHOLE WITHOUT  
THE WRITTEN PERMISSION OF BUD INDUSTRIES INC. IS PROHIBITED.

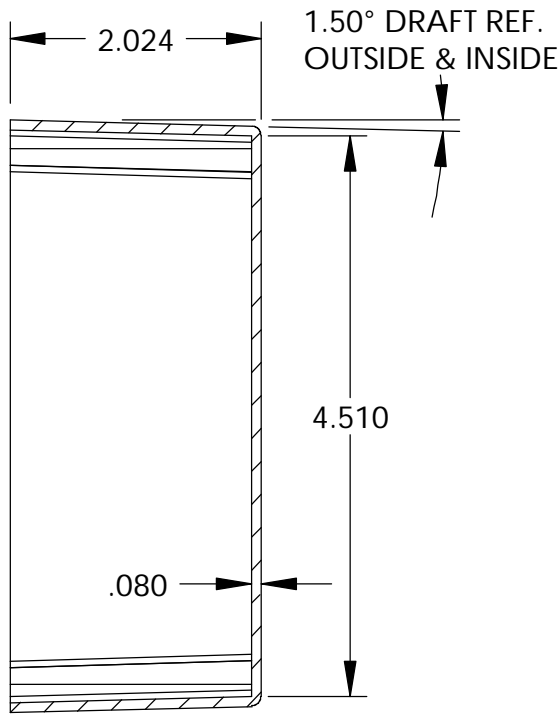
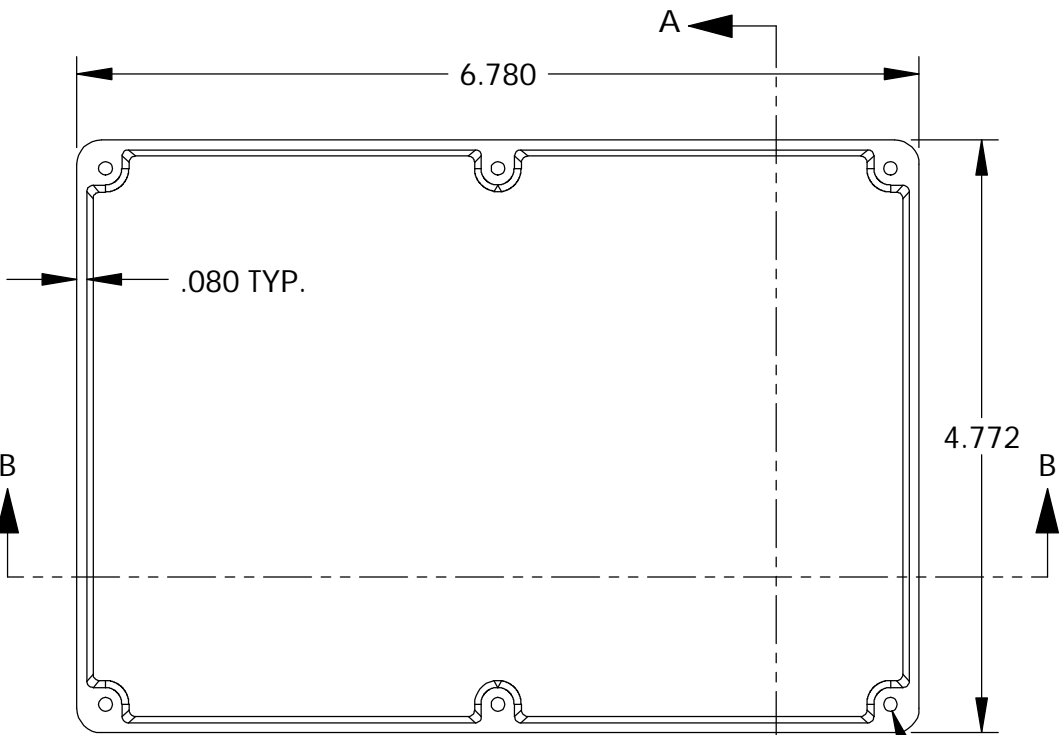
|          |           |
|----------|-----------|
| DWG. NO. | CN-5709   |
| ISSUE    | REVISIONS |
|          |           |

MATERIAL - ALUMINUM ALLOY #ADC-12  
FINISH - NATURAL (CONTACT BUD FACTORY FOR  
ALTERNATE FINISHES)  
GASKET - RATED IP65 NEOPRENE, SELF-ADHESIVE,  
3mm THICK, COLOR BLACK  
SCREWS - STAINLESS STEEL, M3.5 x 12mm LG.,  
CSK. HEAD, SELF-THREADING

ALL HOLE DIAMETERS HAVE  $\pm .005$  TOLERANCE.  
ALL OTHER DIMENSIONS HAVE  $\pm .015$  TOLERANCE.  
ENCLOSURES ARE SHIPPED UNASSEMBLED WITH  
ALL ITEMS SHOWN.



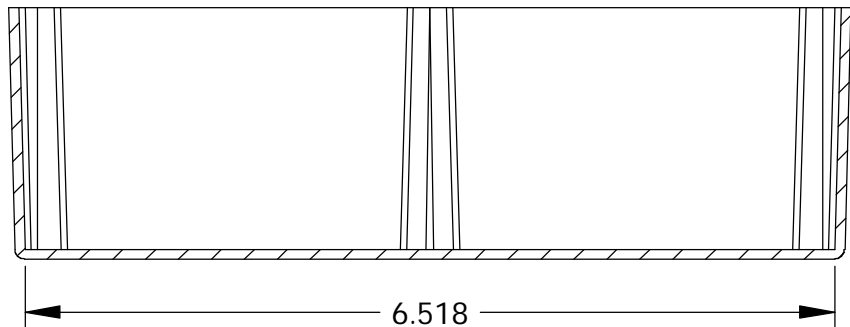
DETAIL D  
SCALE 6 : 1



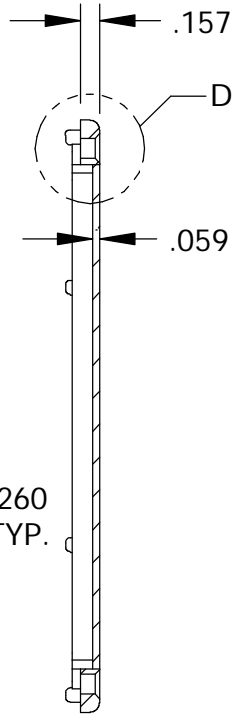
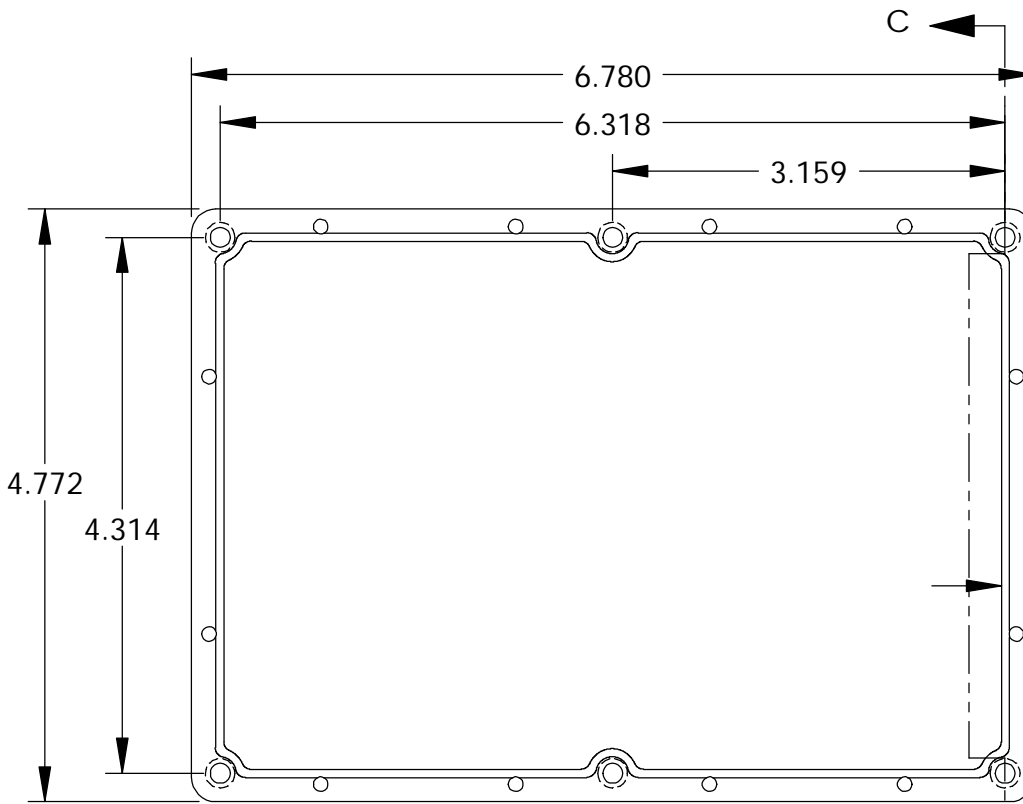
SECTION A-A

TAPPED M3.5 (6x)

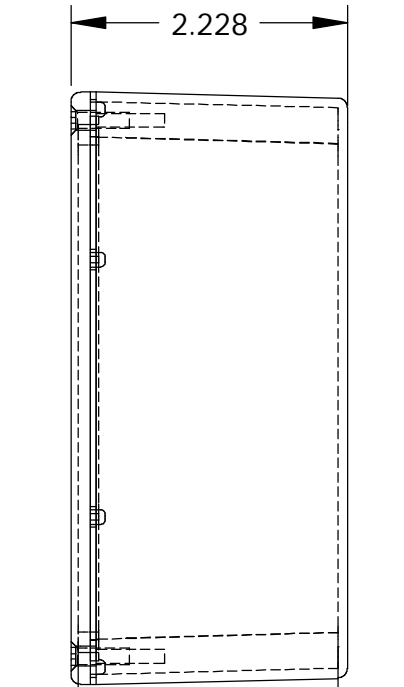
BODY



SECTION B-B



SECTION C-C



COVER

PARTS LIST

|  |  |  |  |
|--|--|--|--|
| +/- .005 BETWEEN HOLE CENTERS<br>+/- .015 FROM SHEARED EDGE<br>+/- .032 FROM A BENT SURFACE<br>+/- .062 BETWEEN ASSEMBLED SURFACES<br>UNLESS OTHERWISE SPECIFIED |  | CAD GENERATED DRAWING.<br>DO NOT MANUALLY UPDATE |  |
| APPROVALS  |  | DATE   |  |
| DRAWN  |  | DAB 3-31-06                                      |  |
| CHECKED  |  |  |  |
| MATERIAL   |  |  |  |
| FINISH   |  |  |  |

AS NOTED  
AS NOTED

DO NOT SCALE DRAWING

BUD INDUSTRIES INC.

DIE CAST ALUMINUM  
ENCLOSURE

|           |                     |              |
|-----------|---------------------|--------------|
| SIZE<br>C | DWG. NO.<br>CN-5709 | REV.         |
| SCALE     | CAD FILE:           | SHEET 1 OF 1 |

# Mouser Electronics

Authorized Distributor

Click to View Pricing, Inventory, Delivery & Lifecycle Information:

[Bud Industries:](#)

[CN-5709](#)