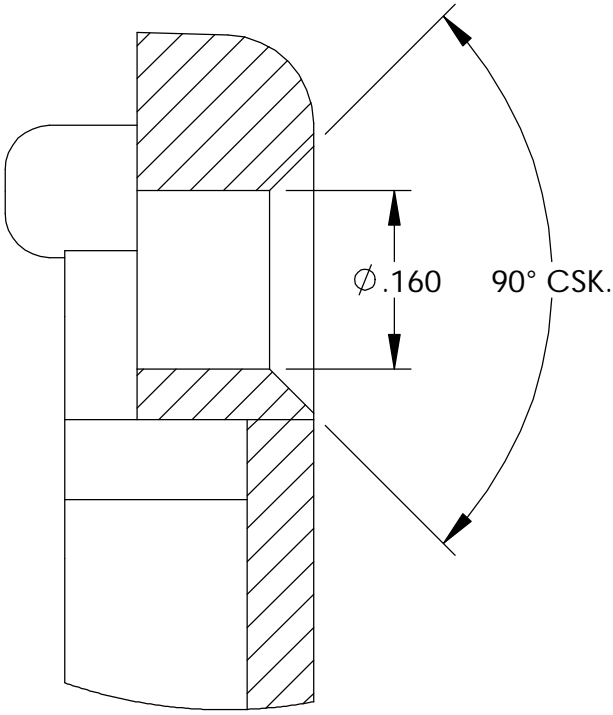
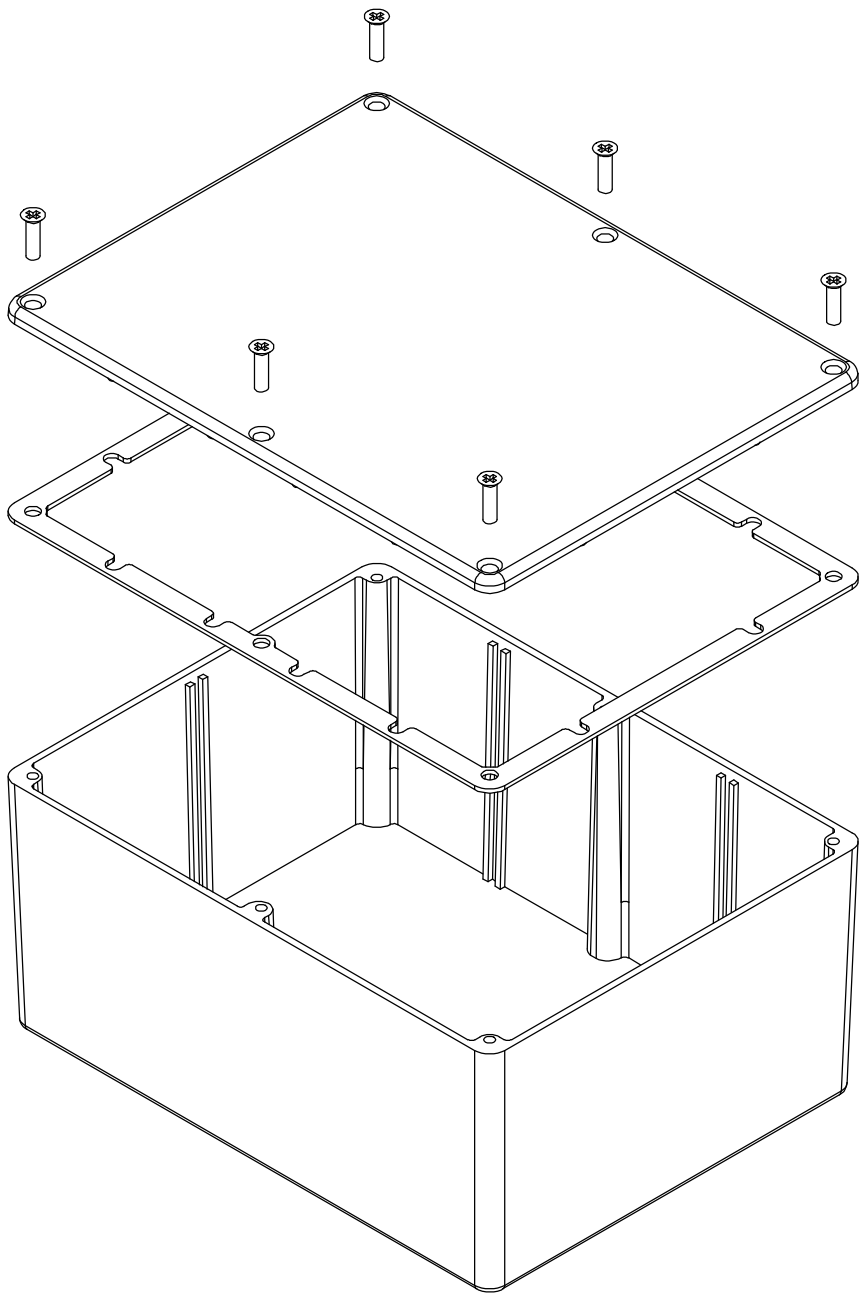


THE INFORMATION CONTAINED IN THIS DRAWING IS THE SOLE PROPERTY OF  
BUD INDUSTRIES INC. ANY REPRODUCTION IN PART OR WHOLE WITHOUT  
THE WRITTEN PERMISSION OF BUD INDUSTRIES INC. IS PROHIBITED.

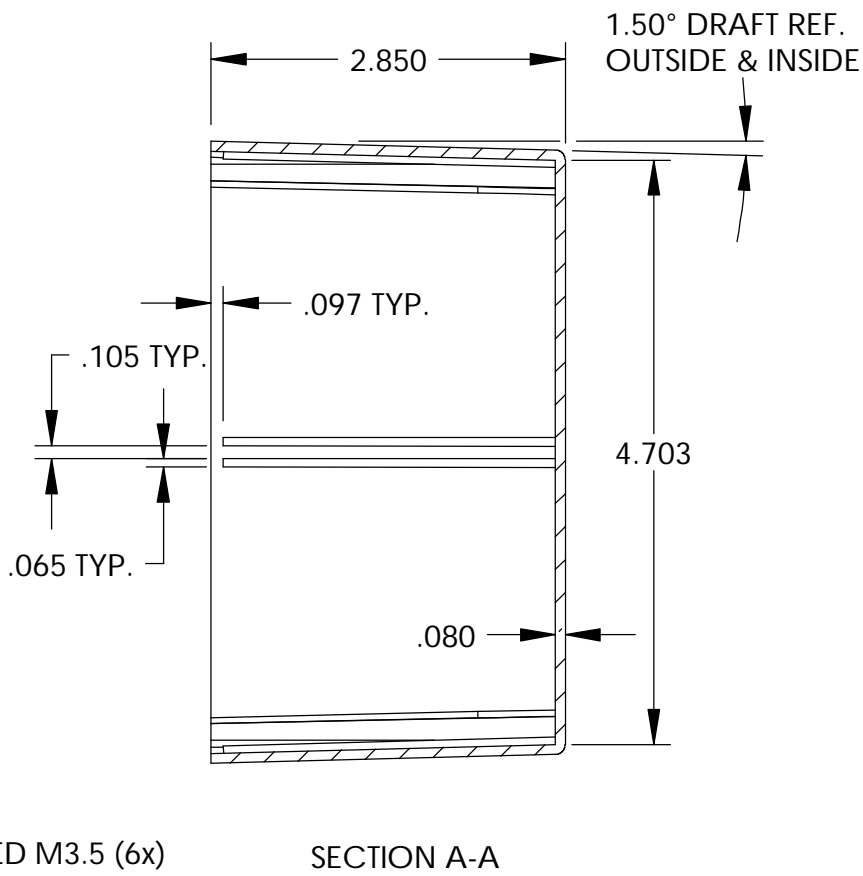
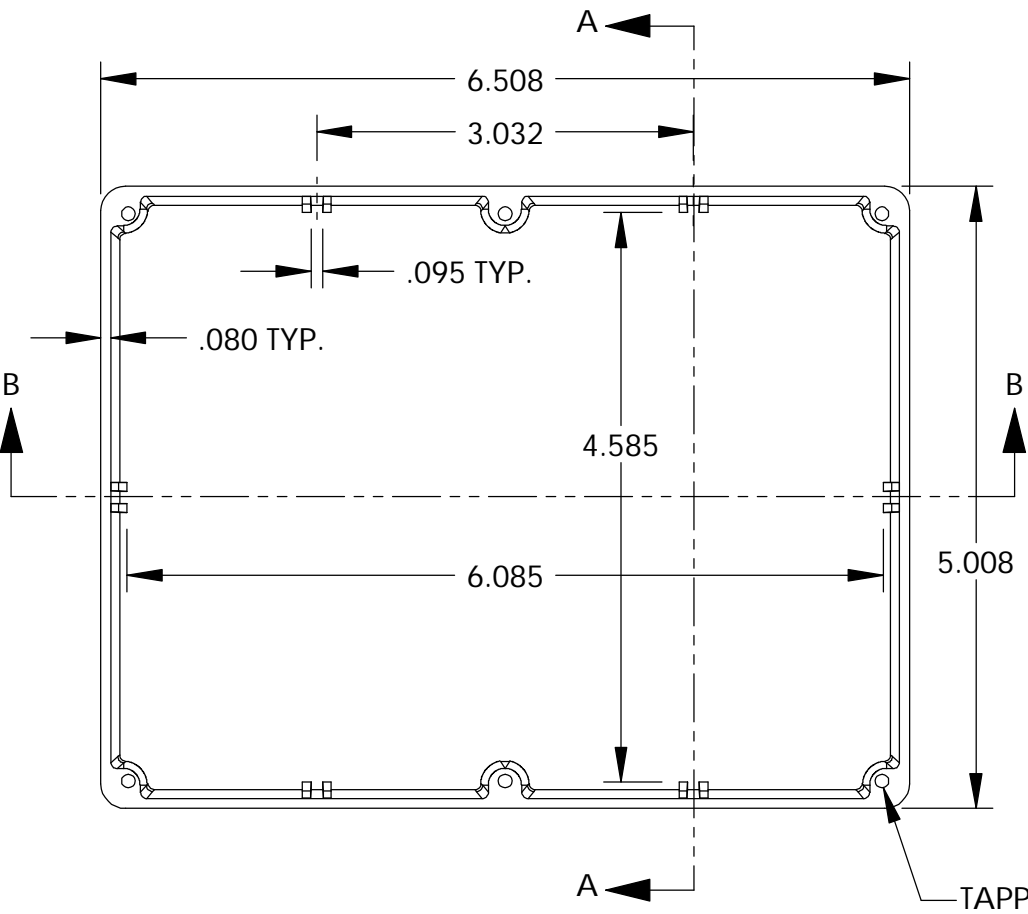
DWG. NO.	CN-5708
ISSUE	REVISIONS

MATERIAL - ALUMINUM ALLOY #ADC-12  
FINISH - NATURAL (CONTACT BUD FACTORY FOR  
ALTERNATE FINISHES)  
GASKET - RATED IP65 NEOPRENE, SELF-ADHESIVE,  
3mm THICK, COLOR BLACK  
SCREWS - STAINLESS STEEL, M3.5 x 12mm LG.,  
CSK. HEAD, SELF-THREADING

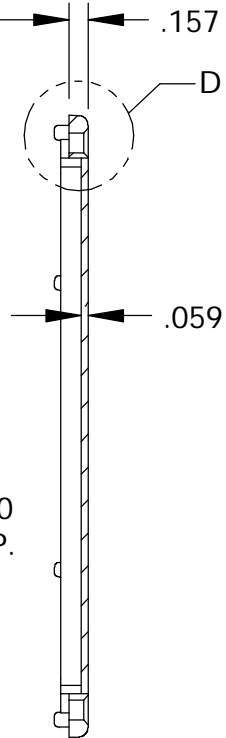
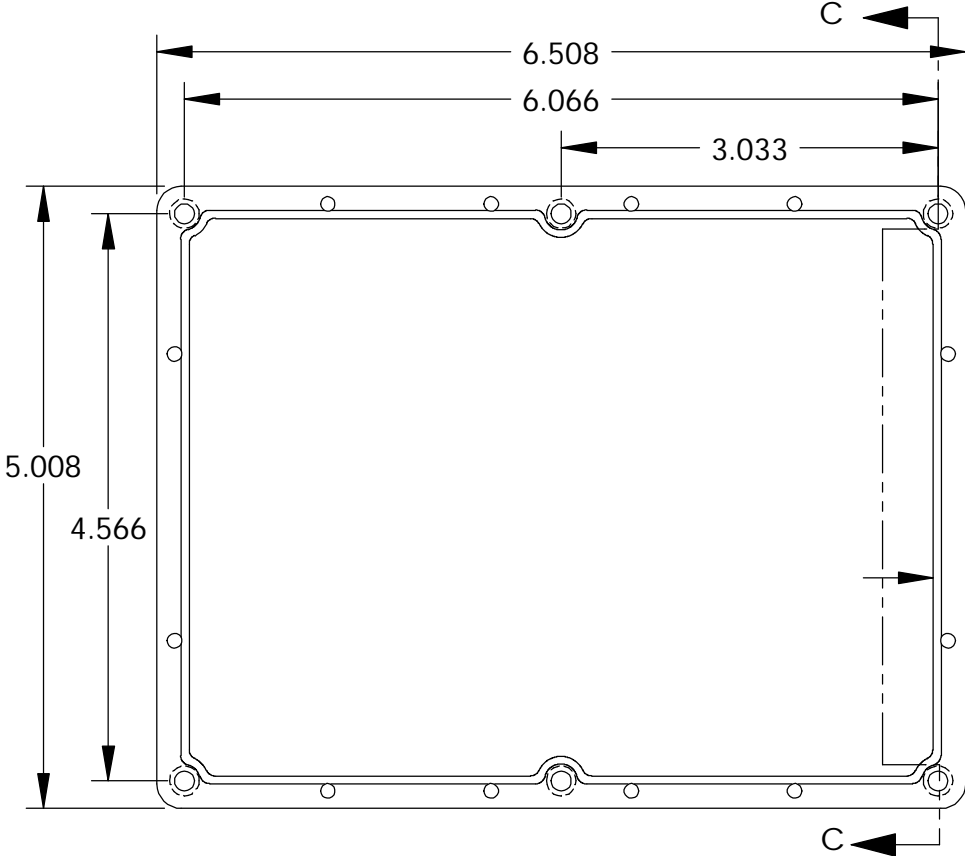
ALL HOLE DIAMETERS HAVE  $\pm .005$  TOLERANCE.  
ALL OTHER DIMENSIONS HAVE  $\pm .015$  TOLERANCE.  
ENCLOSURES ARE SHIPPED UNASSEMBLED WITH  
ALL ITEMS SHOWN.



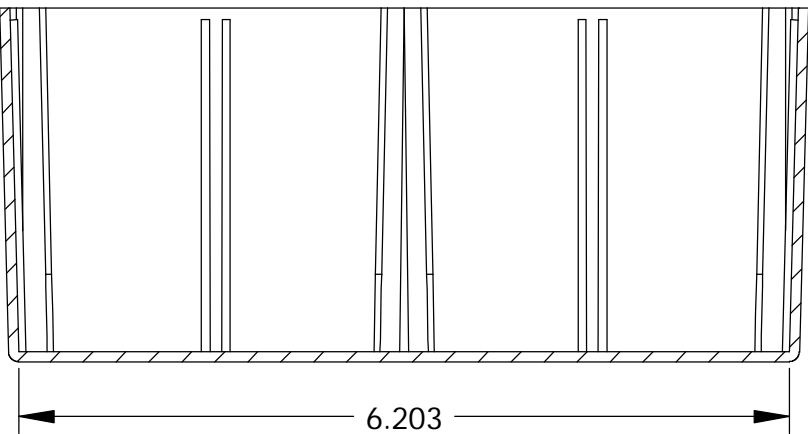
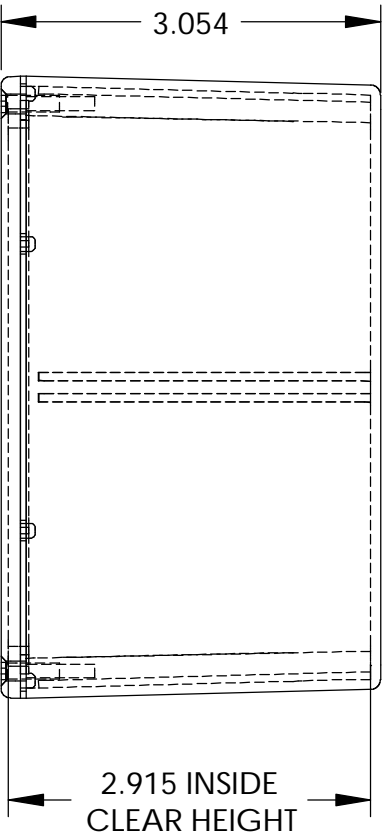
DETAIL D  
SCALE 6 : 1



SECTION A-A



SECTION C-C



SECTION B-B

BODY

COVER

PARTS LIST											
			+/- .005 BETWEEN HOLE CENTERS +/- .015 FROM SHEARED EDGE +/- .032 FROM A BENT SURFACE +/- .062 BETWEEN ASSEMBLED SURFACES UNLESS OTHERWISE SPECIFIED	CAD GENERATED DRAWING. DO NOT MANUALLY UPDATE		BUD INDUSTRIES INC.					
				APPROVALS	DATE						
				MATERIAL	AS NOTED	CHECKED		DIE CAST ALUMINUM ENCLOSURE			
				FINISH	AS NOTED	APPROVED					
QTY.	USED ON	DO NOT SCALE DRAWING				SIZE C	DWG. NO. CN-5708	REV.			
						SCALE	CAD FILE:	SHEET 1 OF 1			

# Mouser Electronics

Authorized Distributor

Click to View Pricing, Inventory, Delivery & Lifecycle Information:

[Bud Industries:](#)

[CN-5708](#)