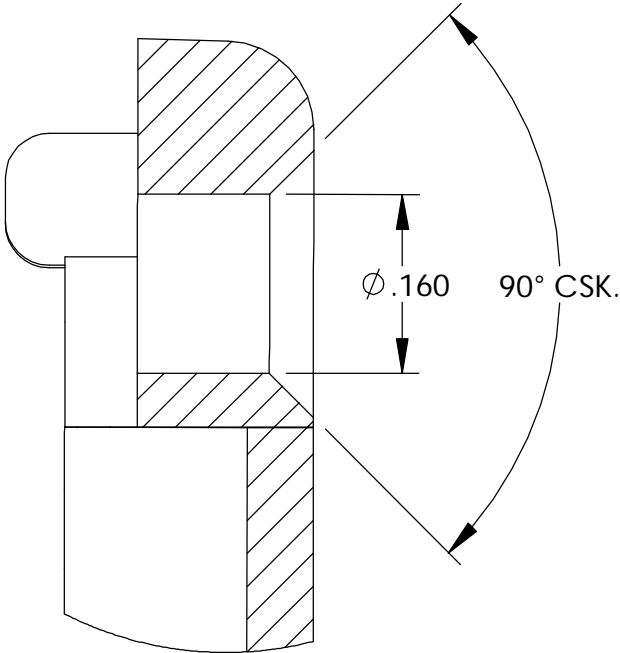
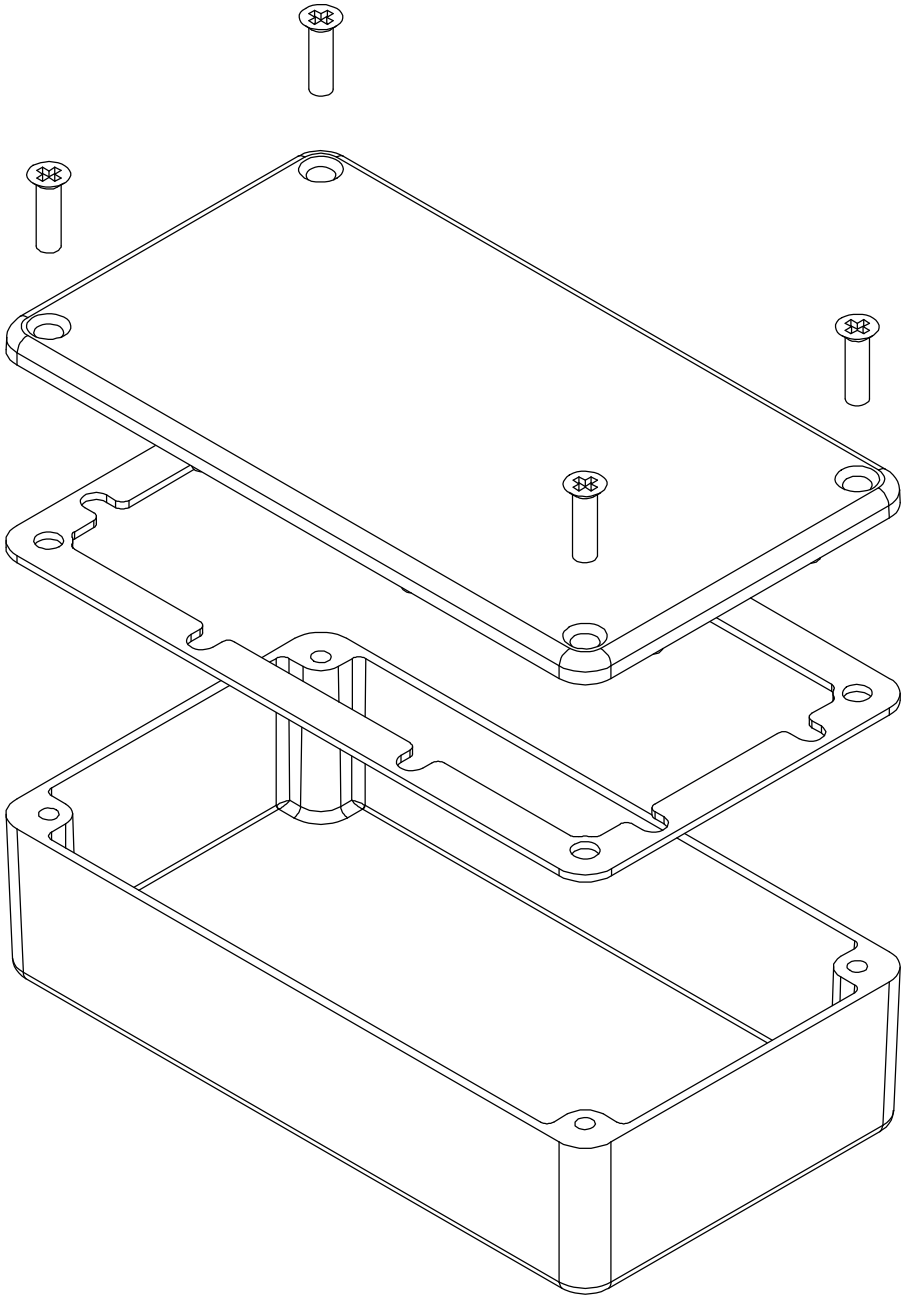


THE INFORMATION CONTAINED IN THIS DRAWING IS THE SOLE PROPERTY OF
BUD INDUSTRIES INC. ANY REPRODUCTION IN PART OR WHOLE WITHOUT
THE WRITTEN PERMISSION OF BUD INDUSTRIES INC. IS PROHIBITED.

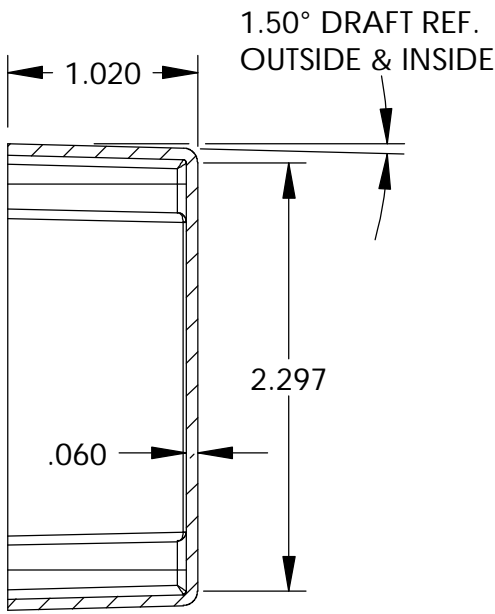
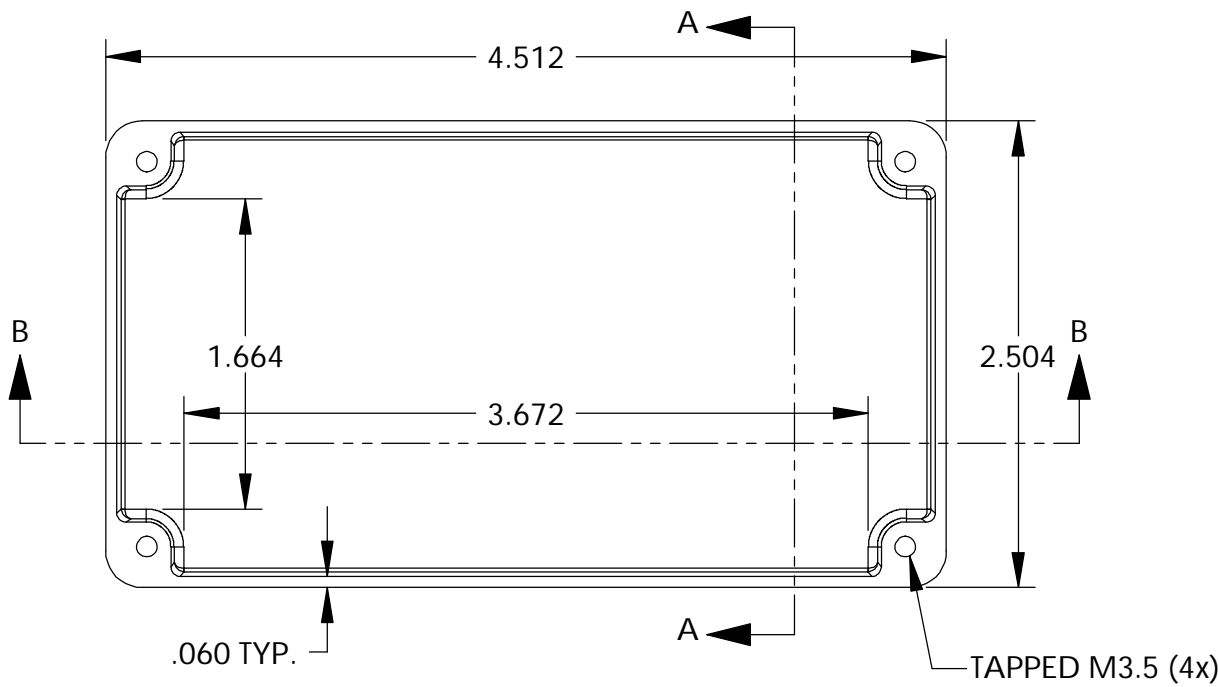
DWG. NO.	CN-5703
ISSUE	REVISIONS

MATERIAL - ALUMINUM ALLOY #ADC-12
FINISH - NATURAL (CONTACT BUD FACTORY FOR
ALTERNATE FINISHES)
GASKET - RATED IP65 NEOPRENE, SELF-ADHESIVE,
3mm THICK, COLOR BLACK
SCREWS - STAINLESS STEEL, M3.5 x 12mm LG.,
CSK. HEAD, SELF-THREADING

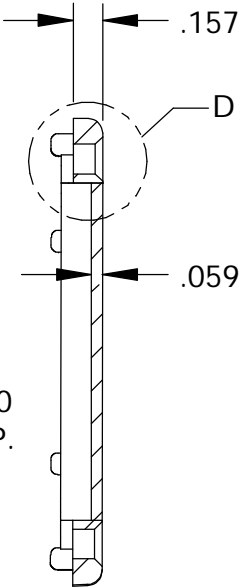
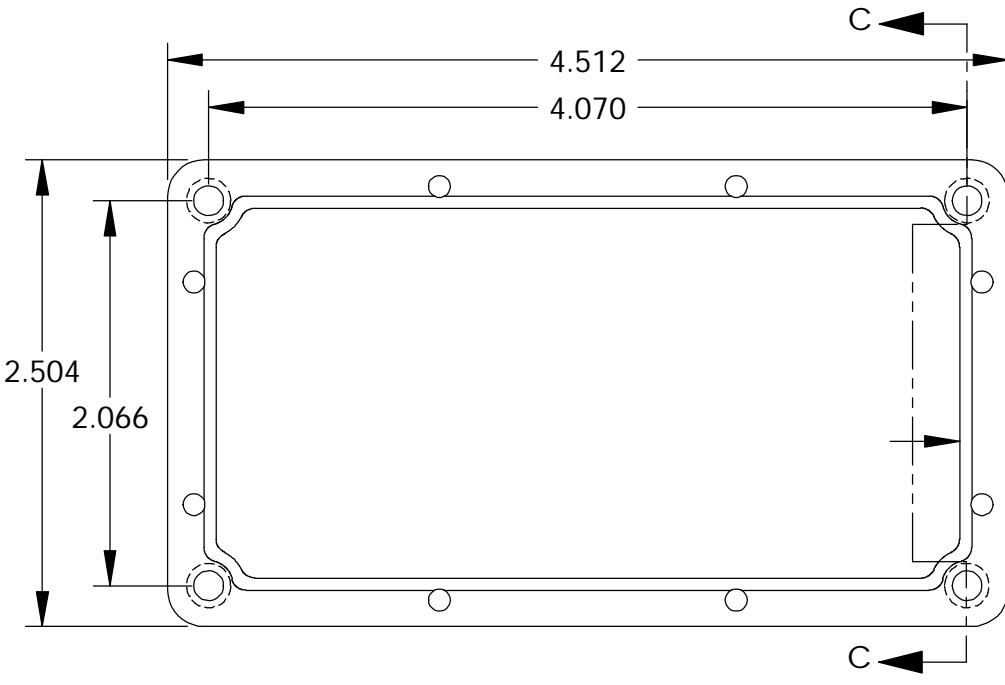
ALL HOLE DIAMETERS HAVE $\pm .005$ TOLERANCE.
ALL OTHER DIMENSIONS HAVE $\pm .015$ TOLERANCE.
ENCLOSURES ARE SHIPPED UNASSEMBLED WITH
ALL ITEMS SHOWN.



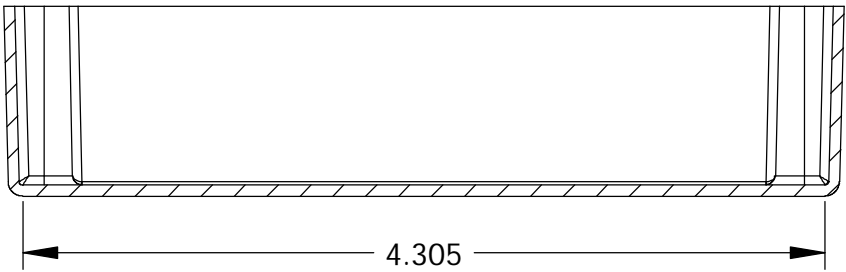
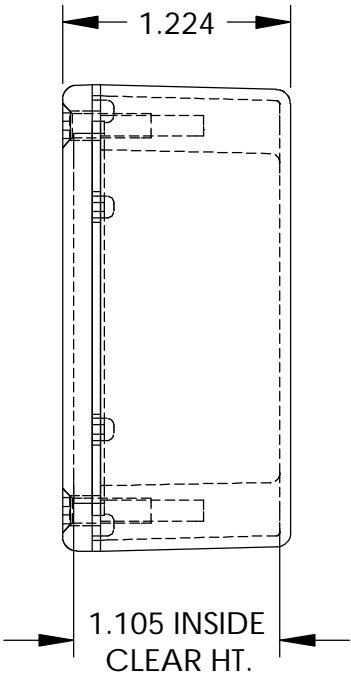
DETAIL D
SCALE 6 : 1



SECTION A-A



SECTION C-C



SECTION B-B

BODY

COVER

PARTS LIST									
+/- .005 BETWEEN HOLE CENTERS +/- .015 FROM SHEARED EDGE +/- .032 FROM A BENT SURFACE +/- .062 BETWEEN ASSEMBLED SURFACES UNLESS OTHERWISE SPECIFIED			CAD GENERATED DRAWING. DO NOT MANUALLY UPDATE			BUD INDUSTRIES INC.			
			APPROVALS		DATE	DIE CAST ALUMINUM ENCLOSURE			
			DRAWN	DAB	3-31-06				
			MATERIAL	AS NOTED	AS NOTED				
QTY.			USED ON			SIZE	DWG. NO.	REV.	
						C	CN-5703		
						SCALE	CAD FILE:	SHEET 1 OF 1	

Mouser Electronics

Authorized Distributor

Click to View Pricing, Inventory, Delivery & Lifecycle Information:

[Bud Industries:](#)

[CN-5703](#)