

PART NAME SLOPING PANEL PRESTIGE CABINET

PART No. C-1555 & C-1557

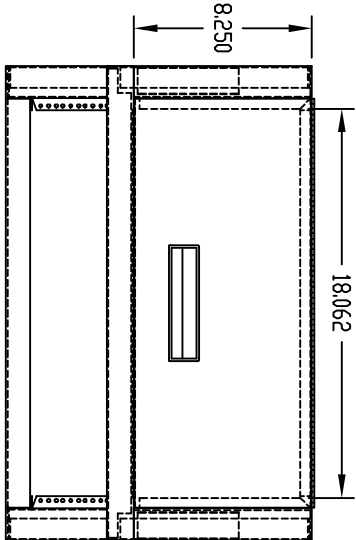
MATERIAL:

BOTTOM, SIDES, BACK, MOUNTING
RAILS & CROSS BARS _____ 16 GA. STEEL
TOP _____ 18 GA. STEEL
HANDLES _____ PLASTIC
FEET _____ PLASTIC

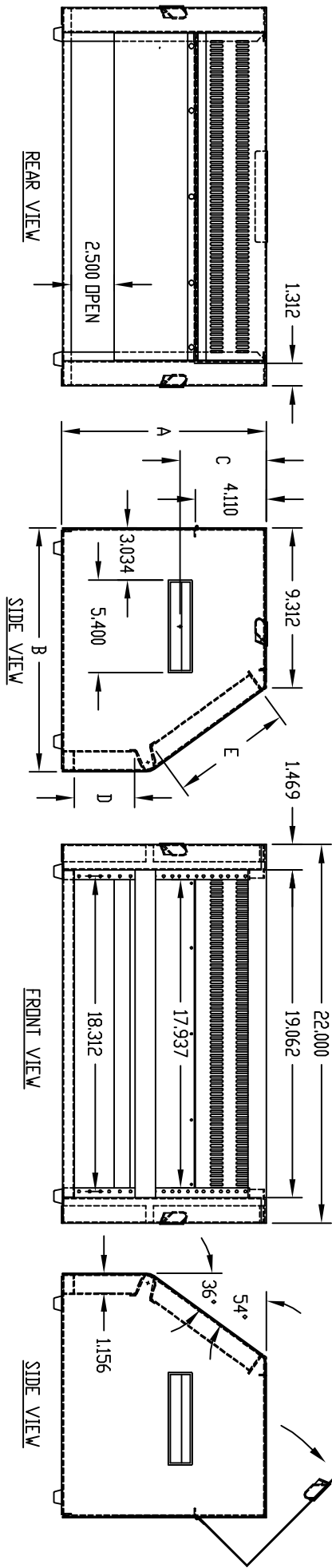
FINISH:

BODY ASSEMBLY, TOP & CROSS BAR _____ METALLIC GRAY
FEET & HANDLES _____ BLACK

MOUNTING RAILS ARE RECESSED 1,156 & TAPPED
#10-32 ON E.I.A. UNIVERSAL SPACING.



TOP VIEW



PART No.	A	B	C	PANEL SPACE		
				D	E	
C-1555	11,906	14,187	5,000	3,500	7,000	
C-1557	14,781	16,250	5,000	3,500	10,500	

BOTTOM VIEW

Mouser Electronics

Authorized Distributor

Click to View Pricing, Inventory, Delivery & Lifecycle Information:

[Bud Industries:](#)

[C-1557](#) [C-1555](#)