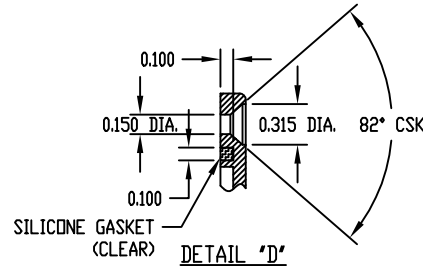
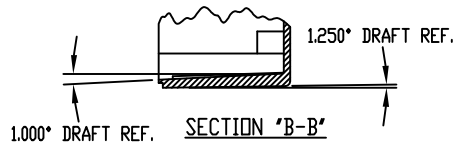


PART NAME	NEMA 4X DIE CAST ALUMINUM ENCLOSURE	PART No.	AN-1307, AN-1307-G, AN-2807 & AN-2807-B	REV. DATE	2-11-09
-----------	-------------------------------------	----------	---	-----------	---------

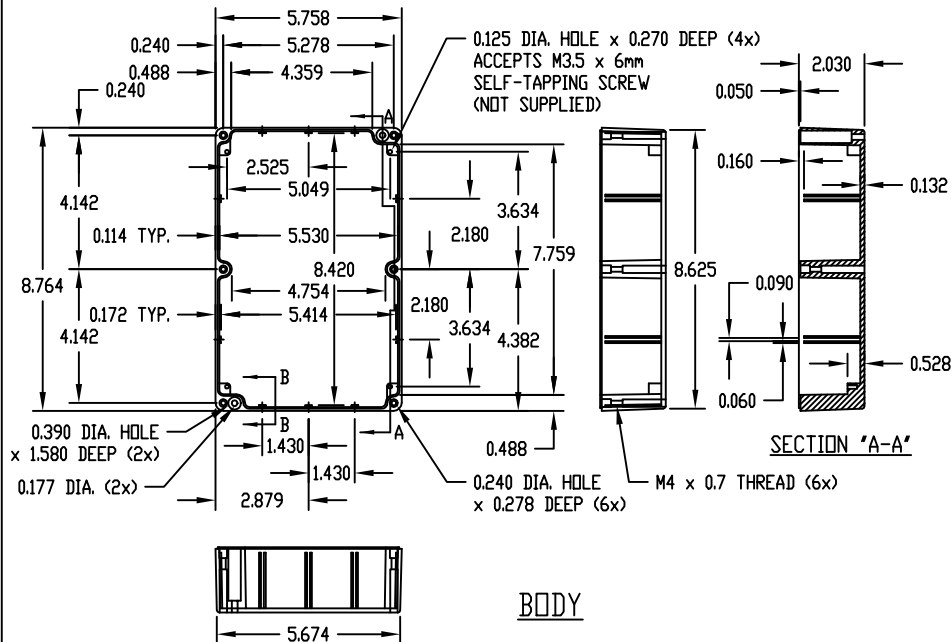


MATERIAL: ALUMINUM ALLOY #ADC-12

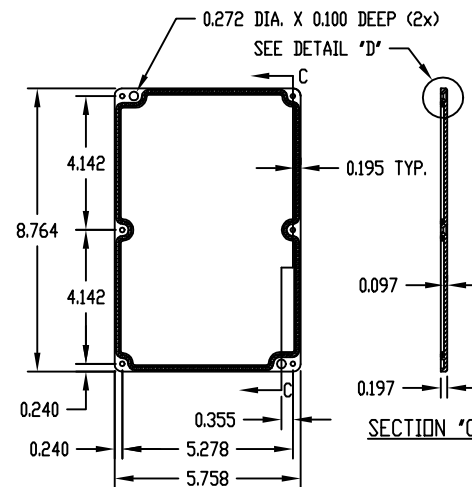
FINISH: NATURAL (NO SUFFIX)
GRAY (SUFFIX -G)
SMOOTH BLACK (SUFFIX -B)

NOTES:

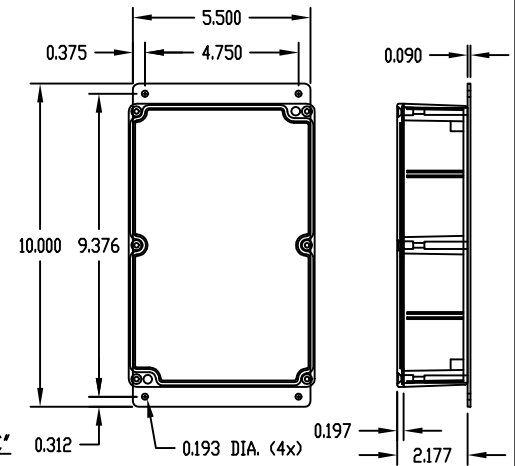
- 1) SIX (6) M4 x 20mm (0.787") LG. SCREWS SUPPLIED FOR ASSEMBLY OF COVER TO BODY.
- 2) ALL HOLE DIAMETERS HAVE ± 0.005 TOLERANCE
ALL OTHER DIMENSIONS HAVE ± 0.015 TOLERANCE



BODY



COVER



PART NO. AN-2807 & AN-2807-B
ARE SUPPLIED WITH A WELDED
ON MOUNTING BRACKET ONLY.

Mouser Electronics

Authorized Distributor

Click to View Pricing, Inventory, Delivery & Lifecycle Information:

[Bud Industries:](#)

[1307-C](#)