

PART  
NAME

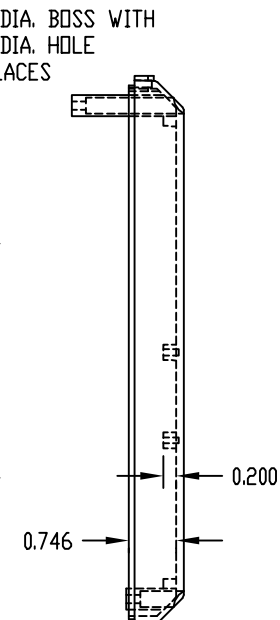
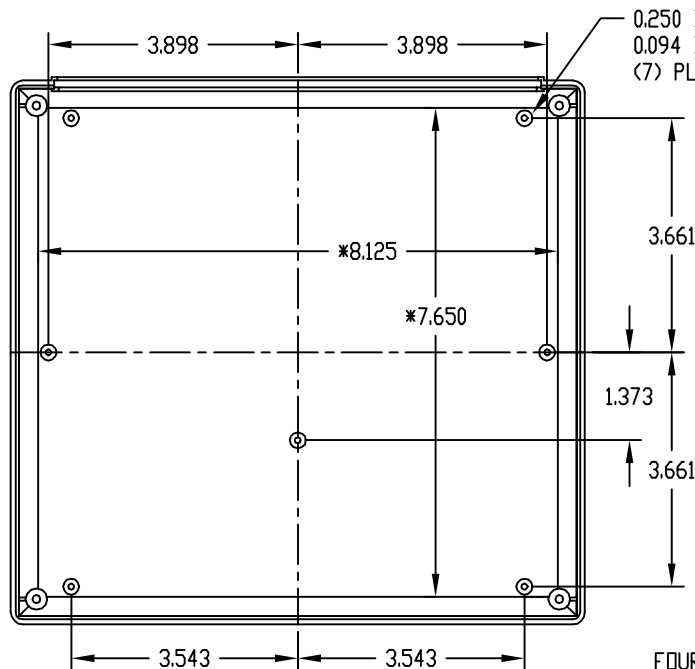
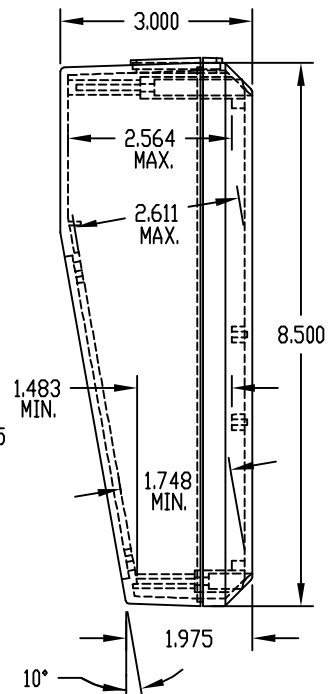
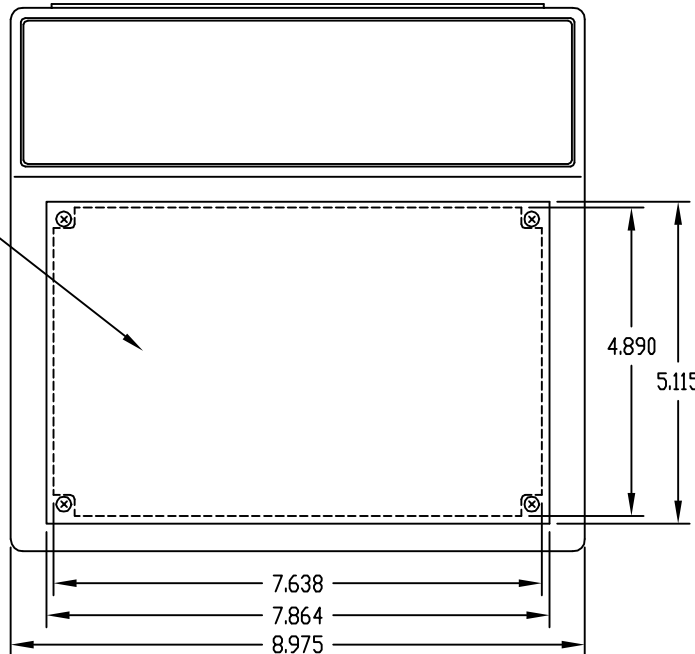
PLASTICASE

PART  
No.

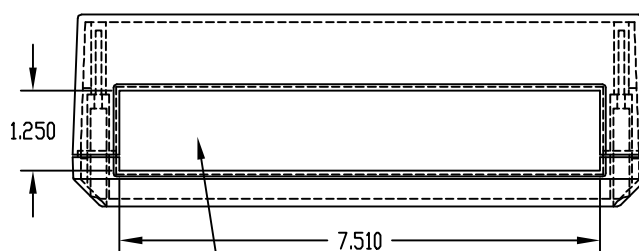
PC-11493

MATERIAL: BODY TOP & BOTTOM, REAR PANEL \_\_\_\_\_ ABS THERMOPLASTIC  
(UL94-HB RATED)  
SLOPE PANEL \_\_\_\_\_ 0.100 THK. ALUMINUM  
FINISH: BODY TOP & BOTTOM \_\_\_\_\_ LIGHT GRAY  
REAR PANEL \_\_\_\_\_ DARK GRAY  
SLOPE PANEL \_\_\_\_\_ NATURAL

REMOVABLE  
ALUMINUM  
PANEL  
(PRESSURE  
SENSITIVE  
TAPE ON  
ONE SIDE)



BODY BOTTOM  
(WITH BODY TOP REMOVED)



REAR VIEW

REMOVABLE REAR PANEL  
0.090 THICK (TEXTURED ON ONE SIDE)

FOUR (4) M3 x 0.630" LG. SCREWS  
SUPPLIED FOR ASSEMBLING BODY  
TOP TO BOTTOM

FOUR (4) M3 x 0.315" LG. CSK. SCREWS  
SUPPLIED FOR ASSEMBLING SLOPE  
PANEL TO BODY TOP

FOUR (4) RUBBER STICK-ON FEET SUPPLIED

MOUNTING BOSSES USE EITHER M2.5 METRIC  
OR #4 STD. SHEET METAL SCREWS x 0.188"  
LG. (NOT SUPPLIED)

NOTE: ALL DIMENSIONS HAVE ±0.015  
TOLERANCE UNLESS OTHERWISE SPECIFIED

\* THESE INSIDE DIMENSIONS ARE TAKEN  
FROM CLOSED END OF THE BOX

# Mouser Electronics

Authorized Distributor

Click to View Pricing, Inventory, Delivery & Lifecycle Information:

[Bud Industries:](#)

[PC-11493](#)