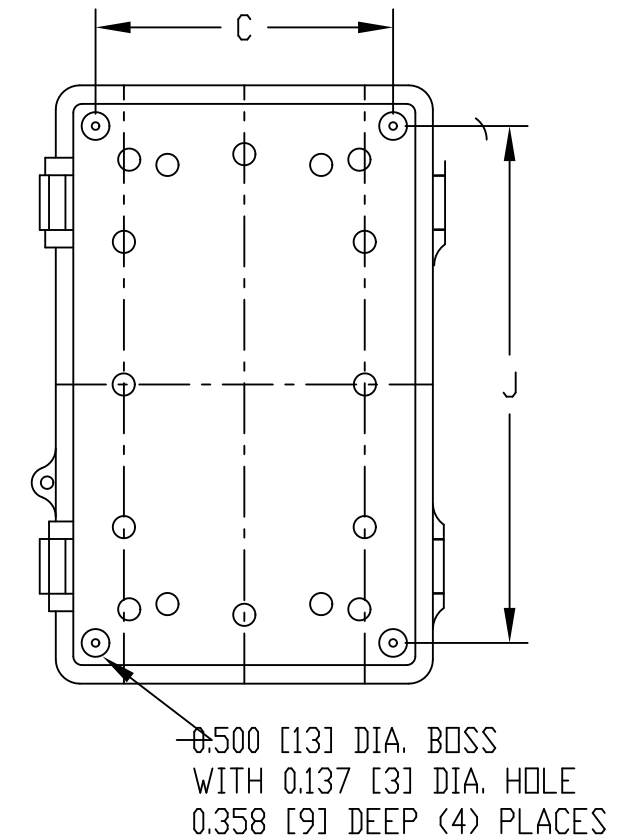
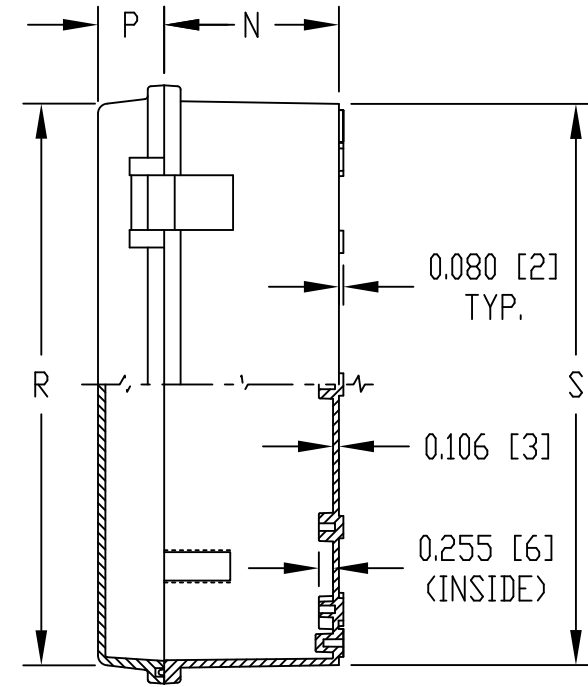
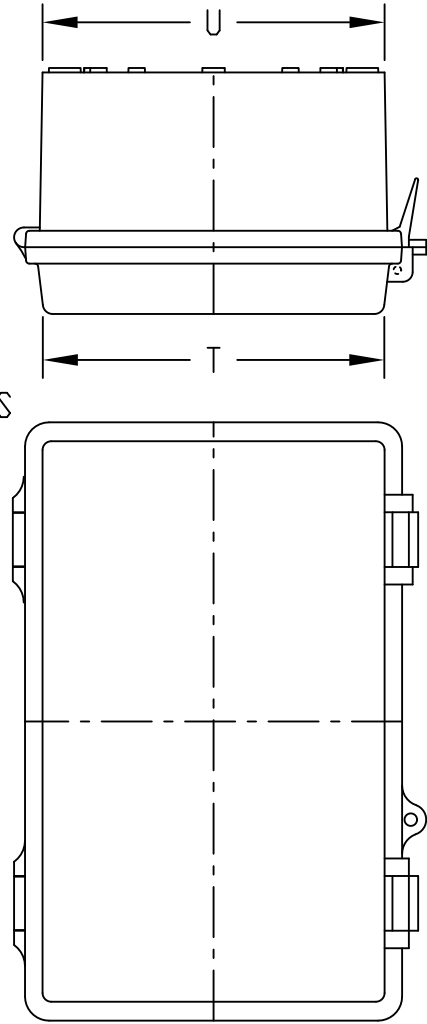
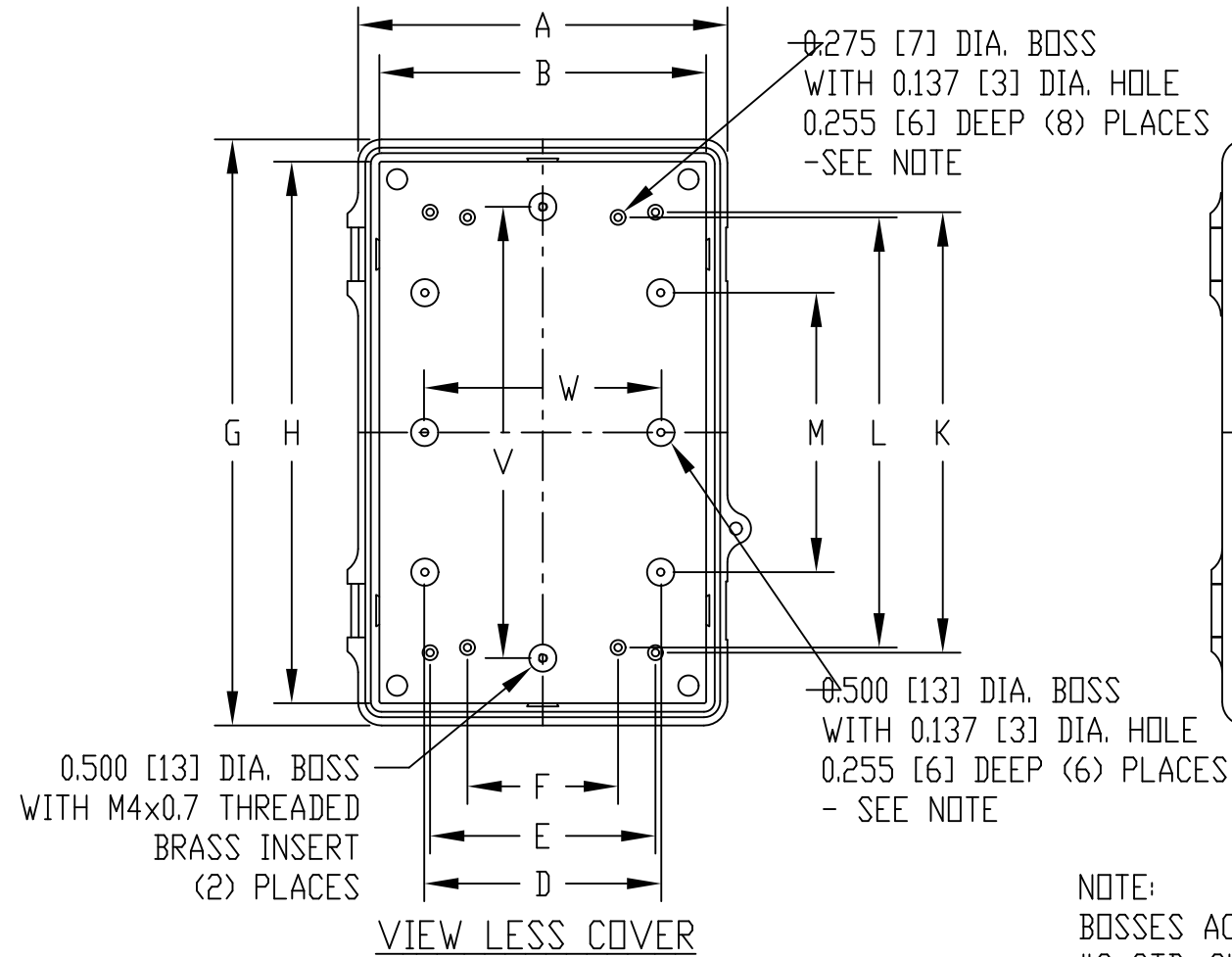


PART NAME	NON-METALLIC ENCLOSURE (STYLE B)	PART No.	NBB-10241 & NBB-10261 & NBB-22241	REV. DATE	10-28-14
-----------	----------------------------------	----------	-----------------------------------	-----------	----------

ALL ENCLOSURES MEET NEMA TYPE 1, 2, 4, 4X, 12 & 13 AND IEC529-IP65

SUPPLIED WITH (4) SMALL WALL MOUNTING BRKTS. (REF. NBX-10920) & (4) M5x0.8 x 12mm LG. TRUSS HD. SELF-TAPPING SCREWS (NOT SHOWN)

INTERNAL HINGED PANEL MOUNTING BRACKETS, STAINLESS STEEL LOCKING HASP, AIR AND MOISTURE VENTS AND GALVANIZED STEEL INTERNAL PANEL ARE NOT INCLUDED, BUT CAN BE PURCHASED SEPARATELY.



MATERIAL:  
UL508-4X INDOOR VERSION  
SOLID BODY & COVER \_\_\_\_\_ LIGHT GRAY ABS/PC BLENDED PLASTIC  
UL94-5VB FLAMMABILITY RATING  
CLEAR COVER \_\_\_\_\_ POLYCARBONATE PLASTIC  
UL94V-0 FLAMMABILITY RATING  
UV STABILIZED

ABS VERSION  
SOLID BODY & COVER \_\_\_\_\_ LIGHT GRAY ABS  
UL94-HB FLAMMABILITY RATING  
LATCHES & HINGES \_\_\_\_\_ NON-METALLIC  
WALL MOUNTING BRACKETS \_\_\_\_\_ STAINLESS STEEL  
COVER INCLUDES GRAY POLYURETHANE GASKET.

NOTE:  
BOSSES ACCEPT M4 METRIC OR #8 STD. SHEET METAL SCREWS x 0.250 [6] LG. (NOT SUPPLIED)

DIMENSIONS = INCHES  
[MILLIMETERS]

NOTE: ALL DIMENSIONS HAVE ±0.039 [±1] TOLERANCE UNLESS OTHERWISE SPECIFIED

UL508-4X INDOOR VERSION		ABS VERSION	DIMENSIONS																			
PART NO.		PART NO.																				
SOLID COVER	CLEAR COVER	SOLID COVER	A	B	C	D	E	F	G	H	J	K	L	M	N	P	R	S	T	U	V	W
NBB-10241	NBB-10261	NBB-22241	6.780 [172]	6.000 [152]	5.350 [136]	4.352 [111]	4.138 [105]	2.765 [70]	10.750 [273]	9.940 [252]	9.294 [236]	8.085 [205]	7.896 [201]	5.129 [130]	3.142 [80]	1.190 [30]	10.100 [257]	10.090 [256]	6.140 [156]	6.150 [156]	8.283 [210]	4.330 [110]

# Mouser Electronics

Authorized Distributor

Click to View Pricing, Inventory, Delivery & Lifecycle Information:

Bud Industries:

[NBB-10241](#) [NBB-10261](#) [NBB-22241](#)