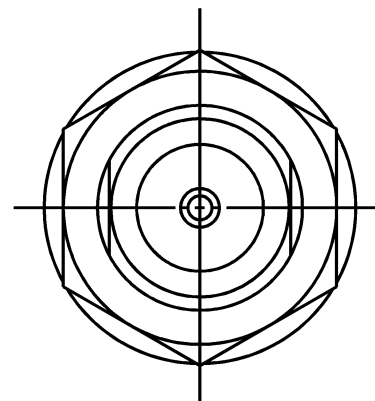
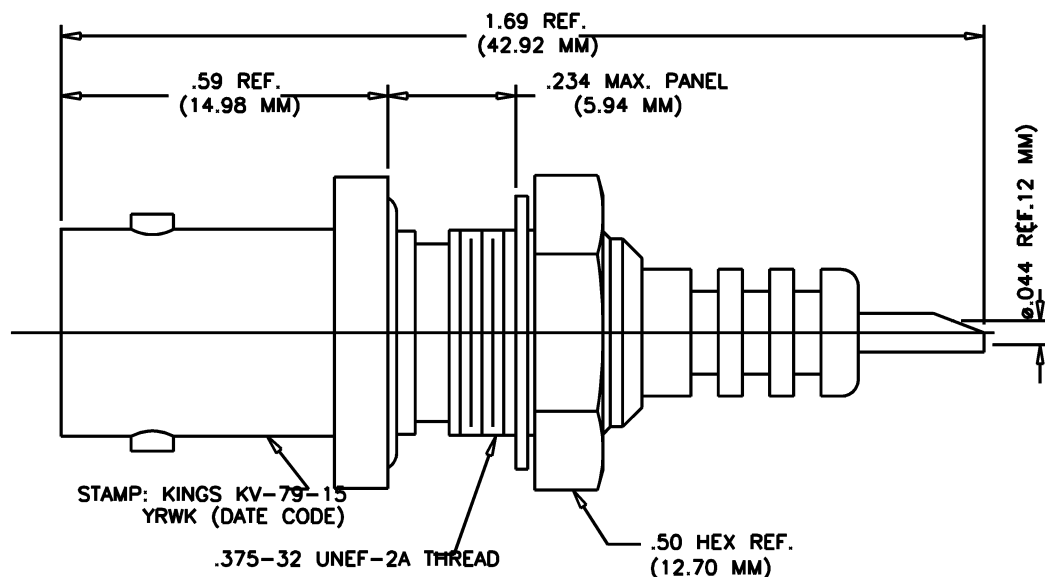


DASH NO.	M CODE	MADE FROM
----------	--------	-----------

GSD

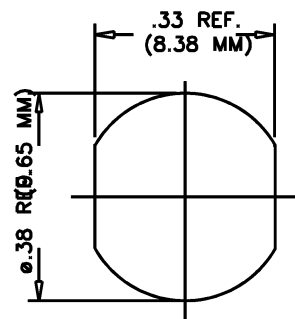
KV-79-15

REVISIONS	
ISSUE	CHANGES
6	CN 37589 C REDRAWN JW 03/03/98
7	CN 37691 E HVN 10/05/98
8	CN 39747 C PMC 1/5/07
9	CN 39954 C HVN 06/05/07



NOTES:

- MATERIALS:**
CENTER CONTACT F: BERYLLIUM COPPER, ASTM-B-196.
LOCKWASHER: PHOSPHOR BRONZE, QQ-B-750.
INSULATORS: TEFLON, ASTM-D-1457.
O-RING: SYNTHETIC RUBBER PER MIL-P-5516.
ALL OTHER METAL PARTS: BRASS, ASTM-B16.
- FINISHES:**
CENTER CONTACT: SILVER PLATE PER QQ-P-365.
ALL OTHER METAL PARTS: KINGS TARNISH RESISTANT FINISH (TR-5).
- ELECTRICAL CHARACTERISTICS:**
OPERATING VOLTAGE: 3500 V AC.
5000 V DC.



MOUNTING HOLE

GSD

KV-79-15 SD

SCALE	4:1
APPROX SURFACE AREA	
USED ON	
REF:	
MHV BULKHEAD RECEPTACLE	
DRAWN	SD
DATE	09/08/86
DESIGN	MJB
DATE	09/08/86
APPR.	
DATE	

A Winchester Electronics Company

KV-79-15

Mouser Electronics

Authorized Distributor

Click to View Pricing, Inventory, Delivery & Lifecycle Information:

[Winchester Interconnect:](#)

[KV-79-15](#)