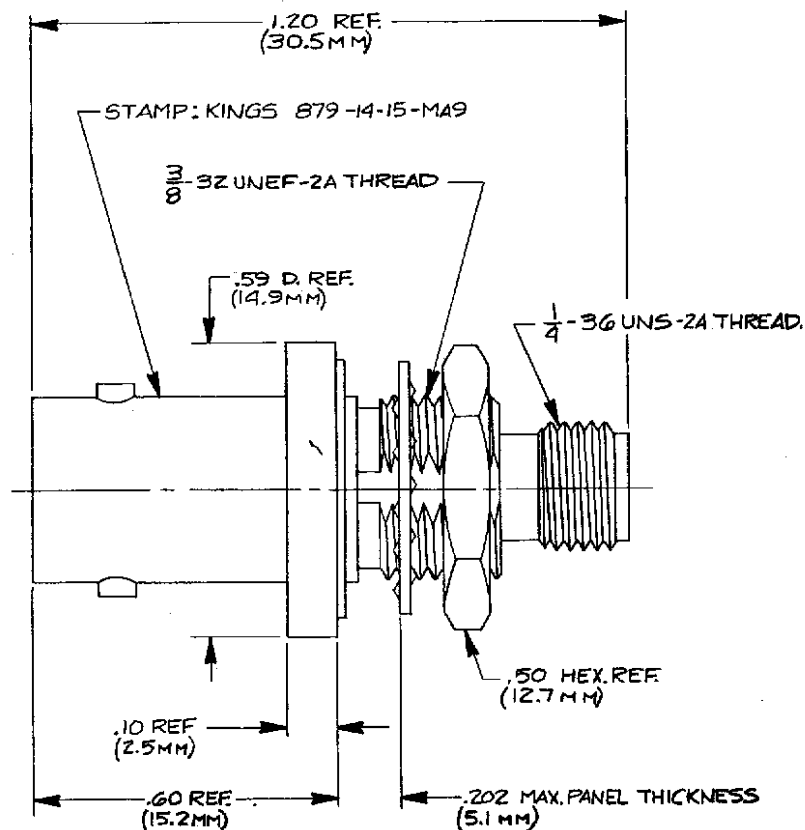


DASH NO.	M CODE	MADE FROM
----------	--------	-----------



#### NOTES:

##### 1. MATERIALS:

CONTACT } BERYLLIUM COPPER, QQ-C-530.  
SMA BODY }

LOCKWASHER- PHOSPHOR BRONZE, QQ-B-750.

GASKET- SILKONE RUBBER, ZZ-R-765.

INSULATOR-TEFLON, L-P-403.

ALL OTHER METAL PARTS-BRASS, QQ-B-626.

##### UNLESS OTHERWISE SPECIFIED:

1. TOLERANCES: FRACTIONS & 2 PLACE DECIMALS  $\pm .010$   
3 PLACE DECIMALS  $\pm .004$  ANGLES  $\pm 0^{\circ}30'$
2. T. I. R. CONCENTRICITY OF ANY 2 DIAMETERS MAY NOT EXCEED HALF THE SUM OF THEIR TOLERANCES.

3. REMOVE ALL BURRS, BREAK SHARP EDGES .005 MAX.
4. NO FILLETS PERMITTED.
5. SURFACE ROUGHNESS 63 MICROINCHES RMS MAX.
6. ALL DIMENSIONS PRIOR TO PLATING.
7. ALL PLATING IN ACCORDANCE WITH KER 10004.

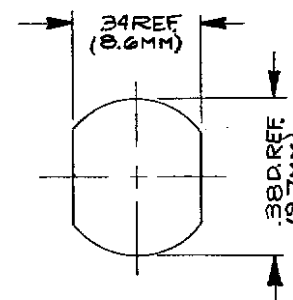
#### NOTES: (CONT)

##### 2. FINISHES:

ALL METAL PARTS- HARD GOLD PLATE  
PER MIL-G-45204.

##### 3. ELECTRICAL CHARACTERISTICS:

WORKING VOLTAGE- 500 VOLTS RMS.  
NOMINAL IMPEDANCE-  $50\Omega$ .  
FREQUENCY RANGE- DC TO 40GHz.



MOUNTING HOLE

879-14-15-MA9

GSD

#### REVISIONS

ISSUE	CHANGES
1	CN 27180 C GA 23 MAY 85

SCALE 4:1

APPROX SURFACE AREA

USED ON

REF

BULKHEAD ADAPTER  
SMA TO ENC

DRAWN	AMD	DATE	24 MAR 88
APPR	MJB	DATE	25 MAR 88
APPR		DATE	

**KINGS**  
ELECTRONICS CO., INC.  
LUDLOW, MA 01030

GSD

879-14-15-MA9

# Mouser Electronics

Authorized Distributor

Click to View Pricing, Inventory, Delivery & Lifecycle Information:

[Winchester Interconnect:](#)

[879-14-15 MA9](#)