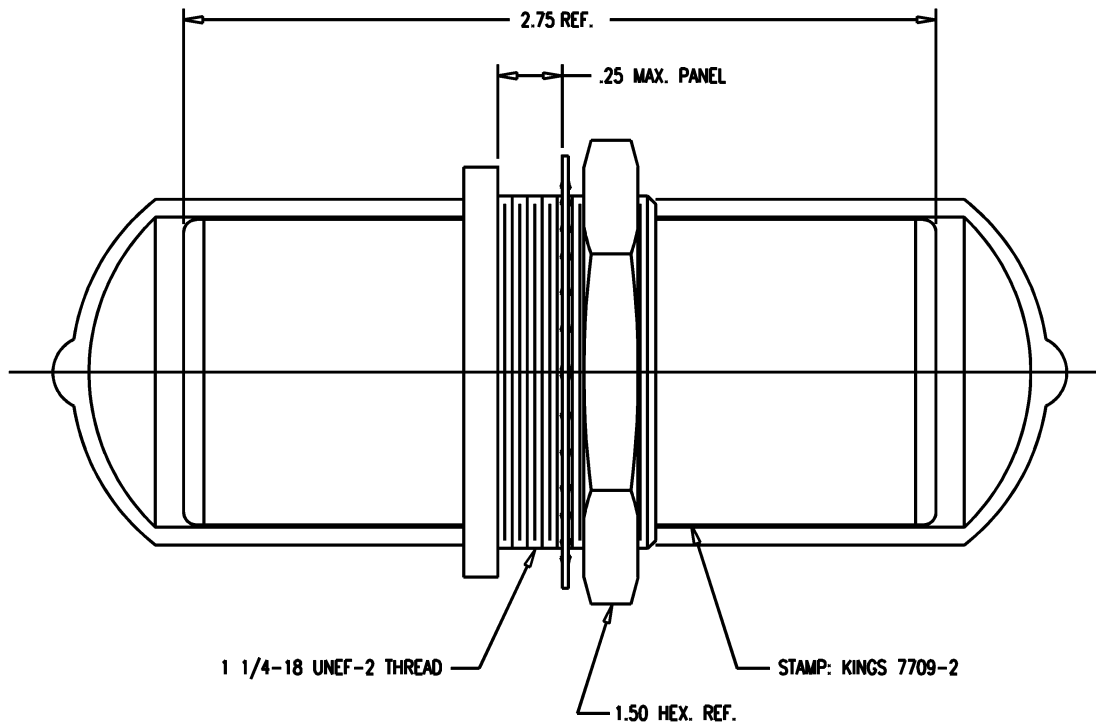


SD

7709-2



NOTES:

1. MATERIALS:

INSULATORS: TEFLON, ASTM-D-4894

CAP: VINYL

OUTER CONTACT SPRING

CENTER CONTACT

INSERT

LOCKWASHER: PHOS. BRONZE, ASTM-B-103

ALL OTHER METAL PARTS: BRASS, ASTM-B16

2. FINISHES:

OUTER CONTACT SPRING

CENTER CONTACT

ALL OTHER METAL PARTS: KINGS TARNISH RESISTANT NICKEL FINISH (TR-5)

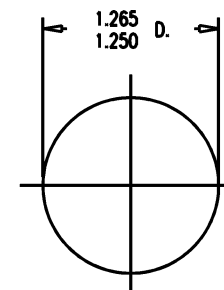
3. ELECTRICAL CHARACTERISTICS:

NOMINAL IMPEDANCE: 75 OHMS

FREQUENCY RANGE: DC-500 MHz

VOLTAGE BREAKDOWN: CENTER CONDUCTOR/INNER GROUND: 1500 VOLTS RMS

INNER GROUND/OUTER GROUND: 500 VOLTS RMS



MOUNTING HOLE

SD

REVISIONS

ISSUE	CHANGES
0	ER 36669 ME 10/31/95
1	CN 36754 A ME 12/22/95
2	CN 37374 D PG 03/12/97

QGS1003

SCALE 2:1

APPROX SURFACE AREA

USED ON

REF: KP-8040-007-000

ADPT, F-F, BKHD, TRI-LOC
SERIAL DIGITAL

DRAWN	ME	DATE	10/31/95
DESIGN	FD	DATE	10/31/95
APPR.		DATE	

KINGS
ELECTRONICS CO., INC.
TUCKAHOE, NEW YORK 10707

7709-2

Mouser Electronics

Authorized Distributor

Click to View Pricing, Inventory, Delivery & Lifecycle Information:

[Winchester Interconnect:](#)

[7709-2](#)