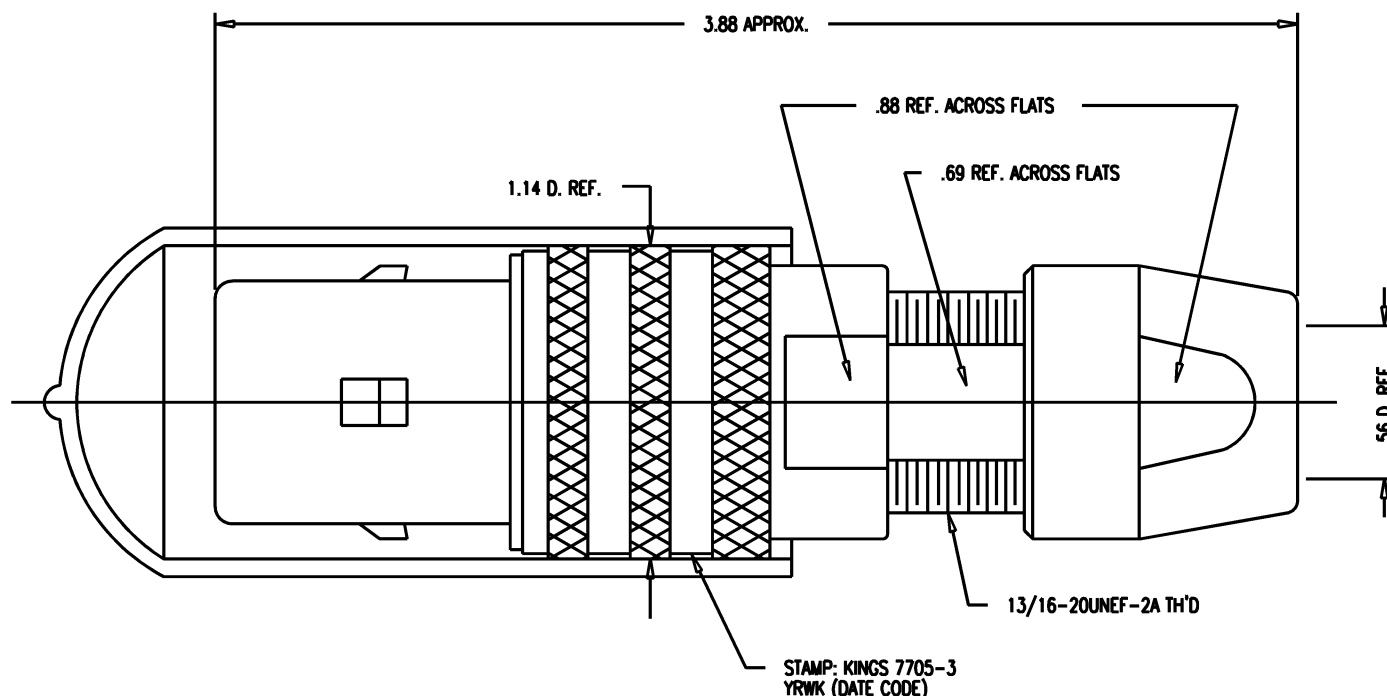


DASH NO.	M CODE	MADE FROM
----------	--------	-----------

# GSD

7705-3

REVISIONS	
ISSUE	CHANGES
0	ER 35417 KH 05/06/95
1	CN 38123 C BDH 11/08/00



#### NOTES:

1. FOR USE WITH 740 CABLE GROUP.
2. FOR CABLING INSTRUCTIONS SEE KAI-8010.
3. FOR CABLE TRIMMING USE KTJ-300 AND KTD-304
4. FOR CRIMPING USE DIE KTH-1000 AND KTH-2041.
5. MATERIALS:  
INSULATORS: TEFLON, ASTM-D-4894  
CONDUCTIVE GASKET: CONSIL C 87-10004  
GASKETS: SILICONE RUBBER, ZZ-R-765  
K-GRIP SLEEVE: COM. BRONZE, ASTM-B-135  
OUTER CONTACT: PHOSPHOR BRONZE, QQ-B-750  
FINGER BODY: BER. COPPER, ASTM-B-196  
CENTER CONTACT TIP: DELRIN  
CAP: VINYL  
ALL OTHER METAL PARTS: BRASS, ASTM-B16

#### 6. FINISHES:

- CENTER CONTACT: HARD GOLD PLATE, PER MIL-G-45204
  - NUT
  - COLLET
  - OUTER BODIES
  - ALL OTHER METAL PARTS: SILVER PLATE, PER QQ-S-365
- KINGS TARNISH RESISTANT NICKEL FINISH (TR-5)

#### 7. ELECTRICAL CHARACTERISTICS:

- NOMINAL IMPEDANCE: 75 OHMS
- FREQUENCY RANGE: DC-500 MHZ
- VOLTAGE BREAKDOWN: CENTER CONDUCTOR/INNER GROUND: 1500 VRMS
- INNER GROUND/OUTER GROUND: 500 VRMS

KAM5508

SCALE 2:1

APPROX SURFACE AREA

USED ON

REF: KP-8010-740-400

PLUG, TRI-LOC  
(SERIAL DIGITAL)

DRAWN	KH	04/06/95
DESIGN	DW	04/07/95
APPR.		DATE

**KINGS**  
ELECTRONICS CO., INC.  
ROCK HILL, SOUTH CAROLINA 29730

7705-3

# GSD

# Mouser Electronics

Authorized Distributor

Click to View Pricing, Inventory, Delivery & Lifecycle Information:

[Winchester Interconnect:](#)

[7705-3](#)