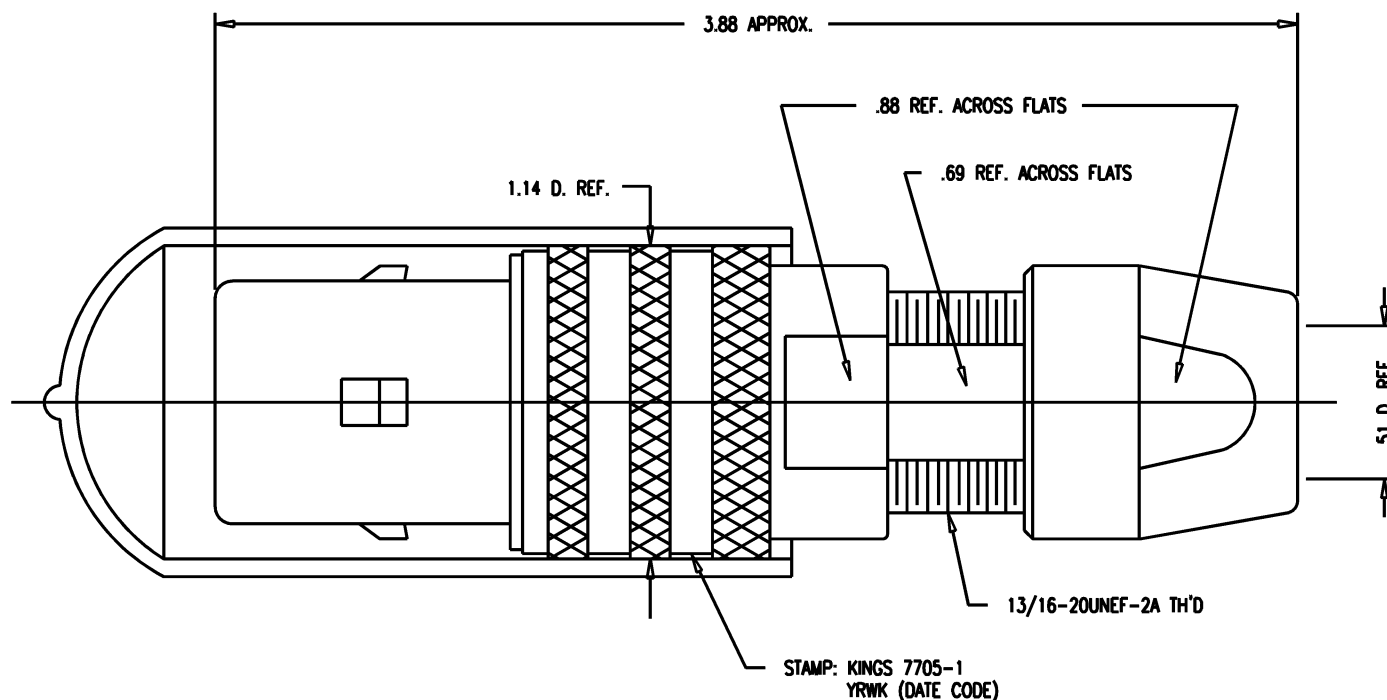


DASH NO.	M CODE	MADE FROM
----------	--------	-----------

GSD



NOTES:

1. FOR USE WITH 700 CABLE GROUP.
2. FOR CABLING INSTRUCTIONS SEE KAI-8010.
3. FOR CABLE TRIMMING USE KTJ-300 AND KTD-300
4. FOR CRIMPING USE DIE KTH-1000 AND KTH-2040.
5. MATERIALS:
INSULATORS: TEFLON, ASTM-D-1457
CONDUCTIVE GASKET: CONSIL C 87-10004
GASKETS: SILICONE RUBBER, ZZ-R-765
K-GRIP SLEEVE: COM. BRONZE TUBE, ALLOY 220
OUTER CONTACT: PHOSPHOR BRONZE, QQ-B-750
FINGER BODY: BER. COPPER, ASTM-B-196
CENTER CONTACT TIP: DELRIN
CAP: VINYL
ALL OTHER METAL PARTS: BRASS, ASTM-B16

6. FINISHES:
CENTER CONTACT: HARD GOLD PLATE, PER MIL-G-45204
NUT
COLLET
OUTER BODIES
ALL OTHER METAL PARTS: SILVER PLATE, PER QQ-S-365
7. ELECTRICAL CHARACTERISTICS:
NOMINAL IMPEDANCE: 75 OHMS
FREQUENCY RANGE: DC-500 MHZ
VOLTAGE BREAKDOWN: CENTER CONDUCTOR/INNER GROUND: 1500 VRMS
INNER GROUND/OUTER GROUND: 500 VRMS

7705-1

REVISIONS

ISSUE	CHANGES
0	ER 35412 KH 05/06/95
1	CN 36381 E ME 06/19/95
2	CN 37920 E TML 10/25/99
3	CN 38122 C BDH 11/08/00

77051S

SCALE 2:1

APPROX SURFACE AREA

USED ON

REF: KP-8010-700-400

PLUG, TRI-LOC
(SERIAL DIGITAL)

DRAWN KH	DATE 04/06/95
DESIGN DW	DATE 04/07/95
APPR.	DATE

KINGS
ELECTRONICS CO., INC.
ROCK HILL, SOUTH CAROLINA 29730

7705-1

GSD

Mouser Electronics

Authorized Distributor

Click to View Pricing, Inventory, Delivery & Lifecycle Information:

[Winchester Interconnect:](#)

[7705-1](#)