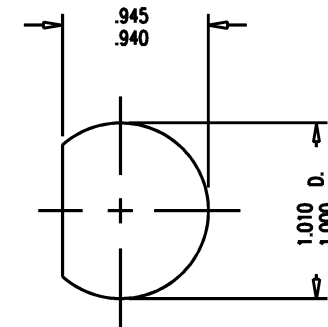
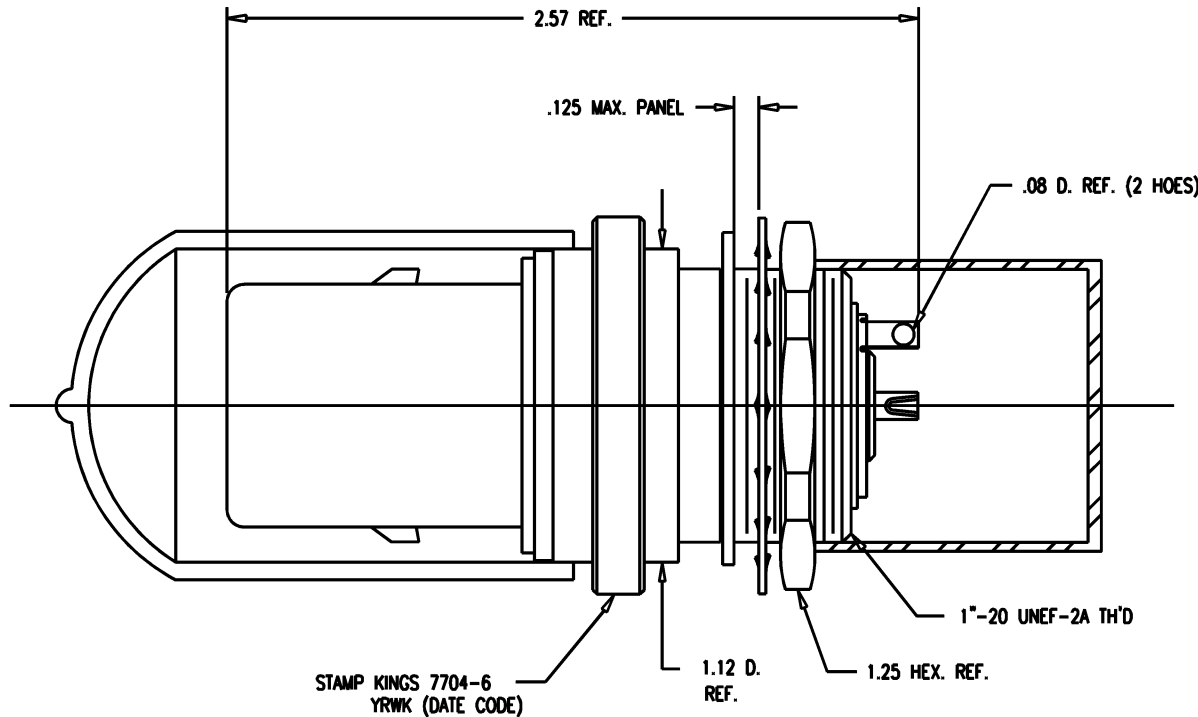


# GSD



MOUNTING HOLE

# GSD

REVISIONS	
ISSUE	CHANGES
0	ER 35436 KH 04/25/95
1	CN 36514 E ME 08/09/95
2	CN 37196 E KH 11/12/96
3	CN 37209 A KH 06/10/97
4	CN 37762 C HVN 01/19/99
5	CN 37779 D HVN 02/23/99
6	CN 38176 C TML 01/10/01
<p>WAS: KAM5611 7704-6S</p> <p>SCALE 2:1</p> <p>APPROX SURFACE AREA</p> <p>USED ON</p> <p>REF: KP-8050-002-000</p> <p>RCPT, BKHD, TRI-LOC, SERIAL DIGITAL</p> <p>DRAWN KH DATE 04/25/95</p> <p>DESIGN DW DATE 04/26/95</p> <p>APPR. DATE</p> <p><b>KINGS</b> ELECTRONICS CO., INC. ROCK HILL, SOUTH CAROLINA 29730</p> <p>7704-6</p>	

- NOTES:
- MATERIALS:
    - CAPS: VINYL
    - INSULATORS: TEFLON, ASTM-D-4894
    - GASKETS: SILICONE RUBBER, ZZ-R-765
    - CONDUCTIVE GASKET: CONSIL C 87-10004, 60-70 DUROMETER
    - LOCKWASHER
    - RETAINING RING } SPRING STEEL, PER ASTM A682
    - E-RING
    - OUTER CONTACT: PHOSPHOR BRONZE, ASTM-B-103
    - BODY: BER. COPPER, ASTM-B-196
    - ALL OTHER METAL PARTS: BRASS, ASTM-B16
  - FINISHES:
    - CENTER CONTACTS: GOLD PLATE PER MIL-G-45204
    - ALL OTHER METAL PARTS: KINGS TARNISH RESISTANT NICKEL FINISH (TR-5)
  - ELECTRICAL CHARACTERISTICS:
    - FREQUENCY RANGE: DC-500 MHZ
    - NOMINAL IMPEDANCE: 75 ~W
    - VOLTAGE BREAKDOWN: CENTER CONDUCTOR/INNER GROUND: 1500 VOLTS RMS
    - INNER GROUND/OUTER GROUND: 500 VOLTS RMS

# Mouser Electronics

Authorized Distributor

Click to View Pricing, Inventory, Delivery & Lifecycle Information:

[Winchester Interconnect:](#)

[7704-6](#)