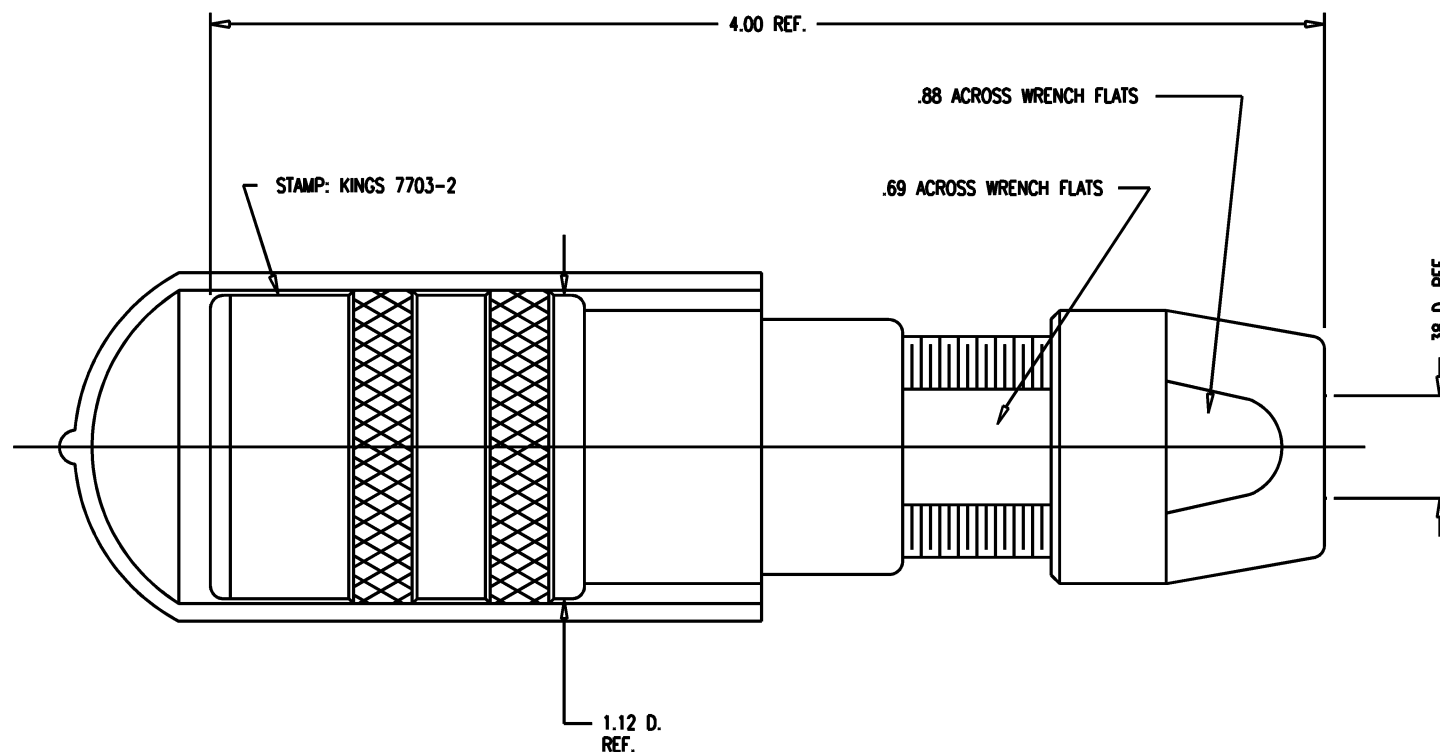


DASH NO.	M CODE	MADE FROM
----------	--------	-----------

GSD

7703-2

REVISIONS		
ISSUE	CHANGES	
0	ER 35423 KH 04/10/95	
1	CN 36678 A KH 11/07/95	
2	CN 37238 D KH 02/03/97	
3	CN 39531 C AM 07/12/06	
4	CN 39551 E AM 07/31/06	



NOTES:

- FOR USE WITH 730 CABLE GROUP.
- FOR CABLING INSTRUCTIONS SEE KAI-8010.
- FOR CRIMPING USE DIE SIZE KTH-2002.
- MATERIALS:
INSULATORS: TEFLON, ASTM-D-4894
GASKETS: SILICONE RUBBER, ZZ-R-765
CAP: VINYL
K-GRIP SLEEVE: COM'L BRONZE, ASTM-B-135
CENTER CONTACT
OUTER CONTACT SPRING } BER. COPPER, ASTM-B-196
INSERT
ALL OTHER METAL PARTS: BRASS, ASTM-B16

- FINISHES:
CENTER CONTACT
OUTER CONTACT SPRING } GOLD PLATE PER MIL-G-45204
NUTS
COLLET } KINGS TARNISH RESISTANT NICKEL FINISH (TR-5)
BODIES
ALL OTHER METAL PARTS: SILVER PLATE PER QQ-S-365
- ELECTRICAL CHARACTERISTICS:
NOMINAL IMPEDANCE: 75 ~W
FREQUENCY RANGE: DC-500 MHZ
VOLTAGE BREAKDOWN: CENTER CONDUCTOR/INNER GROUND: 1500 VRMS
INNER GROUND/OUTER GROUND: 500 VRMS

SCALE 2:1		
APPROX SURFACE AREA		
USED ON		
REF: KP-8020-730-400		
JK, TRI-LOC, SERIAL DIGITAL		
DRAWN KH	DATE	04/10/95
DESIGN DW	DATE	04/11/95
APPR.	DATE	
 ROCK HILL, SOUTH CAROLINA 29730		
7703-2		

GSD

Mouser Electronics

Authorized Distributor

Click to View Pricing, Inventory, Delivery & Lifecycle Information:

[Winchester Interconnect:](#)

[7703-2](#)