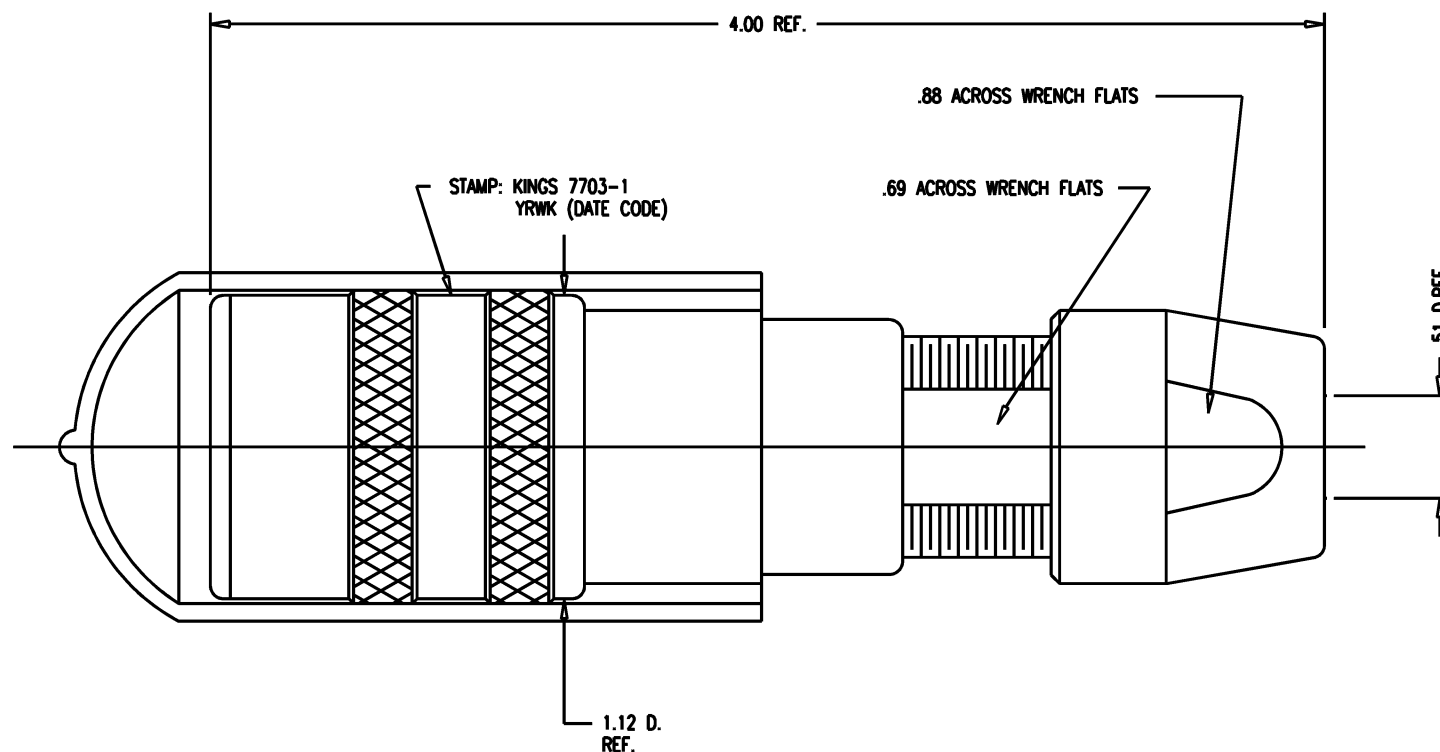


DASH NO.	M CODE	MADE FROM
----------	--------	-----------

# GSD

7703-1



#### NOTES:

1. FOR USE WITH 700 CABLE GROUP.
2. FOR CABLING INSTRUCTIONS SEE KAI-8010.
3. FOR CABLE TRIMMING USE KTJ-300 AND KTD-300.
4. FOR CRIMPING USE DIE SIZE 2040.

5. MATERIALS:  
INSULATORS-TEFLON, ASTM-D-4894  
GASKETS-SILICONE RUBBER, ZZ-R-765  
CAP-VINYL  
K-GRIP SLEEVE-COMMERCIAL BRONZE, ASTM-B-135  
CENTER CONTACT  
OUTER CONTACT SPRING } BER. COP., ASTM-B-196  
INSERT  
ALL OTHER METAL PARTS-BRASS, ASTM-B16

6. FINISHES:  
CENTER CONTACT } GOLD PLATE PER MIL-G-45204  
OUTER CONTACT SPRING }  
NUTS }  
COLLET } KINGS TARNISH RESISTANT NICKEL FINISH (TR-5)  
BODIES }  
ALL OTHER METAL PARTS-SILVER PLATE PER QQ-S-365
7. ELECTRICAL CHARACTERISTICS:  
NOMINAL IMPEDANCE: 75 OHMS  
FREQUENCY RANGE: DC-500 MHZ  
VOLTAGE BREAKDOWN: CENTER CONDUCTOR/INNER GROUND: 1500 VRMS  
INNER GROUND/OUTER GROUND: 500 VRMS

#### REVISIONS

ISSUE	CHANGES
0	ER 35421 KH 04/10/95
1	CN 37238 A KH 02/03/97
2	CN 38583 C BDH 05/24/02

KAM5516

SCALE 2:1

APPROX SURFACE AREA

USED ON

REF: KP-8020-700-400

JK, TRI-LOC,  
SERIAL DIGITAL

DRAWN	KH	DATE	04/10/95
DESIGN	DW	DATE	04/11/95
APPR.		DATE	

**KINGS**  
ELECTRONICS CO., INC.  
ROCK HILL, SOUTH CAROLINA 29730

7703-1

# GSD

# Mouser Electronics

Authorized Distributor

Click to View Pricing, Inventory, Delivery & Lifecycle Information:

[Winchester Interconnect:](#)

[7703-1](#)